

PHASE TWO — HATTERAS



Builder: HATTERAS

Year Built: 1973

Model: Motor Yacht

Price: PRICE ON APPLICATION

Location: United States

LOA: 38' 0" (11.58m)

Beam: 13' 7" (4.14m)

Min Draft: 3' 6" (1.07m)

Max Draft: 3' 6" (1.07m)

Cruise Speed: 8 Kts. (9 MPH)

Max Speed: 20 Kts. (23 MPH)

Our experienced yacht broker, Andrey Shestakov, will help you choose and buy a yacht that best suits your needs **Phase Two — HATTERAS** from our catalogue. Presently, at Shestakov Yacht Sales Inc., we have a wide variety of yachts available on our sale's list. We also work in close contact with all the big yacht manufacturers from all over the world.

If you would like to buy a yacht **Phase Two — HATTERAS** or would like help answering any questions concerning purchasing, selling or chartering a yacht, please call **+1(954)274-4435**

TABLE OF CONTENTS

TABLE OF CONTENTS	2
SPECIFICATIONS	4
Overview	4
Basic Information	4
Dimensions	4
Speed, Capacities and Weight	4
Accommodations	5
Hull and Deck Information	5
Engine Information	5
DETAILED INFORMATION	6
Walkthrough	6
Accommodations	6
Salon	6
Galley	6
Dining	6
Master Stateroom	6
Guest Stateroom	7
Fly Bridge	7
Sundeck	7
Audio & Visual Equipment	7
Electronics	7
Electrical Equipment	7
Deck Equipment	7
Safety & Fire Protection	8
Exclusions	8
Exclusions	8
Disclaimer	8
PHOTOS	9

CONTACTS	17
Contact details	17
Telephones	17
Office hours	17
Address	17

SPECIFICATIONS

Overview

Phase Two is a 1973 38' Hatteras Double Cabin flybridge Motoryacht. She offers a full Eisenglass enclosure on the flybridge and sundeck, twin naturally-aspirated 280 hp Detroit Diesel main engines by Johnson & Towers, dripless shaft seals, spare propellers, 8 kW generator, Magnum inverter, Vacuflush heads and a 2 stateroom 2 head layout. Great Loop capable.

Basic Information

Category: Motor Yacht

Sub Category: Aft Cabin

Model Year: 1973

Year Built: 1973

Country: United States

Fly Bridge: Yes

Dimensions

LOA: 38' 0" (11.58m)

Beam: 13' 7" (4.14m)

Min Draft: 3' 6" (1.07m)

Max Draft: 3' 6" (1.07m)

Clearance: 12' 0" (3.66m)

Speed, Capacities and Weight

Cruise Speed: 8 Kts. (9 MPH)

Max Speed: 20 Kts. (23 MPH)

Water Capacity: 148 Gallons

Holding Tank: 25 Gallons

Fuel Capacity: 300 Gallons

Accommodations

Total Cabins: 2

Total Berths: 4

Sleeps: 6

Total Heads: 2

Hull and Deck Information

Hull Material: Fiberglass

Hull Configuration: Modified V-Hull

Hull Color: White

Engine Information

Manufacturer: Detroit Diesel

Engine Type: Inboard

Fuel Type: Diesel

DETAILED INFORMATION

Walkthrough

From the fully Eisenglass enclosed sundeck, you can walk out either side deck or step up into the fully Eisenglass enclosed flybridge or step down into the salon. Once inside the salon, you will find the master stateroom entry port aft, storage cabinetry to port, lounge chair port forward, lounge chair and counter starboard forward, sleeper sofa and folding hi/lo table starboard aft. Walk forward and step down to find the galley to starboard, guest head to port and guest stateroom forward. Engine room access is via salon sole hatches.

Accommodations

Phase Two offers two single berths in the master stateroom with an ensuite head and enclosed shower; and a guest stateroom forward with a v-berth. The guest stateroom head is port aft of the stateroom and across from the galley. There is also a sleeper sofa in the salon.

Salon

The salon offers a sleeper sofa and folding hi/lo table starboard aft, lounge chair and counter starboard forward, lounge chair port forward, bulkhead cabinets to port, carpet, opening side windows with shades and curtains, steps to the sundeck and engine room access hatches.

Galley

The down galley is located starboard forward. - GE refrigerator/freezer - Princess 3-burner electric cooktop and oven - GE microwave oven - Large stainless steel sink - Storage drawers and cabinets - U-Line icemaker in the salon

Dining

Dining space is available at the salon folding hi/lo table.

Master Stateroom

The full-beam master stateroom aft offers two single berths, 4 portlights with curtains, 2 transom portlights with curtains, overhead hatch, storage drawers and cabinets, hanging locker, carpet, full-length mirror and an ensuite head with enclosed shower.

Guest Stateroom

The guest stateroom forward offers a v-berth, 2 portlights with curtains, overhead hatch with a screen, carpet, storage drawers, hanging locker, reading light and full-length mirror. The head is located to port and aft of the guest stateroom and across from the galley.

Fly Bridge

The flybridge offers a bimini, Eisenglass enclosure, carpet over non-skid deck, benchseat with storage underneath on each side, storage under the forward console, Springfield helmseat and 3 steps to the sundeck.

Sundeck

The sundeck offers a hardtop, Eisenglass enclosure, carpet over non-skid deck, transom and side gates, teak cap rails on stainless steel stanchions with weather boards, 2 lounge chairs, sofa, coffee table, wet bar/storage cabinet starboard forward, 3 steps to the flybridge and side deck access.

Audio & Visual Equipment

- JVC HR-XVC1U VHS/DVD player in the salon - Kenwood VR-705 A/V surround receiver in the salon - Realistic SCP-32 cassette player in the salon - Vanco SS-3 speaker selector in the salon - Maximum Marine stereo/cassette player on the flybridge - Cybernet speakers - Shakespeare 2020 TV antenna

Electronics

- Raytheon 1603 Radar - Robertson AP1000 autopilot (Inoperable) - Datamarine LX201 depth sounder - Uniden ES UM525 VHF - B&G Focus multi display - Navman Tracker 5600 chart plotter - KVH Azimuth 1000 digital compass - Raritan rudder angle indicator - Weems & Plath clock and barometer in the salon

Electrical Equipment

- Onan MDKD-3CR/1A 8 kW generator with approximately 1,490 hours - Magnum inverter - Sentry C140-3N battery charger - 2 X 30 amp shore power cords - 12vdc outlet on the flybridge - Professional Mariner battery test panel

Deck Equipment

- Anchor Lift anchor windlass with foot control and remote on the flybridge - Delta Fast-set plow type anchor - Non-skid deck - Stainless steel fender racks - Stainless steel deck hardware - Stainless steel stanchions with double lifelines - Windscreen cover - Washdown aft - Stainless steel swim ladder - Stainless steel & teak swimplatform ladder - Teak swimplatform

Safety & Fire Protection

- Fireboy 100CG Halon 1301 engine room fire suppression system - Lifesling Overboard Rescue System - Lifering - Fire extinguishers - Rule bilge pumps - First Alert smoke alarm - Safe-T-Alert carbon monoxide monitor

Exclusions

- Sellers' personal belongings

Exclusions

Owner's personal belongings.

Disclaimer

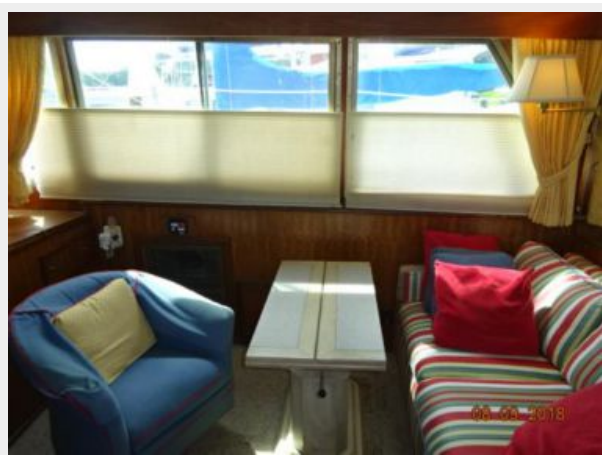
The Company offers the details of this vessel or yacht in good faith but cannot guarantee or warrant the accuracy of this information nor warrant the condition of the vessel. A buyer should instruct his representatives, agents, or his surveyors, to investigate such details as the buyer desires validated. This vessel or yacht is offered subject to prior sale, price change, or withdrawal without notice.

PHOTOS

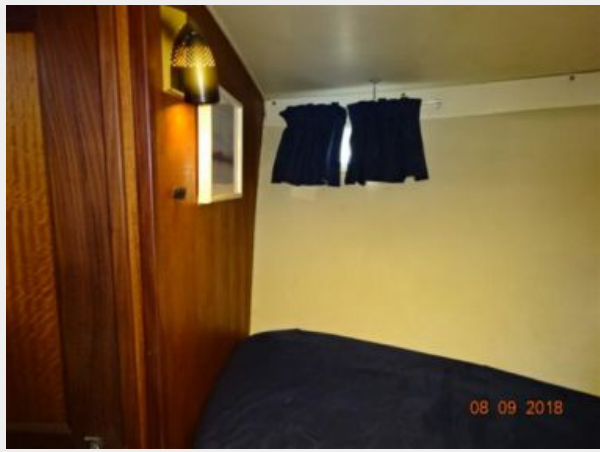


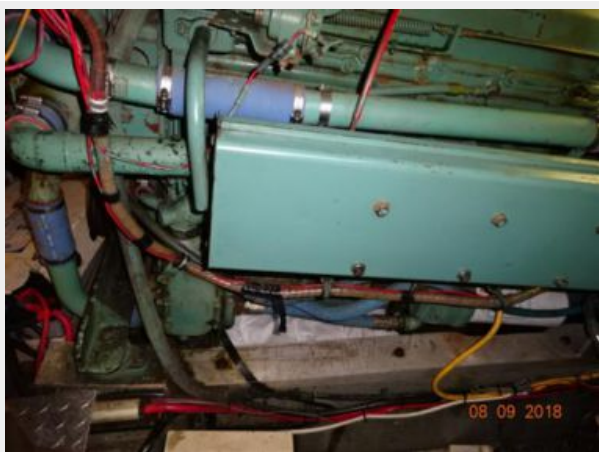


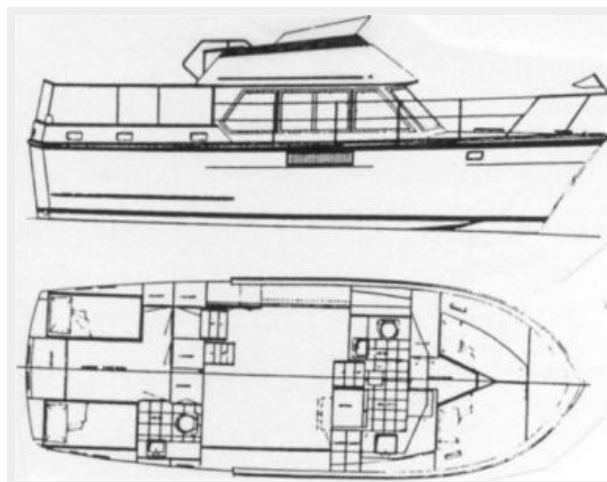












CONTACTS

Andrey Shestakov, leading yacht broker of the sales department of Shestakov Yacht Sales Inc. Shestakov Yacht Sales Inc., the official representative of the Miami/Fort Lauderdale FL headquarters.

Contact details

Email: andrey@shestakovyachtsales.com

Web: shestakovyachtsales.com/en/

Telephones

USA: +1(954)274-4435

Office hours

Monday – Saturday: **9:00 - 21:00** EDT

Sunday: **closed**

Address



Harbour Towne Marina, 850 NE 3rd St,
STE 213, Dania, FL 33004