

ROBERTSON AND CAINE — LEOPARD



Судостроитель: LEOPARD

Длина общая: 45' 0" (13.72m)

Год постройки: 2001

Модель: Катамаран

Цена: ЦЕНА ЯХТЫ ПО ЗАПРОСУ

Местонахождение: United States

Купить **Robertson and Caine — LEOPARD** а также выбрать подходящую вам яхту из нашего каталога яхт вам поможет опытный яхтенный брокер Андрей Шестаков. На сегодняшний день компания **Shestakov Yacht Sales Inc.** имеет большое количество яхт в собственном списке продаж, а также тесно сотрудничает со всеми крупными яхтенными производителями по всему миру.

Для того чтобы купить яхту **Robertson and Caine — LEOPARD** а также проконсультироваться по любому вопросу связанному с покупкой, продажей, чартером яхт позвоните по телефону **+7(918)465-66-44**.

ОГЛАВЛЕНИЕ

ОГЛАВЛЕНИЕ	2
ХАРАКТЕРИСТИКИ	3
Обзор	3
Основная информация	3
Размеры	4
Размещение	4
Корпус и палуба	4
Информация о двигателе	4
ПОДРОБНОЕ ОПИСАНИЕ	5
Accommodations & Layout	5
Galley and Dinette	5
Mechanical Equipment and Details	6
Electrical	6
Electronics/Navigation Equipment	6
Sails & Rigging	7
Deck & Hull	7
Toys Included	8
Disclaimer	8
Исключения	8
Отказ от ответственности	8
ФОТОГРАФИИ	9
КОНТАКТЫ	16
Контактная информация	16
Телефоны	16
Время работы	16
Адрес	16

ХАРАКТЕРИСТИКИ

Обзор

- 4 Queen cabins/ 4 head layout perfect for a family!
- Many upgrades!
- NEW Yanmar starboard engine 2018
- NEW Yanmar Port engine 2017
- NEW Generator 2017
- Updated Garmin Electronics 2016
- NEW Standing rigging 2016
- New Batteries 2017
- New Electric heads 2017
- NEW bimini 2017
- NEW trampoline nets 2017
- Fresh "Bahama"bottom paint 2018
- Offering four queen staterooms each with a private head, fully equipped galley up that can accommodate numerous cooks and a spacious comfortable salon that can seat 10. There is room for all your guests to relax and enjoy themselves.
- The exterior is equally well designed offering an easy flow of traffic from the huge cockpit to the wide walkarounds and foredeck or aft platform. Whether you are dining alfresco at the wrap around cockpit table, reclining on the cushioned bench seating, enjoying the foredeck trampolines and "dolphin seats" or swimming off the large aft deck and swim steps, you will always find a comfortable place to enjoy the sun or the shade.
- From a handling standpoint, the raised double helm seat offers excellent visibility with all controls in easy reach. Roller furling genoa and Fully battened Main in a stack pack main offer simplicity of handling.
- It is extremely easy access to board at the stern swim platform or twin molded stairs. There is a locker to stow snorkeling gear and cockpit shower.
- USCG Documented
- Come see her today at Harbortown Marina in Fort Pierce!

Основная информация

Тип судна: Катамаран

Подкатегория: Катамаран

Модельный год: 2001

Год постройки: 2001

Страна: United States

Размеры

Длина общая: 45' 0" (13.72m)

Размещение

Всего кают: 4

Всего ком. состава: 4

Корпус и палуба

Материал корпуса: Fiberglass

Информация о двигателе

Двигатели: 2

Производитель: Yanmar

Модель: 4JH3E

Тип двигателя: Inboard

Тип топлива: Diesel

ПОДРОБНОЕ ОПИСАНИЕ

Accommodations & Layout

- Beginning at the double opening doors you enter a large U shaped salon/dinette with seating for 10. The settee has an expandable table and also converts to a double berth. The nav station just to the right of the doors. The generous galley up is to port. Step down to each hull for two staterooms on each side. All the 4 staterooms offer queen size berths, upholstered bench, opening hatch and plenty of storage. Each private stateroom also has an en-suite head with shower. There is good ventilation with plenty of hatches and ports or sleep in air conditioned comfort.
- Spring loaded front opening doors w/Oceanair door blinds
- Laminate teak and holly sole
- U shaped settee with upholstered seating
- Oval up/down cocktail table/salon table seats 10
- Entertainment Center
- Nav Station/Chart Table w/ electric panels
- Clock & Barometer
- Sleeps 10, 4 cabins and salon table converts to berth
- Air conditioning in all staterooms
- 4 Staterooms with queen berths, upholstered seat, opening hatch and storage
- 4 New Electric Jabsco heads 2017
- New sink/shower faucets 2018
- Fold down shower seats
- 4 Large Lewmar hatches with reflective shades
- 8 small Lewmar hatches
- Numerous front and side opening ports
- Screens for all hatches
- 12V fans
- Emergency exit hatch under teak grate in the center of the salon
- (2) Full sheet sets and towels

Galley and Dinette

- This is a galley everyone will enjoy! Be part of the conversation in the salon, room for several cooks and plenty of workspace on the corian countertops.
- Sea Frost cold plate refrigeration and deep top loading freezer (engine driven and 110 volt)
- Force 10 Propane Stove/Oven with 4 burners
- Sand color Corian countertops
- SS double sinks
- Pressure water system w/ dual spare pump
- Wine bottle storage for 16 bottles

- Wine glass rack

Mechanical Equipment and Details

- Engine access from both stern opening hatches and under beds in aft staterooms.
- 2018 NEW Port 56hp Yanmar engine 10 hours
- 2017 NEW Stbd 56hp Yanmar engine 615 hrs
- 2018 Shafts and props trued
- (2) 90 amp alternators
- Racor fuel filters
- 3 bladed Max props
- 2017 NEW 4 Electric Jabsco toilets with 10 gal holding tanks and Y-valves
- 12 gal hot water
- Whale Gusher manual bilge pump
- 2014 (2) Air Conditioning in Staterooms (12,000 BTU)
- Needs AC unit in salon

Electrical

- 2017 NEW Phasor 8KW Generator 590 hrs
- 2017 NEW (4) 4D Gel House Batteries
- (2) Gel cell start batteries
- 150 amp Battery ChargerTrace
- 1.5 KW Battery Charger/Inverter (40 amp) 2017
- Electrical 12 V and 110 V
- Galvanic Isolator Zinc Saver II

Electronics/Navigation Equipment

- 2016 Garmin GPS Chartplotter
- Raytheon ST60 Depth Sounder
- Raytheon ST60 Wind and Speed
- Anamometer
- Autohelm 7000 Autopilot
- Horizon 6" compass
- Raytheon RC 425 Chart Plotter at Nav station
- Standard Eclipse VHF at Nav station
- Standard Horizon VHF at Helm 2016
- Water temperature indicator
- Sharp 13" TV / VCR
- Bose speakers

- Clarion CD player/stereo
- Panasonic 19" Flat screen TV

Sails & Rigging

- Roller furling genoa and stackpack main offers ease of handling.
- The traveler is on top of the arch.
- Excellent visibility and handling options at the raised double helm seat.
- Aluminum mast
- Double spreaders
- 2016 NEW Standing rigging, heavy gauge
- 2015 Sails refit - good condition
- 2017 NEW Oversized Stack Pack for Main Fully battened
- Main Sail
- 120 Genoa
- Pro Furl Roller Furling
- (2) 54 Lewmar ST winches
- (1) 44 Lewmar ST winch for traveller or use to assist dingy davits
- (2) Lemar ST winches on mast
- Sparcraft Vang Strut
- Main sheet traveler on stern arch

Deck & Hull

- You will practically live in this generous cockpit! Plenty of room to recline and dine or grab a good book and relax in shaded comfort. Dual helm set and comfortable seating while under way. You will enjoy the easy access on and off your dingy or swimming from the stern. There's still more room up front with bow seats to watch the dolphins or trampolines to sun bathe.
- Lofrans Tigres Electric windlass with push button control
- Bruce Anchor 110 lb
- Plow Anchor 45 lb
- 160' 1/2" Chain
- 2017 bimini top with zip out windshield and side extensions
- Rear Solar Tex sun shade to filter UV and allow ventilation to cockpit
- Cockpit cushions
- 2017 Trampoline nets
- Plenty of locker storage
- 2 large coolers
- BBQ grill
- SS dingy davits
- Well placed SS handholds

- Deck shower
- SS dive tank
- Life ring
- Plastic teak decking in cockpit and swim platform
- 2018 "Bahamas" bottom paint

Toys Included

- (6) full sets of snorkel gear...mask, snorkel, fins
- (2) Kayaks
- (2) Paddleboards

Disclaimer

The Company offers the details of this vessel in good faith but cannot guarantee or warrant the accuracy of this information nor warrant the condition of the vessel. A buyer should instruct his agents, or his surveyors, to investigate such details as the buyer desires validated. This vessel is offered subject to prior sale, price change, or withdrawal without notice.

Исключения

При продаже яхты исключаются личные вещи владельца.

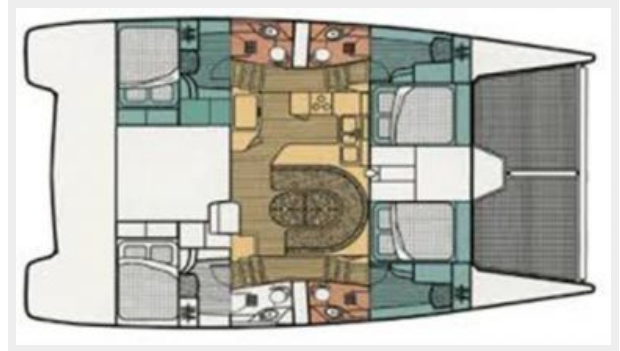
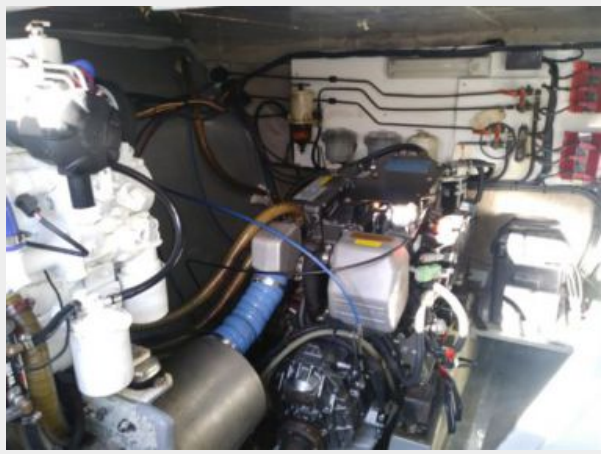
Отказ от ответственности

Компания предоставляет описание судна или яхты добросовестно, но не может гарантировать точность этой информации, а также не ручается за техническое состояние. Покупатель должен проинструктировать своих агентов или оценщиков исследовать представленную информацию более подробно, по собственному желанию. Продажа судна или яхты, изменение цены или снятие с продажи будет происходить без предварительного уведомления.

ФОТОГРАФИИ















КОНТАКТЫ

Андрей Шестаков (Andrey Shestakov) – ведущий яхтенный брокер отдела продаж яхт и судов компании Shestakov Yacht Sales Inc. Официальный представитель Shestakov Yacht Sales Inc. для русскоговорящих клиентов в центральном офисе компании в Майами/Форт Лодердейл/Флорида/США.

Контактная информация

Email: andrey@shestakovyachtsales.com

Web: shestakovyachtsales.com

Телефоны

Краснодарский край: **+7(918)465-66-44**

США, Майами, Флорида: **+1(954)274-4435**

Время работы

Понедельник – Суббота: **9:00 - 21:00**
EDT

Воскресенье: **Закрито**

Адрес



Harbour Towne Marina, 850 NE 3rd St,
STE 213, Dania, FL 33004