

GREAT EXPECTATIONS — SEA RAY



Судостроитель: [SEA RAY](#)

Год постройки: 2006

Модель: Крейсер

Цена: **ЦЕНА ЯХТЫ ПО ЗАПРОСУ**

Местонахождение: United States

Длина общая: 58' 0" (17.68m)

Ширина: 16' 0" (4.88m)

Макс. осадка: 4' 0" (1.22m)

Купить **Great Expectations — SEA RAY** а также выбрать подходящую вам яхту из нашего каталога яхт вам поможет опытный яхтенный брокер Андрей Шестаков. На сегодняшний день компания **Shestakov Yacht Sales Inc.** имеет большое количество яхт в собственном списке продаж, а также тесно сотрудничает со всеми крупными яхтенными производителями по всему миру.

Для того чтобы купить яхту **Great Expectations — SEA RAY** а также проконсультироваться по любому вопросу связанному с покупкой, продажей, чартером яхт позвоните по телефону **+7(918)465-66-44**.

ОГЛАВЛЕНИЕ

ОГЛАВЛЕНИЕ	2
ХАРАКТЕРИСТИКИ	4
Обзор	4
Основная информация	4
Размеры	4
Скорость, вместимость и масса	4
Размещение	4
Корпус и палуба	4
Информация о двигателе	5
ПОДРОБНОЕ ОПИСАНИЕ	6
HELM AND ELECTRONICS:	6
MASTER STATEROOM	6
MASTER HEAD	6
VIP STATEROOM	7
GUEST STATEROOM	7
GUEST HEAD/ SHOWER	7
GALLEY	8
DINETTE	8
TECHNICAL CONTROL STATION	8
ELECTRICAL SYSTEMS	9
GENERATOR	9
ENGINE ROOM	9
FUEL SYSTEM	10
WATER SYSTEM	10
WASTE SYSTEM	10
UNDERWATER GEAR	10
HULL & DECK FEATURES	11
CANVAS (SUNBRELLA)	11

WINDLASS SYSTEM	11
СОСКИТ FEATURES	11
Исключения	12
Отказ от ответственности	12
ФОТОГРАФИИ	13
КОНТАКТЫ	23
Контактная информация	23
Телефоны	23
Время работы	23
Адрес	23

ХАРАКТЕРИСТИКИ

Обзор

Beautiful 2006 58' Sea Ray Sedan Bridge, no disappointments!

Основная информация

Тип судна: Крейсер

Модельный год: 2006

Год постройки: 2006

Страна: United States

Открытая палуба мостика: Да

Размеры

Длина общая: 58' 0" (17.68m)

Ширина: 16' 0" (4.88m)

Макс. осадка: 4' 0" (1.22m)

Скорость, вместимость и масса

Водоизмещение: 51500 Pounds

Вместимость воды: 150 Gallons

Вместимость сточного бака: 68 Gallons

Объем топливного бака: 700 Gallons

Размещение

Всего кают: 3

Всего ком. состава: 2

Корпус и палуба

Материал корпуса: Fiberglass

Информация о двигателе

Двигатели: 2

Производитель: MAN

Модель: CRM V-8 DIESEL

Тип двигателя: Inboard

Тип топлива: Diesel

ПОДРОБНОЕ ОПИСАНИЕ

HELM AND ELECTRONICS:

- Great helm area with 2 large helm seats and overhead electronics box
- 2 7612 Garmins
- 2x MAN MMDS-CLC 6.3 Engine Monitors
- Raymarine VHF
- Vetus Bow Thruster/ stern thruster
- Rudder Angle Indicator
- Cockpit A/C
- Bridge Stereo
- Large storage area
- Drawer for charts
- Helm offers great visibility forward and aft
- Large bench seat behind helm seat with great storage & seating
- Garmin Autopilot
- ACR Search Light
- VHS Radio

MASTER STATEROOM

The master is full beam with an athwartship bed that you can easily access from 3 sides (easy to make) there are built-in nightstands with drawers on either side of the bed. The aft bulkhead is mirrored and there are large port lights in the hull giving the stateroom a very large feel.

- Queen size bed with innerspring mattress, pillows, sheets, coordinated spread and carpet storage below with a gas assisted hatch
- Corian counter tops
- Privacy door with full length bezeled mirror
- Hanging locker Maple lined with light
- Stereo, Bose Acoustimass with surround sound Jewel Cube speakers
- Dresser with drawers and lift top vanity
- Storage locker Maple lined with adjustable shelves
- Toshiba LCD Flatscreen TV
- DVD/CD/VCR unit with remote

MASTER HEAD

- Satin Finish Interior
- Access direct from stateroom with privacy door

- Wood flooring
- Stainless steel elliptical handrails
- Large Vacu flush head
- 24 Volt power vent
- Shower with seat shower wand and acrylic door
- Large Mirrored medicine chest
- Vanity with Corian counter top
- Grohe faucet and Stainless undermount sink

VIP STATEROOM

- Queen size bed with innerspring mattress
- Pillows, sheets and coordinated spread
- Carpeted storage beneath bed with gas assisted hatch
- Great amount of drawer storage
- Maple lined hanging locker with light
- Mirrored forward bulkhead
- Storage cabinet with drawes port side
- Overhead opening hatch with retractable sun and bug screens
- Toshiba Flatscreen TV/DVD
- Private access to head and shower
- SMX a/c control

GUEST STATEROOM

- Perpendicular upper and lower bunks
- Pillows, sheets and coordinated spreads
- Storage below bottom bunk
- Maple lined hanging locker with light
- Shelf storage
- Toshiba TV/DVD
- Splendide 2000 Washer/Dryer combo is located in companion way just forward of the guest stateroom

GUEST HEAD/ SHOWER

- Satin finish
- Access from hallway or VIP cabin to head
- Tile flooring

- Stainless steel elliptical hand rails
- Large Vacu-flush head
- Shower with seat and adjustable wand
- Mirrored medicine chest
- Vanity with solid surface counter top
- Solid surface sink with Grohe faucet
- Storage below vanity

GALLEY

- Corian countertops w/cutting board
- Sink w/single lever Moen faucet
- Lower storage cabinets
- Glass & dish storage w/wine rack
- Kenyon 2-burner recessed stove
- Wine rack w/custom bottle storage

- Sub Zero undercounter freezer w/icemaker
- Sub Zero undercounter refrigerator
- Panasonic icrowave/convection oven w/stainless steel face
- 12V outlet
- Power vent
- Slide-out trash receptacle
- Wood flooring

DINETTE

- Wrap-around seating with storage below

- Table with wood surface and storage below

TECHNICAL CONTROL STATION

- 24 Volt bow thruster
- Emergency engine stop
- Emergency engine start
- Compass
- Air horn with accumulator tank
- Brushed metal instrument panels
- Instrumentation, custom Sea Ray backlit with low glare blue night lighting and stainless steel bezels
- Electronic shift and throttle controls

- ACR remote control spotlight with dual halogen bulbs
- Power assisted hydraulic steering
- Wood accent tilt steering wheel
- Illuminated weatherproof rocker switches with dimmer control

ELECTRICAL SYSTEMS

- 4 8D batteries
- 1 group 27 battery for generator
- Battery charger 120V/10Amp/12V
- Battery charger 240V/50Amp/24V
- Battery charger overcurrent protection
- Battery equalizer
- Battery solenoid switches
- Cable TV inlet with cord
- Glendenning Cablemaster with 50' cord
- Shore power isolation transformer
- Color coded and labeled wiring with chafe protection

GENERATOR

- Onan 21.5 kW diesel
- Soundshield
- Remote start
- Sea cock and sea strainer
- Fuel filter
- Muffler
- Freshwater cooling
- Water heater 4 hours

ENGINE ROOM

- 3 24 volt bilge pumps/automatic
- 2 24 volt highwater bilge pumps/automatic
- Power Pac exhaust system with mufflers and sound insulation
- Fan
- Handheld fire extinguishers
- Automatic dual fire suppression system with engine shutdowns, overrides and manual pull
- Diamond plate fiberglass flooring
- Gel coated engine room
- 2" vinyl barrier insulation

- Stainless steel ladder removable, swing away
- Trouble light with cord reel
- Oil change system for engines, transmissions and generator

FUEL SYSTEM

- Selector for generator
- Racor dual fuel filters 2 per engine
- Type A1 fuel lines
- Aluminum tanks with electric sending units

WATER SYSTEM

- 150 gallon tank
- Water manifold system
- 18 gallon 240 volt water heater
- 2 24 volt water pumps
- Hot and cold shower at cockpit

WASTE SYSTEM

- Cabin sump pump 24 volt
- Central drain system
- Vacu flush head system
- Holding tank level indicators at MDP and heads
- 68 gallon holding tank
- Dockside pumpout fitting
- Macerator with seacock interlock system

UNDERWATER GEAR

- Bonding system with Zinc plate
- 2 1/2" Stainless steel Aquamet propeller shafts
- Nibral 4 blade cupped propellers
- Maganese Bronze rudders with stainless steel posts
- Sea cocks and sea strainers
- Dripless shaft logs and spare seal kit
- Maganese Bronze struts

- Trim tabs with dual rams with pump

HULL & DECK FEATURES

- 316 stainless steel bow rails with welded stanchions, intermediate rails and life lines
- 316 stainless steel deck rails, hand rails and deck plates
- 8 custom Sea Ray cleats stainless steel
- 6 portlights, stainless steel 2 opening
- 20x20 deck hatch

CANVAS (SUNBRELLA)

- Aft curtain
- Hardtop enclosure
- Windshield shades

WINDLASS SYSTEM

- Galvanized anchor
- Anchor locker with hatch
- Stainless steel anchor chute
- Anchor washdown with spigot and hose
- Windlass with foot switches

COCKPIT FEATURES

- Carpet liner snap in
- Sliding and lockable stainless steel door with screen
- Transom door
- Self bailing
- Stainless steel hand rails
- Engine hatch gas assisted
- Lighting
- GFI outlet
- Molded deck access steps
- Storage lockers
- Specifications
- Overall Length : 58'7" / 17.88 m
- Overall Length w/Opt. Hydraulic Swim Platform : 61'4" / 18.69 m
- Beam : 16' / 4.88 m

- Draft (Inboards) : 51" / 130 cm
- Dry Weight : 51,500 lbs / 23,360 kg
- Fuel Capacity : 700 gal / 2,649 L
- Water Capacity : 150 gal / 568 L
- Holding Tank : 68 gal / 257 L
- Dead Rise : 17° /

Исключения

При продаже яхты исключаются личные вещи владельца.

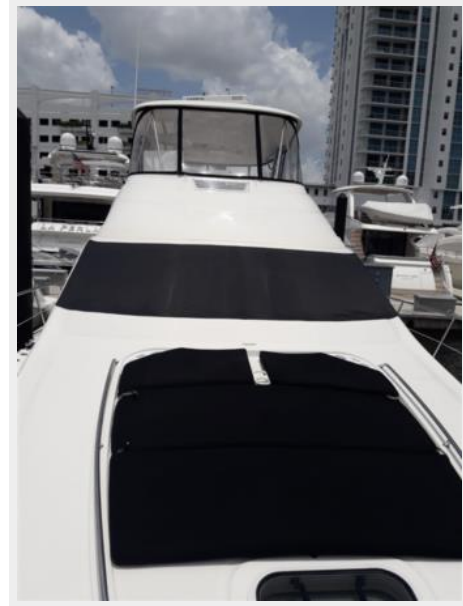
Отказ от ответственности

Компания предоставляет описание судна или яхты добросовестно, но не может гарантировать точность этой информации, а также не ручается за техническое состояние. Покупатель должен проинструктировать своих агентов или оценщиков исследовать представленную информацию более подробно, по собственному желанию. Продажа судна или яхты, изменение цены или снятие с продажи будет происходить без предварительного уведомления.

ФОТОГРАФИИ



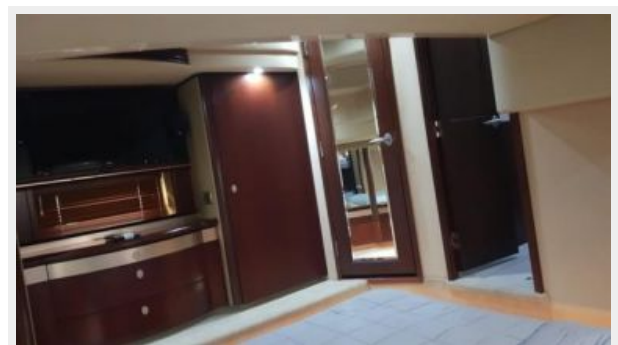
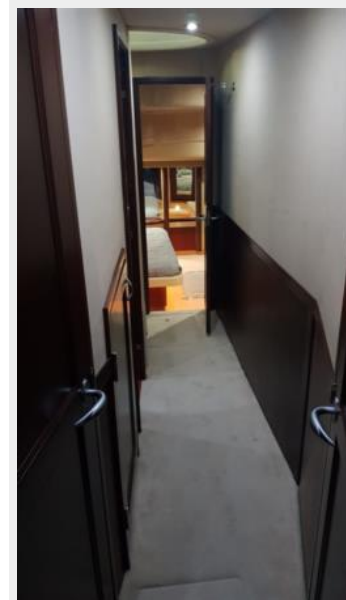
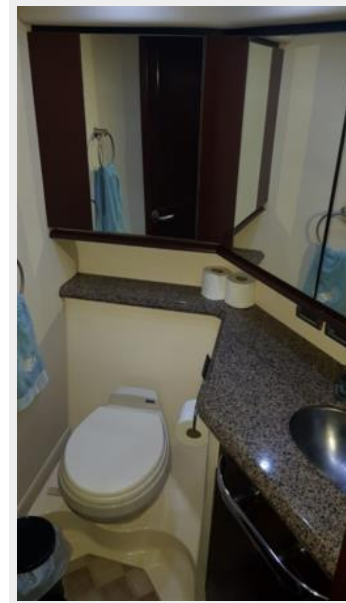
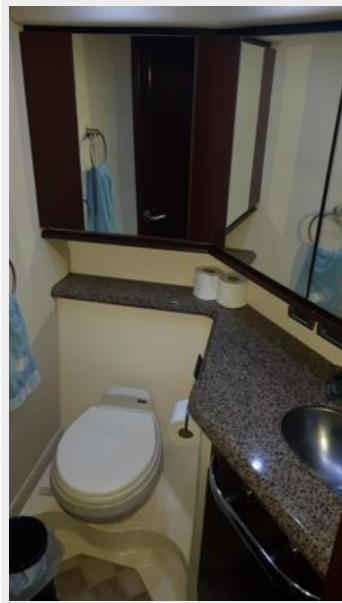




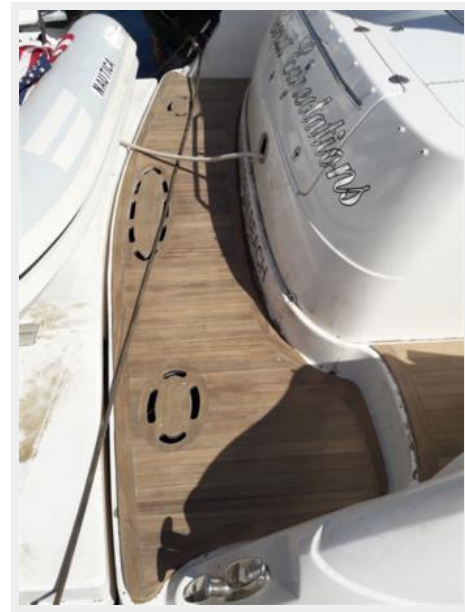














КОНТАКТЫ

Андрей Шестаков (Andrey Shestakov) – ведущий яхтенный брокер отдела продаж яхт и судов компании Shestakov Yacht Sales Inc. Официальный представитель Shestakov Yacht Sales Inc. для русскоговорящих клиентов в центральном офисе компании в Майами/Форт Лодердейл/Флорида/США.

Контактная информация

Email: andrey@shestakovyachtsales.com

Web: shestakovyachtsales.com

Телефоны

Краснодарский край: **+7(918)465-66-44**

США, Майами, Флорида: **+1(954)274-4435**

Время работы

Понедельник – Суббота: **9:00 - 21:00**
EDT

Воскресенье: **Закрето**

Адрес



Harbour Towne Marina, 850 NE 3rd St,
STE 213, Dania, FL 33004