

CENTURION — CIM SHIPYARD



Builder: CIM SHIPYARD

Year Built: 2007

Model: Cruising Sailboat

Price: PRICE ON APPLICATION

Location: Greece

LOA: 97' 6" (29.7mm)

Beam: 20.47

Min Draft: 10' 3" (3.12mm)

Cruise Speed: 8 Knots Kts. (9 MPH)

Max Speed: 13 Knots Kts. (15 MPH)

Our experienced yacht broker, Andrey Shestakov, will help you choose and buy a yacht that best suits your needs **Centurion — CIM SHIPYARD** from our catalogue. Presently, at Shestakov Yacht Sales Inc., we have a wide variety of yachts available on our sale's list. We also work in close contact with all the big yacht manufacturers from all over the world.

If you would like to buy a yacht **Centurion — CIM SHIPYARD** or would like help answering any questions concerning purchasing, selling or chartering a yacht, please call **+1(954)274-4435**

TABLE OF CONTENTS

TABLE OF CONTENTS	2
SPECIFICATIONS	3
Overview	3
Basic Information	13
Dimensions	13
Speed, Capacities and Weight	14
Accommodations	14
Hull and Deck Information	14
Engine Information	14
PHOTOS	15
CONTACTS	27
Contact details	27
Telephones	27
Office hours	27
Address	27

SPECIFICATIONS

Overview

BROKER'S COMMENTS

"The **Maxi 88** Centurion is a great entertainer. This **Maxi 88** is built in 2007 and number 11 from a series of 12. The Maxi 88 was built by the C.I.M. yard in Rochefort, France, now known for the construction of Nautitech catamarans. The **Maxi 88** has a huge very well protected social cockpit. Her sailing performance is well known within the industry. The Maxi 88 has great volume and accommodates a stunning total of 10 including crew, a huge professional galley, Laundry room and en suite for all the guest and owner"

Model MAXI 88

Type sailing yacht

LOA (m) 29,70

LWL (m) 21,00

Beam (m) 6,24

Draft (m) 3,12

Draft min (m) 3,00

Year built 2007

Launched 2007

Builder CIM shipyard Rochefort, France

Designer Sparkman & Stephens design no. 2494

Displacement (t) 65 light weight

Displacement (t) 80 Full

Ballast (t) lead 18

Gross tonnage 102

Net tonnage 63

Hull material GRP

Hull color blue

Hull shape round-bilged

Keel type bulb keel

Superstructure material GRP

Deck material GRP

Deck finish teak refitted 2017

Cockpit deck finish teak

Antifouling (year) 2017

Deck hatches all Goyot

8 stainless steel Portholes

Fuel tank (l) aluminum in total 3180 liter divided over 4 tanks 2 x 1070 and 2 x 520 l

Fuel Level indicator

Fuel day tank (l) aluminum 520 l. with level indicator at the helm

Freshwater tank (l) stainless steel in total 3940 L. in 4 tanks

freshwater Level indicator

Black water tank (l) stainless steel in total 1015 l. in 3 tanks

Black water Level indicator

Black water tank extraction on deck and extraction pump Feit M1 4200 l.

Grey water tank (l) stainless steel in total 310 liter in 2 tanks each with a discharge pump

Grey water Level indicators with individual gauge and alarm

Wheel steering with power steer and 2 double acting pumps with manual backup

Inside helm position in the cockpit also with powers steer

Emergency tiller

ACCOMMODATION

Cabins 3

Berths 6

2 Crew cabins

4 Crew berths

Total accommodation 10 in 5 cabins

Interior Natural aniegre with wild cherry and maple

Layout owners version

parquet flooring in salon

Aft deck with sun beds

for deck with sun beds

Headroom saloon (m) 2,2

Air-conditioning reverse cycle airco Frigit 72000 BTU cooling and 84000 BTC heating with individual controls in each cabin, the galley and the salon

MAXI 88

3

Navigation center at the entrance with chart table

Separate dining area in the salon

Dinette in crew galley/quarters

Perspex Sliding door to cockpit

Professional Galley in crew quarters

Corean Countertop

double deep stainless sink

Cooker 2 x gas 2 x electric

Oven Miele

Extractor Miele

Gas alarm

Microwave Miele

Steam oven Miele

2 x Fridge total 1200 l. blanc Marine frgomar seawater colled and cold plate

2 x Freezer total 700 l. blanc Marine frgomar seawater colled and cold plate

Wine cooler 110 l. in salon

Hot water system 220V in 2 boilers in total 300 liter 1 x 100 L. and 1 x 200 L.

Water pressure system 2x 60 l/min. ecojet pumps with 100l. pressure tank

Dishwasher Miele

Kettle

Ice maker Hobart FC 120

Coffee maker Espresso machine

Crockery for 10

Waste compactor

Owners cabin French bed

Bed length (m) 2.00

Wardrobe hanging/drawers/shelves

Bathroom and toilet en suite with bathtub in starboard bathroom

Toilet system electric Tecma silent plus4

Wash basin in the bathrooms

Shower en suite

Guest cabin 1 double bed Vip cabin (can be converted in 2 x single)

Bed length (m) 2.00

Wardrobe hanging and shelves

Bathroom en suite**Toilet en suite****Toilet system electric Tecma silent plus****Wash basin in the bathroom****Shower en suite****Guest cabin 2 double bed twin single converts to one double****Bed length (m) 2.00****Wardrobe hanging and shelves****Bathroom en suite****Toilet en suite****Toilet system electric Tecma silent plus****Wash basin in the bathroom****Shower en suite****Crew cabin 1 Captain****Double berth****Crew cabin 2****bunked****Total crew capacity 4 in 2 cabins 4****Crew bathroom shared****Bathroom with electric Tecma silent plus toilet****Wash basin****Shower****Laundry room adjacent to galley****with separate Washing machine Miele and Dryer Miele****Ironing facilities**

storage

Wet bar with freezer and sink in the social cockpit

Central social cockpit with steering wheel and hard top

MAXI 88

5

MACHINERY

No of engines 1

Make Caterpillar

Type DITA 3126

HP 313,00

kW 230,06

Fuel diesel

Year installed 2007

Maximum speed (kn) 13

Cruising speed (kn) 8 kn @ 1200 rpm

Consumption (l/hr) 10 l/h @ cruising speed

Range (nm) 2500 @cruising speed

Engine hours 5560

Engine cooling system freshwater heat exchanger

Drive shaft

Shaft seal

Engine controls mechanical

Gearbox Twin Disk MG 507 A 1:2,54 @7 degrees angle with Pythondrive

Bowthruster hydraulic Lewmar 300 SVAHT retractable 30 hp.

Propeller type feathering Max Prop

Propeller blades 3 blades 34" x 23"

Propeller shaft material stainless steel

Shaft lubrication water

Manual bilge pumps

Electric bilge pump 6x

Bilge alarm

Electrical installation 24 V. DC and 240 V. AC

Generator wet exhaust Kohler 27 Kva @ 1500 rpm

Running hours generator 3300

Generator 2 wet exhaust Kohler 27 Kva @ 1500 rpm

Running hours generator 2 3300

Start battery 220 Ah. 24 Volt with separate charger

Service battery 1500 AH 24 V. 2 V Cells supplied by Mastervolt Gel Batteries

Generator batteries 2 x 110 Ah. 24 Volt with separate charger

Battery charger Service 300 AH from 3 x 100 Ah Mastervolt chargers

Inverter 5000 W consisting of 2 x Mastervolt 2500 W. inverters

Diode battery combiners

Shorepower with cable 125A

Watermaker Idromar MC 55 230l/h

engineroom fans each 4800m3 ensuring overpressure

24 V. Gianneshi 1500 l. fuel transfer pump Scamdisc fuel polish system

Racor fuel separators for main engine and generators

NAVIGATION

Compass 2 x plastimo pedestal magnetic one at each helm

Electric compass B&G Halcyon 2000

Depth sounder B&G Hydra 2000 2 clocks

Log B&G Hydra 2000 with 2 clocks

Windset B&G Hydra 2000 with 2 clocks each for windspeed and direction

Repeater B&G Hydra 3000 FFD

VHF 2 x Furuno

Autopilot Navicontrol AP 3003

Rudder angle indicator Navicontrol

Radar Furuno M1834C 4 KW

GPS Furuno GP32

Radar/GPS/plotter Furuno one at the helm and one at the navigation table

Weather receiver BLU Receiver with software

Navtex NX 300

AIS receiver

Transmitter Furuno Felcom C smdsm inmarsat with printer and power supply

EPIRB at the helm

Navigation lights

Loudhailer

EQUIPMENT

Fixed windscreen for the central entertainment/steering cockpit with hardtop

Storm blinds for the portholes in the hull

Fixed hardtop fully integrated with mainsheet traveler

Bimini removable for aft deck

Cockpit cushions for all seating areas

Cockpit table

Bathing platform integrated hydraulic submersable tenderlift/bathing platform

Boarding ladder stainless steel removable

Transom door

Gangway hydraulic retractable

Deck shower at the submersible tenderlift

Anchor 90 KG

Anchor chain 90 meter 16 mm

Anchor 2 60 KG FOB stored below deck

Anchor chain 20 m. 14 mm chain and 100 m 32 mm line

Windlass hydraulic Muir 4000

Deck wash fresh water 1 x fore deck, 1 x aft deck + seawater anchor wash

Dinghy rigid inflatable Zodiac Yachtline II YL 420DL with steering console

Outboard Yamaha 40 hp.

Sea railing stainless steel

Grab rail (superstructure) stainless steel

Railing side opening gates 2

Pushpit

Pulpit

Life raft container 2 x 10 pers

Lifejackets

Safety harness

Lifebuoy

Danbuoy

Wipers with washdown

Horn

Fenders 8 x

Mooring lines ample

Spare parts**Tools****Alarm system integrated****TV 6 x flatscreen****TracVision ball KVH for multiple tv's****Radio-cd player 4 x****DVD player 2 x****Cockpit speakers 2 x****Speakers in salon 4 x****Speakers in cabin 2 x in each****Clock - barometer****Fire extinguisher****Auto extinguisher system in engineroom****RIGGING****Top rigged sloop****Standing rigging Dyform****Brand mast Sparcraft****Material mast aluminium****Spreaders 3****Keel stepped mast with hydraulic jack for static compression****Mainsail Incidennes 125 m3 9.3 oz inmast furling main with sun protector****Stoway mast with hydraulic furling**

Cutterstay Reckman hydraulic furling

Genoa I incidennes furling Genoa 145 m3 9.3 oz with sun protector

Genoa furler Reckman hydraulic furling

Gennaker 380 M2

Staysail Incidennes furling cuttersail 45 m3 9.3 oz self tacking

Backstay adjuster Navtec hydraulic

Boomvang Navtec hydraulic

Primary sheet winch 1 x Andersen 68 STH 2 speed stainless steel hydraulic

Secondary sheet winch 1 x Andersen 68 STH 2 speed stainless steel hydraulic

Genoa sheetwinches 2 x Andersen 111 STH 2 speed stainless steel hydraulic

Halyard winches 2 x Andersen 68 STH 2 speed stainless steel hydraulic

Reefing winch 2 x Andersen 68 ST 2 speed stainless steel runners

Multifunctional winches 1 x Andersen 68 STH 2 speed stainless steel hydraulic

Isolated backstay yes

Gleistein running rigging and Fredriksen " Big Boat" blocks/rail

Basic Information

Category: Cruising Sailboat

Sub Category: Cruising Sailboat

Model Year: 2007

Year Built: 2007

Country: Greece

Dimensions

LOA: 97' 6" (29.7mm)

LWL: 68' 11" (21mm)

Beam: 20.47

Min Draft: 10' 3" (3.12mm)

Speed, Capacities and Weight

Cruise Speed: 8 Knots Kts. (9 MPH)

Cruise Speed Range: 2500

Max Speed: 13 Knots Kts. (15 MPH)

Gross Tonnage: 102 Pounds

Water Capacity: 1041 Gallons

Holding Tank: 350 Gal Gallons

Fuel Capacity: 840 Gal Gallons

Fuel Consumption: 3 Gal Gallons

Accommodations

Total Cabins: 3

Total Berths: 6

Sleeps: 6

Total Heads: 3

Crew Cabin: 4

Crew Berths: 4

Crew Heads: 1

Hull and Deck Information

Hull Material: GRP

Deck Material: Aluminum

Hull Configuration: Round

Hull Color: blue

Hull Designer: Sparkman & Stephens

Exterior Designer: Sparkman & Stephens

Interior Designer: Sparkman & Stephens

Engine Information

Engines: 1

Manufacturer: Caterpillar

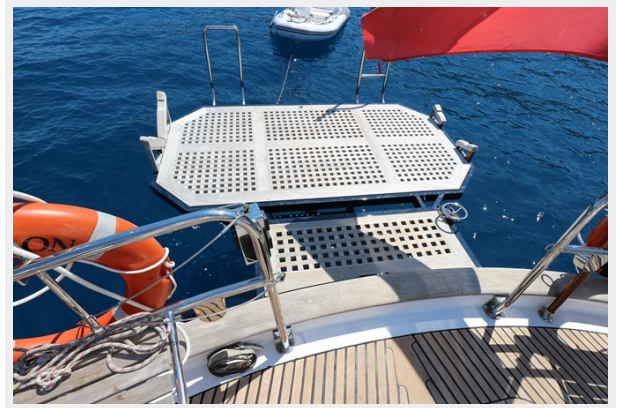
Engine Type: Inboard

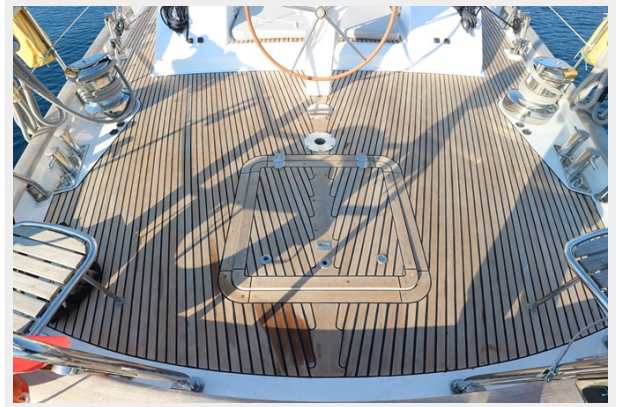
Fuel Type: Diesel

PHOTOS







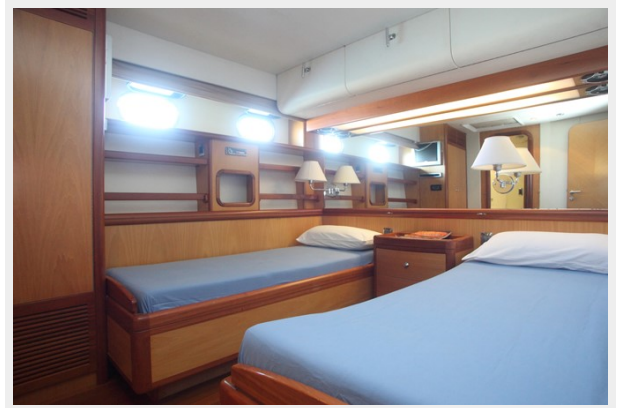
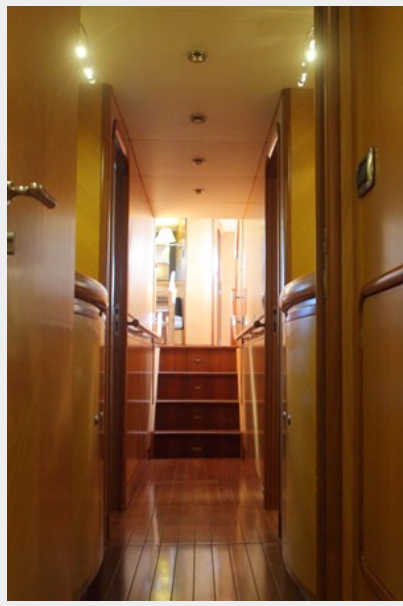


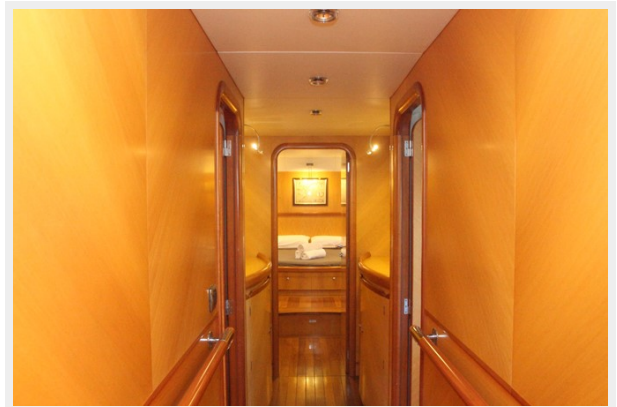




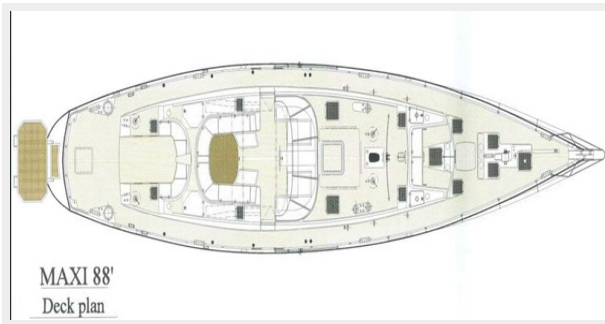












CONTACTS

Andrey Shestakov, leading yacht broker of the sales department of Shestakov Yacht Sales Inc. Shestakov Yacht Sales Inc., the official representative of the Miami/Fort Lauderdale FL headquarters.

Contact details

Email: andrey@shestakovyachtsales.com

Web: shestakovyachtsales.com/en/

Telephones

USA: +1(954)274-4435

Office hours

Monday – Saturday: **9:00 - 21:00** EDT

Sunday: **closed**

Address



Harbour Towne Marina, 850 NE 3rd St,
STE 213, Dania, FL 33004