

CENTURION — CIM SHIPYARD



Судостроитель: CIM SHIPYARD

Год постройки: 2007

Модель: Крейсерская яхта

Цена: **ЦЕНА ЯХТЫ ПО ЗАПРОСУ**

Местонахождение: Greece

Длина общая: 97' 6" (29.7mm)

Ширина: 20.47

Мин. осадка: 10' 3" (3.12mm)

Крейс. скорость: 8 Knots Kts. (9 MPH)

Макс. скорость: 13 Knots Kts. (15 MPH)

Купить Centurion — CIM SHIPYARD а также выбрать подходящую вам яхту из нашего каталога яхт вам поможет опытный яхтенный брокер Андрей Шестаков. На сегодняшний день компания Shestakov Yacht Sales Inc. имеет большое количество яхт в собственном списке продаж, а также тесно сотрудничает со всеми крупными яхтенными производителями по всему миру.

Для того чтобы купить яхту Centurion — CIM SHIPYARD а также проконсультироваться по любому вопросу связанному с покупкой, продажей, чартером яхт позвоните по телефону **+7(918)465-66-44**.

ОГЛАВЛЕНИЕ

ОГЛАВЛЕНИЕ	2
ХАРАКТЕРИСТИКИ	3
Обзор	3
Основная информация	13
Размеры	13
Скорость, вместимость и масса	14
Размещение	14
Корпус и палуба	14
Информация о двигателе	14
ФОТОГРАФИИ	15
КОНТАКТЫ	27
Контактная информация	27
Телефоны	27
Время работы	27
Адрес	27

ХАРАКТЕРИСТИКИ

Обзор

BROKER'S COMMENTS

"The **Maxi 88** Centurion is a great entertainer. This **Maxi 88** is built in 2007 and number 11 from a series of 12. The Maxi 88 was built by the C.I.M. yard in Rochefort, France, now known for the construction of Nautitech catamarans. The **Maxi 88** has a huge very well protected social cockpit. Her sailing performance is well known within the industry. The Maxi 88 has great volume and accommodates a stunning total of 10 including crew, a huge professional galley, Laundry room and en suite for all the guest and owner"

Model MAXI 88

Type sailing yacht

LOA (m) 29,70

LWL (m) 21,00

Beam (m) 6,24

Draft (m) 3,12

Draft min (m) 3,00

Year built 2007

Launched 2007

Builder CIM shipyard Rochefort, France

Designer Sparkman & Stephens design no. 2494

Displacement (t) 65 light weight

Displacement (t) 80 Full

Ballast (t) lead 18

Gross tonnage 102

Net tonnage 63

Hull material GRP

Hull color blue

Hull shape round-bilged

Keel type bulb keel

Superstructure material GRP

Deck material GRP

Deck finish teak refitted 2017

Cockpit deck finish teak

Antifouling (year) 2017

Deck hatches all Goyot

8 stainless steel Portholes

Fuel tank (l) aluminum in total 3180 liter divided over 4 tanks 2 x 1070 and 2 x 520 l

Fuel Level indicator

Fuel day tank (l) aluminum 520 l. with level indicator at the helm

Freshwater tank (l) stainless steel in total 3940 L. in 4 tanks

freshwater Level indicator

Black water tank (l) stainless steel in total 1015 l. in 3 tanks

Black water Level indicator

Black water tank extraction on deck and extraction pump Feit M1 4200 l.

Grey water tank (l) stainless steel in total 310 liter in 2 tanks each with a discharge pump

Grey water Level indicators with individual gauge and alarm

Wheel steering with power steer and 2 double acting pumps with manual backup

Inside helm position in the cockpit also with powers steer

Emergency tiller

ACCOMMODATION

Cabins 3

Berths 6

2 Crew cabins

4 Crew berths

Total accommodation 10 in 5 cabins

Interior Natural aniegre with wild cherry and maple

Layout owners version

parquet flooring in salon

Aft deck with sun beds

for deck with sun beds

Headroom saloon (m) 2,2

Air-conditioning reverse cycle airco Frigit 72000 BTU cooling and 84000 BTC heating with individual controls in each cabin, the galley and the salon

MAXI 88

3

Navigation center at the entrance with chart table

Separate dining area in the salon

Dinette in crew galley/quarters

Perspex Sliding door to cockpit

Professional Galley in crew quarters

Corean Countertop

double deep stainless sink

Cooker 2 x gas 2 x electric

Oven Miele

Extractor Miele

Gas alarm

Microwave Miele

Steam oven Miele

2 x Fridge total 1200 l. blanc Marine frgomar seawater colled and cold plate

2 x Freezer total 700 l. blanc Marine frgomar seawater colled and cold plate

Wine cooler 110 l. in salon

Hot water system 220V in 2 boilers in total 300 liter 1 x 100 L. and 1 x 200 L.

Water pressure system 2x 60 l/min. ecojet pumps with 100l. pressure tank

Dishwasher Miele

Kettle

Ice maker Hobart FC 120

Coffee maker Espresso machine

Crockery for 10

Waste compactor

Owners cabin French bed

Bed length (m) 2.00

Wardrobe hanging/drawers/shelves

Bathroom and toilet en suite with bathtub in starboard bathroom

Toilet system electric Tecma silent plus4

Wash basin in the bathrooms

Shower en suite

Guest cabin 1 double bed Vip cabin (can be converted in 2 x single)

Bed length (m) 2.00

Wardrobe hanging and shelves

Bathroom en suite

Toilet en suite

Toilet system electric Tecma silent plus

Wash basin in the bathroom

Shower en suite

Guest cabin 2 double bed twin single converts to one double

Bed length (m) 2.00

Wardrobe hanging and shelves

Bathroom en suite

Toilet en suite

Toilet system electric Tecma silent plus

Wash basin in the bathroom

Shower en suite

Crew cabin 1 Captain

Double berth

Crew cabin 2

bunked

Total crew capacity 4 in 2 cabins 4

Crew bathroom shared

Bathroom with electric Tecma silent plus toilet

Wash basin

Shower

Laundry room adjacent to galley

with separate Washing machine Miele and Dryer Miele

Ironing facilities

storage**Wet bar with freezer and sink in the social cockpit****Central social cockpit with steering wheel and hard top****MAXI 88****5****MACHINERY****No of engines 1****Make Caterpillar****Type DITA 3126****HP 313,00****kW 230,06****Fuel diesel****Year installed 2007****Maximum speed (kn) 13****Cruising speed (kn) 8 kn @ 1200 rpm****Consumption (l/hr) 10 l/h @ cruising speed****Range (nm) 2500 @cruising speed****Engine hours 5560****Engine cooling system freshwater heat exchanger****Drive shaft****Shaft seal****Engine controls mechanical****Gearbox Twin Disk MG 507 A 1:2,54 @7 degrees angle with Pythondrive****Bowthruster hydraulic Lewmar 300 SVAHT retractable 30 hp.****Propeller type feathering Max Prop****Propeller blades 3 blades 34" x 23"**

Propeller shaft material stainless steel

Shaft lubrication water

Manual bilge pumps

Electric bilge pump 6x

Bilge alarm

Electrical installation 24 V. DC and 240 V. AC

Generator wet exhaust Kohler 27 Kva @ 1500 rpm

Running hours generator 3300

Generator 2 wet exhaust Kohler 27 Kva @ 1500 rpm

Running hours generator 2 3300

Start battery 220 Ah. 24 Volt with separate charger

Service battery 1500 AH 24 V. 2 V Cells supplied by Mastervolt Gel Batteries

Generator batteries 2 x 110 Ah. 24 Volt with separate charger

Battery charger Service 300 AH from 3 x 100 Ah Mastervolt chargers

Inverter 5000 W consisting of 2 x Mastervolt 2500 W. inverters

Diode battery combiners

Shorepower with cable 125A

Watermaker Idromar MC 55 230l/h

engineroom fans each 4800m3 ensuring overpressure

24 V. Gianneshi 1500 l. fuel transfer pump Scamdisc fuel polish system

Racor fuel separators for main engine and generators

NAVIGATION

Compass 2 x plastimo pedestal magnetic one at each helm

Electric compass B&G Halcyon 2000

Depth sounder B&G Hydra 2000 2 clocks

Log B&G Hydra 2000 with 2 clocks

Windset B&G Hydra 2000 with 2 clocks each for windspeed and direction

Repeater B&G Hydra 3000 FFD

VHF 2 x Furuno

Autopilot Navicontrol AP 3003

Rudder angle indicator Navicontrol

Radar Furuno M1834C 4 KW

GPS Furuno GP32

Radar/GPS/plotter Furuno one at the helm and one at the navigation table

Weather receiver BLU Receiver with software

Navtex NX 300

AIS receiver

Transmitter Furuno Felcom C smdsm inmarsat with printer and power supply

EPIRB at the helm

Navigation lights

Loudhailer

EQUIPMENT

Fixed windscreen for the central entertainment/steering cockpit with hardtop

Storm blinds for the portholes in the hull

Fixed hardtop fully integrated with mainsheet traveler

Bimini removable for aft deck

Cockpit cushions for all seating areas

Cockpit table

Bathing platform integrated hydraulic submersable tenderlift/bathing platform

Boarding ladder stainless steel removable

Transom door

Gangway hydraulic retractable

Deck shower at the submersible tenderlift

Anchor 90 KG

Anchor chain 90 meter 16 mm

Anchor 2 60 KG FOB stored below deck

Anchor chain 20 m. 14 mm chain and 100 m 32 mm line

Windlass hydraulic Muir 4000

Deck wash fresh water 1 x fore deck, 1 x aft deck + seawater anchor wash

Dinghy rigid inflatable Zodiac Yachtline II YL 420DL with steering console

Outboard Yamaha 40 hp.

Sea railing stainless steel

Grab rail (superstructure) stainless steel

Railing side opening gates 2

Pushpit

Pulpit

Life raft container 2 x 10 pers

Lifejackets

Safety harness

Lifebuoy

Danbuoy

Wipers with washdown

Horn

Fenders 8 x

Mooring lines ample

Spare parts**Tools****Alarm system integrated****TV 6 x flatscreen****TracVision ball KVH for multiple tv's****Radio-cd player 4 x****DVD player 2 x****Cockpit speakers 2 x****Speakers in salon 4 x****Speakers in cabin 2 x in each****Clock - barometer****Fire extinguisher****Auto extinguisher system in engineroom****RIGGING****Top rigged sloop****Standing rigging Dyform****Brand mast Sparcraft****Material mast aluminium****Spreaders 3****Keel stepped mast with hydraulic jack for static compression****Mainsail Incidennes 125 m3 9.3 oz inmast furling main with sun protector****Stoway mast with hydraulic furling**

Cutterstay Reckman hydraulic furling

Genoa I incidennes furling Genoa 145 m3 9.3 oz with sun protector

Genoa furler Reckman hydraulic furling

Gennaker 380 M2

Staysail Incidennes furling cuttersail 45 m3 9.3 oz self tacking

Backstay adjuster Navtec hydraulic

Boomvang Navtec hydraulic

Primary sheet winch 1 x Andersen 68 STH 2 speed stainless steel hydraulic

Secondary sheet winch 1 x Andersen 68 STH 2 speed stainless steel hydraulic

Genoa sheetwinches 2 x Andersen 111 STH 2 speed stainless steel hydraulic

Halyard winches 2 x Andersen 68 STH 2 speed stainless steel hydraulic

Reefing winch 2 x Andersen 68 ST 2 speed stainless steel runners

Multifunctional winches 1 x Andersen 68 STH 2 speed stainless steel hydraulic

Isolated backstay yes

Gleistein running rigging and Fredriksen " Big Boat" blocks/rail

Основная информация

Тип судна: Крейсерская яхта

Подкатегория: Крейсерская яхта

Модельный год: 2007

Год постройки: 2007

Страна: Greece

Размеры

Длина общая: 97' 6" (29.7mm)

Длина по ватерлинии: 68' 11" (21mm)

Ширина: 20.47

Мин. осадка: 10' 3" (3.12mm)

Скорость, вместимость и масса

Крейс. скорость: 8 Knots Kts. (9 MPH)	Дальность на крейсерской скорости: 2500
Макс. скорость: 13 Knots Kts. (15 MPH)	Чистый вес: 102 Pounds
Вместимость воды: 1041 Gallons	Вместимость сточного бака: 350 Gal Gallons
Объем топливного бака: 840 Gal Gallons	Расход топлива: 3 Gal Gallons

Размещение

Всего кают: 3	Всего коек: 6
Спальные места: 6	Всего ком. состава: 3
Каюты экипажа: 4	Койки экипажа: 4
Комм. состав экипажа: 1	

Корпус и палуба

Материал корпуса: GRP	Материал палубы: Aluminum
Комплектация корпуса: Round	Цвет корпуса: blue
Дизайнер корпуса: Sparkman & Stephens	Дизайнер экстерьера: Sparkman & Stephens
Дизайнер интерьера: Sparkman & Stephens	

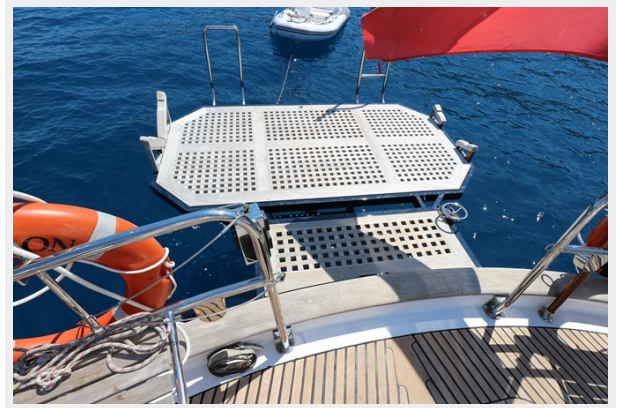
Информация о двигателе

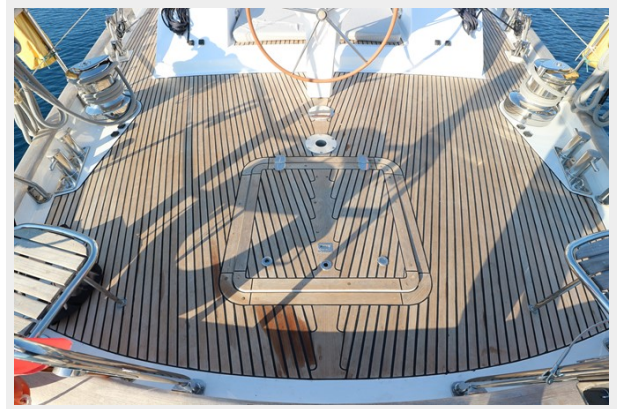
Двигатели: 1	Производитель: Caterpillar
Тип двигателя: Inboard	Тип топлива: Diesel

ФОТОГРАФИИ







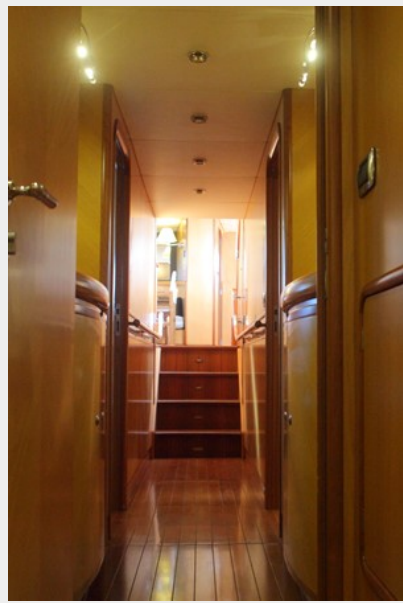


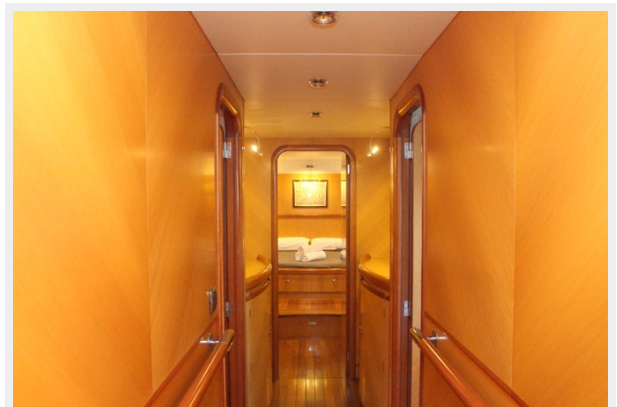




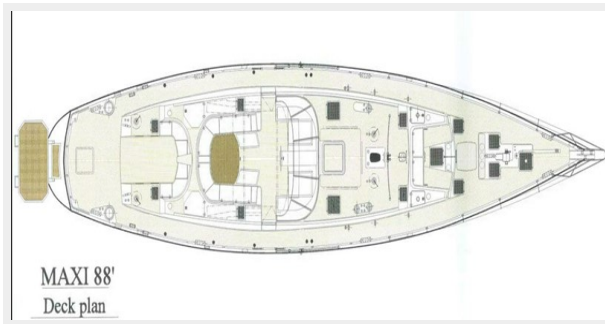












КОНТАКТЫ

Андрей Шестаков (Andrey Shestakov) – ведущий яхтенный брокер отдела продаж яхт и судов компании Shestakov Yacht Sales Inc. Официальный представитель Shestakov Yacht Sales Inc. для русскоговорящих клиентов в центральном офисе компании в Майами/Форт Лодердейл/Флорида/США.

Контактная информация

Email: andrey@shestakovyachtsales.com

Web: shestakovyachtsales.com

Телефоны

Краснодарский край: **+7(918)465-66-44**

США, Майами, Флорида: **+1(954)274-4435**

Время работы

Понедельник – Суббота: **9:00 - 21:00**
EDT

Воскресенье: **Закрето**

Адрес



Harbour Towne Marina, 850 NE 3rd St,
STE 213, Dania, FL 33004