

## HIDEOUT — SUNSEEKER



**Судостроитель:** [SUNSEEKER](#)

**Год постройки:** 2017

**Модель:** Моторная яхта

**Цена:** **ЦЕНА ЯХТЫ ПО ЗАПРОСУ**

**Местонахождение:** United States

**Длина общая:** 95' 0" (28.96m)

**Ширина:** 21' 6" (6.55m)

**Макс. осадка:** 7' 0" (2.13m)

**Макс. скорость:** 24 Kts. (28 MPH)

Купить **Hideout — SUNSEEKER** а также выбрать подходящую вам яхту из нашего **каталога яхт** вам поможет опытный яхтенный брокер Андрей Шестаков. На сегодняшний день компания **Shestakov Yacht Sales Inc.** имеет большое количество яхт в **собственном списке продаж**, а также тесно сотрудничает со всеми крупными **яхтенными производителями** по всему миру.

Для того чтобы купить яхту **Hideout — SUNSEEKER** а также проконсультироваться по любому вопросу связанному с покупкой, продажей, чартером яхт позвоните по телефону **+7(918)465-66-44**.

# ОГЛАВЛЕНИЕ

---

ОГЛАВЛЕНИЕ	2
ХАРАКТЕРИСТИКИ	4
Обзор	4
Основная информация	4
Размеры	4
Скорость, вместимость и масса	4
Размещение	5
Корпус и палуба	5
Информация о двигателе	5
ПОДРОБНОЕ ОПИСАНИЕ	6
Flybridge	6
Flybridge Helm	6
Deck	7
Aft Cockpit	8
Bathing Platform	8
Covers	9
Saloon and Dinning	9
Galley	10
Main Helm Console and Observation Area	11
Day Head Toliet	12
Main Deck Master Stateroom	12
Master Stateroom Dressing Room/ En Suite Master Stateroom Dressing Room	13
Lower Deck Lobby	14
Midships VIP Stateroom (4 Cabin layout)	14
Midships VIP Walk-in Wardrobe	15
Midships VIP En Suite	16
Aft Starboard Twin Guest Cabin	16
Aft Starboard En Suite	17

---

Aft Port Twin Guest Cabin	17
Aft Port Twin En Suite	18
Aft Crew Mess	19
Port Crew Cabin	20
Starboard Crew Cabin	20
Crew Toilet & Shower	21
Engine Compartment and Ancillaries	21
Electrical System	22
Underwater Gear	23
Systems	23
Miscellaneous	25
Исключения	25
Отказ от ответственности	25
<b>ФОТОГРАФИИ</b>	<b>27</b>
<b>КОНТАКТЫ</b>	<b>43</b>
Контактная информация	43
Телефоны	43
Время работы	43
Адрес	43

---

# ХАРАКТЕРИСТИКИ

## Обзор

The 95 Yacht exemplifies the latest in Sunseeker's cutting-edge design and innovative build processes. With all the spacious elegance of its highly successful predecessor, the 28 Metre Yacht, it combines a superyacht feel with all the practical advantages of a yacht in this size category.

## Основная информация

<b>Тип судна:</b> Моторная яхта	<b>Подкатегория:</b> Flybridge
<b>Модельный год:</b> 2017	<b>Год постройки:</b> 2017
<b>Страна:</b> United States	<b>Верх:</b> Hardtop
<b>Открытая палуба мостика:</b> Да	

## Размеры

<b>Длина общая:</b> 95' 0" (28.96m)	<b>Ширина:</b> 21' 6" (6.55m)
<b>Макс. осадка:</b> 7' 0" (2.13m)	<b>Трапы:</b> 23' 0" (7.01m)

## Скорость, вместимость и масса

<b>Макс. скорость:</b> 24 Kts. (28 MPH)	<b>Макс. скорость поворота:</b> 2450 Kts.
<b>Водоизмещение:</b> 186731 Pounds	<b>Вместимость воды:</b> 462 Gallons
<b>Вместимость сточного бака:</b> 115 Gallons	<b>Объем топливного бака:</b> 3170 Gallons

## Размещение

---

Всего кают: 5

Спальные места: 10

Всего ком. состава: 6

Каюта капитана: Да

Каюты экипажа: 2

Койки экипажа: 4

Спальных мест экипажа: 4

Комм. состав экипажа: 1

## Корпус и палуба

---

Материал корпуса: Fiberglass

Материал палубы: Teak

Комплектация корпуса: Deep Vee

Цвет корпуса: White

## Информация о двигателе

---

Двигатели: 2

Производитель: MTU

Модель: 12V 2000 M96

Тип двигателя: Inboard

Тип топлива: Diesel

---

# ПОДРОБНОЕ ОПИСАНИЕ

---

## Flybridge

---

- Self-draining cockpit
- Acrylic deflecting spray screen
- Seating areas Storage lockers under seating
- Teak dining table (natural finish) with stainless steel pedestal
- Stainless steel aft safety rails
- Glass holders
- Wetbar unit Sink in wetbar unit Icemaker in wetbar unit
- Fridge in wetbar unit Ceramic electric griddle in wetbar unit
- Fire extinguisher in wetbar locker
- Deckwash outlet
- Low-level flybridge LED lighting (24v) Radar arch structure
- Radar chair with navigation light assembly
- Overhead LED lighting on underside of radar arch (24v) Four marine speakers controlled via Sonos Teak decking Ensign staff and socket

## Flybridge Helm

---

- Two helm seats
- Hydraulic steering
- Duplicate engine controls
- Analogue engine instrumentation
- Autopilot repeater
- Radar/chart plotter with GPS repeater
- Depth and speed multi display Cm8 monitoring system display

- Fuel display VHF second station
- Remote spotlight control
- Magnetic compass
- Trim tab control
- Horn control
- Waterproof plug and socket 12v
- Waterproof USB charger outlet

## Deck

---

- Teak decking
- Fittings all in 316 stainless steel and chromed bronze
- Pair stainless steel bow mooring bollards and fairleads
- Stainless steel spring cleats
- Pair stern mooring bollards and fairleads
- Stainless steel pulpit and cockpit rails
- Stainless steel bow roller with anchor stop and devil's claw
- Single electric windlass 24v, starboard side, foredeck control only
- Anchor 100kg claw-type (galvanised)
- Anchor chain 100 metres (12mm diameter, galvanised)
- Stainless steel bow plate
- Deckwash with outlets forward and aft
- Chain locker
- Curved direct glazed safety glass windscreen
- Pantograph windscreen wipers and washers
- Fresh-water filler
- Fuel fillers port and starboard with display IMCO navigation lights

- Remote controlled spotlight at bow
- Low-level courtesy LED lights on side decks (24v) U-shaped bow seat
- Bow teak table (natural finish) on pedestal
- Large bow sunbed Glass holders

## Aft Cockpit

---

- Teak decking
- Self-draining
- Stairs to flybridge with teak treads
- Aft fixed U-shaped bench seating
- Teak table (natural finish) on stainless steel pedestal
- Stern safety gates
- Engine room access hatch 2 x stern capstan winches 24v and fairleads
- Overhead cockpit LED lights (24v)
- Low-level courtesy LED lights (24v)
- Two marine speakers controlled via Sonos
- Wetbar unit
- Sink in wetbar unit
- Icemaker in wetbar unit
- Refrigerator in wetbar unit
- Fire extinguisher in wetbar locker

## Bathing Platform

---

- Teak decked hydraulic lifting bathing platform (maximum lifting capacity 650kg/1433lb, maximum tender weight 550kg/1212lb)
- Stairs to aft cockpit with teak decking treads



- Stern spring cleats for stern-to-mooring purposes
- Foldout stainless steel swimming ladder
- Hot and cold hand-held swimming shower
- Fresh-water marina connection
- Ethernet network connection
- Large transom storage lockers
- Access to crew quarters
- Dockside AC connection
- 5m hydraulic telescopic passerelle

## Covers

---

- Windscreen sun screen
- Flybridge instrument cover
- Aft cockpit camper cover with windows

## Saloon and Dinning

---

- Stainless steel framed sliding door to aft cockpit
- Sliding door curtains with tie back
- Sofa seating
- Coffee table
- Scatter cushions
- Television (55") on rise and fall
- Blue-ray/CD/radio surround sound system with five speakers and sub-woofer
- Sonos audio system
- Air conditioning
- Side windows with blinds

- 
- Drinks cabinet with glassware stowage for eight (10 x Champagne, 10 x whisky, 1 x decanter)
  - LED overhead lighting (24v)
  - Double 220v AC sockets
  - Sensor connected to fire detection system
  - Telephone point 1 x table lamp
  - Dining table 8 x freestanding dining chairs
  - Storage cupboards
  - Fitted carpet
  - Access to galley
  - Access to master stateroom
  - Access to day head
  - Stairs leading to guest cabins

## Galley

---

- American style fridge/freezer with ice maker
- 4-ring ceramic hob
- Hob extractor
- Convection oven
- Microwave oven
- Full size dishwasher
- Stainless steel sink
- Hot and cold water
- Rubbish bin
- Crockery set (10 place settings)
- Cutlery set (10 place settings)
- Side window with blind

- Storage consisting of cupboards and drawers
- LED overhead lighting (24v)
- LED lighting under top box lockers (24v)
- Double AC sockets
- Sensor connected to fire detection system
- Air conditioning
- Fire blanket
- Fire extinguisher
- First aid kit
- Manual side opening door to access port side deck
- Access to dining and saloon

## **Main Helm Console and Observation Area**

---

- 1 x upholstered helm seats with electric operation
- Console with gloss black fascia panels
- Hydraulic power steering
- Leather bound steering wheel
- Radar/chart plotter with GPS
- Autopilot
- Depth and speed displays VHF radio first station
- Magnetic compass
- Horn control
- Switch panels
- Remote spotlight control
- Trim tab controls
- Digital engine instrumentation

- Cm8 monitoring system display
- Fuel display
- 12v socket outlet
- USB charger outlet Double 220v AC sockets
- LED overhead lighting (24v)
- Monitoring panel for fire detection system
- Windscreen wiper and washer controls synchronized and multi speed
- Air conditioning
- Screen demister
- Sofa observation seat
- Chart stowage area
- Glass holder
- Fire extinguisher 1

## Day Head Toilet

---

- Granite floor
- Washbasin Tap & accessories (toilet roll holder, soap dispenser, towel ring)
- Mirror
- Extractor fan
- LED overhead lighting (24v)

## Main Deck Master Stateroom

---

- Panoramic side window
- Double berth with foam mattress
- Storage beneath berth
- Drawers within berth

- Bed side drawer units
- Bedside wall lights 24v Vanity/office desk with shelves
- Desk stool
- Settee with removable tray
- Air conditioning Television (55") on bulkhead
- Blu-ray/CD/radio surround system with two speakers and sub-woofer
- Sonos audio system
- LED overhead lighting (24v)
- Double AC socket Fitted carpet
- Sensor connected to fire detection system
- Stairs leading to dressing room and en suite

## **Master Stateroom Dressing Room/ En Suite Master Stateroom Dressing Room**

---

### Master Stateroom Dressing Room

- Hanging rails
- Shelves
- Dressing table
- Stool for dressing table
- LED overhead lighting (24v)
- AC socket
- Fitted carpet

### Master Stateroom En Suite

- Toilet
- Granite flooring
- Large twin washbasin

- 
- Taps and accessories (toothbrush and glass holder, soap dispenser, towel rails and towels)
  - Separate shower compartment
  - Glass shower door
  - Extractor fan
  - Air conditioning outlet
  - Mirror
  - Storage cupboard
  - LED overhead lighting (24v)
  - Opening porthole with mosquito screen and
  - Venetian blind
  - Shaver socket 240/110v

## Lower Deck Lobby

---

- Stairs leading down from main deck saloon area
- LED overhead lighting 24v
- AC socket
- Fitted carpet
- Sensor connected to fire detection system
- Doors leading to lower deck guest accommodation

## Midships VIP Stateroom (4 Cabin layout)

---

Midships VIP Stateroom (4 Cabin layout)

- If 5 Cabin layout then this cabin is replaced with two cabins as per item 19 to 21
- Double berth with foam mattress
- Drawers within berth
- Bedside units with drawers

- Bedside wall lights 24v
- Dressing table
- Stool for dressing table
- Settee
- Air conditioning
- LED overhead lighting (24v)
- Panoramic window sets with round opening portlights
- (with mosquito screens)
- Double 220v AC sockets
- Television (40") on bulkhead
- Blu-ray/CD/radio surround system with two speakers and sub-woofer
- Sonos audio system
- Sensor connected to fire detection system
- Fitted carpet
- Doors to en suite and walk-in wardrobe

## **Midships VIP Walk-in Wardrobe**

---

### Midships VIP Walk-in Wardrobe

- Hanging rails
- Drawers
- Shelves
- LED overhead lighting (24v)
- AC socket
- Fitted carpet
- Door to stateroom

---

## Midships VIP En Suite

---

- Toilet
- Granite flooring
- Large washbasin
- Taps and accessories (toothbrush and glass holder, soap dispenser, towel rails and towels)
- Separate shower compartment
- Glass shower door
- Extractor fan
- Air conditioning outlet
- Mirror
- LED overhead lighting (24v)
- Opening porthole with mosquito screen and
- Venetian blind
- Shaver socket 240/110v
- Door to stateroom

---

## Aft Starboard Twin Guest Cabin

---

- Twin berths with foam mattresses
- Under-berth stowage
- 2 x reading lights 24v
- Wardrobe
- Air conditioning
- LED overhead lighting (24v)
- Panoramic window sets with round opening portlights
- (with mosquito screens)



- Double 220v AC socket
- Sensor connected to fire detection system
- Television (32")
- Blu-ray/CD/radio surround system with two speakers and
- sub-woofer
- Sonos audio system
- Fitted carpet
- Doors to en suite and lobby

## **Aft Starboard En Suite**

---

- Toilet
- Granite flooring
- Washbasin
- Taps and accessories (toothbrush and glass holder, soap dispenser, towel rails and towels)
- Separate shower compartment
- Glass shower door
- Extractor fan
- Air conditioning outlet
- Vanity unit
- LED overhead lighting (24v)
- Opening porthole with mosquito screen
- Shaver socket 240/110v
- Door to guest cabin

## **Aft Port Twin Guest Cabin**

---

- Twin berths with foam mattresses (or double)

- Under-berth stowage
- 2 x reading lights 24v
- Wardrobe
- Air conditioning
- LED overhead lighting (24v)
- Organic panoramic window sets with round opening port lights (with mosquito screens)
- Double 220v AC socket
- Sensor connected to fire detection system
- Television (32")
- Blu-ray/CD/radio surround system with two speakers
- and sub-woofer
- Sonos audio system
- Fitted carpet
- Doors to en suite and lobby

## **Aft Port Twin En Suite**

---

- Toilet
- Granite flooring
- Washbasin
- Taps and accessories (toothbrush and glass holder, soap dispenser, towel rails and towels)
- Separate shower compartment
- Glass shower door
- Extractor fan
- Air conditioning outlet
- Vanity unit

- LED overhead lighting (24v)
- Opening porthole with mosquito screen
- Shaver socket 240/110v
- Door to guest cabin

## **Aft Crew Mess**

---

- Access door from stern
- Sink with tap
- Worktop with undercounter storage
- Air conditioning
- Microwave
- Undercounter fridge
- 220v AC sockets
- Washer/dryer AC
- Telephone point
- Sensor connected to fire detection system
- LED overhead lighting (24v)
- Seating area
- Table
- Television 22"
- DVD/CD/radio with two speakers
- Cm8 monitoring system display
- Non-slip safety flooring
- Doors to crew cabins and crew toilet/shower
- Watertight door to engine room

---

## Port Crew Cabin

---

- Twin fixed Pullman bunk berths with foam mattresses
- Reading lights 24v
- Air conditioning
- Wardrobe
- LED overhead lighting (24v)
- Double 220v AC socket
- Sensor connected to fire detection system
- CD/radio with two speakers
- Fitted carpet
- Opening porthole with mosquito screen and curtains
- Door to crew mess

---

## Starboard Crew Cabin

---

- Twin fixed Pullman bunk berths with
- foam mattresses
- Reading lights 24v
- Air conditioning
- Wardrobe
- LED overhead lighting (24v)
- Double 220v AC socket
- Sensor connected to fire detection system
- CD/radio with two speakers
- Fitted carpet
- Opening porthole with mosquito screen and curtains
- Door to crew mess

---

## Crew Toilet & Shower

---

- Toilet
- Washbasin
- Shower cubicle
- Mirror
- Vanity unit
- LED overhead lighting (24v)
- Shaver socket 240/110v
- Door to crew mess

---

## Engine Compartment and Ancillaries

---

- Fuel filters/water separators to engines and generators
- Generator exhaust silencers and water separators
- Hot water tank – 200 litres 230v AC
- Engine exhaust dry risers with water injection
- Central hydraulic system providing hydraulic power for bow thruster, stern thruster (if specified),
- stabilisers (if specified)
- Chilled water air conditioning system (reverse cycle) AC
- Air intakes fitted with mist eliminator system &
- emergency shutdown flaps
- Air extraction fans 230v AC fitted with butterfly
- shutdown dampers
- Fresh water pressure set – 230v AC
- Fire hydrant system (single outlet) – 230v AC

- Bilge pumps – 24v DC (automatically operated)
- Engine driven hydraulic power pack –
- providing power steering
- Electro/hydraulic power pack – 24v DC controlling trim tabs, and bathing platform
- Fixed firefighting system – FM200 – automatic/manual
- operation with engines, generators and fans shutdown
- Fixed firefighting system – FM200 – manual operation
- Portable CO2 fire extinguisher
- Soundproofing throughout

## Electrical System

---

- 3 x 20kW @ 50Hz slowspeed generators with underwater silent exhaust and sound shield
- Generator load sharing and synchronizing system
- 100A dockside AC connection
- Voltage regulating isolation transformer
- 63A second shore supply connection
- Semi-automatic AC power distribution
- 24v DC electrical system with full circuit-breaker protection
- 8 x starter batteries 24v circuit
- 2 x generator batteries 12v circuit
- 6 x domestic batteries 24v circuit
- Independent battery back-up for VHF radio
- Automatic battery charge distribution
- Remote battery switches controlled from aft
- cockpit locker
- 2 x battery charger/inverter for 24v circuits

- 1 x battery charger/inverter for 12v circuits
- 1 x battery charger for VHF 12v System
- 1 x inverter system
- 3 x 2kW immersion heaters for calorifier
- AC sockets throughout the boat
- Class approved fire detection system with sensors in all cabins and monitoring beside main helm position
- Ethernet data network with WiFi access throughout the boat

## Underwater Gear

---

- 5-blade nickel aluminium bronze propellers
- P-brackets – AB2 nickel aluminium bronze c/w water
- lubricated bearing
- Propeller shafts – Duplex F51 – high-grade
- stainless steel
- Self-aligning shaft seal with spare seal
- High performance rudders – Nibral
- Full cathodic bonding system to zinc anodes
- Hydraulic trim tabs – stainless steel
- Anti fouling

## Systems

---

- Electric toilet system with integral macerator 230v AC
- with two-switch control
- Toilets discharging to a 435 litre black water tank

- Black water tank discharging to a shore side facility or
- by a 24v DC macerating pump directly overboard
- Fresh water stowed in an integral 1750 litre fresh water
- tank with Cm8 monitoring system
- Water pressure system 230v AC
- Hot water tank – 200 litre 230v AC
- Hot water circulating pump 220v AC
- Grey water transfer units transfer grey water into the
- 1000 litre grey water tank
- Grey water tank discharging by a 24v DC pump
- directly overboard
- Chilled water air conditioning system (reverse cycle) AC
- Each area/cabin shall have room mounted variable
- speed AU HV air handling units
- Bilge pumps – 24v DC (automatically operated)
- Fixed firefighting system – FM200 – automatic/manual
- operation with engines, generators and fans shutdown
- Fixed firefighting system – FM200 – manual operation
- Integral GRP fuel tank with two open vent lines and
- Cm8 monitoring system
- Fuel filters/water separators to engines and generators
- Central hydraulic system providing hydraulic power
- for bow thruster, stern thruster (if specified), stabilisers
- (if specified)
- Electro/hydraulic power pack – 24v DC controlling trim
- tabs, and bathing platform



- Engine driven hydraulic power pack – providing
- power steering

---

## Miscellaneous

---

- Retractable boat hook
- 6 x docking lines (6 x 15 metre, 20mm diameter, black)
- 1 x tender line (1 x 10 metre, 10mm diameter, black)
- 8 x fenders (F7, 15" x 41", white)
- 8 x fender ties (8 x 3.5 metre, 10mm diameter, black)
- Flagstaff with line
- Pennant mast with pennant flag
- Mosquito screens for openable portlights
- Small toolkit in case
- 12 x towel sets
- First aid kit
- Fire blanket
- Leather cleaning kit
- Lead lamp
- Deckwash fitting and hose reel
- Portable fire extinguishers

---

## Исключения

---

При продаже яхты исключаются личные вещи владельца.

---

## Отказ от ответственности

---

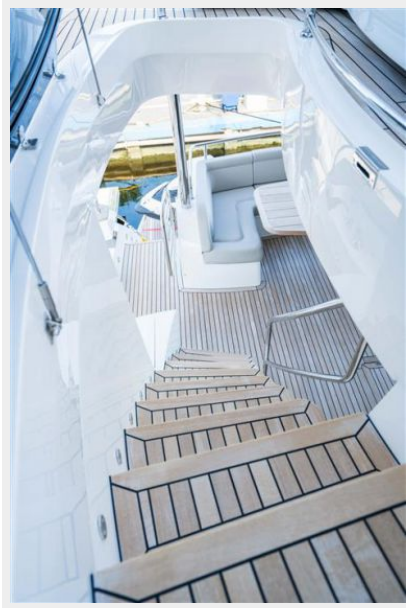
Компания предоставляет описание судна или яхты добросовестно, но не может гарантировать точность этой информации, а также не ручается за техническое

состояние. Покупатель должен проинструктировать своих агентов или оценщиков исследовать представленную информацию более подробно, по собственному желанию. Продажа судна или яхты, изменение цены или снятие с продажи будет происходить без предварительного уведомления.

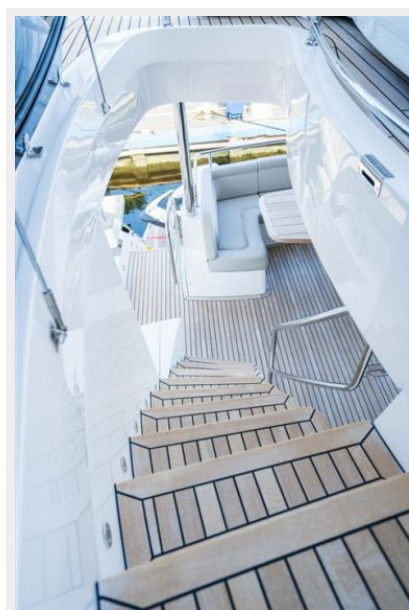
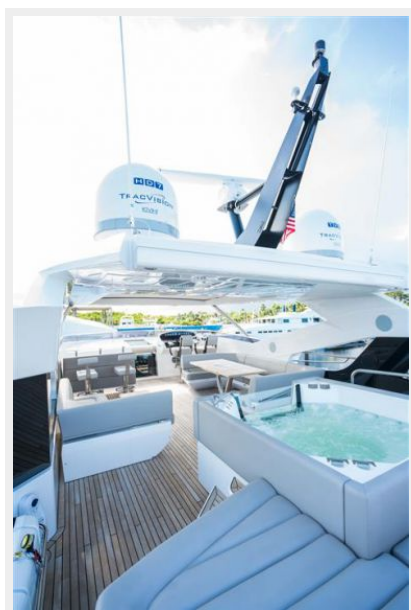
# ФОТОГРАФИИ









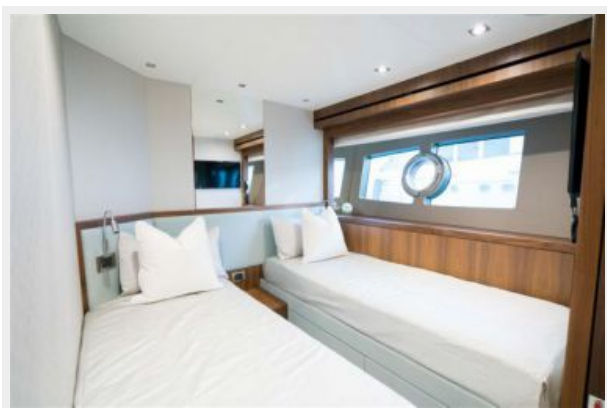
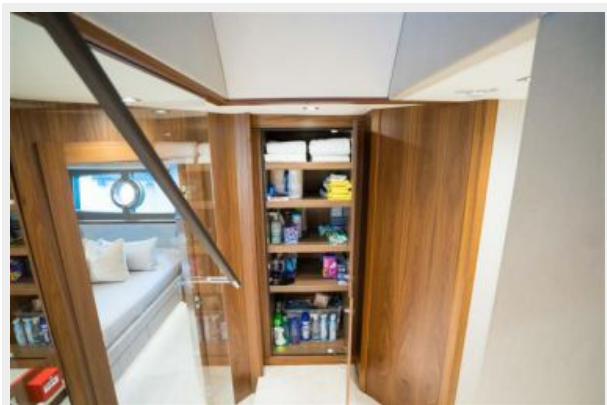


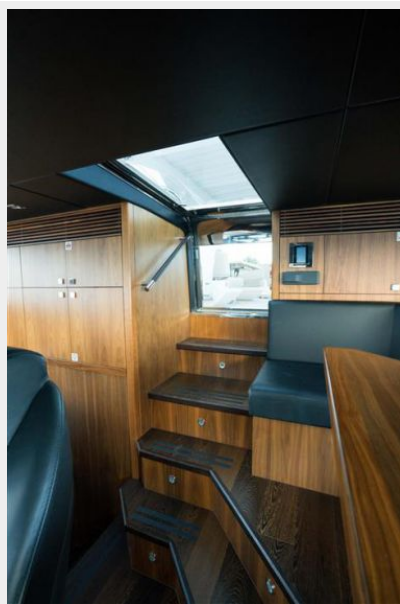
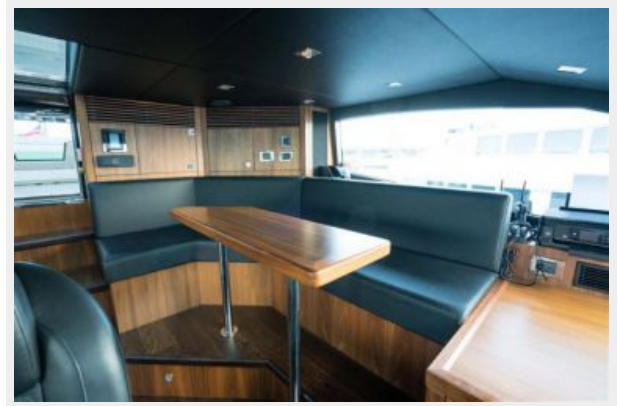


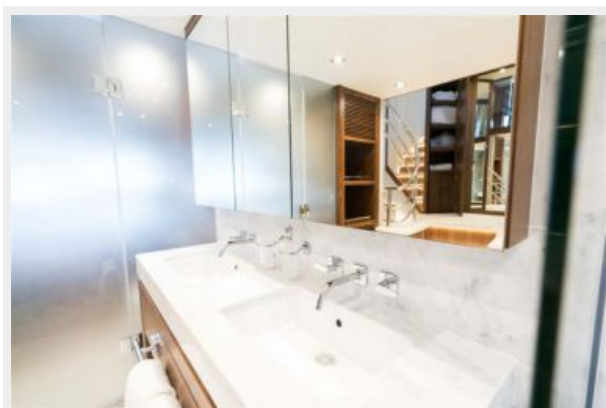






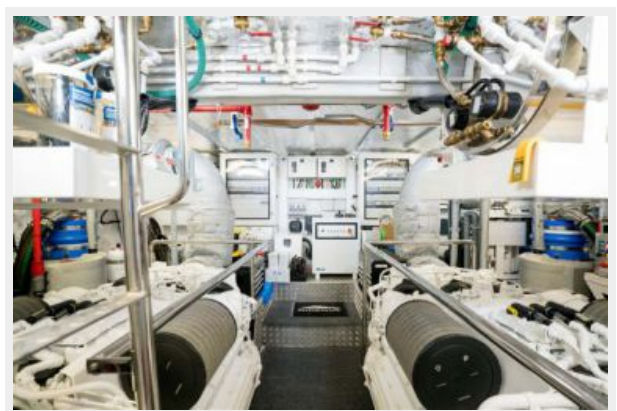
















RPM	KNOTS	GPH	RANGE	dB(A)
1000	9.2	18.0	1,458	52
1250	11.3	34.1	945	54
1500	12.4	59.2	598	56
1750	15.0	82.9	516	58
2000	18.5	126.3	418	62
2250	21.9	155.6	402	63
2450	26.0	189.1	392	65

# КОНТАКТЫ

---

Андрей Шестаков (Andrey Shestakov) – ведущий яхтенный брокер отдела продаж яхт и судов компании Shestakov Yacht Sales Inc. Официальный представитель Shestakov Yacht Sales Inc. для русскоговорящих клиентов в центральном офисе компании в Майами/Форт Лодердейл/Флорида/США.

## Контактная информация

---

Email: [andrey@shestakovyachtsales.com](mailto:andrey@shestakovyachtsales.com)

Web: [shestakovyachtsales.com](http://shestakovyachtsales.com)

## Телефоны

---

Краснодарский край: **+7(918)465-66-44**

США, Майами, Флорида: **+1(954)274-4435**

## Время работы

---

Понедельник – Суббота: **9:00 - 21:00**  
EDT

Воскресенье: **Закрето**

## Адрес

---



Harbour Towne Marina, 850 NE 3rd St,  
STE 213, Dania, FL 33004