

TARONGA — CIM SHIPYARD



Builder: CIM SHIPYARD

Year Built: 1991

Model: Sloop

Price: PRICE ON APPLICATION

Location: Thailand

LOA: 97' 6" (29.72m)

Beam: 20' 6" (6.25m)

Max Draft: 11' 0" (3.35m)

Cruise Speed: 9 Kts. (10 MPH)

Max Speed: 11 Kts. (13 MPH)

Our experienced yacht broker, Andrey Shestakov, will help you choose and buy a yacht that best suits your needs **Taronga — CIM SHIPYARD** from our catalogue. Presently, at Shestakov Yacht Sales Inc., we have a wide variety of yachts available on our sale's list. We also work in close contact with all the big yacht manufacturers from all over the world.

If you would like to buy a yacht **Taronga — CIM SHIPYARD** or would like help answering any questions concerning purchasing, selling or chartering a yacht, please call **+1(954)274-4435**

TABLE OF CONTENTS

TABLE OF CONTENTS	2
SPECIFICATIONS	3
Overview	3
Basic Information	3
Dimensions	4
Speed, Capacities and Weight	4
Accommodations	4
Hull and Deck Information	4
Engine Information	4
DETAILED INFORMATION	5
Overview	5
General Information	5
Exclusions	8
Disclaimer	8
PHOTOS	9
CONTACTS	14
Contact details	14
Telephones	14
Office hours	14
Address	14

SPECIFICATIONS

Overview

The 97-foot (29.7m) sailing yacht TARONGA is a transoceanic cruiser that boasts well-appointed, comfortable amenities. Designed by the legendary New York-based designers Sparkman and Stephens, TARONGA is number six of only 11 Maxi 88s built between 1989 and 2005 at the CIM shipyard in Rochefort, France — where she was built to Veritas classification. In 2013/2014 TARONGA underwent extensive modifications under the CIM engineers and in 2017, the yacht received an exterior and interior refit rendering her in excellent condition. The luxury sailing yacht's handcrafted interior is classic and elegant showcasing a spectacular salon with ample seating and a bar for entertaining and relaxing. TARONGA accommodates six guests in three nicely-appointed staterooms, providing a tranquil private space for guests. Her staterooms include two doubles and a spacious master suite — each is complete with its own en-suite bath. The yacht also has three cabins for its three crew members. Take in the views and feel the wind in your hair as you enjoy luxury sailing yacht TARONGA's expansive 45-square-meter covered cockpit. Showcasing two large settees, you can dine alfresco as you sail to your next port or just sit back and unwind. **Key features**

- Kept in great condition by her owner
- Comfortable sailing with good performance
- Luxurious interior that is suitable for family cruising
- Large covered cockpit with comfortable lounge area
- Hydraulic diving/tender platform
- Very economical using only 16/18 liters of diesel per hour
- Just completed a refit and presents beautifully
- Commercial galley

Basic Information

Category: Sloop

Sub Category: Sloop

Model Year: 1991

Year Built: 1991

Refit Year: 2017

Country: Thailand

Coast Guard #: Langkawi

Cockpit: Yes

Dimensions

LOA: 97' 6" (29.72m)

Beam: 20' 6" (6.25m)

Max Draft: 11' 0" (3.35m)

Speed, Capacities and Weight

Cruise Speed: 9 Kts. (10 MPH)

Max Speed: 11 Kts. (13 MPH)

Displacement: 147710 Pounds

Gross Tonnage: 102 Pounds

Water Capacity: 1040.83788488 Gallons

Fuel Capacity: 840.06712536 Gallons

Accommodations

Total Cabins: 3

Total Berths: 6

Crew Berths: 3

Hull and Deck Information

Hull Material: GRP

Deck Material: Teak

Hull Designer: Sparkman and Stephens

Exterior Designer: Sparkman and Stephens

Engine Information

Engines: 1

Manufacturer: Caterpillar

Model: CATERPILLAR 3208 435HP

DETAILED INFORMATION

Overview

Designed by the legendary New York-based designers Sparkman and Stephens, TARONGA is number six of only 11 Maxi 88s built between 1989 and 2005 at the CIM shipyard in Rochefort, France — where she was built to Veritas classification. In 2013/2014 TARONGA underwent extensive modifications under the CIM engineers and in 2017, the yacht received an exterior and interior refit rendering her in excellent condition. The luxury sailing yacht's handcrafted interior is classic and elegant showcasing a spectacular salon with ample seating and a bar for entertaining and relaxing. TARONGA accommodates six guests in three nicely-appointed staterooms, providing a tranquil private space for guests. Her staterooms include two doubles and a spacious master suite — each is complete with its own en-suite bath. The yacht also has three cabins for its three crew members. Take in the views and feel the wind in your hair as you enjoy luxury sailing yacht TARONGA's expansive 45-square-meter covered cockpit. Showcasing two large settees, you can dine alfresco as you sail to your next port or just sit back and unwind.

KEY FEATURES

- Kept in great condition by her owner
- Comfortable sailing with good performance
- Luxurious interior that is suitable for family cruising
- Large covered cockpit with functional lounge area
- Hydraulic diving/tender platform
- Very economical using only 16/18 liters of diesel per hour
- Just completed a refit and presents beautifully
- Commercial galley

General Information

MAIN CHARACTERISTICS

BUILDER: CIM SHIPYARD

DESIGNER: SPARKMAN & STEPHENS

MODEL: SPARKMAN AND STEPHENS 29.7 M

YEAR: 1991

REFITTED: 2017

CLASSIFICATION: CRUISING SAILBOAT

CONSTRUCTION: GRP

FLAG: MALAYSIA

PASSENGERS: 6

LOA: 97 FT 6 INC (29.7 M)

BEAM: 20 FT 6 INC (6.24M)

DRAFT: 11 FT (3.35 M)

ENGINE: CATERPILLAR 3208 435 HP

GENERATORS: ONAN CUMMINS 22.5KWH MKBT

DISPLACEMENT: 90 TONS CREW: 3

DIMENSIONS

LOA: 97 FT 6 INC (29.7 M)

BEAM: 20 FT 6 INC (6.24M)

DRAFT: 11 FT (3.35 M)

CAPACITIES

FUEL CAPACITY: 3,180 L

FRESH WATER CAPACITY: 3,940 L

SPEED AND RANGE DATA

MAX SPEED: 11 KNOTS

CRUISING SPEED: 9 KNOTS RANGE: 1,600 NM @ 9 KNOTS

ACCOMMODATION

CABINS

- Master cabin with ensuite bathroom & walk in wardrobe
- Guest cabin with ensuite bathroom (port)
- Guest cabin with ensuite bathroom (starboard)
- Saloon with bar and dining area (6), captains desk (navigation)
- Kitchen with crew dinette + pantry
- Crew bathroom

- 3 crew cabins with single berths

MECHANICAL EQUIPMENT

- ENGINE - Caterpillar 3208T - 435 HP - rebuilt
- GENSET (two units) - Onan Cummins 22.5kWh MKBT
- SERVICE BATTERIES - LiFePO4 (LFP) 180Ah 1.5V (8 x14) delivering 1260Ah @ 24V
- STARTER BATTERIES (3 units) - Trojan 31 AGM 111Ah - 720 CA
- CHARGER (two units) - Victron Skylla 24 i
- INVERTER (two units) - Victron Phoenix
- DESSALINATOR - HEM 25 (feedwater 16 liters per minute)
- A/C - SCS Marine CWC-3-1-S-1 TM - 108,000BTU/h
- A/C - Air handler SCS Marine 3 ways (10 unit)

GALLEY

- Commercial Grade in Stainless Steel
- Insinkerator Waste Compactor 8251
- Insinkerator Evolution 200 Food Waster Disposer
- Two doors built-in fridge (1200 liters) 24v/220v
- Two doors built-in deep freezer (1500 liters) 24v/220v
- One drop-door Deck Fridge (50 liters) 24v
- One door Bar Fridge (40 liters) 220v
- Severin 900 Microwave/Grill/Hot Air Oven (8.5 liters)
- Gaggenau EB 388 76cm Oven (110 litres)
- Two Teka Induction hob IR 321 (2 + 2 zones)
- Siemens Dishwasher
- Siemens WT34 Dryer (in lazarette)
- LG WD-MD7000 (7kg) Washing Machine (in lazarette)
- Indel Webasto Icemaker
- Silverware Cutlery + /Glassware + China set for 12 people

NAVIGATOR

- Ray e125 Hybrid Touchscreen Multifunction (Wifi/GPS/AIS/Radar)
- Ray a65 Hybrid Touchscreen Multifunction (3 Wifi repeaters in (galley/skipper desk/mastercabin)
- Ray ST 60 Multidisplay (wind/transducer/speed/water temperature)
- Ray autopilot ST6001
- Ray Smart Controller
- Furuno GP32 (skipper desk)
- Furuno Navtex NX-300
- RayMic 70 (2nd Station) (Helm station)
- Ray70 VHF Radio/GPS/AIS (Skipper desk)
- Thermal Night Vision camera T200

- Onan Genset Remote Monitors (Port/ Starboard)
- Victron BMV-700 (four units)
- Victron Color Control
- CZONE ultrasonic monitor for tanks (14 zones)
- Thrane & Thrane Sailor 250 (SAT system)
- Raymarine 60STV Satellite TV Antenna
- GSM repeater (extend signals up to 30 miles of the shoreline)
- Wifi router TP Link G4 (up to 8 computers/tablets)

ACCESSORIES AND TENDER

TENDER

- ENGINE - Yamaha Outboard 50HP - four strokes
- R.I.B - Novamarine 45 FB (RH450)

DIVING EQUIPMENTS

- Complete dive set with bottle (two)

TOYS

- Feel free single kayak (three units)
- Waterski (one set)
- Tubas/ Goggles/Fins (all sizes)

Exclusions

Owner's personal belongings.

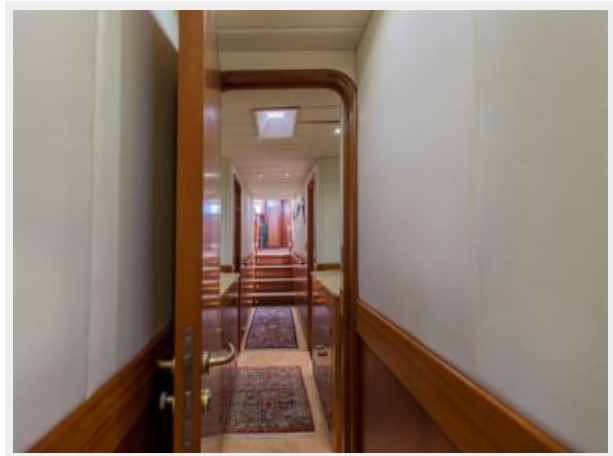
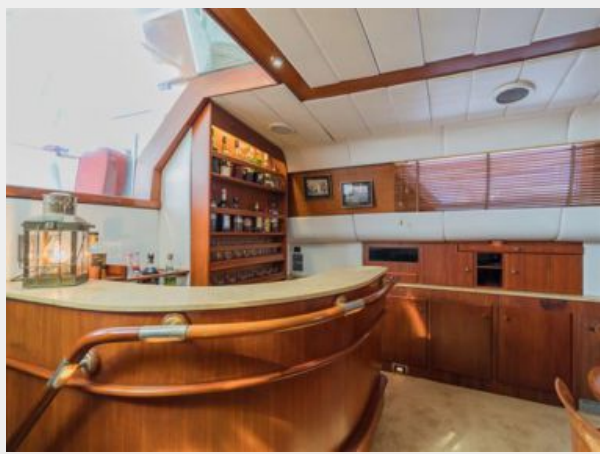
Disclaimer

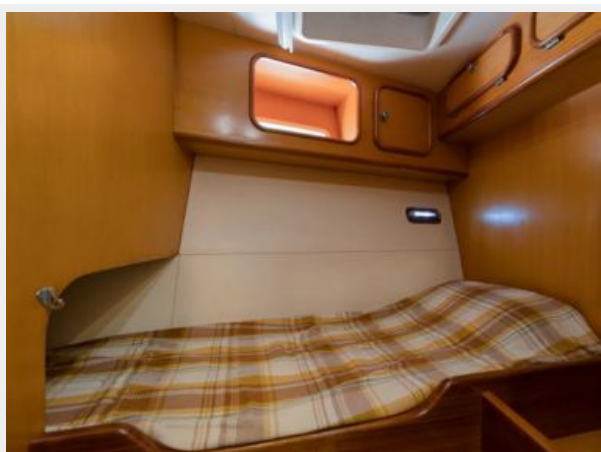
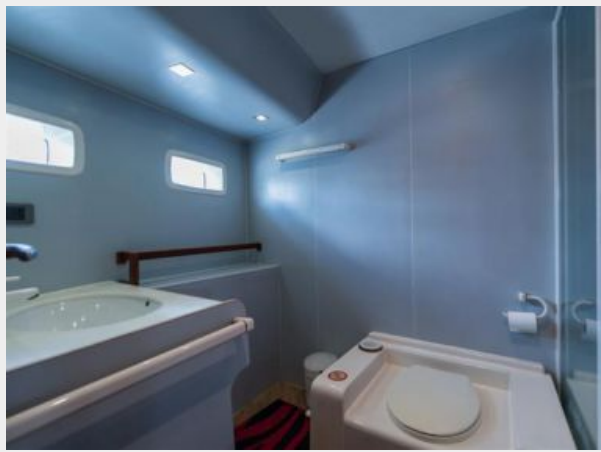
The Company offers the details of this vessel or yacht in good faith but cannot guarantee or warrant the accuracy of this information nor warrant the condition of the vessel. A buyer should instruct his representatives, agents, or his surveyors, to investigate such details as the buyer desires validated. This vessel or yacht is offered subject to prior sale, price change, or withdrawal without notice.

PHOTOS











CONTACTS

Andrey Shestakov, leading yacht broker of the sales department of Shestakov Yacht Sales Inc. Shestakov Yacht Sales Inc., the official representative of the Miami/Fort Lauderdale FL headquarters.

Contact details

Email: andrey@shestakovyachtsales.com

Web: shestakovyachtsales.com/en/

Telephones

USA: +1(954)274-4435

Office hours

Monday – Saturday: **9:00 - 21:00** EDT

Sunday: **closed**

Address



Harbour Towne Marina, 850 NE 3rd St,
STE 213, Dania, FL 33004