

## TARONGA — CIM SHIPYARD



**Судостроитель:** CIM SHIPYARD

**Год постройки:** 1991

**Модель:** Sloop

**Цена:** **ЦЕНА ЯХТЫ ПО ЗАПРОСУ**

**Местонахождение:** Thailand

**Длина общая:** 97' 6" (29.72m)

**Ширина:** 20' 6" (6.25m)

**Макс. осадка:** 11' 0" (3.35m)

**Крейс. скорость:** 9 Kts. (10 MPH)

**Макс. скорость:** 11 Kts. (13 MPH)

Купить Taronga — CIM SHIPYARD а также выбрать подходящую вам яхту из нашего каталога яхт вам поможет опытный яхтенный брокер Андрей Шестаков. На сегодняшний день компания Shestakov Yacht Sales Inc. имеет большое количество яхт в собственном списке продаж, а также тесно сотрудничает со всеми крупными яхтенными производителями по всему миру.

Для того чтобы купить яхту Taronga — CIM SHIPYARD а также проконсультироваться по любому вопросу связанному с покупкой, продажей, чартером яхт позвоните по телефону **+7(918)465-66-44**.

# ОГЛАВЛЕНИЕ

---

ОГЛАВЛЕНИЕ	2
ХАРАКТЕРИСТИКИ	3
Обзор	3
Основная информация	3
Размеры	4
Скорость, вместимость и масса	4
Размещение	4
Корпус и палуба	4
Информация о двигателе	4
ПОДРОБНОЕ ОПИСАНИЕ	5
Overview	5
General Information	5
Исключения	8
Отказ от ответственности	8
ФОТОГРАФИИ	9
КОНТАКТЫ	14
Контактная информация	14
Телефоны	14
Время работы	14
Адрес	14

# ХАРАКТЕРИСТИКИ

## Обзор

The 97-foot (29.7m) sailing yacht TARONGA is a transoceanic cruiser that boasts well-appointed, comfortable amenities. Designed by the legendary New York-based designers Sparkman and Stephens, TARONGA is number six of only 11 Maxi 88s built between 1989 and 2005 at the CIM shipyard in Rochefort, France — where she was built to Veritas classification. In 2013/2014 TARONGA underwent extensive modifications under the CIM engineers and in 2017, the yacht received an exterior and interior refit rendering her in excellent condition. The luxury sailing yacht's handcrafted interior is classic and elegant showcasing a spectacular salon with ample seating and a bar for entertaining and relaxing. TARONGA accommodates six guests in three nicely-appointed staterooms, providing a tranquil private space for guests. Her staterooms include two doubles and a spacious master suite — each is complete with its own en-suite bath. The yacht also has three cabins for its three crew members. Take in the views and feel the wind in your hair as you enjoy luxury sailing yacht TARONGA's expansive 45-square-meter covered cockpit. Showcasing two large settees, you can dine alfresco as you sail to your next port or just sit back and unwind. **Key features**

- Kept in great condition by her owner
- Comfortable sailing with good performance
- Luxurious interior that is suitable for family cruising
- Large covered cockpit with comfortable lounge area
- Hydraulic diving/tender platform
- Very economical using only 16/18 liters of diesel per hour
- Just completed a refit and presents beautifully
- Commercial galley

## Основная информация

**Тип судна:** Sloop

**Подкатегория:** Sloop

**Модельный год:** 1991

**Год постройки:** 1991

**Год обновления:** 2017

**Страна:** Thailand

**Номер регистрации в береговой охране:** Langkawi

**Кубрик:** Да

## Размеры

---

**Длина общая:** 97' 6" (29.72m)

**Ширина:** 20' 6" (6.25m)

**Макс. осадка:** 11' 0" (3.35m)

## Скорость, вместимость и масса

---

**Крейс. скорость:** 9 Kts. (10 MPH)

**Макс. скорость:** 11 Kts. (13 MPH)

**Водоизмещение:** 147710 Pounds

**Чистый вес:** 102 Pounds

**Вместимость воды:** 1040.83788488  
Gallons

**Объем топливного бака:** 840.06712536  
Gallons

## Размещение

---

**Всего кают:** 3

**Всего коек:** 6

**Койки экипажа:** 3

## Корпус и палуба

---

**Материал корпуса:** GRP

**Материал палубы:** Teak

**Дизайнер корпуса:** Sparkman and  
Stephens

**Дизайнер экстерьера:** Sparkman and  
Stephens

## Информация о двигателе

---

**Двигатели:** 1

**Производитель:** Caterpillar

**Модель:** CATERPILLAR 3208 435HP

# ПОДРОБНОЕ ОПИСАНИЕ

## Overview

Designed by the legendary New York-based designers Sparkman and Stephens, TARONGA is number six of only 11 Maxi 88s built between 1989 and 2005 at the CIM shipyard in Rochefort, France — where she was built to Veritas classification. In 2013/2014 TARONGA underwent extensive modifications under the CIM engineers and in 2017, the yacht received an exterior and interior refit rendering her in excellent condition. The luxury sailing yacht's handcrafted interior is classic and elegant showcasing a spectacular salon with ample seating and a bar for entertaining and relaxing. TARONGA accommodates six guests in three nicely-appointed staterooms, providing a tranquil private space for guests. Her staterooms include two doubles and a spacious master suite — each is complete with its own en-suite bath. The yacht also has three cabins for its three crew members. Take in the views and feel the wind in your hair as you enjoy luxury sailing yacht TARONGA's expansive 45-square-meter covered cockpit. Showcasing two large settees, you can dine alfresco as you sail to your next port or just sit back and unwind.

### KEY FEATURES

- Kept in great condition by her owner
- Comfortable sailing with good performance
- Luxurious interior that is suitable for family cruising
- Large covered cockpit with functional lounge area
- Hydraulic diving/tender platform
- Very economical using only 16/18 liters of diesel per hour
- Just completed a refit and presents beautifully
- Commercial galley

## General Information

### MAIN CHARACTERISTICS

BUILDER: CIM SHIPYARD

DESIGNER: SPARKMAN & STEPHENS

MODEL: SPARKMAN AND STEPHENS 29.7 M

YEAR: 1991

REFITTED: 2017

CLASSIFICATION: CRUISING SAILBOAT

CONSTRUCTION: GRP

FLAG: MALAYSIA

PASSENGERS: 6

LOA: 97 FT 6 INC ( 29.7 M )

BEAM: 20 FT 6 INC ( 6.24M )

DRAFT: 11 FT (3.35 M)

ENGINE: CATERPILLAR 3208 435 HP

GENERATORS: ONAN CUMMINS 22.5KWH MKBT

DISPLACEMENT: 90 TONS CREW: 3

### **DIMENSIONS**

LOA: 97 FT 6 INC (29.7 M)

BEAM: 20 FT 6 INC (6.24M)

DRAFT: 11 FT (3.35 M)

### **CAPACITIES**

FUEL CAPACITY: 3,180 L

FRESH WATER CAPACITY: 3,940 L

### **SPEED AND RANGE DATA**

MAX SPEED: 11 KNOTS

CRUISING SPEED: 9 KNOTS RANGE: 1,600 NM @ 9 KNOTS

### **ACCOMMODATION**

#### **CABINS**

- Master cabin with ensuite bathroom & walk in wardrobe
- Guest cabin with ensuite bathroom (port)
- Guest cabin with ensuite bathroom (starboard)
- Saloon with bar and dining area (6), captains desk (navigation)
- Kitchen with crew dinette + pantry
- Crew bathroom

- 3 crew cabins with single berths

## MECHANICAL EQUIPMENT

- ENGINE - Caterpillar 3208T - 435 HP - rebuilt
- GENSET (two units) - Onan Cummins 22.5kWh MKBT
- SERVICE BATTERIES - LiFePO4 (LFP) 180Ah 1.5V (8 x14) delivering 1260Ah @ 24V
- STARTER BATTERIES (3 units) - Trojan 31 AGM 111Ah - 720 CA
- CHARGER (two units) - Victron Skylla 24 i
- INVERTER (two units) - Victron Phoenix
- DESSALINATOR - HEM 25 (feedwater 16 liters per minute)
- A/C - SCS Marine CWC-3-1-S-1 TM - 108,000BTU/h
- A/C - Air handler SCS Marine 3 ways (10 unit)

## GALLEY

- Commercial Grade in Stainless Steel
- Insinkerator Waste Compactor 8251
- Insinkerator Evolution 200 Food Waster Disposer
- Two doors built-in fridge (1200 liters) 24v/220v
- Two doors built-in deep freezer (1500 liters) 24v/220v
- One drop-door Deck Fridge (50 liters) 24v
- One door Bar Fridge (40 liters) 220v
- Severin 900 Microwave/Grill/Hot Air Oven (8.5 liters)
- Gaggenau EB 388 76cm Oven (110 litres)
- Two Teka Induction hob IR 321 (2 + 2 zones)
- Siemens Dishwasher
- Siemens WT34 Dryer (in lazarette)
- LG WD-MD7000 (7kg) Washing Machine (in lazarette)
- Indel Webasto Icemaker
- Silverware Cutlery + /Glassware + China set for 12 people

## NAVIGATOR

- Ray e125 Hybrid Touchscreen Multifunction (Wifi/GPS/AIS/Radar)
- Ray a65 Hybrid Touchscreen Multifunction (3 Wifi repeaters in (galley/skipper desk/mastercabin)
- Ray ST 60 Multidisplay (wind/transducer/speed/water temperature)
- Ray autopilot ST6001
- Ray Smart Controller
- Furuno GP32 (skipper desk)
- Furuno Navtex NX-300
- RayMic 70 (2nd Station) (Helm station)
- Ray70 VHF Radio/GPS/AIS (Skipper desk)
- Thermal Night Vision camera T200

- Onan Genset Remote Monitors (Port/ Starboard)
- Victron BMV-700 (four units)
- Victron Color Control
- CZONE ultrasonic monitor for tanks (14 zones)
- Thrane & Thrane Sailor 250 (SAT system)
- Raymarine 60STV Satellite TV Antenna
- GSM repeater (extend signals up to 30 miles of the shoreline)
- Wifi router TP Link G4 (up to 8 computers/tablets)

## ACCESSORIES AND TENDER

### TENDER

- ENGINE - Yamaha Outboard 50HP - four strokes
- R.I.B - Novamarine 45 FB (RH450)

### DIVING EQUIPMENTS

- Complete dive set with bottle (two)

### TOYS

- Feel free single kayak (three units)
- Waterski (one set)
- Tubas/ Goggles/Fins (all sizes)

## Исключения

---

При продаже яхты исключаются личные вещи владельца.

## Отказ от ответственности

---

Компания предоставляет описание судна или яхты добросовестно, но не может гарантировать точность этой информации, а также не ручается за техническое состояние. Покупатель должен проинструктировать своих агентов или оценщиков исследовать представленную информацию более подробно, по собственному желанию. Продажа судна или яхты, изменение цены или снятие с продажи будет происходить без предварительного уведомления.

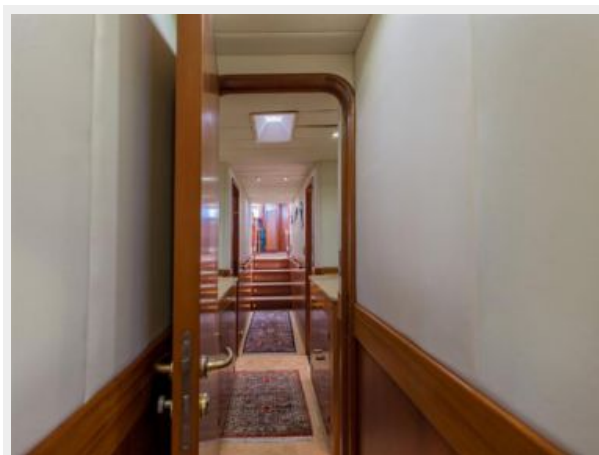
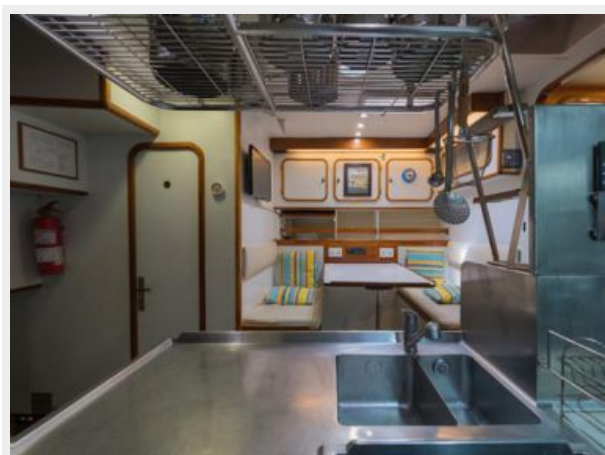


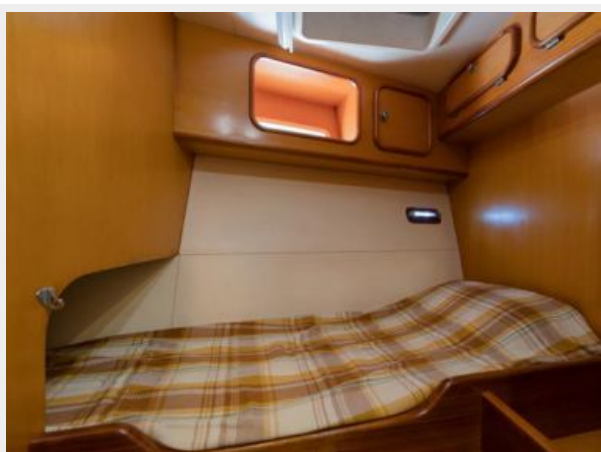
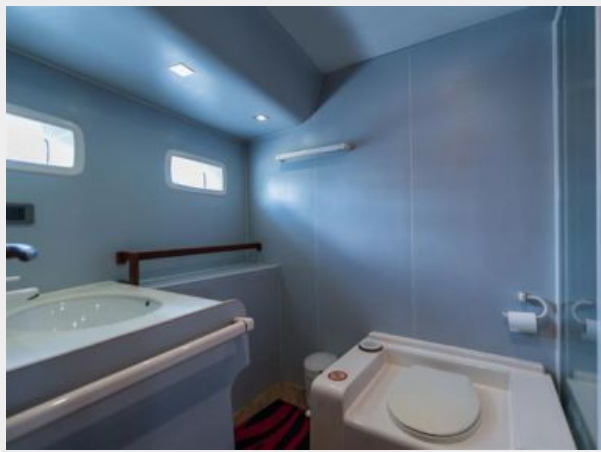
# ФОТОГРАФИИ















# КОНТАКТЫ

---

Андрей Шестаков (Andrey Shestakov) – ведущий яхтенный брокер отдела продаж яхт и судов компании Shestakov Yacht Sales Inc. Официальный представитель Shestakov Yacht Sales Inc. для русскоговорящих клиентов в центральном офисе компании в Майами/Форт Лодердейл/Флорида/США.

## Контактная информация

---

Email: [andrey@shestakovyachtsales.com](mailto:andrey@shestakovyachtsales.com)

Web: [shestakovyachtsales.com](http://shestakovyachtsales.com)

## Телефоны

---

Краснодарский край: **+7(918)465-66-44**

США, Майами, Флорида: **+1(954)274-4435**

## Время работы

---

Понедельник – Суббота: **9:00 - 21:00**  
EDT

Воскресенье: **Закрито**

## Адрес

---



Harbour Towne Marina, 850 NE 3rd St,  
STE 213, Dania, FL 33004