

INTUITION — FAIRLINE



Судостроитель: FAIRLINE

Год постройки: 2013

Модель: Моторная яхта

Цена: ЦЕНА ЯХТЫ ПО ЗАПРОСУ

Местонахождение: United States

Длина общая: 63' 7" (19.38m)

Ширина: 16' 6" (5.03m)

Купить Intuition — FAIRLINE а также выбрать подходящую вам яхту из нашего каталога яхт вам поможет опытный яхтенный брокер Андрей Шестаков. На сегодняшний день компания Shestakov Yacht Sales Inc. имеет большое количество яхт в собственном списке продаж, а также тесно сотрудничает со всеми крупными яхтенными производителями по всему миру.

Для того чтобы купить яхту Intuition — FAIRLINE а также проконсультироваться по любому вопросу связанному с покупкой, продажей, чартером яхт позвоните по телефону **+7(918)465-66-44**.

ОГЛАВЛЕНИЕ

ОГЛАВЛЕНИЕ	2
ХАРАКТЕРИСТИКИ	4
Обзор	4
Основная информация	4
Размеры	4
Скорость, вместимость и масса	4
Размещение	4
Корпус и палуба	4
Информация о двигателе	5
ПОДРОБНОЕ ОПИСАНИЕ	6
Galley	6
Companionway	6
Deck	6
Master Stateroom	7
Master Head	8
Port Cabin	8
Starboard Stateroom	8
Starboard Head	9
Garage	9
Helm Station	10
Electrical Equipment	10
Salon	11
Cockpit	11
Systems	12
Additional Information	13
Electronics	14
Исключения	14
Отказ от ответственности	14

ФОТОГРАФИИ	15
КОНТАКТЫ	22
Контактная информация	22
Телефоны	22
Время работы	22
Адрес	22

ХАРАКТЕРИСТИКИ

Обзор

Fairline Targa 62GT 2013, "Intuition", offers a sleek and sexy hull design and minimalistic interior. The sunroof offers plenty of natural light in the salon. Her oversized sun beds forward & aft make the ideal platform to enjoy a day out &/or extended cruising.

Основная информация

Тип судна: Моторная яхта

Подкатегория: Coupe

Модельный год: 2013

Год постройки: 2013

Страна: United States

Размеры

Длина общая: 63' 7" (19.38m)

Ширина: 16' 6" (5.03m)

Длина привального бруса: 62' 0"
(18.90m)

Скорость, вместимость и масса

Водоизмещение: 49200 Pounds

Вместимость воды: 145 Gallons

Объем топливного бака: 676 Gallons

Размещение

Всего кают: 3

Всего ком. состава: 2

Корпус и палуба

Материал корпуса: Fiberglass

Цвет корпуса: White

Информация о двигателе

Двигатели: 2

Производитель: Volvo

Модель: D13

Тип двигателя: Inboard

ПОДРОБНОЕ ОПИСАНИЕ

Galley

The 62's galley is forward of the saloon, down two steps, and to port. It's placement on a midlevel deck, as well as the glass bulkheads that bracket it, are another product of Fairline's ask-and-ye-shall-receive tour of the Med. This galley spans the gap. A culinarily gifted owner or guest-chef extraordinaire can fire up some chicken cordon bleu without missing a beat of the party happening in the saloon. However if a professional chef is hired, it's also out of the way enough for him to keep his head down and chop celery without being underfoot. The placement of the galley on its own level also allows it to have a full-height fridge and freezer, always a plus for anybody looking to do some adventurous cruising—or cooking.

- Combination oven/microwave/grill
- Crockery stowage
- Electric induction hob
- Extractor fan
- FAIRLINE EDITION china dinner service and cutlery set
- First aid kit
- Integrated waste bin
- Overhead lighting
- Isotherm Refrigerator/Freezer Combo
- Isotherm Ice maker
- Fresh water system: Pressurized on demand hot and cold water utilizing a "Shurflo" system with accumulator tank.
- Sink with hot and cold mixer tap
- Stowage cupboards and drawers
- Work surface lights

Companionway

- Access to electrical system
- Access to master cabin, two guest cabins and day head
- Handrail
- Large storage area under lift-up stairs
- Lighting to stair kick-plates
- Overhead lighting
- Access to Washer/Dryer combo in closet
- Access to Freezer in closet

Deck

- Anchor chain locker
- Anchor winch (electric)
- Anchor winch controls
- Bathing platform ladder
- Calibrated anchor chain
- Deck wash outlets
- Ensign and staff
- External covers to windscreen
- Fender set
- Foredeck lockers
- Full set of IMCO navigation lights
- Hot and cold water transom shower
- Moulded non-slip deck surface
- Recessed self-draining area on foredeck for coachroof sun cushions
- Remote control searchlight
- 'Reticulated' non-absorbent foam cushions for forward sundeck
- Riding light
- Self-stowing through-hull Delta® anchor
- Split windscreen
- Stainless steel aft fairlead(s)
- Stainless steel bow, spring and stern cleats
- Stainless steel bow fairlead(s)
- Stainless steel handrails
- Stainless steel pulpit
- Teak laid bathing platform
- Twin horns
- Water filler(s)
- Windscreen washers

Master Stateroom

- Aluminum venetian blinds
- Chaise longue
- Dressing table with drawers
- Feature windows with opening portholes
- Full-height standing headroom
- Full set of Heirlooms fine bed linen (includes pillows and duvet)
- Overhead lockers
- Oversized double bed
- Reading lights
- Storage locker under floor
- Twin bedside tables
- Two wardrobes with mirrored doors

- Under bed storage area with 2 large drawers
- 32" TV with Fusion RA200 marine stereo and Apple dock

Master Head

- 220V/240V shaving point
- Aluminum venetian blinds
- Automatic shower tray pump-out system
- Electric silent-flush freshwater toilet
- En suite door with feature glass
- Extractor fan
- Full set of bathroom fittings
- Mirror
- Overhead lighting
- Oversized shower in forward location with twin seats, hinged acrylic door and solid timber gratings
- Oak floor
- Stowage cupboard(s)
- Towel rail
- Towel set
- Twin 'Gullwing' opening skylights
- Vanity unit locker and basin with hot and cold pressurised water

Port Cabin

- Aluminum venetian blinds
- Bedside table with stowage
- Full length berths x2 with conversion to double bed
- Full set of Heirlooms fine bed linen (includes pillows and duvet)
- Overhead lighting
- Reading lights
- Two feature windows with opening porthole
- Wardrobe with mirrored doors

Starboard Stateroom

- Aluminum venetian blinds
- Bedside table with stowage

- Full length berths x2
- Full set of Heirlooms fine bed linen (includes pillows and duvet)
- Overhead lighting
- Reading lights
- Two feature windows with opening porthole
- Under bed storage
- Wardrobe with mirrored doors

Starboard Head

- 220V/240V shaving point
- Aluminum venetian blinds
- Automatic shower tray pump-out system
- Day Access
- Electric silent-flush freshwater toilet
- Extractor fan
- Full set of bathroom fittings
- Full standing height shower with solid timber gratings and hinged glass door
- Overhead lockers
- Mirror
- Opening porthole
- Overhead ceiling lights
- Oak floor
- Skylights
- Towel rail
- Vanity unit locker and basin with hot and cold pressurised water

Garage

- Tender
- Large sun pad to garage roof
- Electric winch with remote control
- Hydraulically powered access door
- Dingy launch mechanism
- Fire extinguisher system
- Light

Helm Station

- 12V socket
- Adjustable/tilt steering wheel
- Adjustable air vents
- Bilge pump switches with integral operating warning lights and audible alarms
- Bow thruster controls
- Chart stowage
- Chart table and light
- Companion seating to helm
- Controls for engine bay fire extinguisher system
- Drinks holders
- Electronic single-lever throttle and gear controls for port and starboard engines
- Fuel gauges
- Full engine instrumentation including; tachometers, temperature gauges, audible alarms and engine hour meters
- Garmin autopilot system with colour display
- Garmin digital multi-function instrument system with colour display
- Garmin GPS map (12") Display
- Garmin VHF marine radio
- Helm position indicator
- High speed magnetic compass
- Powered steering
- Red night-light illumination to helm
- Remote anchor winch controls
- Searchlight controls
- Switches for navigation and riding lights, windscreen wipers and engine bay extractor fans
- Trim tab controls
- Twin bench seat to helm

Electrical Equipment

- 230 - 240V 50Hz
- All 240V, 24V and 12V circuits (where applicable) protected by circuit breakers with main electrical load control panel
- Emergency VHF radio - 12V power supply
- Heavy duty circuit breakers
- Isolating switches to all batteries
- Onan generator 9.5kW

12 Volt

- Voltage dropper from domestic batteries

24 Volt

- Batteries - 2 x heavy duty batteries exclusively for port engine starting
- Batteries - 2 x heavy duty batteries exclusively for starboard engine starting
- Batteries - 4 x heavy duty batteries wired in parallel supplying domestic services and port engine starting
- Circuit breaker 100amp for anchor winch
- Emergency battery coupling system permits each engine to start from opposite battery bank
- Regulated charger

240 Volt

- Isolation transformer(s)
- Polarity check and earth leakage protection system
- Power points throughout the boat (fed from shore power or generator)
- Shore power supply
- Spare circuit breakers for optional equipment

Salon

- Sideboard to Port with 32" TV with Apple dock
- Harman Kardon AV system with DVD player
- Dining table with lift mechanism to convert to coffee table
- Hardtop skylight and overhead lighting
- Pneumatically sealed retractable powered hard top
- Oak floor
- Three panel patio door to cockpit with pleated blinds
- Sofa with stowage
- Manual sliding windows

Cockpit

Forward of the sunpad, the cockpit is appointed with everything you'd want for a cruising boat like this. There's U-shaped seating around a table that's just begging to be set with a plate of oysters and a nicely chilled Moscato. And to port there's a barbecue, sink, ice maker, and refrigerator, all of which are options. Overhead, there's one of those design details I mentioned; an electrically actuated sunshade that can jut out over the whole area. That may seem fairly commonplace, but the real trick here is that this one can be deployed while at speed. Many times cockpit sunshades aren't built sturdily enough to take on the bouncing waves, but this one most certainly is.

- 12V heavy duty weatherproof socket

- Access to side deck
- Aft cockpit hood with clear panels and zipped doorway
- Bathing platform lights
- Boat hook
- Engine bay access hatch with stainless steel gas struts
- Teak cockpit table
- Life raft stowage
- Manual bilge pumps
- Mooring warps
- Overhead lighting
- Stowage locker
- Teak laid floor throughout self-draining cockpit
- Single transom gate
- Cockpit bar pack including refrigerator, griddle, and ice maker

Systems

Fuel System

- Changeover valve system to permit each engine to draw fuel from, and return fuel to, either tank
- Emergency fuel shut-off valves accessible via cable-operated remote control
- High capacity water separators and fuel filters
- Individual fillers and vents to port and starboard
- x2 fuel tanks, 1,279L each

Freshwater System

- Automatic, pressurised supply
- Calorifier hot water system
- Water tank(s)
-

Additional Information

- Stainless Steel Safety Grab Rails Throughout
- "Side-Power" 24-Volt Bow and Stern Thruster
- Electro-Hydraulic Full length Teak/Fiberglass Swim Platform
- Electrically Retractable Aft Deck Sun Shade
- Fresh Water Wash Down
- Three Step Stainless Steel Transom Ladder
- Hanging Lockers
- Engine Room Lights
- Cabin Courtesy LED Lights
- Cockpit LED Lights
- Engine Compartment Wash Down
- 32" Samsung Flat Screen TV
- 40" Samsung Flat Screen TV
- (2) 21" Phillips Flat Screen TV
- (2) Fusion DVD/Stereo Receivers
- Harmon Kardon Surround Sound Stereo System
- Roque WiFi Booster System
- Electrically Operated Port and Starboard Main Salon Port Lights/Windows
- Gen-Set Sound Shielding
- Powder Coated Sea-View Antenna Mast
- Meile Touch-tronic Washer and Dryer
- Teak Cockpit Sole
- Chain Plate
- Engine Room Blowers
- Transom Shower
- Low Speed Trolling Valves
- Fresh Water Tank Level Indicator
- Galley Vent Fan
- Sharp Microwave Oven
- Powered Head Vent
- Fisher & Paykel Dishwasher Drawer
- Electronic Rudder Indicator
- Vessel Wired for TV and Telephone
- Cockpit Wet Bar
- Electro-Hydraulic Operated Dingy Garage with Electric Winch
- (2) 50 AMP Glendenning Cable Master
- Zantrex 1800 Watt Sine Wave Inverter
- Horizon Reverse Osmosis System
- Fresh Water Carbon Filter System
- Recessed Anchor Locker
- Recessed Anchor
- Foredeck Sun Cushions

- Emergency Starting System
- Extensive Spare Parts Inventory on Board
- New Aft Sun Cushions
- Custom Powered Sun Blinds
- Spare
- HRO Water Maker System
- New Aft Settee Cushions
- Triple Smoked Slider Salon Doors
- Aft Deck Seating Covers
- (3) Sets Windshield Covers
- CDA Electric Grill with Lid and Safety
- (4) Lumishore Elite LED Under Water Lights

Electronics

- Tracvision M5 Satellite TV antes system w/control panel
- Seaview PMA-5G Power mount plus 5" w/plate for SAT dome
- Direct TV Receiver HD Satellite receiver & card
- KVH 4X8 Active multi-switch for Direct TV up to 8 receivers
- Linksys wireless router system w/ethernet cables
- High Performance WiFi receiver and extender

Исключения

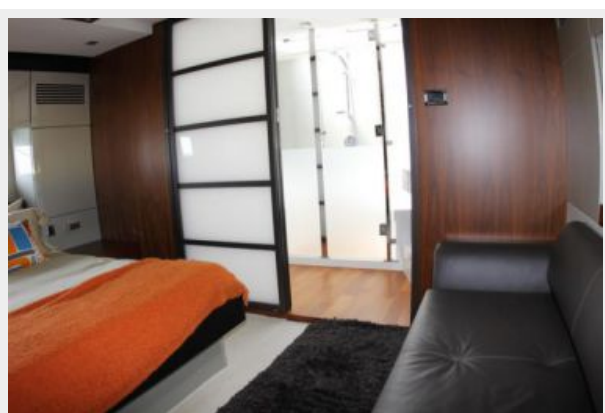
При продаже яхты исключаются личные вещи владельца.

Отказ от ответственности

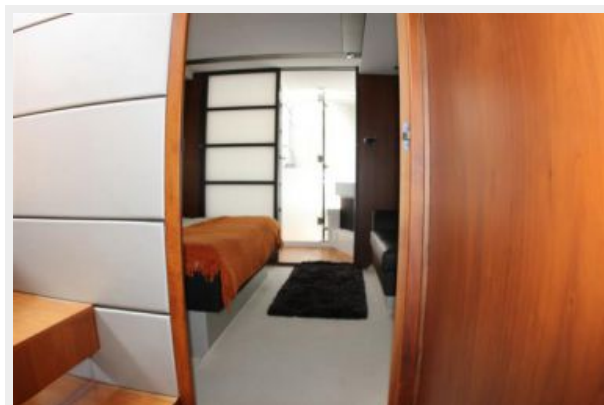
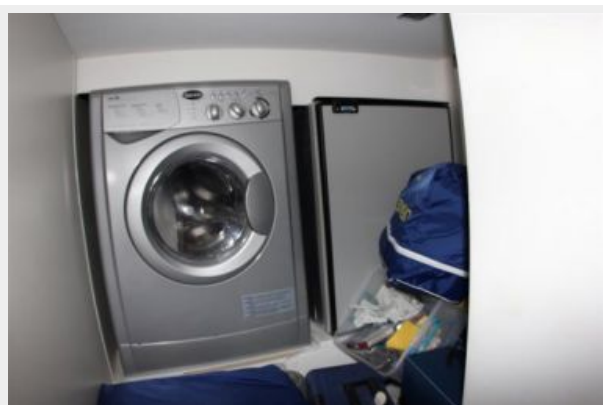
Компания предоставляет описание судна или яхты добросовестно, но не может гарантировать точность этой информации, а также не ручается за техническое состояние. Покупатель должен проинструктировать своих агентов или оценщиков исследовать представленную информацию более подробно, по собственному желанию. Продажа судна или яхты, изменение цены или снятие с продажи будет происходить без предварительного уведомления.

ФОТОГРАФИИ















КОНТАКТЫ

Андрей Шестаков (Andrey Shestakov) – ведущий яхтенный брокер отдела продаж яхт и судов компании Shestakov Yacht Sales Inc. Официальный представитель Shestakov Yacht Sales Inc. для русскоговорящих клиентов в центральном офисе компании в Майами/Форт Лодердейл/Флорида/США.

Контактная информация

Email: andrey@shestakovyachtsales.com

Web: shestakovyachtsales.com

Телефоны

Краснодарский край: **+7(918)465-66-44**

США, Майами, Флорида: **+1(954)274-4435**

Время работы

Понедельник – Суббота: **9:00 - 21:00**
EDT

Воскресенье: **Закрито**

Адрес



Harbour Towne Marina, 850 NE 3rd St,
STE 213, Dania, FL 33004