

PUFFY — OY NAUTOR AB



Builder: OY NAUTOR AB

Year Built: 2012

Model: Cruising/Racing Sailboat

Price: PRICE ON APPLICATION

Location: United States

LOA: 54' 1" (16.48m)

Beam: 0' 0" (0.00m)

Min Draft: 4' 8" (1.40m)

Max Draft: 12' 2" (3.70m)

Our experienced yacht broker, Andrey Shestakov, will help you choose and buy a yacht that best suits your needs **PUFFY — OY NAUTOR AB** from our catalogue. Presently, at Shestakov Yacht Sales Inc., we have a wide variety of yachts available on our sale's list. We also work in close contact with all the big yacht manufacturers from all over the world.

If you would like to buy a yacht **PUFFY — OY NAUTOR AB** or would like help answering any questions concerning purchasing, selling or chartering a yacht, please call **+1(954)274-4435**

TABLE OF CONTENTS

TABLE OF CONTENTS	2
SPECIFICATIONS	3
Overview	3
Basic Information	3
Dimensions	3
Speed, Capacities and Weight	3
Accommodations	3
Hull and Deck Information	3
Engine Information	4
DETAILED INFORMATION	5
Detailed information	5
Exclusions	10
Disclaimer	10
PHOTOS	11
CONTACTS	14
Contact details	14
Telephones	14
Office hours	14
Address	14

SPECIFICATIONS

Overview

Puffy is a fantastic example of the Swan 53. It has been specified with only the very best of everything available and has some very tasteful custom touches. Since New the boat has been professionally maintained and has wanted for nothing. Every year the mast has been taken apart for maintenance and re-built. The centerboard has also been removed and serviced.

Basic Information

Category: Cruising/Racing Sailboat

Model Year: 2009

Year Built: 2012

Country: United States

Dimensions

LOA: 54' 1" (16.48m)

Beam: 0' 0" (0.00m)

Min Draft: 4' 8" (1.40m)

Max Draft: 12' 2" (3.70m)

Speed, Capacities and Weight

Displacement: 57320.18812 Pounds

Water Capacity: 180.693683568 Gallons

Fuel Capacity: 125.4817247 Gallons

Accommodations

Total Cabins: 4

Hull and Deck Information

Hull Material: GRP

Hull Color: Blue With White stripes

Engine Information

Engines: 1

Manufacturer: Yanmar

DETAILED INFORMATION

Detailed information

Puffy is a fantastic example of the Swan 53. It has been specified with only the very best of everything available and has some very tasteful custom touches. Since New the boat has been professionally maintained and has wanted for nothing. Every year the mast has been taken apart for maintenance and re-built. The centerboard has also been removed and serviced.

HULL

The hull is of single skin construction using glassfibre reinforced isopolyester laminate with vinylester skincoat. Multiaxial or unidirectional fibres in selected areas. All stiffeners are unidirectional glass layups. Stringers and web frames are pre-made hollow sections that allow them to be used for ventilation purposes or as cable conduits. Engine bed is of GRP with steel inserts. Special care is taken to assure rigid foundation and proper adhesion to hull. Structural bulkheads are marine plywood with GRP reinforcements. They are laminated to hull and deck

KEEL

The keel is a lead casting with antimony and carefully finished to accurate shape. Cast-in keel bolts are of high-tensile stainless steel.

DECK

Scantlings, materials and workmanship throughout are consistent with the construction of a light deck without sacrificing strength or stiffness. Deck is of sandwich construction, using multiaxial glass fibre reinforced isopolyester laminate, with low-density closed cell foam core, and is bonded to the hull. High-density core or solid laminate under deck fittings. Unteaked deck surfaces has a white gelcoat finish. Teak in cockpit and side decks

30 mm high toe rails forward of mast

Carbon steering wheels

Main companionway sliding hatch garage flush with coach roof and Esthec details.

2 pcs footsteps in cockpit

Steering pedestals with 9in chart plotters built in

Stainless steel pushpit, pulpit and stanchions

610 mm high life lines

Composite mast collar

Grab rails each side of companionway

Headstay attachment on stemhead

Folding eyes for harness attachment in cockpit

Pad eyes for safety lines, Wichard 6504, 3 pcs

Pad eye for outboard sheeting, Wichard 6505

Harken aluminum jib sheet tracks

Two separate lockers to be mounted in cockpit for cruising.

Harken blocks

Spinlock jammers

Anchor windlass

Lewmar V4, 24 V windlass with gypsy only for 10 mm Lewmar Grade 40 chain and one remote control in the bow locker.

WINCHES

Winches are Harken

Primary sheet B70/2 STR Electric

Halyard B60/2 STR Electric.

Mainsheet B60/2 STR Electric.

INTERIOR – 4 CABINS

Visible saloon interior is varnished teak with hand rubbed satin finish. Floorboards of sandwich construction laid with teak and oak veneer. Lightweight overhead lining foam mattresses over Scandi-flex battens for racing. Air-conditioning and reverse cycle heating, in every cabin

OWNER CABIN

Island Double berth with stowage under

2 X Hanging lockers and

Make-up desk with chair

OWNER'S HEAD

Fresh/salt electric flush head White GRP interior module to half height with wash basin

Fresh water tap, shower, mirror and waste container Separate Shower stall

GUEST CABIN, MID-SHIPS

Queen Sized bed with ample storage under, reading lights 2 X opening hatches, hanging locker, full standing headroom. This cabin is a fantastic extra that is not available in any other boats of this size and style.

GALLEY

Protected space for a Force 10, 3-burner gimballed LPG stove, with oven protected by stainless steel guard

One front loaded refrigerator, 142 l (5.0 cu.ft)

One top loaded freezer, 63 l (2.2 cu.ft)

Waste bin under sink

To get bigger working space, two Corian pieces can be placed on top of the stove.

Custom storage for cutlery and crockery.

MAIN CABIN

Port side has a custom Hi/Low electric table with cushion in-fills. All cushions are covered with "ultra suede" and have fitted "crew covers" There are two additional chairs with retaining pins for use while sailing.

NAVIGATION STATION

TV that doubles as a chart plotter, two built in chairs with a center chart table. Bose sound system

and Samsung 21 inch TV and Blur-Ray player. Ample storage for charts etc...

GUEST/DAY HEAD

Fresh/salt electric flush head, White GRP interior module to half height with wash basin

Fresh water tap, shower, mirror and waste container Deep wet gear hanging locker

PORT AFT CABIN

Double berth, opening port-lights, reading lights and hanging locker, additional lockers above the bunk and storage under it.

Starboard AFT CABIN

Single berth, opening port-lights, reading lights and hanging locker,

Stowage under berth and vast lockers on centerline.

ENGINE, THRUSTER +GENERATOR

The engine is a Yanmar 4 JH4-HTE, with ZF25A gear and a 3-bladed folding propeller. Engine and reduction gear are supported on flexible mounts. Fire suppression system with trigger in the cockpit. Fire-extinguisher under the steps entrance.

Bowthruster, Max-Power R200/8, hydraulic, swing type, driven by a DC power pack and four Optima batteries, charged by 25A charger or splitter on service alternator, with control buttons on deck, aft of starboard steering wheel.

Diesel generator, Fischer Panda 9000 ND PMS 7.7 kW, 9.1 kVA, 230 V 50 Hz. The unit is mounted on elastic seating inside proprietary sound shields. Maximum permissible heel angle is 25° left or right and 20° forward or aft.

INSTRUMENTS

2 X B&G Zeus plotters at the helm, fully integrated

2 X compass D- 135, mounted on steering pedestal

B&G H3000 navigation instruments,

Full Race/Performance package with

4 x 20/20's on mast

3 GFDs in cockpit

B&G Autopilot

B&G 4 G radar

VHF

AIS

RIGGING

Offshore Spars Carbon fibre double spreader 15/16 fractional rig, swept 20 degrees painted white

Offshore Spars Carbon fibre main boom with electric furling

Offshore Spars Carbon fiber small removable bow-sprit

Navtec rod rigging with discontinuous shrouds

Hydraulic Vang Hydraulic backstay adjustment,

Removable power-pack hydraulic mast jack

Forestay with harken furler

Navtec system 50 Panel with electric pump

COCKPIT

Removable cockpit cushions, cushions for sunbathing pad forward of the companionway. Full dodger that folds into trough. Forward and aft "sailing", folding biminis. Awning from mast to aft end of cockpit. Full covers for winches, table, binnacles and wheels, additional full set "transport/storage" covers

SAILS :

North 3Di carbon with taffeta.

2012 mainsail

2012 + 2016 roller furling jib North

2012 A 3 with sock North

2014 A 2 for racing North

2015 A 2 for racing Quantum (1 regatta)

2017 cruising Code Zero on a furler (unused)

Exclusions

Owner's personal belongings.

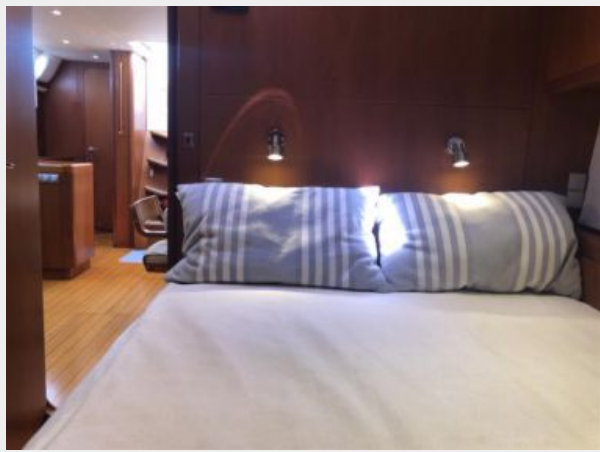
Disclaimer

The Company offers the details of this vessel or yacht in good faith but cannot guarantee or warrant the accuracy of this information nor warrant the condition of the vessel. A buyer should instruct his representatives, agents, or his surveyors, to investigate such details as the buyer desires validated. This vessel or yacht is offered subject to prior sale, price change, or withdrawal without notice.

PHOTOS







CONTACTS

Andrey Shestakov, leading yacht broker of the sales department of Shestakov Yacht Sales Inc. Shestakov Yacht Sales Inc., the official representative of the Miami/Fort Lauderdale FL headquarters.

Contact details

Email: andrey@shestakovyachtsales.com

Web: shestakovyachtsales.com/en/

Telephones

USA: +1(954)274-4435

Office hours

Monday – Saturday: **9:00 - 21:00** EDT

Sunday: **closed**

Address



Harbour Towne Marina, 850 NE 3rd St,
STE 213, Dania, FL 33004