

PUFFY — OY NAUTOR AB



Судостроитель: OY NAUTOR AB

Год постройки: 2012

Модель: Cruising/Racing Sailboat

Цена: **ЦЕНА ЯХТЫ ПО ЗАПРОСУ**

Местонахождение: United States

Длина общая: 54' 1" (16.48m)

Ширина: 0' 0" (0.00m)

Мин. осадка: 4' 8" (1.40m)

Макс. осадка: 12' 2" (3.70m)

Купить **PUFFY — OY NAUTOR AB** а также выбрать подходящую вам яхту из нашего каталога яхт вам поможет опытный яхтенный брокер Андрей Шестаков. На сегодняшний день компания **Shestakov Yacht Sales Inc.** имеет большое количество яхт в собственном списке продаж, а также тесно сотрудничает со всеми крупными яхтенными производителями по всему миру.

Для того чтобы купить яхту **PUFFY — OY NAUTOR AB** а также проконсультироваться по любому вопросу связанному с покупкой, продажей, чартером яхт позвоните по телефону **+7(918)465-66-44**.

ОГЛАВЛЕНИЕ

ОГЛАВЛЕНИЕ	2
ХАРАКТЕРИСТИКИ	3
Обзор	3
Основная информация	3
Размеры	3
Скорость, вместимость и масса	3
Размещение	3
Корпус и палуба	4
Информация о двигателе	4
ПОДРОБНОЕ ОПИСАНИЕ	5
Detailed information	5
Исключения	10
Отказ от ответственности	10
ФОТОГРАФИИ	11
КОНТАКТЫ	14
Контактная информация	14
Телефоны	14
Время работы	14
Адрес	14

ХАРАКТЕРИСТИКИ

Обзор

Puffy is a fantastic example of the Swan 53. It has been specified with only the very best of everything available and has some very tasteful custom touches. Since New the boat has been professionally maintained and has wanted for nothing. Every year the mast has been taken apart for maintenance and re-built. The centerboard has also been removed and serviced.

Основная информация

Тип судна: Cruising/Racing Sailboat	Модельный год: 2009
Год постройки: 2012	Страна: United States

Размеры

Длина общая: 54' 1" (16.48m)	Ширина: 0' 0" (0.00m)
Мин. осадка: 4' 8" (1.40m)	Макс. осадка: 12' 2" (3.70m)

Скорость, вместимость и масса

Водоизмещение: 57320.18812 Pounds	Вместимость воды: 180.693683568 Gallons
Объем топливного бака: 125.4817247 Gallons	

Размещение

Всего кают: 4

Корпус и палуба

Материал корпуса: GRP

Цвет корпуса: Blue With White stripes

Информация о двигателе

Двигатели: 1

Производитель: Yanmar

ПОДРОБНОЕ ОПИСАНИЕ

Detailed information

Puffy is a fantastic example of the Swan 53. It has been specified with only the very best of everything available and has some very tasteful custom touches. Since New the boat has been professionally maintained and has wanted for nothing. Every year the mast has been taken apart for maintenance and re-built. The centerboard has also been removed and serviced.

HULL

The hull is of single skin construction using glassfibre reinforced isopolyester laminate with vinylester skincoat. Multiaxial or unidirectional fibres in selected areas. All stiffeners are unidirectional glass layups. Stringers and web frames are pre-made hollow sections that allow them to be used for ventilation purposes or as cable conduits. Engine bed is of GRP with steel inserts. Special care is taken to assure rigid foundation and proper adhesion to hull. Structural bulkheads are marine plywood with GRP reinforcements. They are laminated to hull and deck

KEEL

The keel is a lead casting with antimony and carefully finished to accurate shape. Cast-in keel bolts are of high-tensile stainless steel.

DECK

Scantlings, materials and workmanship throughout are consistent with the construction of a light deck without sacrificing strength or stiffness. Deck is of sandwich construction, using multiaxial glass fibre reinforced isopolyester laminate, with low-density closed cell foam core, and is bonded to the hull. High-density core or solid laminate under deck fittings. Unteaked deck surfaces has a white gelcoat finish. Teak in cockpit and side decks

30 mm high toe rails forward of mast

Carbon steering wheels

Main companionway sliding hatch garage flush with coach roof and Esthec details.

2 pcs footsteps in cockpit

Steering pedestals with 9in chart plotters built in

Stainless steel pushpit, pulpit and stanchions

610 mm high life lines

Composite mast collar

Grab rails each side of companionway

Headstay attachment on stemhead

Folding eyes for harness attachment in cockpit

Pad eyes for safety lines, Wichard 6504, 3 pcs

Pad eye for outboard sheeting, Wichard 6505

Harken aluminum jib sheet tracks

Two separate lockers to be mounted in cockpit for cruising.

Harken blocks

Spinlock jammers

Anchor windlass

Lewmar V4, 24 V windlass with gypsy only for 10 mm Lewmar Grade 40 chain and one remote control in the bow locker.

WINCHES

Winches are Harken

Primary sheet B70/2 STR Electric

Halyard B60/2 STR Electric.

Mainsheet B60/2 STR Electric.

INTERIOR – 4 CABINS

Visible saloon interior is varnished teak with hand rubbed satin finish. Floorboards of sandwich construction laid with teak and oak veneer. Lightweight overhead lining foam mattresses over Scandi-flex battens for racing. Air-conditioning and reverse cycle heating, in every cabin

OWNER CABIN

Island Double berth with stowage under

2 X Hanging lockers and

Make-up desk with chair

OWNER'S HEAD

Fresh/salt electric flush head White GRP interior module to half height with wash basin

Fresh water tap, shower, mirror and waste container Separate Shower stall

GUEST CABIN, MID-SHIPS

Queen Sized bed with ample storage under, reading lights 2 X opening hatches, hanging locker, full standing headroom. This cabin is a fantastic extra that is not available in any other boats of this size and style.

GALLEY

Protected space for a Force 10, 3-burner gimballed LPG stove, with oven protected by stainless steel guard

One front loaded refrigerator, 142 l (5.0 cu.ft)

One top loaded freezer, 63 l (2.2 cu.ft)

Waste bin under sink

To get bigger working space, two Corian pieces can be placed on top of the stove.

Custom storage for cutlery and crockery.

MAIN CABIN

Port side has a custom Hi/Low electric table with cushion in-fills. All cushions are covered with "ultra suede" and have fitted "crew covers" There are two additional chairs with retaining pins for use while sailing.

NAVIGATION STATION

TV that doubles as a chart plotter, two built in chairs with a center chart table. Bose sound system

and Samsung 21 inch TV and Blur-Ray player. Ample storage for charts etc...

GUEST/DAY HEAD

Fresh/salt electric flush head, White GRP interior module to half height with wash basin

Fresh water tap, shower, mirror and waste container Deep wet gear hanging locker

PORT AFT CABIN

Double berth, opening port-lights, reading lights and hanging locker, additional lockers above the bunk and storage under it.

Starboard AFT CABIN

Single berth, opening port-lights, reading lights and hanging locker,

Stowage under berth and vast lockers on centerline.

ENGINE, THRUSTER +GENERATOR

The engine is a Yanmar 4 JH4-HTE, with ZF25A gear and a 3-bladed folding propeller. Engine and reduction gear are supported on flexible mounts. Fire suppression system with trigger in the cockpit. Fire-extinguisher under the steps entrance.

Bowthruster, Max-Power R200/8, hydraulic, swing type, driven by a DC power pack and four Optima batteries, charged by 25A charger or splitter on service alternator, with control buttons on deck, aft of starboard steering wheel.

Diesel generator, Fischer Panda 9000 ND PMS 7.7 kW, 9.1 kVA, 230 V 50 Hz. The unit is mounted on elastic seating inside proprietary sound shields. Maximum permissible heel angle is 25° left or right and 20° forward or aft.

INSTRUMENTS

2 X B&G Zeus plotters at the helm, fully integrated

2 X compass D- 135, mounted on steering pedestal

B&G H3000 navigation instruments,

Full Race/Performance package with

4 x 20/20's on mast

3 GFDs in cockpit

B&G Autopilot

B&G 4 G radar

VHF

AIS

RIGGING

Offshore Spars Carbon fibre double spreader 15/16 fractional rig, swept 20 degrees painted white

Offshore Spars Carbon fibre main boom with electric furling

Offshore Spars Carbon fiber small removable bow-sprit

Navtec rod rigging with discontinuous shrouds

Hydraulic Vang Hydraulic backstay adjustment,

Removable power-pack hydraulic mast jack

Forestay with harken furler

Navtec system 50 Panel with electric pump

COCKPIT

Removable cockpit cushions, cushions for sunbathing pad forward of the companionway. Full dodger that folds into trough. Forward and aft "sailing", folding biminis. Awning from mast to aft end of cockpit. Full covers for winches, table, binnacles and wheels, additional full set "transport/storage" covers

SAILS :

North 3Di carbon with taffeta.

2012 mainsail

2012 + 2016 roller furling jib North

2012 A 3 with sock North

2014 A 2 for racing North

2015 A 2 for racing Quantum (1 regatta)

2017 cruising Code Zero on a furler (unused)

Исключения

При продаже яхты исключаются личные вещи владельца.

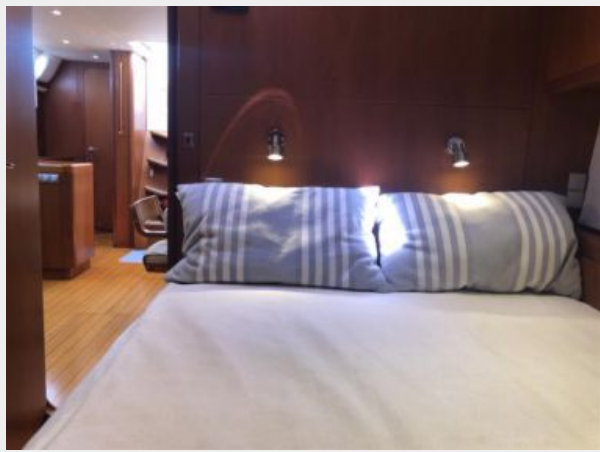
Отказ от ответственности

Компания предоставляет описание судна или яхты добросовестно, но не может гарантировать точность этой информации, а также не ручается за техническое состояние. Покупатель должен проинструктировать своих агентов или оценщиков исследовать представленную информацию более подробно, по собственному желанию. Продажа судна или яхты, изменение цены или снятие с продажи будет происходить без предварительного уведомления.

ФОТОГРАФИИ







КОНТАКТЫ

Андрей Шестаков (Andrey Shestakov) – ведущий яхтенный брокер отдела продаж яхт и судов компании Shestakov Yacht Sales Inc. Официальный представитель Shestakov Yacht Sales Inc. для русскоговорящих клиентов в центральном офисе компании в Майами/Форт Лодердейл/Флорида/США.

Контактная информация

Email: andrey@shestakovyachtsales.com

Web: shestakovyachtsales.com

Телефоны

Краснодарский край: **+7(918)465-66-44**

США, Майами, Флорида: **+1(954)274-4435**

Время работы

Понедельник – Суббота: **9:00 - 21:00**
EDT

Воскресенье: **Закрито**

Адрес



Harbour Towne Marina, 850 NE 3rd St,
STE 213, Dania, FL 33004