

## PERFECT LOVE — VAGABOND



**Builder:** VAGABOND

**Year Built:** 1975

**Model:** Cruising Ketch

**Price:** PRICE ON APPLICATION

**Location:** United States

**LOA:** 47' 0" (14.33m)

**Beam:** 13' 4" (4.06m)

**Min Draft:** 5' 6" (1.68m)

**Cruise Speed:** 7 Kts. (8 MPH)

**Max Speed:** 11 Kts. (13 MPH)

Our experienced yacht broker, Andrey Shestakov, will help you choose and buy a yacht that best suits your needs **PERFECT LOVE — VAGABOND** from our catalogue. Presently, at Shestakov Yacht Sales Inc., we have a wide variety of yachts available on our sale's list. We also work in close contact with all the big yacht manufacturers from all over the world.

If you would like to buy a yacht **PERFECT LOVE — VAGABOND** or would like help answering any questions concerning purchasing, selling or chartering a yacht, please call **+1(954)274-4435**

---

# TABLE OF CONTENTS

---

TABLE OF CONTENTS	2
SPECIFICATIONS	3
Overview	3
Basic Information	4
Dimensions	4
Speed, Capacities and Weight	4
Accommodations	4
Hull and Deck Information	4
Engine Information	5
PHOTOS	6
CONTACTS	29
Contact details	29
Telephones	29
Office hours	29
Address	29

---

# SPECIFICATIONS

---

## Overview

---

TOTAL RESTORATION -

BETTER THAN NEW!!!

FULLY LOADED...

This Vagabond 47 was built in 1975 by Blue Water Yacht Builders Limited of Taiwan. She was designed by William Garden as a long keel offshore cruiser and was built of heavy hand laid fiberglass as fashionable in the 70's. The vessel was purchased as a derelict by her present owner in 2008 and transported to Cincinnati, Ohio where she was stored on the hard. She was completely stripped and rebuilt, the only original components being the fiberglass hull and deck shell. The hull and deck underwent fiberglass repairs where needed and were reinforced at high-stress locations such as chain plates and thru/hull locations. The entire hull and deck topsides were taken down to bare glass. After a new, heavy layer of gel coat was applied, she was primed and painted with a 2 part epoxy paint system (Interlux Perfection). After being peeled, the hull below the waterline was re-coated with 5 layers of epoxy resin, five coats of barrier paint and three coats of Sea Hawk ablative bottom paint. A new rudder was built. The new ash and teak interior was professionally built, far exceeding, both in appearance and quality, the original as-new interior. New bulkheads, chain plates, engine mounts and mast compression posts were manufactured and installed. All deck and hull attachments are re-enforced with heavy, stainless steel backing plates. The engine, shafting, prop and generator are all new and have been professionally installed. Fuel tankage is new and built of heavy aluminum, new potable water tanks are food-grade stainless steel. The AC and DC electrical systems and plumbing systems are fully documented and professionally installed. There is no wood on the exterior of the yacht, all wood-like material is synthetic, UV-resistant PVC-based product requiring little-to-no maintenance. She has new aluminum masts, Schaefer roller-furling booms, sails, standing rigging and running rigging. A full complement of Raymarine electronics, including hydraulic auto-pilot, have been installed. The list is extensive and all work and expenditures have been documented by the owner. Take the time to watch the video of the owner's explanation and all of the photos posted here. A complete photographic history of the demolition and rebuild are also available for the serious buyer's review.

---

## Basic Information

---

**Category:** Cruising Ketch

**Sub Category:** Classic Yacht

**Model Year:** 1975

**Year Built:** 1975

**Country:** United States

---

## Dimensions

---

**LOA:** 47' 0" (14.33m)

**Beam:** 13' 4" (4.06m)

**Min Draft:** 5' 6" (1.68m)

**MFG Length:** 46' 6" (14.17m)

---

## Speed, Capacities and Weight

---

**Cruise Speed:** 7 Kts. (8 MPH)

**Cruise Speed RPM:** 1800 Kts.

**Max Speed:** 11 Kts. (13 MPH)

**Displacement:** 50000 Pounds

**Water Capacity:** 250 Gallons

**Holding Tank:** 35 Gallons

**Fuel Capacity:** 250 Gallons

---

## Accommodations

---

**Total Cabins:** 2

**Total Berths:** 3

**Total Heads:** 2

---

## Hull and Deck Information

---

**Hull Material:** Fiberglass

---

## Engine Information

---

**Engines:** 1

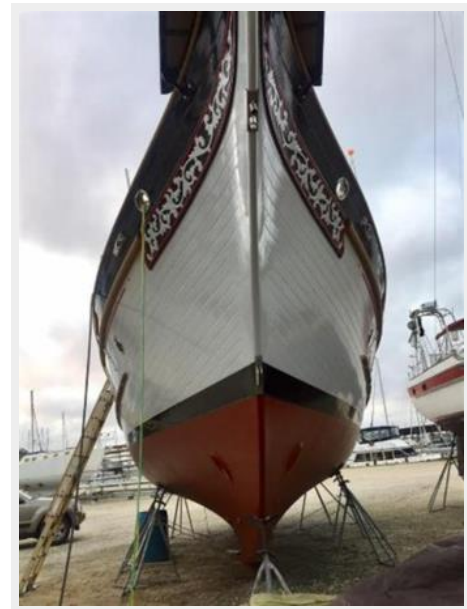
**Manufacturer:** Beta Mariner

**Model:** Model #, B-105HE.

**Engine Type:** Inboard

**Fuel Type:** Diesel

# PHOTOS













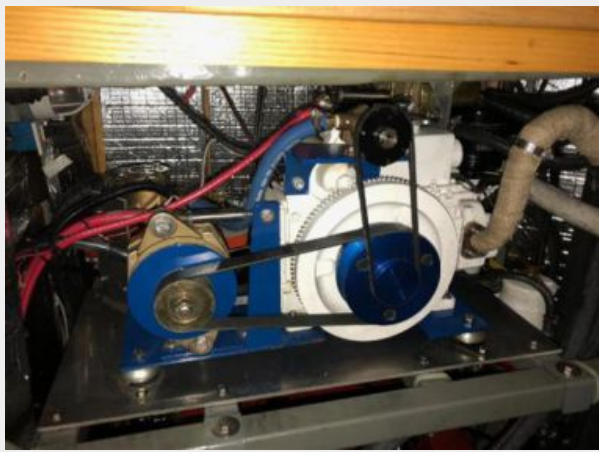




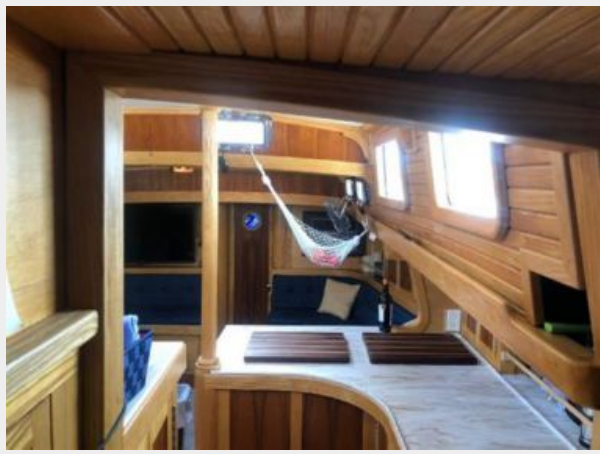








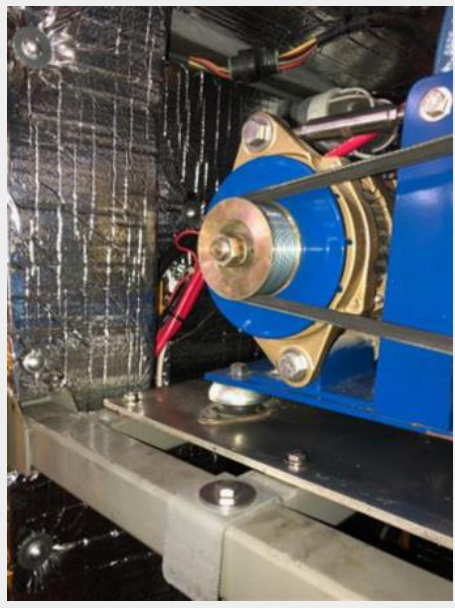




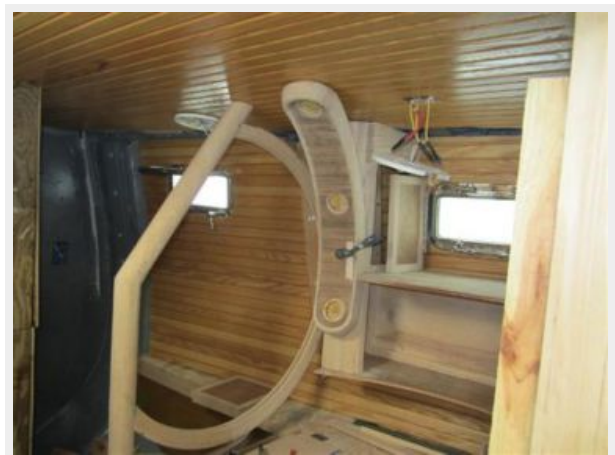




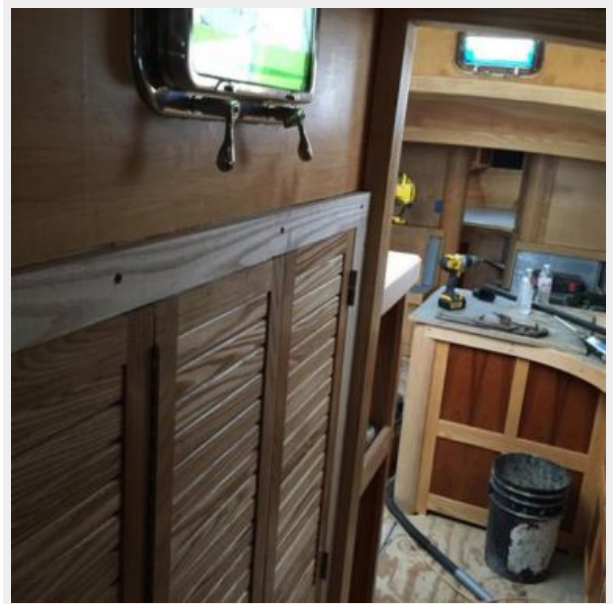
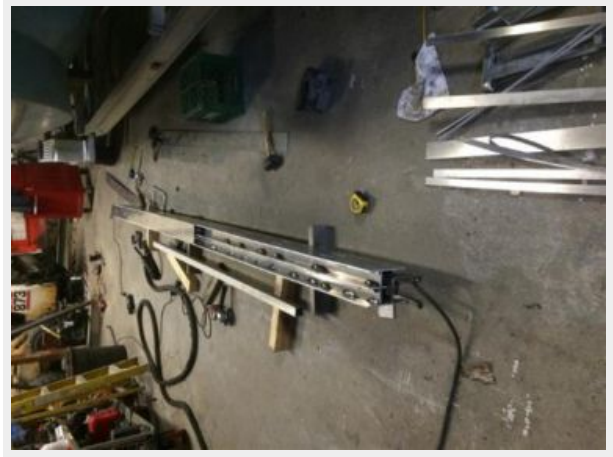








































# CONTACTS

---

Andrey Shestakov, leading yacht broker of the sales department of Shestakov Yacht Sales Inc. Shestakov Yacht Sales Inc., the official representative of the Miami/Fort Lauderdale FL headquarters.

## Contact details

---

Email: [andrey@shestakovyachtsales.com](mailto:andrey@shestakovyachtsales.com)

Web: [shestakovyachtsales.com/en/](http://shestakovyachtsales.com/en/)

## Telephones

---

USA: +1(954)274-4435

## Office hours

---

Monday – Saturday: **9:00 - 21:00** EDT

Sunday: **closed**

## Address

---



Harbour Towne Marina, 850 NE 3rd St,  
STE 213, Dania, FL 33004