

SASSAFRAS — SABRE YACHTS



Builder: SABRE YACHTS

Year Built: 1987

Model: Cruising Sailboat

Price: PRICE ON APPLICATION

Location: United States

LOA: 42' 0" (12.80m)

Beam: 12' 7" (3.84m)

Min Draft: 4' 8" (1.42m)

Max Draft: 8' 6" (2.59m)

Our experienced yacht broker, Andrey Shestakov, will help you choose and buy a yacht that best suits your needs **Sassafra** — **SABRE YACHTS** from our catalogue. Presently, at Shestakov Yacht Sales Inc., we have a wide variety of yachts available on our sale's list. We also work in close contact with all the big yacht manufacturers from all over the world.

If you would like to buy a yacht **Sassafra** — **SABRE YACHTS** or would like help answering any questions concerning purchasing, selling or chartering a yacht, please call **+1(954)274-4435**

TABLE OF CONTENTS

TABLE OF CONTENTS	2
SPECIFICATIONS	3
Overview	3
Basic Information	4
Dimensions	4
Speed, Capacities and Weight	4
Accommodations	4
Hull and Deck Information	4
Engine Information	4
PHOTOS	5
CONTACTS	9
Contact details	9
Telephones	9
Office hours	9
Address	9

SPECIFICATIONS

Overview

Be Sure To Watch The Walk-Through Video

Sassafras is an exceptional example of one of my personal favorite cruising designs. Her centerboard allows access to skinny anchorages while providing excellent sailing performance with her board down. She is fast, comfortable and is FUN to sail!

I personally took a five day cruise aboard this vessel in May 2018 and she performed flawlessly. She is extremely comfortable with a large galley, two staterooms and two heads. Her classic good looks attract attention everywhere she goes.

This Sabre is very well equipped for cruising. She is loaded with new top of the line equipment. New mast, rod standing rigging, running rigging, exterior canvas, fresh hull wax and bottom paint are just a few of the recent upgrades. All I can say is, WOW!!

Come take a look for yourself. You will not be disappointed!

Highlights Include:

- **Westerbeke 46- With 2,650 hours. Clean!**
- **Electric Secondary Winch (Halyards)**
- **Ultra leather Interior Fabrics**
- **Two Air Conditioning Units**
- **Wind Generator**
- **Two Furuno Chart plotters, Radar, AIS, Wind, Depth and Autopilot**
- **NEW Rig-Rite Spar (2017)**
- **NEW Rod Standing Rigging (2017)**
- **NEW Running Rigging (2017)**
- **NEW Bottom Paint (2017)**
- **NEW Hull Waxed (2017)**
- **NEW Dodger and Bimini (2017)**
- **Beautifully Finished Cabin Sole, and interior woodwork**
- **MaxProp Two Blade Feathering Propeller (Rebuilt 2017)**
- **New Cutlass Bearing (NEW 2017)**
- **9.5 AB Hypalon RIB w/ 9.8 Tohatsu 4 stroke Outboard**
-

Basic Information

Category: Cruising Sailboat

Model Year: 1987

Year Built: 1987

Country: United States

Dimensions

LOA: 42' 0" (12.80m)

LWL: 34' 0" (10.36m)

Beam: 12' 7" (3.84m)

Min Draft: 4' 8" (1.42m)

Max Draft: 8' 6" (2.59m)

Clearance: 56' 5" (17.20m)

Speed, Capacities and Weight

Water Capacity: 120 Gallons

Fuel Capacity: 40 Gallons

Accommodations

Total Cabins: 2

Total Berths: 2

Total Heads: 2

Hull and Deck Information

Hull Material: Fiberglass

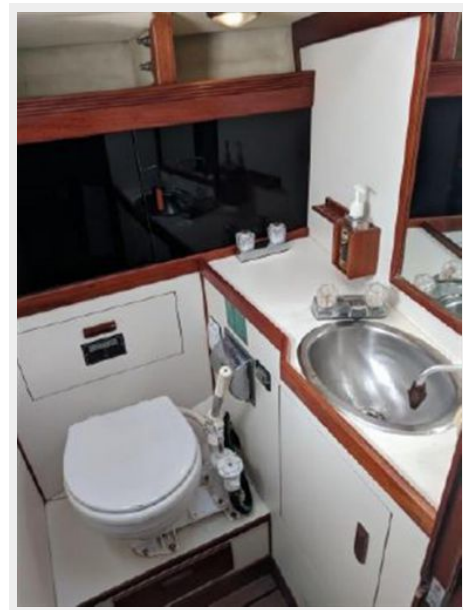
Engine Information

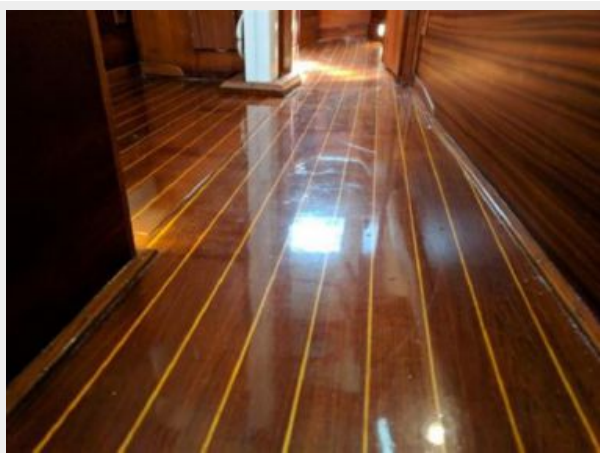
Engines: 1

Manufacturer: Westerbeke

PHOTOS









CONTACTS

Andrey Shestakov, leading yacht broker of the sales department of Shestakov Yacht Sales Inc. Shestakov Yacht Sales Inc., the official representative of the Miami/Fort Lauderdale FL headquarters.

Contact details

Email: andrey@shestakovyachtsales.com

Web: shestakovyachtsales.com/en/

Telephones

USA: +1(954)274-4435

Office hours

Monday – Saturday: **9:00 - 21:00** EDT

Sunday: **closed**

Address



Harbour Towne Marina, 850 NE 3rd St,
STE 213, Dania, FL 33004