

TUSCAN SPIRIT — HANSE



Судостроитель: HANSE

Год постройки: 2014

Модель: Cruising/Racing Sailboat

Цена: ЦЕНА ЯХТЫ ПО ЗАПРОСУ

Местонахождение: Italy

Длина общая: 62' 5" (19.00m)

Ширина: 17' 1" (5.20m)

Мин. осадка: 9' 9" (2.95m)

Крейс. скорость: 9 Kts. (10 MPH)

Макс. скорость: 11 Kts. (13 MPH)

Купить **TUSCAN SPIRIT — HANSE** а также выбрать подходящую вам яхту из нашего каталога яхт вам поможет опытный яхтенный брокер Андрей Шестаков. На сегодняшний день компания **Shestakov Yacht Sales Inc.** имеет большое количество яхт в собственном списке продаж, а также тесно сотрудничает со всеми крупными яхтенными производителями по всему миру.

Для того чтобы купить яхту **TUSCAN SPIRIT — HANSE** а также проконсультироваться по любому вопросу связанному с покупкой, продажей, чартером яхт позвоните по телефону **+7(918)465-66-44**.

ОГЛАВЛЕНИЕ

| | |
|---|----|
| ОГЛАВЛЕНИЕ | 2 |
| ХАРАКТЕРИСТИКИ | 5 |
| Обзор | 5 |
| Основная информация | 5 |
| Размеры | 5 |
| Скорость, вместимость и масса | 6 |
| Размещение | 6 |
| Корпус и палуба | 6 |
| Информация о двигателе | 6 |
| ПОДРОБНОЕ ОПИСАНИЕ | 7 |
| Accommodations | 7 |
| Lounge | 7 |
| Galley | 7 |
| Interior Spirit | 8 |
| Main Deck | 8 |
| Engines, Machinery & Mechanical Equipments | 9 |
| Electronics and Navigation Equipments | 10 |
| Windows | 11 |
| Safety & Fire Protection | 12 |
| Audio & Visual Equipment | 12 |
| Tender & Toys | 13 |
| Tuscan Spirit History | 13 |
| Исключения | 14 |
| Отказ от ответственности | 14 |
| ФОТОГРАФИИ | 16 |
| Tuscan Spirit - Hanse Yacht & Prima Design Custom Build | 16 |
| Tuscan Spirit - Hanse Yacht & Prima Design Custom Build | 16 |
| lounge | 16 |

| | |
|--|-----------|
| lounge | 16 |
| lounge | 17 |
| lounge | 17 |
| lounge | 17 |
| Master Cabin | 17 |
| master cabin | 18 |
| Master Cabin | 18 |
| Bathroom | 18 |
| Double Cabin - Starboardside | 18 |
| galley | 19 |
| double cabin starboard side | 19 |
| Galley | 19 |
| Galley | 19 |
| Galley | 20 |
| lounge detail | 20 |
| Tuscan Spirit - Hanse Yacht & Prima Design Custom Build | 20 |
| TS | 20 |
| Deck view - Tuscan Spirit - Hanse Yacht & Prima Design Custom Build | 21 |
| Deck View at anchorage | 21 |
| Tuscan Spirit Anchorage Position | 21 |
| Deck view | 21 |
| Anchorage Position - Tuscan Spirit | 22 |
| Anchorage Position | 22 |
| tuscan spirit | 22 |
| Anchorage position - Tuscan Spirit - Hanse Yacht & Prima Design Custom Build | 22 |
| Layout | 23 |
| КОНТАКТЫ | 24 |
| Контактная информация | 24 |
| Телефоны | 24 |

| | |
|--------------|----|
| Время работы | 24 |
| Адрес | 24 |

ХАРАКТЕРИСТИКИ

Обзор

Every detail of this 19m sailing yacht has been intricately planned by renowned Florence-based architecture and design firm : Prima Design. The real soul of Tuscan Spirit have been revealed thanks to the Prima Design Custom Team,using nobles and high quality materials compared to a standard Hanse 630e.

As her name suggests, TUSCAN SPIRIT has been projected to transmit the very essence of the region it hails from: choice of the materials, craftsmen, colours. In a luxurious & casual atmosphere, the sailing yacht comfortably accomodates six guests in three spacious cabins with plenty of storage place, along with three full-size bathrooms.

Expansive and elegantly-appointed entertaining spaces both inside and out allow for Guests to experience a refined life-style wherever TUSCAN SPIRIT may sail.

Ideal for sailing lovers who like top race performance allied with spacious living area on deck to enjoy cruising and a Tuscan decor inside to appreciate all the comfort as if you were in a Cosy Boutique Hotel!

Основная информация

Тип судна: Cruising/Racing Sailboat

Подкатегория: Представительская парусная яхта

Модельный год: 2014

Год постройки: 2014

Год обновления: 2017

Страна: Italy

Верх: Bimini Top

Кубрик: Да

Размеры

Длина общая: 62' 5" (19.00m)

Ширина: 17' 1" (5.20m)

Мин. осадка: 9' 9" (2.95m)

Скорость, вместимость и масса

Крейс. скорость: 9 Kts. (10 MPH)

Макс. скорость: 11 Kts. (13 MPH)

Дальность на макс. скорости: 400 Kts.

Чистый вес: 39.52 Pounds

Вместимость воды: 158.5032312 Gallons

Объем топливного бака: 211.3376416 Gallons

Расход топлива: 5.28344104 Gallons

Размещение

Всего кают: 3

Всего коек: 3

Спальные места: 6

Всего ком. состава: 3

Койки экипажа: 2

Спальных мест экипажа: 2

Комм. состав экипажа: 1

Корпус и палуба

Материал корпуса: Epoxy Composite

Материал палубы: Teak

Комплектация корпуса: Monohull

Цвет корпуса: Cream

Отделка корпуса: Inox

Дизайнер корпуса: Judel & Vrolijk

Дизайнер экстерьера: PRIMA DESIGN

Дизайнер интерьера: PRIMA DESIGN

Информация о двигателе

Двигатели: 1

Производитель: Volvo Penta

Модель: D3

Тип двигателя: Inboard

Тип топлива: Diesel

ПОДРОБНОЕ ОПИСАНИЕ

Accommodations

ACCOMODATION

Tuscan Spirit can accommodate up to 6 guests in 3 well appointed cabins :

- A Full Beam Master cabin: At the bow it is equipped with a queen size bed, its own bathroom with separate shower, wc, wash basin ; and suspended storage places and wardrobes ; TV, speakers for music, air cond command.
- A Double cabin : Located aft starboard side, this double cabin is equipped with a queen size bed, wardrobe and original suspended leather luggages to store light things, a LG Tv 23cm, air cond. A private bathroom with lavatory, , rain shower, speakers for music, air cond command.
- A Double/Twin cabin – Aft portside : This cabin has the particularity to be convert either as a double cabin or as a twin cabin. Blackboard, suspended leather luggages and LG Tv' 23 cm and air cond are available. It's own its private bathroom with shower, wc, lavatory and full storage place, speakers for music, air cond command.

Lounge

LOUNGE :

Tuscan Spirit is equipped with a luminous and large saloon featured with « Tuscan » materials such as alveolar walnut wood, leather on the floor, custom made hydraulic table...

The 2 sofas can be adjustable to match with dinning mode and could be convertible to have a rest ! These 2 sofas have been thought to be use as storage place below.

The 2 hydraulic tables can be adjusted for dining mode either for a desk or simply as charts table as well as storage place.

The lounge is equipment with TV on a rain and fall system, hidden cupboards for the audio and visual equipments, swithcboard, VHF, pannel control and 1 freezer & 1 fridge VITRIFRIGO.

Galley

GALLEY :

The open tailored galley has been designed by the well renowned craftsmen company Officine Gullo in Firenze. Traditional and artisanal design which match with modern equipments and requirements.

ALPI INOX Kitchen in aluminium

- Miele Dishwasher
- VITRIFRIGO 2x Fridges
- VITRIFRIGO Ice-maker
- Oven : Alfes
- Gas cooker - 3 fires places : Alfes
- Extraction fan : Miele
- Plenty of hidden storage place

The tableware is signed by Richard Ginori for the crockery, by Mario Luca Giusti for the glasses and by Sambonnet for the cutlery.

Interior Spirit

« The interior of Tuscan Spirit is designed for those who like to enjoy the pleasure of living in a refined space and who share passion for well made-things. »

Main Deck

MAIN DECK EQUIPMENT :

The outside deck is featured with :

- Aft Cockpit with 2 separate sofas and 2 customs hydraulic table which enable to either have dining area or sunbed area
- Bimini and sun awning set up during her last refit 2017/2018

- Wheels station
- Garage
- Access to the swimming platform
- Hydraulic swimming ladder
- Sunbeds area : 3 sun beds in the middle of the deck
- Access to the crew cabin at the bow
- Access to the chain hole

Engines, Machinery & Mechanical Equipments

ENGINES/GENERATOR/ELECTRICAL & MECHANICAL EQUIPMENTS:

Engine: Volvo Penta D3 150 hp

Hours: 1 350 hours (01/07/2018)

Service done once a year

Generators: Marine Generator 8Kw

Hours: 250h (01/07/2018)

Bow thruster : Max Power VIP 150 24V – 15 Hp

Air Condition/Heater:Riva Cond 2 units (12 000 BTU and 9 000 BTU).

Water maker:Schenker 100l/hour

Boiler : Brand of the boiler, capacity, year 2014 ?

Batteries :

Service bank : 24v, 1 250 amps 2017

Navigation bank 24 v, 600 amps - 2015

Other machinery :

ELECTRICAL :

Mastervolts inverter : Victron Energy Inverter 2000 W

Mastervolt charger : Victron Energy Charger Skilla-I 24/100

MECHANICAL :

Windlass : Electric Lofran

Gear box : Volvo Penta HS45AF-C

Propeller : Varifold high performance 4 folding blades

Anchor : Retractable anchor in inox with 100m chain.

Electronics and Navigation Equipments

ELECTRONICS AND NAVIGATIONAL EQUIPMENTS

2 wheels commands : 1 Master & 1 Slave

Radar: Garmin – Radome GMR 24 XHD

Satellite: Garmin

GPS: Garmin 1 master & 1 slave

Autopilot: Garmin

VHF : Garmin

Ais : Garmin

Control of tension mast & boom

Anchor command

Lights & Music command, Speakers

Main mast:

Carbon fiber mast - Axxon brand

23 m deck level & 26 m sea level

Nexus performance race information on main mast

Boom :

Carbon Fiber Boom Axxon with hydraulics Bacar Boom Vang

Main sail: 125 square meters – ONESAIL - 2014

Genoa sail: ONESAIL – Genoa 75 - 2014

2 additional sails in spare: ONESAIL – Code 0 and Asymetric Spinnaker

Automatic furling bamar electronic

Rod rigging

4 Electronic Lewmar winch

2 Manual Lewmar winch

Windows

DECK AND HULL WINDOWS:

- Master cabin : 2 large hull portholes, 2 small deck windows above the bed to see stars at night time.
- Bathroom master cabin : 2 smalls deck windows
- Portside and Starboard side cabin : 1 large hull porthole, 2 small windows with view onto the cockpit.
- Double bathroom cabin : 1 deck window1 hublot salle de bains donnant sur le pont tribord.
- Main lounge area : 3 deck skylight windows, 3 deck windows on each side and 3 hull portholes on each side.

Safety & Fire Protection

SAFETY AND FIRE PROTECTION:

Life rafts : 2 x 6 pax ARIMAR Solas B

Man over board recovery

EPIRB

All safety and flares

Fire extinguisher: 6 (1 automatic in the engine room, 1 in each cabin, 2 in the main saloon)

Audio & Visual Equipment

AUDIO & VISUAL EQUIPMENT

Master:

- LG TV 23 cm,
- Speakers,
- Air cond/Heater command

Aft cabins:

- LG TV 23 cm
- Speakers
- Air cond/Heater command

Saloon:

- LG Tv,
- Apple TV
- SKY TV
- Music station : Marantz Hifi System
- Xbox station
- Blue ray dvd
- WiFi system : Internet only with land signal coverage

Cockpit:

- Light & Music system command
- Speakers

Tender & Toys

TENDERS AND TOYS

- New inflatable tender Aermarine with 20hp Honda engine (2018)
- 1 paddle board
- 4 Snorkeling sets size 38 to 45
- An inflatable banana for kids

Tuscan Spirit History

HISTORY OF TUSCAN SPIRIT

The project started by the purchase of a bare hull designed by Judel & Vrolijk. Once the shell has

been made in Germany, it was transported to Tuscany where it arrived empty and ready to be molded into the stunning craft she is now thanks to the vision of Prima Design.

The work began with designating the space and a mood board selecting the finest materials and color palette to envision the ambiance the owner wanted to achieve.

Then the selected team of artisans was brought to Tuscany to execute the vision.

Like the Spirit of Tuscany itself the design is made of dark and wooden core solid, Italian walnut with leather panels. The open galley has been developed in an all-aluminum kitchen designed specifically for this sailing yacht to maximize space while maintain a light weight balance.

At 3 tons, the Tuscan Spirit weighs far less than other sailing yachts of its class allowing for greater speed and navigability.

In addition offering great race performance, the project included also the creation of storages and suitcases, boxes that hold the necessary items in the appropriate places while providing a soul and an Tuscan identity.

The Prima Design Custom Team has revealed the essence of Tuscan Spirit using high quality and noble materials compared to a standard Hanse 630e.

But unlike other mere sailing yachts, the Tuscan Spirit embodies the sole of a global traveler who has traversed the world and earned the tales of great journey.

The Tuscan Spirit beckons you aboard to share memories of the past and adventures yet to come.

Исключения

При продаже яхты исключаются личные вещи владельца.

Отказ от ответственности

Компания предоставляет описание судна или яхты добросовестно, но не может гарантировать точность этой информации, а также не ручается за техническое

состояние. Покупатель должен проинструктировать своих агентов или оценщиков исследовать представленную информацию более подробно, по собственному желанию. Продажа судна или яхты, изменение цены или снятие с продажи будет происходить без предварительного уведомления.

ФОТОГРАФИИ

**Tuscan Spirit - Hanse Yacht & Prima
Design Custom Build**



**Tuscan Spirit - Hanse Yacht & Prima
Design Custom Build**



lounge



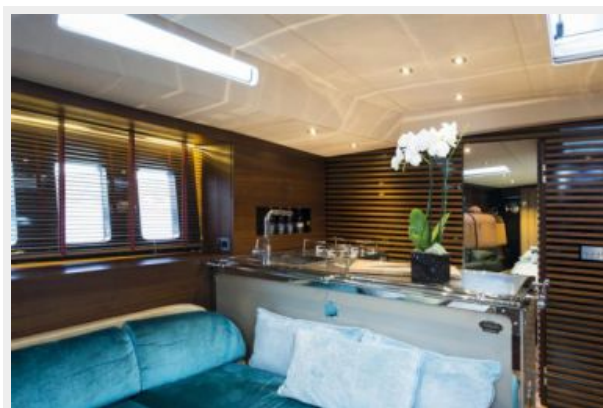
lounge



lounge



lounge



lounge



Master Cabin



master cabin



Master Cabin



Bathroom



Double Cabin - Starboardside



double cabin starboard side



galley



Galley



Galley



Galley



lounge detail



**Tuscan Spirit - Hanse Yacht & Prima
Design Custom Build**



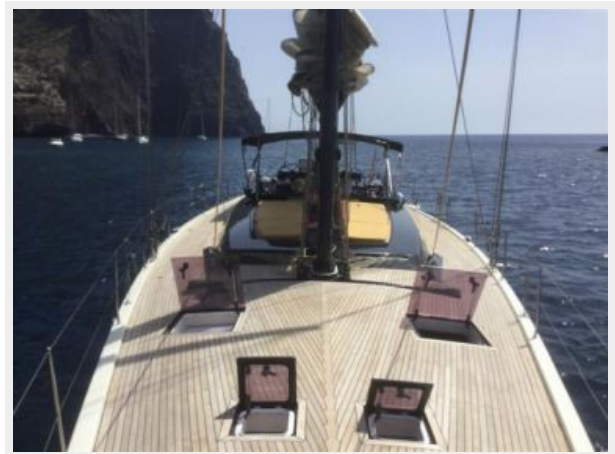
TS



Deck view - Tuscan Spirit - Hanse Yacht & Prima Design Custom Build



Deck View at anchorage



Tuscan Spirit Anchorage Position

Deck view



Anchorage Position - Tuscan Spirit



Anchorage Position



Anchorage position - Tuscan Spirit - Hanse Yacht & Prima Design Custom Build



tuscan spirit



Layout



КОНТАКТЫ

Андрей Шестаков (Andrey Shestakov) – ведущий яхтенный брокер отдела продаж яхт и судов компании Shestakov Yacht Sales Inc. Официальный представитель Shestakov Yacht Sales Inc. для русскоговорящих клиентов в центральном офисе компании в Майами/Форт Лодердейл/Флорида/США.

Контактная информация

Email: andrey@shestakovyachtsales.com

Web: shestakovyachtsales.com

Телефоны

Краснодарский край: **+7(918)465-66-44**

США, Майами, Флорида: **+1(954)274-4435**

Время работы

Понедельник – Суббота: **9:00 - 21:00**
EDT

Воскресенье: **Закрито**

Адрес



Harbour Towne Marina, 850 NE 3rd St,
STE 213, Dania, FL 33004