

## TANGO — BENETEAU



**Builder:** BENETEAU

**Year Built:** 2016

**Model:** Cruising Yacht

**Price:** PRICE ON APPLICATION

**Location:** United States

**LOA:** 45' 0" (13.72m)

**Beam:** 13' 5" (4.09m)

**Min Draft:** 4' 0" (1.22m)

**Max Draft:** 3' 9" (1.14m)

**Cruise Speed:** 24 Kts. (28 MPH)

**Max Speed:** 29 Kts. (33 MPH)

Our experienced yacht broker, Andrey Shestakov, will help you choose and buy a yacht that best suits your needs **Tango — BENETEAU** from our catalogue. Presently, at Shestakov Yacht Sales Inc., we have a wide variety of yachts available on our sale's list. We also work in close contact with all the big yacht manufacturers from all over the world.

If you would like to buy a yacht **Tango — BENETEAU** or would like help answering any questions concerning purchasing, selling or chartering a yacht, please call **+1(954)274-4435**

# TABLE OF CONTENTS

TABLE OF CONTENTS	2
SPECIFICATIONS	5
Overview	5
Basic Information	5
Dimensions	5
Speed, Capacities and Weight	6
Accommodations	6
Hull and Deck Information	6
Engine Information	6
DETAILED INFORMATION	7
Transom/Aft Deck	7
Salon	7
Galley	7
Lower Helm	8
Accommodations	8
FLYBRIDGE	9
ENGINE ROOM	9
Exclusions	9
Disclaimer	9
PHOTOS	10
Port Profile	10
Port Bow	10
Bow	10
Stbd Bow	10
Overhead	10
Aft Running	10
Grill/Sink on Swim Platform	11
Aft Still	11

Aft Deck Sunshade	11
Aft Deck Docking Station	11
Aft Deck Seating 1	11
Aft Deck Seating 2	11
Open Entry into Salon	12
Salon	12
Galley to Port	12
L-Shaped Seating Stbd	12
Salon Aft Open	12
Salon Aft Closed	12
Helm 1	13
Helm 2	13
Helm 3	13
Helm 4	13
Companionway 1	13
Volvo Joystick	13
Companionway 2	14
Full Beam Master Stateroom	14
Master Port	14
Master Stardboard	14
Head 1	15
Master Facing Forward	15
Head 2	15
VIP Stateroom	15
Stairs to Flybridge	16
VIP Stateroom 2	16
Flybridge	16
Grill and Sink	16
Helm 1	16

---

Helm 2	16
Helm 3	17
Flybridge Aft	17
Radar	17
Refrigerated Storage	17
Engineroom 1	17
AC	17
Onan Generator	18
Generator Hours	18
Stbd Engine	18
Port Engine	18
Port Engine Hours	18
Stbd Engine Hours	18
52	19
53	19
54	19
CONTACTS	20
Contact details	20
Telephones	20
Office hours	20
Address	20

---

# SPECIFICATIONS

---

## Overview

---

"Tango" is an exceptionally well-maintained Beneteau Monte Carlo 4 that is loaded with factory options. Her twin Volvo IPS500's have under 200 hours. If you are in the market for a two stateroom/2 head flybridge cruiser with remaining warranty, make sure you get onboard this boat.

Key Features Include:

- Volvo IPS 500 with 3 Joystick Docking Stations
- Onan Generator (190hrs as of 8/18)
- Metallic Paint Job (\$20K Option)
- Hydraulic Swim Platform with Grill and Sink Option
- Electric Sunshade
- Full Simrad Electronics: 2x NS12 lower helm; 1x NS12 in Flybridge; Radar, Depth, Autopilot with Remote
- SAT TV
- Bowthruster; Windlass
- Full Beam Master
- Dishwasher; Washer/Dryer Combo

## Basic Information

---

**Category:** Cruising Yacht

**Model Year:** 2016

**Year Built:** 2016

**Country:** United States

## Dimensions

---

**LOA:** 45' 0" (13.72m)

**Beam:** 13' 5" (4.09m)

**Min Draft:** 4' 0" (1.22m)

**Max Draft:** 3' 9" (1.14m)

**Clearance:** 17' 10" (5.44m)

---

## Speed, Capacities and Weight

---

**Cruise Speed:** 24 Kts. (28 MPH)

**Max Speed:** 29 Kts. (33 MPH)

**Displacement:** 27000 Pounds

**Water Capacity:** 106 Gallons

**Holding Tank:** 31 Gallons

**Fuel Capacity:** 290 Gallons

---

## Accommodations

---

**Total Cabins:** 2

**Total Berths:** 2

**Total Heads:** 2

---

## Hull and Deck Information

---

**Hull Material:** Fiberglass

---

## Engine Information

---

**Engines:** 2

**Manufacturer:** Volvo

**Model:** IPS500

**Engine Type:** Inboard

**Fuel Type:** Diesel

---

# DETAILED INFORMATION

---

## Transom/Aft Deck

---

Transom:

- Underwater Lights
- Hydraulic Swim Platform with Dinghy Cradle & Swim Ladder
- Galley Unit (Sink + Grill)
- Teak Decking

Aft Deck:

- Retractable Electric Sunshade
- Removable Telescopic Gangway
- Extra Joystick in cockpit
- Aft Navigation Camera
- Bose Sound System
- Bench Seating with Lazarette Access

## Salon

---

As you walk from the aft deck to the salon, the galley is immediately to the port which allows you to entertain guests either in the aft deck or salon. The doors open fully to allow for a very open feel.

- Fully Opening Salon Bay Door
- L-Shaped Settee to Stbd with Extendable Dinette
- Alpi Brushed Oak Finishes
- Fusion 700 Audio/DVD Player in Salon
- Electric Side Windows in wheelhouse
  
- Select Countertops in Leather
- Washing Machine Combined
- Heating with Water Circulation
- Mediterranean Air Conditioning - 42,000 BTU

## Galley

---

- Teak Flooring
- Oven Combo Grill
- Dishwasher

- Ice Maker
- 110v Water Heater
- Microwave
- Sink
- Fridge/Freezer
- Cooktop

## Lower Helm

---

- 2x Simrad NS12 (GPS, Radar, Depth, Autopilot)
- 4G Simrad Radar
- Simrad Module - WiFi Connection
- Simrad AC0 Auto Pilot
- Simrad AIS Receiver
- Simrad RS90 D VHF
- Aft Navigation Camera
- Thermal Camera
- Quick Bow Thruster Control; Volvo Throttle; Volvo Joystick
- Lenco Trim Tab Controls
- Volvo Engine Display
- Rudder Indicator
- VHF
- Fusion Stereo Controls
- Compass

## Accommodations

---

As you walk down the companionway, there are two well-appointed staterooms.

Master Stateroom (Amidship):

- Full Beam
- Queen Berth
- Large Windows
- Flatscreen TV
- Two Closets for Storage
- Bose Sound System
- Private Head with Stall Shower

VIP Stateroom (Forward)

- Queen Berth
- Storage Below; Closets



- Overhead Windows
- Private Head with Stall Shower

---

## FLYBRIDGE

---

- U-Shaped Seating with Teak Table
- Ice Box
- Bose Sound System
- Grill and Sink
- Sunpad
- Arch with SAT TV and Simrad Radar
- Thermal Camera

### Upper Helm:

- Simrad NS12 Chartplotter
- Quick Bow Thruster Control
- Volvo Engine Display
- Volvo Throttle and Joystick
- Fusion Stereo
- Compass

---

## ENGINE ROOM

---

- Dual Volvo IPS 500 with Joystick Control (180 Hours as of 8/18)
- Onan Generator 13.5k (190hrs as of 8/18)
- Inverter 2000 Watt

---

## Exclusions

---

Owner's personal belongings.

---

## Disclaimer

---

The Company offers the details of this vessel or yacht in good faith but cannot guarantee or warrant the accuracy of this information nor warrant the condition of the vessel. A buyer should instruct his representatives, agents, or his surveyors, to investigate such details as the buyer desires validated. This vessel or yacht is offered subject to prior sale, price change, or withdrawal without notice.

# PHOTOS

**Port Profile**



**Port Bow**



**Bow**



**Stbd Bow**



**Overhead**



**Aft Running**



**Aft Still**



**Grill/Sink on Swim Platform**



**Aft Deck Sunshade**



**Aft Deck Docking Station**



**Aft Deck Seating 1**



**Aft Deck Seating 2**





**Open Entry into Salon**



**Salon**



**Galley to Port**



**L-Shaped Seating Stbd**



**Salon Aft Open**



**Salon Aft Closed**



**Helm 1**



**Helm 2**



**Helm 3**



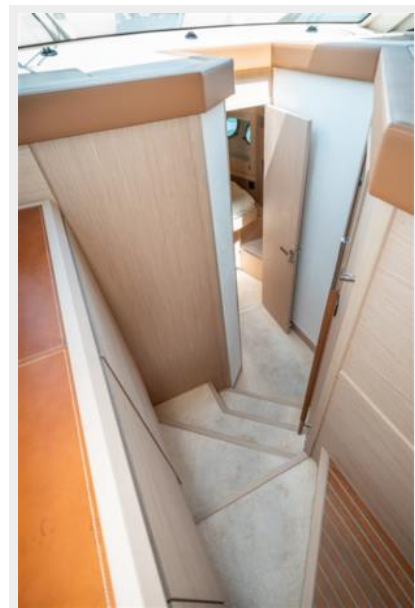
**Helm 4**



**Volvo Joystick**



**Companionway 1**

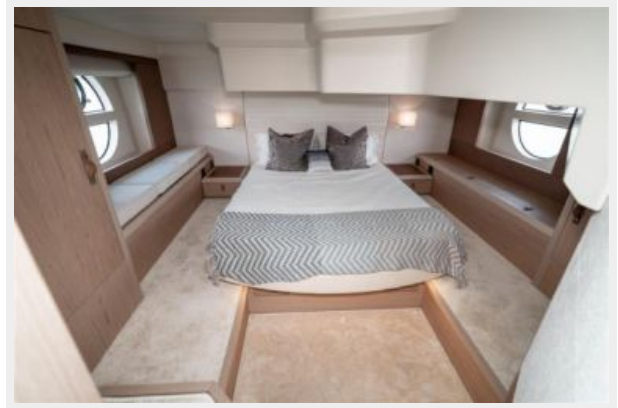




**Companionway 2**



**Full Beam Master Stateroom**



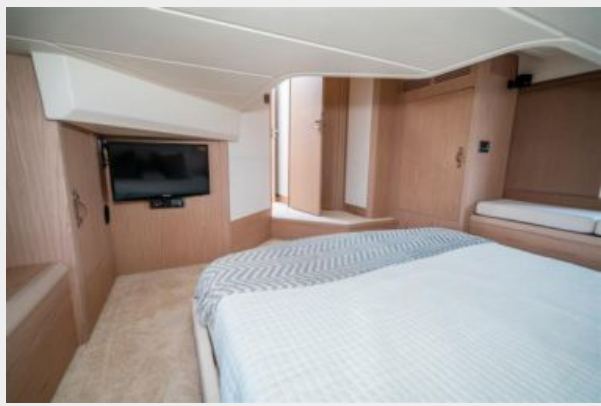
**Master Port**



**Master Stardboard**



**Master Facing Forward**



**Head 1**



**Head 2**



**VIP Stateroom**



VIP Stateroom 2



Stairs to Flybridge



Flybridge



Grill and Sink



Helm 1



Helm 2





**Helm 3**



**Flybridge Aft**



**Radar**



**Refrigerated Storage**



**Engine room 1**



**AC**



**Onan Generator**



**Generator Hours**



**Stbd Engine**



**Port Engine**



**Port Engine Hours**



**Stbd Engine Hours**



52



53



54





# CONTACTS

---

Andrey Shestakov, leading yacht broker of the sales department of Shestakov Yacht Sales Inc. Shestakov Yacht Sales Inc., the official representative of the Miami/Fort Lauderdale FL headquarters.

## Contact details

---

Email: [andrey@shestakovyachtsales.com](mailto:andrey@shestakovyachtsales.com)

Web: [shestakovyachtsales.com/en/](http://shestakovyachtsales.com/en/)

## Telephones

---

USA: +1(954)274-4435

## Office hours

---

Monday – Saturday: **9:00 - 21:00** EDT

Sunday: **closed**

## Address

---



Harbour Towne Marina, 850 NE 3rd St,  
STE 213, Dania, FL 33004