

43FT 1994 BRISTOL 43.3 CENTER COCKPIT — BRISTOL YACHTS



Судостроитель: BRISTOL YACHTS

Год постройки: 1994

Модель: Sloop

Цена: ЦЕНА ЯХТЫ ПО ЗАПРОСУ

Местонахождение: United States

Длина общая: 43' 0" (13.11m)

Ширина: 12' 11" (3.94m)

Мин. осадка: 4' 6" (1.37m)

Крейс. скорость: 7 Kts. (8 MPH)

Купить 43ft 1994 Bristol 43.3 Center Cockpit — BRISTOL YACHTS а также выбрать подходящую вам яхту из нашего каталога яхт вам поможет опытный яхтенный брокер Андрей Шестаков. На сегодняшний день компания Shestakov Yacht Sales Inc. имеет большое количество яхт в собственном списке продаж, а также тесно сотрудничает со всеми крупными яхтенными производителями по всему миру.

Для того чтобы купить яхту 43ft 1994 Bristol 43.3 Center Cockpit — BRISTOL YACHTS а также проконсультироваться по любому вопросу связанному с покупкой, продажей, чартером яхт позвоните по телефону **+7(918)465-66-44**.

ОГЛАВЛЕНИЕ

ОГЛАВЛЕНИЕ	2
ХАРАКТЕРИСТИКИ	3
Обзор	3
Основная информация	3
Размеры	4
Скорость, вместимость и масса	4
Размещение	4
Корпус и палуба	4
Информация о двигателе	4
ПОДРОБНОЕ ОПИСАНИЕ	5
The last Bristol 43.3 built - PRELIMINARY SPECS	5
Исключения	9
Отказ от ответственности	9
ФОТОГРАФИИ	10
Main Sail 2010 Pic 8-28-18	10
КОНТАКТЫ	15
Контактная информация	15
Телефоны	15
Время работы	15
Адрес	15

ХАРАКТЕРИСТИКИ

Обзор

Who wants a Deal?

Offered “**As Is Where Is**”, at a deeply discounted price for a prompt sale taking into consideration the current condition, buyer’s may survey at the dock but is **not** available to leave the dock.

August 2017 a pre-purchase survey was done (recommendation pages available for serious prospects).

The interior is in good condition the following work was done early 2018 reports & bills available:

This work was done due to "dock rash damage" from hurricane Irma but did not breach the hull.

- Fuel tanks replaced
- Dark blue paint job
- New bottom job
- Toe rail repair/replacement with a good varnish job

She needs:

- Generator seized needs repair or replacement
- Aft A/C unit does not blow cold
- Some of the electronics don't power up and some are very old
- Canvas & Eisen Glass needs replacement
- About 35 bungs in the decks need to be replaced but the deck is thick and serviceable.

Основная информация

Тип судна: Sloop

Модельный год: 1994

Год постройки: 1994

Страна: United States

Размеры

Длина общая: 43' 0" (13.11m)

Длина по ватерлинии: 33' 4" (10.16m)

Длина палубы: 43' 3" (13.18m)

Ширина: 12' 11" (3.94m)

Мин. осадка: 4' 6" (1.37m)

Трапы: 63' 0" (19.20m)

Скорость, вместимость и масса

Крейс. скорость: 7 Kts. (8 MPH)

Водоизмещение: 26530 Pounds

Вместимость воды: 152 Gallons

Вместимость сточного бака: 25 Gallons

Объем топливного бака: 60 Gallons

Размещение

Всего кают: 2

Всего коек: 4

Всего ком. состава: 2

Корпус и палуба

Материал корпуса: Fiberglass

Информация о двигателе

Двигатели: 1

Производитель: Westerbeke

Тип топлива: Diesel

ПОДРОБНОЕ ОПИСАНИЕ

The last Bristol 43.3 built - PRELIMINARY SPECS

Boat Name

RHUMB RUNNER II

Brokers comments

The last Bristol 43.3 built. The original owners hired a build-captain to be involved during construction with inspections every two weeks.

Centerboard shoal draft yacht has an ICW friendly 62' Hood electric Stow-away mast, electric winches

Specs

Builder: Bristol Yachts

Designer: Ted Hood

Flag of Registry: United States

Keel: Centerboard

Tanks

Fresh Water Tanks: (152 Gallons)

Fuel Tanks: Aluminum (60 Gallons) (New2018)

Holding Tanks: Fiberglass

Accommodations

Number of double berths: 3 Number of cabins: 2 Number of heads: 2

Electrical Equipment

Electrical Circuit: 110V AC

12V DC

Outside Equipment/Extras

Total Liferaft Capacity: 6

Electric Windlass

ACCOMMODATIONS

Sleeps six comfortably in two private staterooms and the main salon. The interior is richly finished in varnished cherry with solid trim, louvered locker doors and raised-panel cabin doors throughout. The cabin soles are solid varnished teak with holly inlay; hull ceilings are varnished cherry. Tasteful décor includes blue Ultrasuede in the main salon and curtains throughout. Numerous opening hatches and portholes provide light and ventilation.

FORWARD CABIN

The forward cabin features a large V-berth, with filler for conversion to a double, and a seat on the centerline. There is a hanging locker to starboard and numerous lockers and drawers. The head/shower is further aft, with access from both salon and privately from the forward cabin. It features a manual head, sink with Corian countertop, hand-held shower, cherry-framed mirrors and teak floor grate.

MAIN SALON

The main salon includes an L-shaped settee to port that converts to a double, with a settee to starboard which can also be used for sleeping. There is a fixed teak dining table with a large fold-up leaf on the centerline. Numerous storage spaces and lockers are provided outboard, each side, and within the table. Her generous beam and numerous hatches and portholes make this area large and open.

GALLEY

The functional galley is conveniently located to starboard and adjacent to companionway and features:

- Force 10 3-burner propane stove with oven
- Microwave oven
- Twin stainless sinks with cutting board
- Corian countertops
- Sea Frost 110-volt/engine driven refrigeration
- Top/front loading refrigerator and separate top loading freezer compartment
- Numerous drawers and lockers for food storage
- Dinnerware, glasses, and utensils

NAV STATION

Aft to port is a forward-facing navigation station with chart table and built-in navigation instruments. Electrical switch panels and battery controls are inboard, with full height doors for easy access to the engine and generator (currently not working), located under the mid-cockpit.

OWNER'S CABIN

The port passageway leads aft to the spacious owner's cabin, with centerline queen berth with

custom thicker bi-fold mattress, and generous storage space including a large hanging locker and bureaus each side. A large deck hatch and three opening portholes provide excellent light and ventilation. A private head with separate shower stall is to starboard, featuring manual head, sink with Corian counter, cherry framed mirror, teak shower grate, and numerous lockers.

ELECTRONICS and NAVIGATION EQUIPMENT

- Raymarine C-80 chart plotter at helm
- Raymarine autopilot (2012)
- ICOM M-59 VHF
- Raymarine depth and speed displays above companionway (2014)
- Ritchie 6" compass

ELECTRICAL SYSTEM

- 12-volt DC and 110-volt AC electrical system
- Circuit breaker panel with AC/DC meters
- Battery charger
- (2) 30-amp shore power inlets with (2) shore cables
- (2) 4D house batteries and (1) engine/generator start battery (NEW 2017)
- Hella cabin fans throughout

MECHANICAL EQUIPMENT and ENGINE DETAILS

- Westerbeke 63 hp diesel engine (2,800 hours)
- Dual Racor filters for the main engine
- Three-blade feathering propeller with line cutters
- Sidepower bow thruster
- Engine compartment exhaust blower
- MarineAir air conditioning, (2) zones, (new 2014)
- Pressure water system with 12-gallon water heater
- Stern hot/cold shower
- Fresh and salt water wash down
- (2) Aluminum fuel tanks (both new 2018)
- Fiberglass holding tanks for both heads
- Alarm system for bilge, fuel, oil, engine, and fire
- Propane sensor

SAILS and RIGGING

- Hood Stoway electric furling mast, painted white
- Harken roller furling genoa
- Stainless wire standing rigging
- Manual backstay adjuster

- Forespar rigid boom vang
- Spinnaker pole with storage on the mast
- Harken mainsheet traveler
- Furling mainsail (2010)
- 130% genoa (2010)
- Lewmar #58 ST electric primary winches
- Lewmar #44 ST outhaul and mainsheet winches
- (2) Lewmar halyard winches
- ABI centerboard hoist winch with wire pennant

DECK and HULL

Hull is Flag Blue Awlgrip with gold cove stripe, double white boot stripes and green bottom (all new Jan. 2018). The deck is highlighted by laid teak decks in excellent condition, offset by varnished teak toe rails, cabin nosing, handrails and cockpit trim. All exterior varnish was stripped and re-finished with seven coats of varnish in 2018 and is maintained on a regular basis. Her centerboard configuration offers a minimum draft of 4'-6" with the board up and a maximum draft of 10'-6" with the board down.

- Lewmar 1000 12-volt anchor windlass (rebuilt 2017)
- 45 lb CQR anchor with chain and nylon rode
- Delta anchor with rode and chain and separate hawse pipe
- Stainless stem head with dual anchor rollers
- (12) Stainless opening portholes with screens
- (6) Stainless deck hatches with custom screens and solar vents
- Stainless bow/stern rails, stanchions and lifelines with midship and stern gates
- Stainless backrest rails at the helm
- Stainless genoa tracks (inboard and outboard) and custom turning blocks
- Stainless mooring cleats and spring line chocks
- Stainless Force 10 BBQ grill with rail mount
- Stainless swim ladder with teak treads
- Painted rub rail with stainless striker
- Varnished teak cockpit table and drink holders
- (4) Varnished teak dorade boxes with cowl vents
- Varnished teak companionway hatch boards
- Dodger and bimini, tan Sunbrella, with stainless frames
- Cockpit cushions
- Edson steering pedestal with leather-rimmed stainless wheel
- Emergency tiller
- Teak outboard mount
- Stainless dinghy davits
- Outboard motor lift crane
- Dock lines and fenders
- (2) 10 lb. propane tanks

SAFETY EQUIPMENT

- 6-man life raft in valise
- (4) Lifejackets
- Man overboard module
- Radar reflector on the mast
- EPIRB

EXCLUSIONS

The owner's personal effects are excluded from the sale.

Исключения

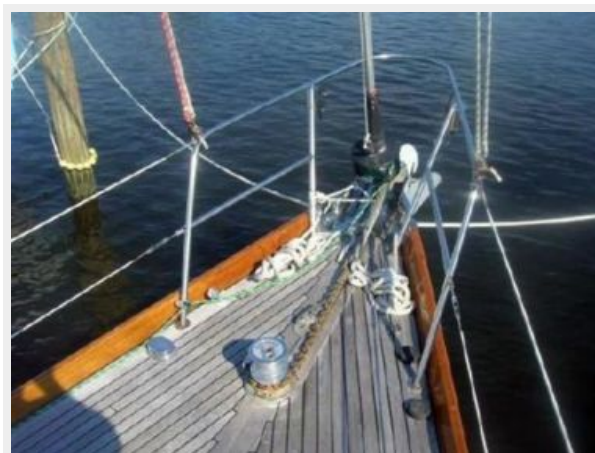
При продаже яхты исключаются личные вещи владельца.

Отказ от ответственности

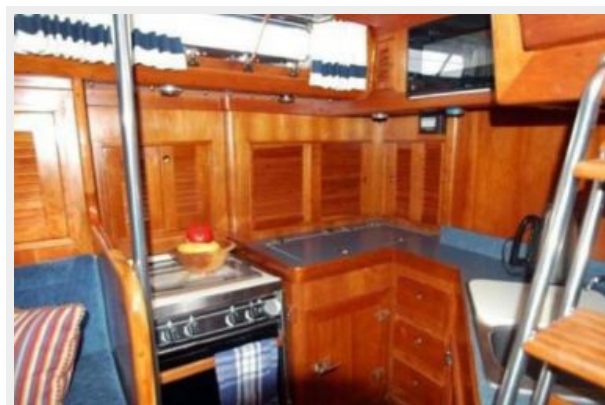
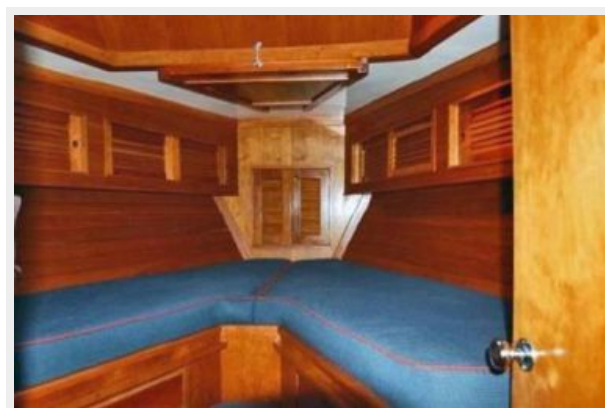
Компания предоставляет описание судна или яхты добросовестно, но не может гарантировать точность этой информации, а также не ручается за техническое состояние. Покупатель должен проинструктировать своих агентов или оценщиков исследовать представленную информацию более подробно, по собственному желанию. Продажа судна или яхты, изменение цены или снятие с продажи будет происходить без предварительного уведомления.

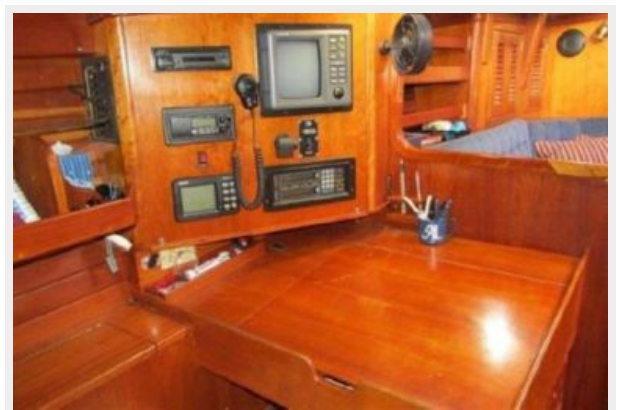
ФОТОГРАФИИ

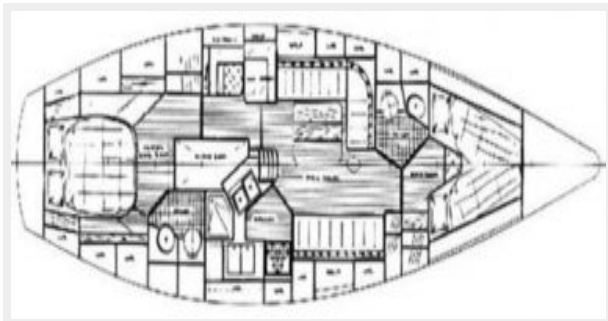
Main Sail 2010 Pic 8-28-18











КОНТАКТЫ

Андрей Шестаков (Andrey Shestakov) – ведущий яхтенный брокер отдела продаж яхт и судов компании Shestakov Yacht Sales Inc. Официальный представитель Shestakov Yacht Sales Inc. для русскоговорящих клиентов в центральном офисе компании в Майами/Форт Лодердейл/Флорида/США.

Контактная информация

Email: andrey@shestakovyachtsales.com

Web: shestakovyachtsales.com

Телефоны

Краснодарский край: **+7(918)465-66-44**

США, Майами, Флорида: **+1(954)274-4435**

Время работы

Понедельник – Суббота: **9:00 - 21:00**
EDT

Воскресенье: **Закрито**

Адрес



Harbour Towne Marina, 850 NE 3rd St,
STE 213, Dania, FL 33004