

N/A — SCHUCKER



Builder: SCHUCKER

Year Built: 1978

Model: Other

Price: PRICE ON APPLICATION

Location: United States

LOA: 40' 0" (12.19m)

Beam: 14' 0" (4.27m)

Cruise Speed: 7 Kts. (8 MPH)

Max Speed: 8 Kts. (9 MPH)

Our experienced yacht broker, Andrey Shestakov, will help you choose and buy a yacht that best suits your needs **N/A — SCHUCKER** from our catalogue. Presently, at Shestakov Yacht Sales Inc., we have a wide variety of yachts available on our sale's list. We also work in close contact with all the big yacht manufacturers from all over the world.

If you would like to buy a yacht **N/A — SCHUCKER** or would like help answering any questions concerning purchasing, selling or chartering a yacht, please call **+1(954)274-4435**

TABLE OF CONTENTS

TABLE OF CONTENTS	2
SPECIFICATIONS	3
Overview	3
Basic Information	3
Dimensions	4
Speed, Capacities and Weight	4
Accommodations	4
Hull and Deck Information	4
Engine Information	4
DETAILED INFORMATION	5
Accommodations	5
Galley	5
Electronics & Navigation Equipment	5
Electrical System	5
Deck	5
Mechanical Equipment & Engine Details	5
Sails & Rigging	6
Other Features, construction & details	6
Exclusions	6
Disclaimer	6
PHOTOS	7
CONTACTS	15
Contact details	15
Telephones	15
Office hours	15
Address	15

SPECIFICATIONS

Overview

New \$10,000 reduction, the owner wants her sold by Christmas. The vessel is in route to Marathon from Stuart.

SCHUCKER 436 1978

Rare motorsailer in great shape, perfect to cruise the Islands in comfort thanks to the low draft and the 1,300 miles cruise range.

A powerful wind generator, two large solar panels and a diesel generator will run everything including the dual A/C, refrigerator, freezer, washer/dryer and have power left to spare. The pilot cabin offers a great 360 degrees view with the large windows, has a Captain swivel chair and two opposite settees, three outside doors to the deck.

Three steps down, the galley is u shaped with a refrigerator and a freezer, three burners gas stove with oven and a microwave. On the port side, opposite of the galley, the dinette sits six and converts to a double bed.

The master cabin is forward, with a queen size bed and lots of storage and seven feet of lockers. The head is forward, with a new composting toilet and a separate shower.

This solid yacht had wide side decks, steps to the roof, an electric windlass and anchors on double rollers and a bow thruster .

The electronics include Lowrance radar and chartplotter and Raymarine autopilot with a wireless remote.

Underwater lights, swim platform and an inflatable dinghy with a 6HP Yamaha complete the package.

The owner is looking for a bigger boat and ready to move on.

Basic Information

Category: Other

Model Year: 1978

Year Built: 1978

Country: United States

Fly Bridge: Yes

Cockpit: Yes

Dimensions

LOA: 40' 0" (12.19m)

LWL: 33' 1" (10.08m)

Beam: 14' 0" (4.27m)

Speed, Capacities and Weight

Cruise Speed: 7 Kts. (8 MPH)

Max Speed: 8 Kts. (9 MPH)

Accommodations

Total Cabins: 1

Hull and Deck Information

Hull Material: Fiberglass

Engine Information

Engines: 2

Manufacturer: Perkins

Model: 4108

Engine Type: Inboard

Fuel Type: Diesel

DETAILED INFORMATION

Accommodations

Sleeps 2 owners and guests in 1 stateroom. Master Stateroom is located forward with a double berth, head, separate shower, and plenty of storage. Galley with a dinette that converts into a sleeper for two additional guests, is located three steps down from the salon. The Main Salon is large and open with lots of natural light, two opposite settees and swivel captain chair.

Galley

Water heater Pressure water system

Refrigerator and separate freezer 3 Burners gas stove with oven Microwave oven

Electronics & Navigation Equipment

Raymarine Auto Pilot with wireless Smart Controller Compass Depth Sounder VHF

Lowrance Radar Wind indicator Lowrance HDS 10 Chart Plotter

Electrical System

3 Batteries Battery Parallel Switch Automatic Battery Charger Dockside Electrical CableXantrex Battery Monitor Blue Sky Solar Display Monitor

Phasor Marine Generator - 800 Hours DC 12V Electrical System AC 110V Electrical System Wind Generator 2 Large Solar Panels

Deck

1 Plough & 1 Danforth Anchors w/lines and chain Fiberglass Deck Material Electric Windlass Teak Swim Platform

Air Horns Fenders and Lines Life Jackets Navigation Lights

Mechanical Equipment & Engine Details

Dual AC units

2 auto bilge pumps

C-Marine bow thruster

Cabin controls

Engine alarm

Wheel steering

Fuel Filters

Perkins 4108 50 HP Rebuilt 750 hours

Sails & Rigging

Cruise Equipped 2 Main, 1 Genoa and 1 Spinnaker

Other Features, construction & details

Underwater lights

Splendide Washer and Dryer

New composting Toilet

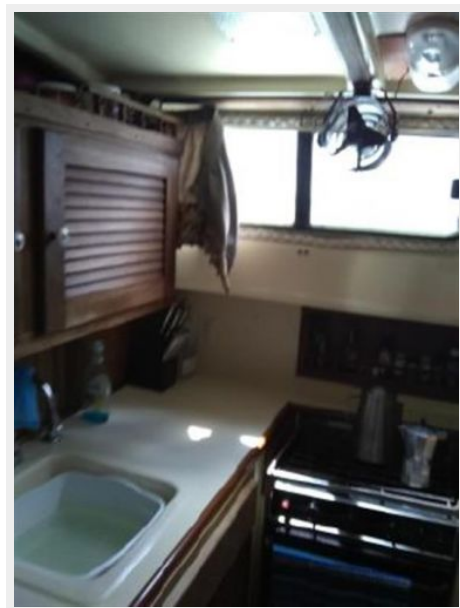
Exclusions

Owner's personal belongings.

Disclaimer

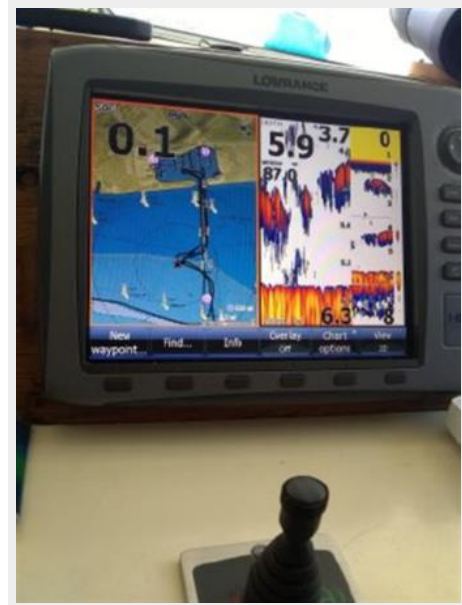
The Company offers the details of this vessel or yacht in good faith but cannot guarantee or warrant the accuracy of this information nor warrant the condition of the vessel. A buyer should instruct his representatives, agents, or his surveyors, to investigate such details as the buyer desires validated. This vessel or yacht is offered subject to prior sale, price change, or withdrawal without notice.

PHOTOS

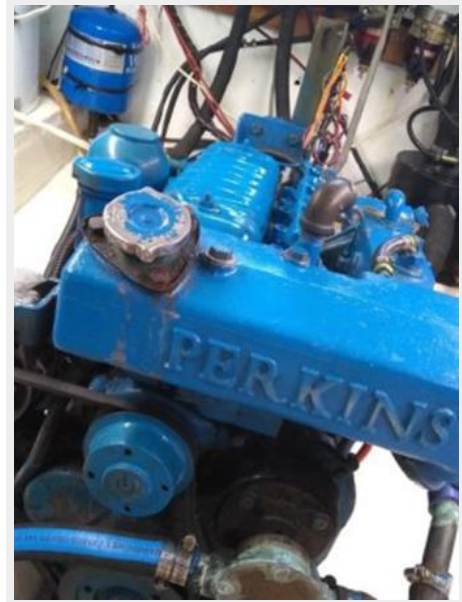
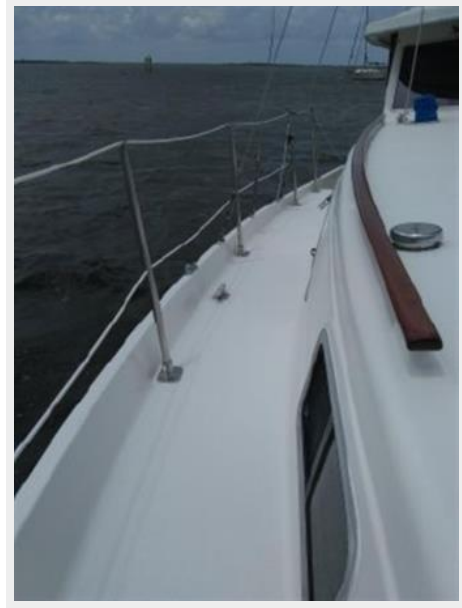




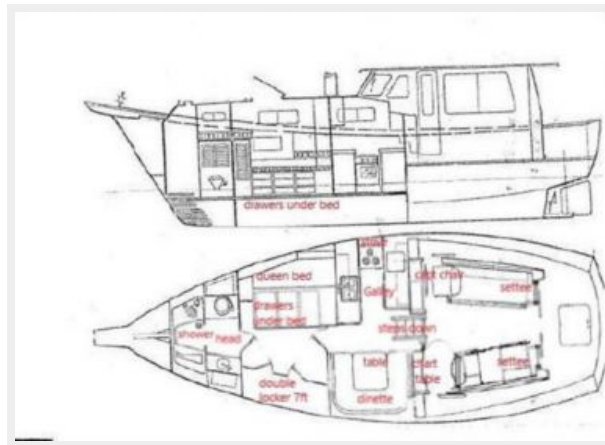
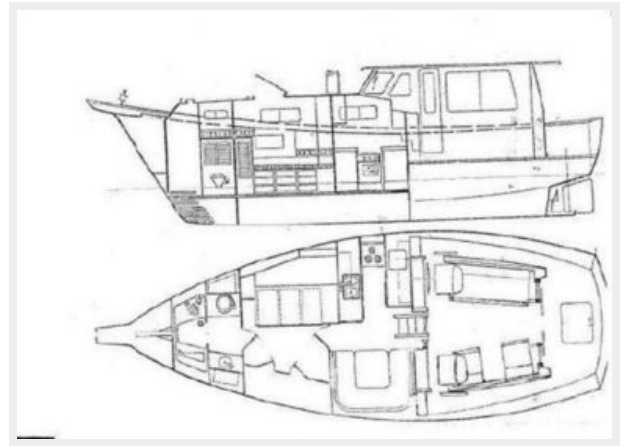












CONTACTS

Andrey Shestakov, leading yacht broker of the sales department of Shestakov Yacht Sales Inc. Shestakov Yacht Sales Inc., the official representative of the Miami/Fort Lauderdale FL headquarters.

Contact details

Email: andrey@shestakovyachtsales.com

Web: shestakovyachtsales.com/en/

Telephones

USA: +1(954)274-4435

Office hours

Monday – Saturday: **9:00 - 21:00** EDT

Sunday: **closed**

Address



Harbour Towne Marina, 850 NE 3rd St,
STE 213, Dania, FL 33004