

CASUAL WATER — FEADSHIP



Builder: FEADSHIP

Year Built: 1987

Model: SHELBY

Price: PRICE ON APPLICATION

Location: United States

LOA: 110' 0" (33.53m)

Beam: 22' 11" (6.98m)

Min Draft: 7' 0" (2.13m)

Max Draft: 7' 0" (2.13m)

Cruise Speed: 11 Kts. (13 MPH)

Max Speed: 14 Kts. (16 MPH)

Our experienced yacht broker, Andrey Shestakov, will help you choose and buy a yacht that best suits your needs **CASUAL WATER — FEADSHIP** from our catalogue. Presently, at Shestakov Yacht Sales Inc., we have a wide variety of yachts available on our sale's list. We also work in close contact with all the big yacht manufacturers from all over the world.

If you would like to buy a yacht **CASUAL WATER — FEADSHIP** or would like help answering any questions concerning purchasing, selling or chartering a yacht, please call **+1(954)274-4435**

TABLE OF CONTENTS

| | |
|---|----|
| TABLE OF CONTENTS | 2 |
| SPECIFICATIONS | 4 |
| Basic Information | 4 |
| Dimensions | 4 |
| Speed, Capacities and Weight | 4 |
| Accommodations | 4 |
| Hull and Deck Information | 5 |
| Engine Information | 5 |
| DETAILED INFORMATION | 6 |
| CONSTRUCTION | 6 |
| DIMENSIONS | 6 |
| MACHINERY | 6 |
| COMMUNICATION, NAVIGATION & ENTERTAINMENT SYSTEMS | 7 |
| GALLEY & LAUNDRY EQUIPMENT | 8 |
| TENDERS & TOYS | 8 |
| DECK EQUIPMENT | 8 |
| SECURITY, FIRE FIGHTING & SAFETY EQUIPMENT | 9 |
| ACCOMMODATIONS | 9 |
| COMMENTS | 10 |
| HIGHLIGHTS | 10 |
| REFIT SUMMARY | 10 |
| EXCLUSIONS | 10 |
| Exclusions | 10 |
| Disclaimer | 11 |
| PHOTOS | 12 |
| CONTACTS | 15 |
| Contact details | 15 |
| Telephones | 15 |

| | |
|--------------|----|
| Office hours | 15 |
| Address | 15 |

SPECIFICATIONS

Basic Information

Category: SHELBY

Sub Category: Raised Pilothouse

Model Year: 1987

Year Built: 1987

Refit Year: 2016

Country: United States

Vessel Top: Raised Pilothouse

Fly Bridge: Yes

Cockpit: Yes

Dimensions

LOA: 110' 0" (33.53m)

Beam: 22' 11" (6.98m)

Min Draft: 7' 0" (2.13m)

Max Draft: 7' 0" (2.13m)

Speed, Capacities and Weight

Cruise Speed: 11 Kts. (13 MPH)

Max Speed: 14 Kts. (16 MPH)

Gross Tonnage: 233 Pounds

Water Capacity: 1750 Gallons

Fuel Capacity: 7000 Gallons

Accommodations

Total Cabins: 3

Sleeps: 8

Total Heads: 4

Crew Cabin: 3

Crew Berths: 6

Hull and Deck Information

Hull Material: Steel

Hull Configuration: Full Displacement

Hull Color: Westminster Blue

Hull Designer: De Voogt

Exterior Designer: DeVoogt

Interior Designer: Martie Pottinger

Engine Information

Engines: 2

Manufacturer: Cummins

Model: VTA 1710

Engine Type: Inboard

Fuel Type: Diesel

DETAILED INFORMATION

CONSTRUCTION

Full Displacement, Steel Hull

DIMENSIONS

General

| | | |
|--------------------------|-------------|----------------|
| Length Overall (L.O.A.): | 110.00 feet | (33.50 meters) |
| Beam (molded): | 22.96 feet | (7.00 meters) |
| Draft (loaded): | 7.00 feet | (2.10 meters) |

Capacities

| | | |
|-----------------|----------------------------------|-----------------|
| Fuel Capacity: | 7,000 US Gallons | (26,498 liters) |
| Water Capacity: | 1,750 US Gallons | (6,624 liters) |
| Watermakers: | (2) Watermaker Inc. 1,200 US gpd | |

Speed

| | |
|-------------|------------|
| Maximum: | 14.0 knots |
| Cruising: | 11.0 knots |
| Economical: | 10.0 knots |

@PAGEBREAK@

MACHINERY

Main Engines

| | |
|-----------------------------|--------------------------------------|
| Engine Type: | • (2) Cummins VTA 28-M, @ 650Hp each |
| Gearboxes for Main Engines: | • (2) Eisenwerke 3.571:1 |
| Drive: | • Propeller |

Generators & Electricity

| | |
|--------------|--|
| Output: | • 120v Electrical System |
| Generators: | • (2) 50 kW Northern Lights generators (Complete rebuild 2016) Hours 3370 4/1/2021 |
| Shore Power: | • Atlas Shore Power System |
| Batteries: | • (4) 8D Main Engines (new June 2017) |

- Air Conditioning
Type: • (3) Marine Air 60,000 btu
- Other Machinery
- Watermakers: • (2) Watermaker Inc.
- Trim Tabs/Stabilizers: • Naiad Stabilizers
- Bow Thruster: • Schuttle
- Steering System: • Tenford hydraulic steering
- Fuel Separator & Filtration: • Alpha Laval MAB 103B-24
- Sewage System: • Microphore
- Fresh Water System: • (2) Burkes Fresh Water Pumps
- @PAGEBREAK@

COMMUNICATION, NAVIGATION & ENTERTAINMENT SYSTEMS

Communication Systems

- SATcom: • Mini M System
- Telephone System: • Panasonic
- SSB: • Sailor
- VHF: • VHF - Icom M502 & M602, new 2007
- Cellular Phone System: • Amplified Cell/Wi-Fi Antenna
- Intercom: • Panasonic

Navigation Systems

- Radar: • Furuno blackbox FAR 28X7 series
- Gyrocompass: • Simrad AR 80
- Magnetic Compass: • Compass overhead magnetic type
- Auto Pilot: • Simrad 850
- Depth Sounder: • Datamarine D 3001 Int'l Offshore
• Furuno FCV-582L
- GPS: • (3) Garmin touch screen (new December 2016)
- Weather FAX: • Furuno, Fax 2007, new 2007
- Ships Computer: • Toshiba, new 2010
- Navigation: • Nobletrec / Transas w/ HP computer
- Wind/Speed Log: • B&G hydra 200
- AIS: • Furuno FA150

Entertainment System

- Video Equipment - TVs:
- (6) Crew Rooms
 - (4) Guest Staterooms

@PAGEBREAK@

GALLEY & LAUNDRY EQUIPMENT

Main Galley Equipment

- Cooking Equipment: • (2) Viking ovens / Miele Cooktop
- Refrigeration/Freezer: • SubZero Fridge/Freezer

Crew Galley/Mess Equipment

- Cooking Equipment: • Microwave
- Refrigeration/Freezer: • SubZero Fridge

Additional Galley Equipment

- Refrigeration/Freezer: • Foster fridge/freezer

Laundry Equipment

- Main Laundry Equipment:
- (2) Miele 6065 professional washers
 - (2) Miele 7136 professional dryers

TENDERS & TOYS

(1) 2015 Novurania 18' w/ 2015 115 hp Yamaha 4-stroke (1) 2005 Novurania 18' w/ 2012 115 hp Yamaha 4-stroke New covers for both in 2017 @PAGEBREAK@

DECK EQUIPMENT

- Anchor Windlass System: • (1) Stein 19.48 single motor with dual capstans
- Aft Warping Capstans: • (2) Stein 59.44
- Anchors: • (2) Poole high holding power (135 kg each) gal
- Anchor Chain: • 450 feet, port and starboard
- Boat Crane and Davits: • (2) Marquipt 3000

SECURITY, FIRE FIGHTING & SAFETY EQUIPMENT

Security Equipment

Cameras: • (5) total

Monitors: • (6) total

Fire Fighting Equipment

Fire Control System: • FM 200 engine room fire suppression system

Fire Extinguishers: • Ample amount of handheld fire extinguishers

Alarms: • Fire Alarm Panel in wheelhouse, head sensors throughout overheads

Safety Equipment

Life Rafts: • (2) 8 person canister life rafts

Life Rings: • (3) 24" throw rings

EIPIRBS: • (2) 406 MHZ

Flares: • Ample amount of Up to Date hand flares

Medical Equipment: • Large first aid kit w/ oxygen bottle and defibrillator

@PAGEBREAK@

ACCOMMODATIONS

GENERAL MAIN SALON The spacious main salon decorated in soft beiges, teak paneling, soft lighting, entertainment center, and stairs down to the guest accommodations. New decor 2016.

DINING The dining salon has seating for 8 guests at the dining table. **GALLEY & LAUNDRY EQUIPMENT** The new Galley is located on the main deck level, open and spacious with all the necessary amenities (all new in 2010 and 2014) **OWNER** Located amidships below with a king size bed, side chairs, dressers, his/hers baths with shower and tub, fixtures are gold, surfaces finished in marble. **AFT DECK** The aft deck has comfortable seating for 8 and full wet bar. There are steps down to the cockpit. **PILOTHOUSE** The raised pilothouse has a full navigation station, steps up to the fly bridge and boat deck which has 2 Marquipt 3000 lb cranes. **GUESTS** There are port and starboard guest staterooms. The port guest Stateroom has a queen size bed, head & shower with tub. The starboard guest stateroom has twin beds and a head with shower.

FORWARD STUDY/ADDITIONAL STATEROOM The study is located forward of the galley on the main deck level and features a desk, convertible sofa and a full head and shower. **CREW** Captain's quarters are separate with a bath. Two additional crew cabins for 4 persons, 2 heads and showers, crew dinette. @PAGEBREAK@

COMMENTS

A classic Feadship in every sense, **CASUAL WATER** has been completely restored from stem to stern, and is ready for a new owner to take delivery. Built in 1987 by an experienced yachtsman, and refit in 2015/16, she has been meticulously maintained over time with no costs spared. Her shallow draft and Cummins engines allow for both coastal cruising, and transatlantic crossings.

HIGHLIGHTS

Top Dutch pedigree Beam 22'11" (6.98m); draft 7' (2.13m) Serviced by up to 6 crew
Accommodations for 8 guests in 3/4 staterooms; study converts to a stateroom Steel hull/aluminum superstructure Twin Cummins engines; cruising speed at 11 knots, max speed at 14 knots US Duty Paid @PAGEBREAK@

REFIT SUMMARY

Custom sun pads fabricated and installed on foredeck New aft deck awnings and tender covers on boat deck New 18' Novurania Tender New soft goods in main salon and staterooms (2) new 6" Garmin Navigation touch screen chart plotters added to flybridge navigation equipment New Paint April 2015 Flybridge All wood stripped down and built backup to high gloss finish Chrome replated New guests tender New hardtop New helm electronics Removed aft deck A/C unit Replaced all cushions and covers Replaced helm seats with Murrays Safety equipment updated Bridge Wood has been stripped down and refinished Gold replated New electronics Replaced leather couch Safety equipment updated @PAGEBREAK@ Main deck Aft deck enclosure removed. Deck area is now open. All wood stripped down and built backup to satin finish Chrome replated Galvanize anchors Hull painted midnight blue New aft deck speakers and lights Removed aft deck A/C. Replaced aft deck over-head Replaced all cushions and covers Replaced both anchor chains Safety equipment updated Windlass rebuilt Interior All gold replated All soft goods replaced throughout vessel 2011 Audio visual replaced throughout Galley completely renovated Varnish refinished Engineering Added soft starts to all A/C compressors and air compressor Installed soundproof boxes to generators Main engine exhaust valves replaced New generator exhaust system New hot water heater New paint throughout engine room Water makers overhauled Fire and bilge pumps overhauled A/C condensers are new in both the crew quarters and galley Engines Complete rebuild October 2007 @PAGEBREAK@

EXCLUSIONS

NAME RESERVED Exclusions include all of Owners' and crew's personal effects.

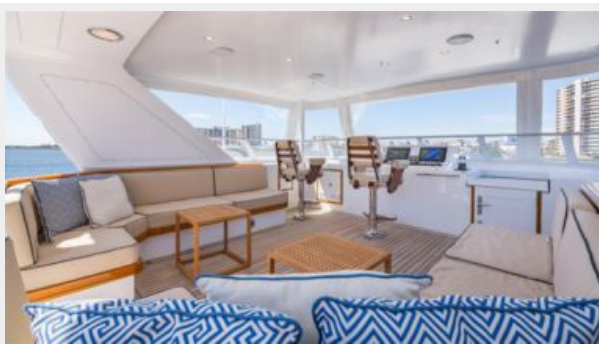
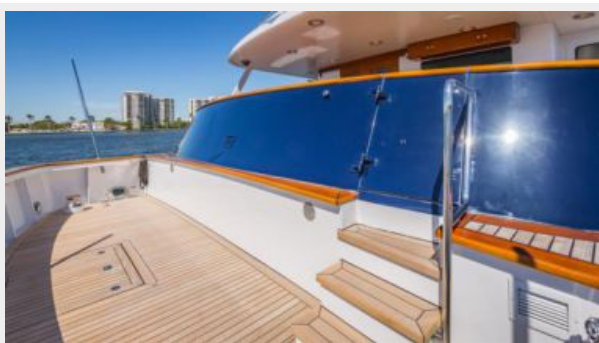
Exclusions

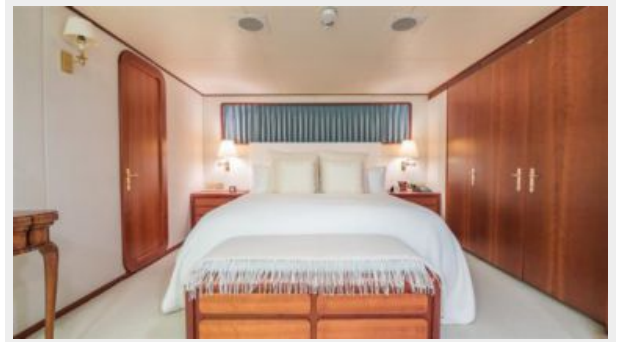
Owner's personal belongings.

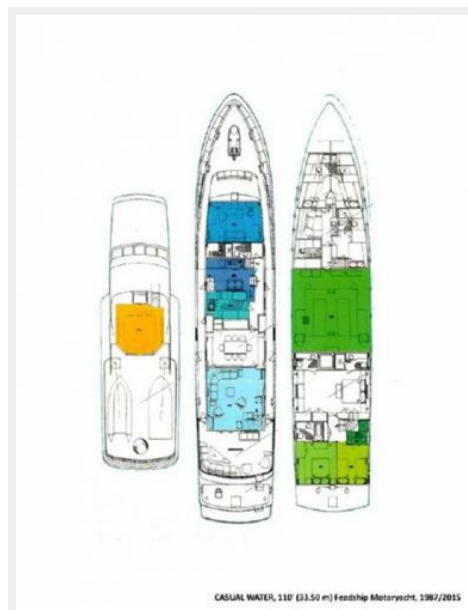
Disclaimer

The Company offers the details of this vessel or yacht in good faith but cannot guarantee or warrant the accuracy of this information nor warrant the condition of the vessel. A buyer should instruct his representatives, agents, or his surveyors, to investigate such details as the buyer desires validated. This vessel or yacht is offered subject to prior sale, price change, or withdrawal without notice.

PHOTOS







CONTACTS

Andrey Shestakov, leading yacht broker of the sales department of Shestakov Yacht Sales Inc. Shestakov Yacht Sales Inc., the official representative of the Miami/Fort Lauderdale FL headquarters.

Contact details

Email: andrey@shestakovyachtsales.com

Web: shestakovyachtsales.com/en/

Telephones

USA: +1(954)274-4435

Office hours

Monday – Saturday: **9:00 - 21:00** EDT

Sunday: **closed**

Address



Harbour Towne Marina, 850 NE 3rd St,
STE 213, Dania, FL 33004