

SILVER MOON — WESTPORT



Судостроитель: WESTPORT

Год постройки: 2004

Модель: Моторная яхта

Цена: **ЦЕНА ЯХТЫ ПО ЗАПРОСУ**

Местонахождение: United States

Длина общая: 112' 0" (34.14m)

Ширина: 23' 0" (7.01m)

Макс. осадка: 6' 6" (1.98m)

Крейс. скорость: 18 Kts. (21 MPH)

Макс. скорость: 24 Kts. (28 MPH)

Купить **SILVER MOON — WESTPORT** а также выбрать подходящую вам яхту из нашего каталога яхт вам поможет опытный яхтенный брокер Андрей Шестаков. На сегодняшний день компания **Shestakov Yacht Sales Inc.** имеет большое количество яхт в собственном списке продаж, а также тесно сотрудничает со всеми крупными яхтенными производителями по всему миру.

Для того чтобы купить яхту **SILVER MOON — WESTPORT** а также проконсультироваться по любому вопросу связанному с покупкой, продажей, чартером яхт позвоните по телефону **+7(918)465-66-44**.

ОГЛАВЛЕНИЕ

ОГЛАВЛЕНИЕ	2
ХАРАКТЕРИСТИКИ	4
Обзор	4
Основная информация	4
Размеры	4
Скорость, вместимость и масса	4
Размещение	5
Корпус и палуба	5
Информация о двигателе	5
ПОДРОБНОЕ ОПИСАНИЕ	6
Accommodations	6
Interior Refit, 2017	6
Main Salon & Dining Area	7
Galley & Laundry Equipment	7
Master Stateroom, Amidship	8
VIP Guest Stateroom, Forward	9
Queen Guest Stateroom, Port	9
Twin Guest Stateroom, Starboard	10
Crew Quarters, Aft	11
Pilothouse Equipment	11
Electronics & Navigation Equipment	11
Flybridge Equipment & Tenders	12
Aft Deck Equipment	13
Deck Equipment	13
Safety & Security Equipment	14
Electrical Equipment	14
Engine Room & Mechanical Equipment	14
Comments	15

Исключения	15
Отказ от ответственности	16
ФОТОГРАФИИ	17
КОНТАКТЫ	23
Контактная информация	23
Телефоны	23
Время работы	23
Адрес	23

ХАРАКТЕРИСТИКИ

Обзор

Основная информация

Тип судна: Моторная яхта	Подкатегория: Raised Pilothouse
Модельный год: 2004	Год постройки: 2004
Год обновления: 2017	Вид обновления: Complete new interior refit, new furnishings, new appliances, etc. Hull paint job 2012
Страна: United States	Верх: Hardtop
Открытая палуба мостика: Да	

Размеры

Длина общая: 112' 0" (34.14m)	Длина по ватерлинии: 112' 0" (34.14m)
Ширина: 23' 0" (7.01m)	Макс. осадка: 6' 6" (1.98m)
Длина привального бруса: 112' 0" (34.14m)	

Скорость, вместимость и масса

Крейс. скорость: 18 Kts. (21 MPH)	Дальность на крейсерской скорости: 1400
Макс. скорость: 24 Kts. (28 MPH)	Чистый вес: 208 Pounds
Вместимость воды: 1025 Gallons	Вместимость сточного бака: 600 Gallons
Объем топливного бака: 5500 Gallons	

Размещение

Всего кают: 4

Спальные места: 8

Каюта капитана: Да

Койки экипажа: 4

Корпус и палуба

Материал корпуса: Fiberglass

Дизайнер корпуса: Westport

Дизайнер экстерьера: Jack Sarin

Информация о двигателе

Двигатели: 2

Производитель: MTU

Модель: DDC 16V-2000

Тип топлива: Diesel

ПОДРОБНОЕ ОПИСАНИЕ

Accommodations

SILVER MOON represents one of the nicest, most customized 112' Westports on the market. This vessel has received continuous upgrades over the past few years to include new exterior paint by Rybovich Shipyard in 2014 along with a custom new contemporary interior by Architectural Interiors in 2017. This extensive refit includes all new furnishings, marble / granite countertops, headliner, wallcoverings, wood flooring, carpeting, marble flooring in all baths, along with new galley appliances, soft goods and exterior cushions throughout.

The ever popular 112' Westport offers both elegance and comfort in an open and airy salon with formal dining. Accommodations for (8) guests in four staterooms with en-suite baths and aft crew quarters for (4). The spacious salon with formal dining offers large windows throughout for panoramic views.

The exterior spaces rival the interior with the aft deck for alfresco dining and access to the extended swim platform. The foredeck offers additional seating as well as sun pads for relaxing and catching some rays. The flybridge is a favorite gathering place boasting ample seating, dining, wet bar, sun pads, and Jacuzzi.

Powered by MTU 16V-2000's, she cruises comfortable and economically at 14 knots with a top end speed of 24 knots maximum. She features all the large yacht options to include twin 65KW Generators, Naiad stabilizers, bow thruster, 1200 GPD watermakers along with 18' Novurania and two Yamaha waverunners.

Interior Refit, 2017

The interior completed a refit in 2017 by Architectural Interiors to include the following; Main Salon & Dining Area: - (2) New custom upholstered chenille sofas by Century Furniture - (2) New custom upholstered leather club chairs by Ferrell-Mittman - (2) New Century Furniture chenille upholstered lounge chairs w/walnut trim - (2) New custom ottoman/tables in Eldeman Cowhide & walnut trim - New dining table & end tables by Baker Furniture - New Martini tables by Windsor Smith - Installed custom linen wallcoverings by Holland & Sherry in salon/dining areas - Opened up dining area by removing buffet and columns, creating a clean, airy open space - Custom 4 x 7 artwork with LED back lighting on forward dining bulkhead - New lamps by Chapman - Custom headliner - New custom hard wood flooring with carpet inserts in salon & dining Day Head: - New Vitraform glass sink w/back lighting & fixtures - New Vitraform round wall mirror w/back lighting - Custom Botta Grey marble vanity top Galley: - Redesigned island/bar and added additional storage - New custom quartzite countertop w/ waterfall return to floor with grey & touch of aqua in stone Companionways: - Stairwell/companionway to below deck w/ wood & carpeting flooring - New custom linen wallcovering - Console with new framed mirror by Shagreen Master Stateroom: - Custom Whisper wall panels by Jim Thompson -

Custom upholstered headboard fabric by Donghia - Custom headliner - Custom settee and pillows fabric by Manual Canovas - New light fixtures by Chapman Master His/Her Bath: - Removed existing tub/shower and replaced with new large spa shower with marble bench seat - All new marble vanity tops & marble flooring Guest Staterooms: - All staterooms feature new pleated fabric wallcovering by Maya Romanoff - New custom velvet covered panels by Scalamandre - New custom linens and coverlets by Home Treasures - New light fixtures by Chapman - New marble vanity tops & flooring in all guest baths Exterior: - Custom granite installed on all exterior bar/counter tops - All new exterior cushions with new chenille fabrics by Perennials - Exterior pillows in printed fabrics by Chella

Main Salon & Dining Area

- (2) Custom upholstered chenille sofas, port & stbd ('17)
- (2) Custom upholstered chenille lounge chairs ('17)
- (2) Leather club chairs w/walnut trim ('17)
- (2) Custom upholstered ottoman/table in Eldeman Cowhide & walnut trim ('17)
- (2) Martini tables by Windsor Smith ('17)
- Mahogany wood dining table by Baker Furniture ('17)
- (8) Custom upholstered chenille dining chairs ('17)
- Built-in raised buffets, port & stbd, w/lucite lofted storage for stemware, china & silverware
- Walk-up bar w/recessed burle top & waterfall edge, sink, U-line combo refrigerator/icemaker ('16), glass & bottle storage
- Custom oval soffit in silver leaf w/recessed lighting over dining table
- Panasonic 42" TV recessed in overhead w/ electric lowering remote
- JVC 5-disc DVD, Integra 6-disc CD players, Integra receiver & Savant controls ('17)
- Ipad control system w/ docking stations ('17)
- Custom linen wallcoverings ('17)
- Lighting fixtures by Chapman ('17)
- New headliner ('16)
- Custom hardwood flooring w/ carpet inserts in salon & dining area ('17)
- Hunter Douglas silhouette blinds w/fixed Roman shade valance in custom blind pocket ('17)
- Double glass sliding doors into salon from aft deck
- Large entry door into foyer, starboard side Day Head:
- Vitraform glass sink w/back lighting & custom fixture
- Vitraform mirror w/back lighting ('17)
- Vanity w/ new custom Botta Grey marble top & backsplash ('17)
- Custom wallcovering ('17)
- Headhunter Royal Flush Bravo head ('17)

Galley & Laundry Equipment

- New custom island/bar w/quartzite waterfall return to floor ('17)
- Kitchen Aide stainless steel refrigerator & freezer ('17)
- Dacor oven & range ('16)
- Dacor 5-burner touch cooktop ('16)
- Dacor 30" convection oven ('16)
- GE Profile microwave ('16)
- Bosche dishwasher ('17)
- Cherry cabinetry w/ new quartzite countertops
- Built-in U-shaped dinette w/leather upholstery ('17) & corian table
- Custom wood flooring w/carpet inserts ('17)
- Custom wallcoverings ('17)
- Custom headliner ('17)
- Samsung TV mounted on forward bulkhead
- Stainless steel commercial sink (new '17)
- In-Sinkerator disposal
- Broan trash compactor Pantry / Utility Room: (portside companionway)
- Wine Enthusiast wine cooler in pantry
- Miele full size, front load washer & dryer
- Built-in storage locker w/drawers & shelves
- U-line undercounter refrigerator
- 6' 7" headroom

Master Stateroom, Amidship

- Double door entryway w/ Cherry & Madrona burl veneer paneled door
- California King berth w/ upgraded TempurPedic mattress, custom coverlet, bedding & pillows ('17)
- Custom upholstered headboard/bulkhead ('17)
- (2) Built-in cherry nightstands
- (2) Wall sconce light fixtures above nightstands ('17)
- Built-in cherry dresser w/ (16) drawers
- Built-in settee w/custom upholstery ('17)
- (2) End tables w/drawer storage, each side of settee
- (2) Lucite table lamps ('17)
- Custom overhead soffit w/ cherry trim for lighting
- Indirect accent rope lighting below berth & and above soffits
- Walk-in, cedar-lined closet w/automatic light, full length mirror & built-in safe
- Custom Shoji screen sliding panels w/black out shades
- (4) Large, opening portlights w/ screens & privacy covers, port & stbd
- Samsung 45" TV on aft bulkhead ('17)
- Integra receiver & Savant controls ('17)
- New custom carpeting ('17)
- Custom Whisper wall panels ('17)

- New linen wallcovering ('17) His & Her Bath:
- New, oversized marble Spa shower w/ marble bench, Euro style frameless glass doors & Grohe thermostat & silver/nickel finished fixtures ('17)
- Marble top vanities, (2) custom sinks & silver/nickel finish fixtures ('17)
- (4) Mirrored medicine cabinets, lighted vanity mirrors & (2) swing-out vanity stools
- New wallcovering ('17)
- Recessed halogen lighting
- (2) Royal Flush Bravo electric heads ('17)
- Marble flooring ('17)

VIP Guest Stateroom, Forward

- Queen berth w/drawers below, custom coverlet & bedding ('17)
- Custom upholstered velvet headboard/bulkhead ('17)
- Custom overhead soffit w/Shoji screen & cherry trim w/concealed 24" escape hatch
- Custom pleated fabric wallcovering ('17)
- (2) Wall sconce reading lamps, port & stbd ('17)
- Walk-in, cedar-lined closet w/full-length mirror on door
- Built-in cherry wood bookshelves, port & stbd
- Built-in upholstered settee, stbd ('17)
- Built-in cabinetry w/drawers & vanity
- Custom fixed Shoji screens w/back lighting, port & stbd ('17)
- Built-in entertainment center w/ Insignia TV, Integra receiver & Savant controls ('17)
- Sony DVD/CD player & Sony AM/FM stereo receiver w/dual speakers VIP Bath:
- Vanity w/marble countertops ('17)
- Shower w/frameless glass doors & custom fixtures
- Custom sink w/ fixture ('17)
- Custom wallcovering ('17)
- Marble flooring ('17)
- Headhunter Royal Flush Bravo head ('17)

Queen Guest Stateroom, Port

- Queen berth w/drawers below, custom coverlet & bedding ('17)
- Custom upholstered headboard ('17)
- Bronze mirrors on forward bulkhead
- (2) Built-in nightstands w/3 drawers, port & stbd
- Built-in dressers
- (2) Wall sconce light fixtures ('17)
- Custom pleated fabric wallcoverings ('17)
- New custom carpeting ('17)
- New Whisper wall panels ('17)

- New headliner ('17)
- Custom Shoji sliding screens (removable)
- Opening portlights w/screen & privacy cover, port & stbd
- Overhead recessed lighting
- Entertainment center w/Insignia TV, Integra receiver & Savant controls ('17)
- New carpet ('17) Guest Bath:
- Vanity w/new marble countertop ('17)
- Shower w/frameless glass doors & custom fixtures
- Custom sink w/ fixtures ('17)
- Wall mirror ('17)
- Custom wallcovering ('17)
- Headhunter Royal Flush Bravo head ('17)
- Marble flooring ('17)

Twin Guest Stateroom, Starboard

- Twin berths w/drawers below, custom coverlet & bedding ('17)
- Custom upholstered headboards ('17)
- Bronze mirrors on forward bulkhead
- (2) Built-in nightstand w/3 drawers
- Built-in dresser
- (2) Wall sconce light fixtures ('17)
- Custom pleated fabric wallcoverings ('17)
- New custom carpeting ('17)
- New Whisper wall headliner panels ('17)
- New headliner ('17)
- Custom Shoji sliding screen (removable)
- Opening portlights w/screen & privacy cover, port & stbd
- Overhead recessed lighting
- Entertainment center w/ Insignia TV, Integra receiver & Savant controls ('17)
- New carpeting ('17) Guest Bath:
- Vanity w/new marble countertops ('17)
- Shower w/frameless glass doors & custom fixtures
- Custom sink w/custom fixtures ('17)
- Wall mirror ('17)
- Custom wallcovering ('17)
- Headhunter Royal Flush Bravo head ('17)
- Marble flooring ('17) Lower Companionway:
- Custom wood flooring ('17)
- Custom wallcovering ('17)
- Varnished console table
- Decorative wall mirror
- Recessed lighting

Crew Quarters, Aft

Captain's Cabin:

- Full-size berth w/drawer storage below
 - Recessed lighting & reading lights
 - Cedar-lined closet w/full length mirror inside door
 - Built-in dresser, nightstand & bookshelf
 - Captain's desk w/ corian top & chair
 - LG 32" TV
 - New headliner ('17)
 - Private head w/shower w/glass door, Kohler sink, Grohe fixtures, vanity w/corian top & mirrored medicine cabinet
- Crew Quarters:
- (2) Crew cabins, one w/twin berths, one w/single berth
 - Drawer storage, cedar lined hanging locker, recessed lights & reading lights
 - Ensuite head w/ vanity, shower w/glass door, mirror, medicine cabinet & Grohe fixtures
- Crew Galley / Lounge:
- U-shaped upholstered settee w/corian table
 - Sub-Zero 249RP refrigerator
 - GE undercounter upright freezer
 - Microwave oven
 - GE full size washer & dryer
 - Samsung LCD TV, Pioneer stereo, DVD/CD player & Speaker Craft speakers
 - New headliner ('17)

Pilothouse Equipment

- Detroit Diesel electronic engine controls
- Detroit Diesel DDEC panel
- New Whisper wall headliner ('17)
- Chart drawers adjacent to console
- New upholstered settee ('17)
- Crown helm chair
- Desk w/ recessed Madrona burl top
- Sliding hatch to flybridge
- Bronze mirror aft bulkhead
- Built-in bookcase
- Apple computer & monitor

Electronics & Navigation Equipment

- (2) Furuno FAR Radar w/ ARPA & AIS

- (3) Garmin GPS ('12)
- Simrad AP26 Autopilot
- (3) Icom M602 VHF radios
- (2) Loudhailer horns integrated w/ VHF's
- B&G wind /depth/ speed w/ full function VEI display
- Simrad AP26 Autopilot
- CCTV security monitoring system w/ 4 hi-res cameras
- MTU clutch/throttles w/ sync & trolling speed functions
- ACR spotlight remote
- Ritchie Globemaster compass
- KVH mini V-Sat Satcom ('17)
- KVH HD Sat TV system ('17)
- VEI Marine flat screen monitors
- AIS Garmin ('17)
- Direct TV remote satellite receivers

Flybridge Equipment & Tenders

- Hardtop w/ overhead lights on dimmer switch
- Center helm station, port & starboard wing stations w/ electronic engine controls, synchronizer, jog lever, bow thruster control, rudder angle indicator, main engine start and stops & covers
- (2) Crown helm seats w/foot rest & upholstered cushions ('14)
- (2) Custom Scopinch varnished oval cocktail tables
- Built-in bench seating w/storage below & upholstered cushions ('17)
- Wet bar w/sink, granite countertop, U-line refrigerator w/ icemaker & storage
- (4) Pedestal stainless bar stools w/ padded upholstered seats ('17)
- Jenn Air 30" dual grill w/stainless steel lid, auto shut-off switch & storage below
- Tinted windshield w/ polished stainless steel frame
- Multi-zone control panel for music
- Hardtop w/recessed lighting
- Strataglass enclosure w/ roll up zippered inserts
- All new upholstered exterior cushions ('17)
- Clarion AM/FM stereo with CD player and (4) speakers
- Outdoor carpeting ('16)
- Down 3-steps on centerline through polished stainless clear Lexan gates to boat deck Boat Deck:
- Built-in Jacuzzi w/storage below, sun pad cushion & cover
- Settee w/varnished table
- Sunpad lounge
- Nautical Structures davit w/power telescoping hydraulic boom
- Stainless steel handrails
- Tender lifting bridle

- 18' 2012 Novurania w/Yamaha 115 HP
- (2) 2014 Yamaha VXR waverunners

Aft Deck Equipment

- Teak decks
- Built-in aft bench seating w/ cushions
- Custom Scopinich varnished teak dining table
- (6) Varnished teak chairs
- Hardtop w/ overhead recessed lights
- Bar w/ Magic Chef mini refrigerator & Manitowec icemaker
- (3) Summit bar stools
- Bulwark storage lockers, port & stbd
- Stairs up to boat deck
- Samsung 45" TV w/ protective screen ('17)
- (6) Overhead stereo speakers
- Strataglass enclosure w/ roll-up zippered inserts ('18)
- Dual stairs down to teak swim platform w/ hot/cold shower
- Built-in gas tank fuel station for tenders on swim platform
- Access to lazarette, crew quarters & engine room

Deck Equipment

- Freshwater washdown
- Stainless steel guard rails around boat deck
- Keyhole seating w/cushions on foredeck
- Sunpad on foredeck
- Multi-zone sound system
- Side port engine room exhaust
- Air intake for engine room
- Delta T demisters
- Euro-style polished s/s rails around deck
- Stairwell from boat deck to aft deck w/stainless handrail & sliding hatch
- Dual Maxwell 4500 hydraulic anchor windlass
- (2) Maxwell 2200# capstans
- Dual Poole 300lb galvanized anchors
- Chain with 350' x 5/8" chain and anchor chain freshwater
- Polished stainless steel Euro style bow rails
- Polished stainless steel bow flag staff
- Bosun locker on foredeck
- Freeman 24" access to hatch to chain locker
- Multiplex folding passerelle

- Marquipt 7-step boarding ladder

Safety & Security Equipment

- (2) DBC Solas 8-man life rafts
- Nat Satfind 406 GRIB
- (2) Life buoys w/strobe lights & throw lines
- (20) Offshore type 1 Life jackets
- Kahlenberb triple set air horns
- ACR Rapid ditch bag
- CCTV security monitoring system w/cameras
- Hi-Res color cameras w/pan & tilt
- Westport security alarm system

Electrical Equipment

- Twin Northern Lights 65KW generators w/ sound shields
- Atlas power converter
- 12v/24v/110v/240v single phase
- 120/240v output
- (2) 100 amp / 100' shore power cords
- Gel cell batteries for mains & gens
- (4) Phase 3 PT80 battery chargers (new 2018)
- Ships main electrical panel in crew area
- Start/stop panels w/ water temp/oil pressures/ volt meters
- (2) 100 amp isolation transformers w/boost
- (2) 100 amp shore power, 240V, single-phase shore
- Glendenning cblemaster
- Perko navigation lights

Engine Room & Mechanical Equipment

- Twin MTU/DDC 16V-2000's w/power steering & stabilizers pumps
- Twin disc gears 3.00:1 ratio
- Marine Air 15-ton chilled water A/C system (new 2018)
- (17) Marine Air handlers throughout vessel ('16)
- Wesmar 16" bow thruster, 60HP
- Naiad 353 stabilizers w/9' sq fins
- (2) Sea Recovery 1200 GPD Watermakers (1 rebuilt, & 1 new in 2018)
- Jastram power steering w/dual engine driven pumps
- (8) 24v electric bilge pumps, 120v AC pump

- (2) Headhunter Mach 5 water pumps
- (2) Sea Pro 51 fuel separators
- Edison 600 gallon sewage system
- Fresh oil tank, 60 gal / 50 gal used oil tank
- Aquamet 22 shafts w/dripleless seals
- Hot water heater 120 gallon quick recover 240v/208v
- DDEC engine start & display
- Fuel transfer pump 110v w/timer & meter
- Emergency bilge system
- (2) 110v Bilge pumps w/manifold system
- Auto fuel priming pumps for mains & gens
- Engine room exhaust blower system
- Fire system FM200
- Brownies compressor in lazarette

Comments

SILVER MOON represents one of the most highly customized 112' Westport on the market! This vessel has received continuous upgrades over the past few years to include complete exterior paint by Rybovich Shipyard in 2014 along with a refit in 2017 to include a new contemporary interior by Architectural Interiors. This extensive refit includes all new furnishings, upholstery, headliner, wallcoverings, wood flooring, carpeting, marble flooring, marble and granite countertops, new galley appliances and soft goods throughout.

This ever popular 112' Westport layout offers both elegance and comfort in an open and airy salon with formal dining. Accommodations for (8) guests in four staterooms with en-suite baths and aft crew quarters for (4). The spacious salon with formal dining offers large windows throughout for panoramic views.

The exterior spaces rival the interior with the aft deck for alfresco dining and access to the extended swim platform. The foredeck offers additional seating as well as sun pads for relaxing and catching some rays. The flybridge is a favorite gathering place boasting ample seating, dining, wet bar, sun pads and Jacuzzi.

Powered by MTU 16V-2000's, she cruises comfortable and economically at 14 knots with a top end speed of 24 knots maximum. She features all the large yacht options to include twin 65KW Generators, Naiad stabilizers, Wesmar bow thrusters, (2) 1200 GPD Sea Recovery watermakers plus 18' Novurania tender and Yamaha waverunners. SILVER MOON is truly maintained to impeccable condition! Exclusions: All Owners & crew's personal items

Исключения

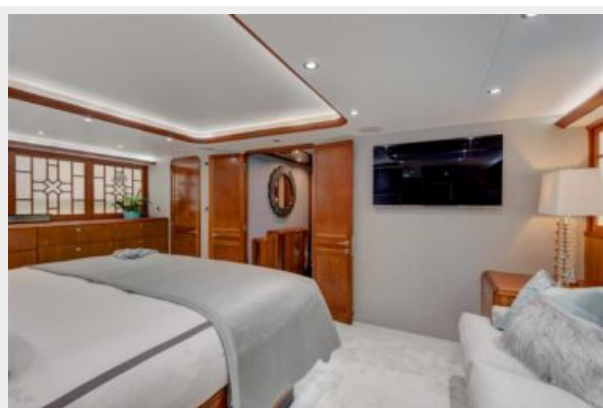
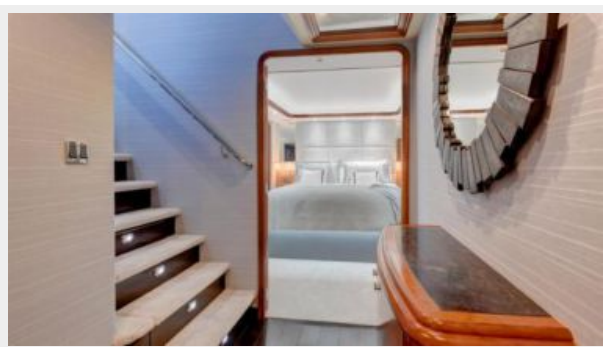
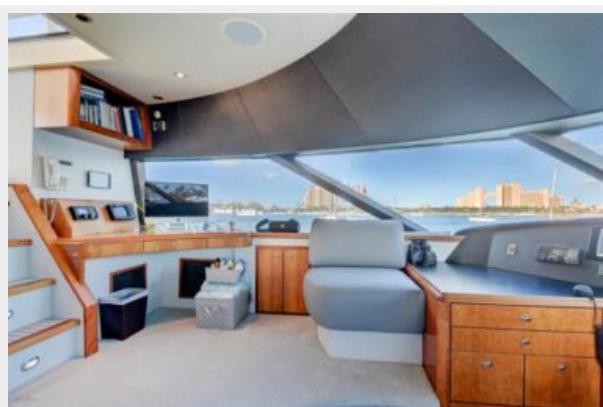
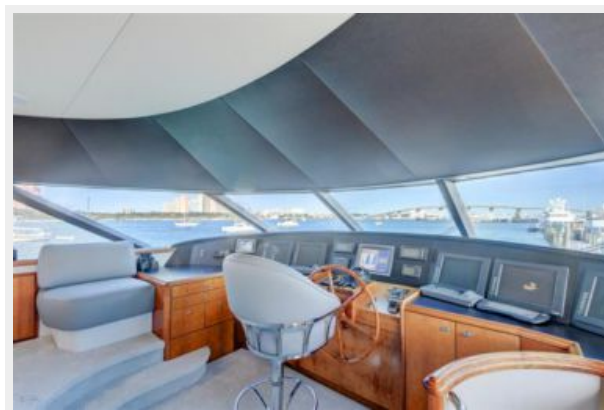
При продаже яхты исключаются личные вещи владельца.

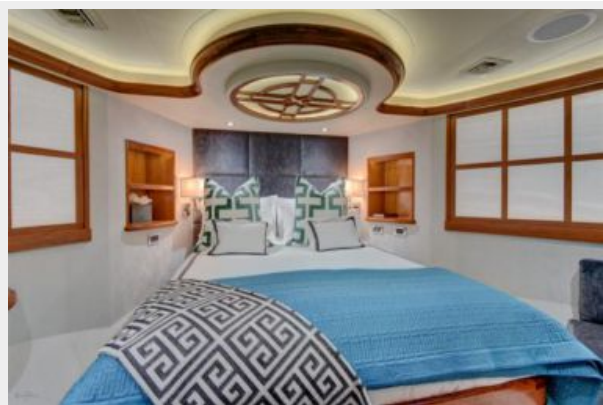
Отказ от ответственности

Компания предоставляет описание судна или яхты добросовестно, но не может гарантировать точность этой информации, а также не ручается за техническое состояние. Покупатель должен проинструктировать своих агентов или оценщиков исследовать представленную информацию более подробно, по собственному желанию. Продажа судна или яхты, изменение цены или снятие с продажи будет происходить без предварительного уведомления.

ФОТОГРАФИИ

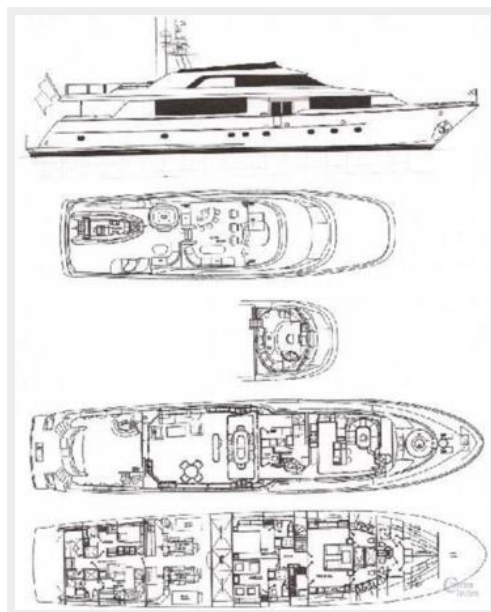












КОНТАКТЫ

Андрей Шестаков (Andrey Shestakov) – ведущий яхтенный брокер отдела продаж яхт и судов компании Shestakov Yacht Sales Inc. Официальный представитель Shestakov Yacht Sales Inc. для русскоговорящих клиентов в центральном офисе компании в Майами/Форт Лодердейл/Флорида/США.

Контактная информация

Email: andrey@shestakovyachtsales.com

Web: shestakovyachtsales.com

Телефоны

Краснодарский край: **+7(918)465-66-44**

США, Майами, Флорида: **+1(954)274-4435**

Время работы

Понедельник – Суббота: **9:00 - 21:00**
EDT

Воскресенье: **Закрето**

Адрес



Harbour Towne Marina, 850 NE 3rd St,
STE 213, Dania, FL 33004