

MY MAGGIE — WESTPORT



Судостроитель: WESTPORT

Год постройки: 2008

Модель: Моторная яхта

Цена: **ЦЕНА ЯХТЫ ПО ЗАПРОСУ**

Местонахождение: United States

Длина общая: 112' 0" (34.14m)

Ширина: 23' 9" (7.24m)

Макс. осадка: 5' 6" (1.68m)

Крейс. скорость: 21 Kts. (24 MPH)

Макс. скорость: 24 Kts. (28 MPH)

Купить **MY MAGGIE — WESTPORT** а также выбрать подходящую вам яхту из нашего каталога яхт вам поможет опытный яхтенный брокер Андрей Шестаков. На сегодняшний день компания **Shestakov Yacht Sales Inc.** имеет большое количество яхт в собственном списке продаж, а также тесно сотрудничает со всеми крупными яхтенными производителями по всему миру.

Для того чтобы купить яхту **MY MAGGIE — WESTPORT** а также проконсультироваться по любому вопросу связанному с покупкой, продажей, чартером яхт позвоните по телефону **+7(918)465-66-44**.

ОГЛАВЛЕНИЕ

ОГЛАВЛЕНИЕ	2
ХАРАКТЕРИСТИКИ	6
Обзор	6
Основная информация	6
Размеры	6
Скорость, вместимость и масса	6
Размещение	7
Корпус и палуба	7
Информация о двигателе	7
ПОДРОБНОЕ ОПИСАНИЕ	8
Walkthrough	8
Upgrades & Features	9
Aft Deck	9
Salon	10
Formal Dining	10
Day Head	10
Galley	11
Pilothouse	11
Electronics	11
Master Stateroom	12
Master Head	12
VIP Stateroom / Forward	13
VIP Head	13
Mid Guest Foyer	13
Guest Stateroom / Port	14
Guest Head / Port	14
Guest Stateroom / Starboard	14
Guest Head / Starboard	15

Captain's Quarters	15
Crew Quarters	15
Crew Lounge	16
Fore Deck	16
Flybridge / Boat Deck	16
Electrical Equipment	17
Plumbing	18
Safety & Fire Protection	18
Miscellaneous Equipment	19
Mechanical Equipment	19
Toys	20
Exclusions	20
Исключения	20
Отказ от ответственности	21
ФОТОГРАФИИ	22
Aft Deck	22
Aft Deck / Dining	22
Aft Deck / Bar	22
Aft Deck	22
Aft to Salon	22
Salon	22
Salon	23
Salon	23
Salon / Game Table	23
Dining	23
Dining	23
Day Head	23
Galley	24
Galley	24

Galley / Dinette	24
Pilothouse	24
Pilothouse / Helm	24
Pilothouse / Seating	24
VIP Stateroom	25
VIP Head	25
Foyer to Master Stateroom	25
Master Stateroom	25
Master Stateroom	25
Master Head	25
Master Head	26
Foyer to Guest Staterooms	26
Guest Stateroom / Starboard	26
Guest Head / Starboard	26
Guest Stateroom / Port	26
Guest Head / Port	26
Pilothouse	27
Flybridge	27
Flybridge / Helm	27
Flybridge / Helm	27
Flybridge / Bar	27
Flybridge / Bar	27
Flybridge / Seating	28
Flybridge / Seating	28
Sundeck	28
Hot Tub	28
Hot Tub	28
Boat Deck / Settee	28
Sundeck / Seating	29

Boat Deck	29
Aerial Drone Shot	29
Sun Deck / Boat Deck	29
Aerial Drone Shot	29
Transom View	29
Aft View	30
КОНТАКТЫ	31
Контактная информация	31
Телефоны	31
Время работы	31
Адрес	31

ХАРАКТЕРИСТИКИ

Обзор

Preliminary Specs - 9/2018 “MY MAGGIE” has been privately owned and operated since new. She has been well cared for by her owners. She was delivered in June 2008 being one of the last 112’s Westport delivered in 2008. Access to “MY MAGGIE” is typically from the starboard entrance doors which take you forward into the galley or aft into the Salon/Dining area. Going aft into the Salon/Dining there is a dining table with seating for eight with storage port & starboard for dining settings and flatware. The Salon is aft of Dining with over-sized windows for panoramic views.

Основная информация

Тип судна: Моторная яхта

Подкатегория: Raised Pilothouse

Модельный год: 2008

Год постройки: 2008

Год обновления: 2015

Страна: United States

Открытая палуба мостика: Да

Размеры

Длина общая: 112' 0" (34.14m)

Ширина: 23' 9" (7.24m)

Макс. осадка: 5' 6" (1.68m)

Скорость, вместимость и масса

Крейс. скорость: 21 Kts. (24 MPH)

Макс. скорость: 24 Kts. (28 MPH)

Водоизмещение: 275000 Pounds

Вместимость воды: 1025 Gallons

Вместимость сточного бака: 600 Gallons Объем топливного бака: 5500 Gallons

Размещение

Всего кают: 4

Спальные места: 8

Всего ком. состава: 6

Каюта капитана: Да

Каюты экипажа: 3

Койки экипажа: 5

Корпус и палуба

Материал корпуса: Fiberglass

Материал палубы: Teak

Комплектация корпуса: Modified V-Hull

Дизайнер корпуса: Jack Sarin

Дизайнер экстерьера: Taylor Olson

Дизайнер интерьера: Westport

Информация о двигателе

Двигатели: 2

Производитель: MTU

Модель: V16 2000 M91

Тип двигателя: Inboard

Тип топлива: Diesel

ПОДРОБНОЕ ОПИСАНИЕ

Walkthrough

"MY MAGGIE" has been privately owned and operated since new. She has been well cared for by her owners. She was delivered in June 2008 being one of the last 112's Westport delivered in 2008.

Access to **"MY MAGGIE"** is typically from the starboard entrance doors which take you forward into the Galley or aft into the Salon/Dining area.

Going aft into the Salon/Dining area you will see a dining table with seating for eight with storage port & starboard for table settings and flatware.

The Salon is aft of the Dining with over-sized windows for panoramic views.

The Salon was recently re-decorated with an L-shaped sofa and three large occasional chairs and a large Samsung 55" Smart TV was installed several years ago and recently updated Kaleidescape Movie System; the overhead has an oval wood appointment.

The Aft Deck is accessed from the Salon through large glass sliding doors, a walk-behind bar with granite top and three large bar stools make for a casual entertaining area and the Aft Deck dining table all the way aft with seating for eight. The Aft Deck overhead has an upgraded high-gloss treatment.

The Country Kitchen is located forward on the main deck with new appliances, an upgraded Amtico Wood Teak + Holly flooring done on a diagonal pattern. The large U-shaped seating area offers the maximum seating with two occasional chairs that can be swung over from the Galley counter to fill in at the settee.

Forward of the Galley and down is the secluded VIP Stateroom with a queen size walk-around bed and an en-suite head.

The Master Stateroom and the Guest Staterooms are located from the port Foyer and down a set of stairs to the lower Foyer.

Entrance to the Master Stateroom is through double doors and is located at the widest part of the vessel. The Master bed is a California King with a full array of drawers to starboard and a large walk-in cedar-lined closet, along with a love seat to port. Forward of the Master bed is the his + hers head with a shower in the middle.

The Guest Stateroom to port features a walk-around queen size berth and an en-suite head.

The Guest Stateroom starboard features twin berths, which can be put together to make a king bed, against the outboard wall; it offers an en-suite head as well.

The Crew Quarters are all the way aft on the lower deck accessed from the Aft Deck via a staircase of aft transom Pantograph door. The Crew Quarters offer berths for 4-5 crew in three staterooms with the Captain's Cabin featuring a queen berth and en-suite head. The 2nd and 3rd Crew Staterooms share a Jack + Jill head.

Upgrades & Features

- (2) ASEA ELECTRICAL POWER CONVECTORS (EUROPEAN/US POWER) SERVICED IN AUGUST 2018
- SEAMLESS TRANSFER
- 16'5" ZODIAC MEDLINE WITH YAMAHA 70 (2017)
- TEAK ON AFT DECK AND FLYBRIDGE
- BOW & STERN THRUSTER
- NEW INTELLISEA (VESSEL INFORMATION CONTROL) (2017)
- NEW MAINFRAME WITH REPROGRAMMED SOFTWARE
- AFT CLEATS REINFORCED FOR TOWING
- UPGRADED CAPTAIN'S BERTH
- AFT DECK SETTEE TEAK CAP RAIL
- NEW HELM MONITORS - GREEN MARINE 2017 + 2018 WITH NEW COMPUTER AND PROGRAM UPGRADED & UPDATED AUDIO/VIDEO THROUGHOUT
- TV REMOTE CONTROLS (10 EACH IPAD MINI/CRESTRON TV CONTROLLERS)
- SEADOO SPARKS 3UP 2016 (2 EACH, MOUNTED IN CRADLES ON BOAT DECK)
- CREW LAZERETTE – DIVE TANK COMPRESSOR REMOVED AND SHELVES INSTALLED FOR EXPANDED UTILITY STORAGE
- KVH HD11 – HD TV SATELLITE RECEIVER (REPLACES SEA TEL 3004 SATELLITE TV SYSTEM) 2013
- DIRECTV HD DVR RECEIVERS (9 EACH, REPLACES STANDARD DEFINITION TV RECEIVERS IN
- ALL GUEST AREAS)
- HD TV UPGRADES (6 EACH):
- SALON 55" SAMSUNG SMART LED TV
- GALLEY 50" SAMSUNG SMART LED TV
- MASTER 46" SAMSUNG SMART LED TV
- AFT DECK: 39" SAMSUNG SMART LED TV
- CAPTAIN: 40" SAMSUNG SMART LED TV
- CREW LOUNGE: 36" SAMSUNG SMART LED TV
- (3) SONY TV'S IN GUEST STATEROOMS (2017)
- LIFE RAFTS MOUNTED IN RAILINGS
- STAINLESS STEEL ANCHORS
- NEW KALEIDESCAPE DRIVE 2016 WITH 300-400 MOVIES

Aft Deck

- Aft Deck Bar: Ice-maker, refrigerator, marble top sink with hot and cold water, bar storage with bar ware in portside bulwark
- Aft Deck Furniture: Molded-in settee with cushions, teak hi/low dining/cocktail table which has adjustable (Hi/Lo) base height, six teak dining chairs, and three teak bar stools (all teak is high gloss)
- Storage lockers located in bulwarks
- Spiral staircases to sundeck crew quarters
- Teak Cap Rail high gloss
- Stainless Steel aft deck supports
- 39" Samsung Smart LED TV with TV Remote control (iPad Mini/Crestron TV controllers)
- Aft Deck ceiling painted in high gloss

Salon

- L-Shaped sofa
- (3) Occasional chairs
- Cocktail table
- End tables
- Game table with two chairs to starboard
- Media storage
- Silhouette blinds with fixed Roman shade valance in custom blind pocket (Vertiglide blinds in aft Salon)
- Large 4-panel polished stainless steel sliding door
- Salon 55" Samsung Smart LED TV with surround sound speaker system with sub-woofer, satellite receiver, 2015
- DVD/CD player (iPad Mini/Crestron TV controllers)

Salon Bar:

- Walk-up bar with combo refrigerator/ice maker and storage
- Bar top has recessed burl top, cherry waterfall edge and inlaid stone
- Polished stainless steel round sink and chrome faucet

Formal Dining

- Cherry veneered Dining table top and base with eight chairs
- Mirror on forward bulkhead, flanked by wood detail port and starboard

Day Head

- Headhunter Royal Flush Hydro Vac
- Mirrored overhead

- Vanity light
- Marble vanity top
- Jado Oriental gold finish accessories
- Marble tile flooring and wainscoting

Galley

- Stainless Kohler extra deep sink
- Cherry cabinets throughout Galley
- Dinette settee and dining table with built-in storage
- Granite countertops with waterfall edge
- 48" Kitchen Aid Refrigerator with new wood panels
- Dacor 5-Burner Touch Top Cooktop
- Dacor 30" Convection Oven
- GE Microwave/Vent Hood (New 2018)
- Trash Compactor
- Hot Water dispenser
- Dishwasher
- Sink disposal
- Faux wood flooring throughout
- 50" Samsung Smart LED TV (iPad Mini/Crestron TV controllers)

Pilothouse

- Customized storage below pilothouse helm seat
- Helm station wheel 24" wooden Destroyer type
- MTU Integrated Control Head Engine Controls
- DDC/MTU Engine Instrumentation
- Stidd Low Back helm chair
- Desk with Burl veneer top, solid cherry waterfall edge and stool
- Sliding hatch to Flybridge
- Recessed laminate counter top with cherry waterfall edge
- Bronze mirror aft bulkhead
- Built-in bookcase
- HVAC with liner slot diffusers in Soffit and overhead
- Windshield with mesh sunscreen cover
- Plath Clock/Barometer

Electronics

- KVH Fleet 33 Satellite Telephone (Not in service)

- (2) Furuno FAR2117 radars with 19" LCD display and repeater on Flybridge
- Tellular Cellular Phone System
- Furuno FCV1200BBP Depth Sounder with 15" LCD Monitor
- Furuno GP90D GPS in Pilothouse and Flybridge
- Nobeltec Times Zero Pro
- (1) Green Marine Monitor (2018)
- KEP Marine Monitor (2018)
- Radios: (a) VHF – Three ICOM M602 VHR radios, (2) in Pilothouse and (1) on Flybridge (b) VHF –
- Raytheon 53 VHF radio installed in tender and (c) SSB – Furuno FS – 1503
- (2) Loud hailer horns, integrated with VHF radios
- B&G Wind, Depth and Speed with HS2000 full function display
- Simrad AP50 Autopilot System in Pilothouse and on Flybridge
- IntelliSea Model IS1 (VIC) Security System
- Camera System: Elbex 12V DC hi-resolution color, fixed camera on the aft deck, port and starboard side decks, and full pan zoom tilt camera in the engine room
- Aigean Wi-Fi Booster new in 2017 with Peplink Router, which switches to Cellular
- G.P.I.R.B: Northern Airborne Technology NAS1520
- Aft Depth Sounder: ST 60 Digital Depth Sounder location in Captain's Quarters
- Flybridge monitors KEP Marine (New 2017)

Master Stateroom

- California King Berth, upholstered headboard
- (2) Nightstands with drawer
- Settee to port with two end tables
- 15-Drawer dresser
- Lighting: recessed Halogen room lights, two reading lights, two table lamps for end tables, indirect rope accent rope lighting under berth and above soffits, special lighting outboard at hull side behind roman blinds, and overhead lights (rope lights) above berth
- Bronze mirrors on bulkhead above headboard
- Walk-in wardrobe, cedar-lined with automatic light
- Digital safe in walk-in closet
- Roman shade and blind
- Opening port lights with screens and privacy covers
- 46" Samsung Smart LED TV with surround sound (iPad Mini/Crestron TV controllers) - 2015

Master Head

- (2) Headhunter Royal Flush Hydro Vac Toilets
- Marble shower with Grohe thermostat and two Grohe fixtures, Tempered translucent glass

partition between tub & shower, Eurostyle frameless tempered glass doors and chrome latches

- Kohler whirlpool tub with waterfall spout and Jado Oriental tub handles, silver nickel/gold finish (tub surround and pillars fauxpainted to match marble)
- (2) Kohler vintage sinks with Jado Oriental fixtures (silver nickel/gold finish)
- (2) Mirrored medicine cabinets, lighted makeup mirrors above each vanity, also includes two free-standing vanity stools and fixed mirrors on forward bulkhead
- Recessed Halogen room lights and vanity lights
- Marble tile flooring
- Marble counters with waterfall edge
- Linen lockers port and starboard

VIP Stateroom / Forward

- Queen berth, upholstered headboard, and the bunk rail lifts up on gas springs to storage below (the cherry pedestal is recessed for rope lighting and has a single drawer)
- (2) Built-in bookcases at headboard
- Vanity/desk
- Soffit for lighting
- Recessed Halogen room and reading lights (indirect rope accent lighting under berth and above Soffit) Bronze mirrors on forward bulkhead above headboard
- Walk-in wardrobe, lined with aromatic cedar, light, cedar shelf with keep and clear full-length mirror
- 24" hatch over berth
- Entertainment center Cabinet in stairwell locker
- Custom upholstered settee
- New Sony Smart TV with satellite receiver, DVD/CD player, one pair of speakers, Crestron 2-Way Touch Panel Control and UPS battery back-up

VIP Head

- Headhunter Royal Flush Hydro Vac Toilet
- Custom molded fiberglass shower with EuroStyle frameless tempered glass door and Grohe fixtures and sealed shower light
- Bates & Bates Teri sink with Jado Oriental fixtures, silver nickel / gold finish
- Vanity with framed mirror above
- Linen Cabinet
- Recessed Halogen room lights and vanity lighting
- Marble counters with waterfall edge

Mid Guest Foyer

- Overhead mirror bronze with Cherry trim
- Marble tile flooring
- Luggage storage: Guest stairs have lift-up section to allow for storage

Guest Stateroom / Port

- Queen berth, upholstered headboard
- (2) 3-Drawer nightstands
- 5-Drawer dresser
- Recessed Halogen room and reading lights, indirect rope accent lighting under berth and above Soffit
- Bronze mirrors on aft bulkhead above headboard
- Wardrobe lined with cedar, automatic light
- Roman shade and blind
- Opening Port lights with screen and privacy cover
- Entertainment center with Cherry doors and 5-drawer dresser below
- Sony Smart TV with satellite receiver, DVD/CD player, one pair of speakers, Creston 2-Way Touch Panel Control and UPS battery back-up

Guest Head / Port

- Headhunter Royal Flush Hydro Vac Toilet
- Custom molded fiberglass shower with Eurostyle frameless tempered glass doors with chrome doors with chrome latch and Grohe fixtures (sealed shower light)
- Kohler Vintage sink with Jado Oriental fixtures silver nickel/gold finish
- Vanity with wall mirror above
- Recessed Halogen room lights and vanity lighting
- Marble counters with backsplash, with waterfall edge

Guest Stateroom / Starboard

- Twin berths and upholstered headboard
- (1) 3-Drawer movable nightstand
- Recessed Halogen room and reading lights (indirect rope accent lighting under berth and above soffit), bronze mirrors on aft bulkhead above headboard
- Aromatic cedar-lined wardrobe, with automatic light, closet rod, cedar shelf with keeper and clear full-length mirror on outside wardrobe door
- Roman shade and blind
- Port lights opening with screen and privacy cover
- Entertainment center with cherry doors and 5-drawer dresser below
- 23" LCD TV with satellite receiver, DVD/CD player, one pair of speakers, Crestron 2-Way

Touch Panel Control and UPS battery back-up

Guest Head / Starboard

- Headhunter Royal Flush Hydro Vac Toilet
- Custom molded fiberglass shower with Eurostyle frameless tempered glass doors with chrome latch and Grohe fixtures (sealed shower light)
- Kohler Vintage sink with Jado Oriental fixtures, silver nickel/gold finish
- Wall mirror above vanity
- Recessed Halogen room lighting and vanity lighting

Captain's Quarters

- Queen size berth
- Captain's built-in clock shelf
- Desk with solid surface top, includes stool
- Dresser
- 40" Samsung Smart LED TV (iPad Mini/Crestron TV controllers) Upper cabinet above berth

En-suite Head:

- Galley Maid, freshwater plumbed and discharged into holding tank
- Shower: Custom molded fiberglass with tempered glass doors and Grohe fixtures (sealed shower light)
- Kohler Bolero sinks with Grohe fixtures
- Vanity and medicine cabinet
- Lighting: Low voltage recessed room lights and vanity lighting

Crew Quarters

- (1) Berth with twin berths (over/under)
- (1) Berth twin
- 15" LCD TV with satellite receiver, one pair of speakers and Handheld Creston remote

Shared Head:

- Toilets: Galley Maid, freshwater plumbed and discharged into holding tank
- Shower: Custom molded fiberglass with tempered glass doors and Grohe fixtures (sealed shower light),
- Kohler Bolero sinks with Grohe fixtures, vanity and medicine cabinet
- Lighting: Low voltage recessed room lights and vanity lighting

Crew Lounge

- Entertainment center
- 36" Samsung Smart LED TV (iPad Mini/Crestron TV controllers), DVD/CD player and (1) pair of speakers
- Galley upper and lower cabinets
- Upholstered settee
- Solid surface table top
- Built-in refrigerator
- Microwave
- (2) Upright under counter freezers, plus 3rd freezer (2017)
- Washer and dryer (New 2015)

Fore Deck

- Bow Sun Lounge with vinyl cushions and covers
- Keyhole Settee molded with cushion and cover
- Locker: 110 Outlets inside with lights
- (1) Pair of speakers
- Handheld Waterproof Crestron Remote
- (2) 300 pound Poole style stainless steel anchors (Port: 300' of 5/8 galvanized steel anchor chain. Starboard: 400 of 5/8 galvanized steel anchor chain)
- Anchor Windlass is Maxwell 4500 pound Hydraulic with gypsies, capstans, band brakes and clutches, all serviced and rebuilt (2017)
- (2) 300 Lb. Poole stainless steel anchors, both with 300' chain

Flybridge / Boat Deck

- Wet Bar: Solid surface white sink and granite countertop, TV jack, icemaker under bar, refrigerator near BBQ, 30" grill with hood and cover, and (4) bar stools
- Davit: Hydraulic powered Nautical Structures crane and a 2,000 lb. load capacity
- Removable chocks for tender
- Stainless Steel Rails around Boat Deck
- (2) Stidd Low Back Helm Chairs
- Kahlenberg Air Horn, with 1/2" air strainer
- Hot Tub: molded-in spa with sun pad top and storage below
- Sun Pad with cushions and covers
- Settee: Molded settee with cushions and hinged seating for storage below on Flybridge
- (2) Teak Tables, high-gloss
- Stainless steel table bases
- Stern Flagstaff
- Port and starboard wing stations with full controls

- Standard Hardtop
- Teak decking (under Hardtop area)
- Teak table at settee with stainless steel table base
- (2) Pair of speakers
- Waterproof Crestron Remote

Electrical Equipment

Vessel Information Control System: IntelliSea Model IS1 Vessel Information and Control (VIC) system displayed on 15" LCD Monitor in Pilothouse and 3" LCD Panel view touch pad at starboard entry and Crew Galley/Lounge Items on safety control panel as follows: A) All (8) bilge switches monitored for water detection (2) gray water pumps monitored for operation Gray Water boxes have alarms on backup pumps Black water tank alarmed at 75% and 98% full levels B) (14) Heat sensors: (6) in Crew Quarters, Captain's Quarter's, Engine Room and Crew Lounge, (3) in Forward Guest Stateroom and Guest Staterooms, (3) in Galley, Salon and Master, (2) in Pilothouse and Doghouse C) (13) Smoke alarms: (5) in Crew Quarters, Captain's Quarters, and Crew Lounge, (3) in Forward Guest Stateroom and Guest Staterooms, (3) in Galley, Salon and Master Stateroom, (2) in Pilothouse and Doghouse D)(4) CO Alarms in Crew Staterooms, Captain Stateroom and Crew Galley E) Security System: Aft door, crew door, salon door, port and starboard doors, Flybridge hatch, and forward Guest Stateroom hatch monitored for unauthorized entry F) Control of AC supply switching from all available sources with Volts, Line 1/Line 2 Amps & KW monitored for each generator G) Tank levels monitored - (3) fuel tanks and (2) fresh water tanks H) Flybridge grill lid closed alarm

- Batteries: All AGM cell type batteries (2) banks of (2) 8D, 225 amp batteries, wired in series for starting main engines (total of 4) and (2) 8D, 225 amp batteries, (1) for each generator starting. (1) 24V DC for ship's service bank, (1) 40 amp 24V DC for main engine bank and (1) 40 amp 12V DC for generator bank
- Battery Chargers: Chargers include (1) 70 amp 12V DC for electronics, (1) 95 amp 24V DC for ship's service bank, (1) 40 amp 24V DC for main engine bank and (1) 40 amp 12V DC for generator bank
- (3) King heater/defrosters on Pilothouse console
- (3) 12V Red DC chart lights: (one at navigator's area, one at captain's desk, and one at dash flat over stairs to Main Deck)
- (1) Ritchie Globe Master F600 in Pilothouse, one B&G display on Flybridge
- Exterior Lighting: the Foredeck, house sides, Aft Deck stair and Flybridge overhead lights are all controlled form the Pilothouse switch bank (the Aft Deck Lights are switched locally)
- Isolation Transformer: (2) 100 amp WestportAcme/WPSY isolation transformers with one step automatic voltage adjustment
- Lighting protection with hull Dyna plate and lighting antenna
- Reading Lights: All staterooms have 110V reading lights and 110V receptacles for table lamps
- Recessed Halogen light fixtures

- Indirect Lighting 24V DC and 110V AC rope lighting
- (1) Carlisle Finch 200 Watt Xenon located on mast with dual controls
- Shore Power: (2) 100 amp 240V single phase shore feeds with Glendenning Cablemaster cord reels at port bustle (TV and phone outlet located at port bustle with one 100' TV/phone cord
- Shower Lights: 24V
- Main Distribution Panel: Located in crew area, designed to be functional with all necessary circuit breakers and transfer switches and, to provide proper operation of AC and DC circuits
- General Lighting: Vimar and Leviton receptacle and switching throughout
- Navigation Lights
- Crestron: Audio/Video distribution controlled by Crestron System through wireless controls

Plumbing

- Aluminum water tanks with interior epoxy coating and an approximate tank capacity of 1,000 gallons (VIC monitoring system and sight tube level indicators)
- (2) Sea Recovery SRC AWC 14002 (2,800 gallons per day total) water makers
- (2) AquaPure water filters, serviced 2017 with new membranes and pumps
- (2) 220V AC pumps and one 24C DC backup pressure pump with tank
- Hot Water Heaters: 80 gallon and 38 gallon
- Hot and cold water shower in starboard locker on the Swim Step
- Freshwater wash-down with quick disconnects on Fore Deck, Boat Deck and Aft Deck
- Below Decks Graywater Systems: (2) Graywater boxes fitted with screens, supply and discharge lines for all showers Forward & aft sump tank will have sump pumps and 24V DC back-up pumps
- Holding Tank: Tank is composite with an inspection hatch tank is electronically monitored and has an approximate capacity of 600 gallons Headhunter MSD Treatment with PLC touch screen and AutoChor treats black and grey water

Safety & Fire Protection

- (2) 8-Man Zodiac life rafts mounted in stainless steel rails
- (13) Coast Guard approved adult life preservers with water lights and (6) Coast Guard-approved child life preservers with water lights
- (2) 24" Diameter ring Buoys secured on exterior of vessel
- Fire Extinguisher: Dry chemical type to be installed in suitable locations, (3) 10lb., (5) 5lb. and (6) 2 1/2 lb.
- Flare Kit
- GPIRB

Miscellaneous Equipment

- Boarding Stair: (1) Carbon Fiber 7-Step CQuip Side Boarding Stairs with teak treads, teak handrails on both sides, brackets at port and starboard gates, stowed on starboard bulwark 1 1/2" X 8' with chrome plated hook
- Covers: Sunbrella snap-on covers for Flybridge bar, tables, settee, 4 bar stools, 2 helm chairs, instrument console, shore boat, bow set and Aft Deck seating, and boarding stair in stowed position
- Cushions: Aft Deck settee, bow seat, Flybridge settee and sun pad (Sunbrella fabric cushions with dry fast foam fill)
- Charles smart "Y" 100 Shore Adapters
- Spare Parts: MTU/DDC spare parts kit, Northern Lights spare parts kit, Sea Recovery spare part kit, and Ship spares kit
- Wheel Puller: Built to pull vessel's propellers
- Stern Flagstaff rigged with 1/8" nylon line, and bow jack staff rigged with 1/8" nylon line both rigged per standard yacht practice (courtesy flag halyards on mast)
- Marquipt, manual Passerelle

Mechanical Equipment

- Main Engines: (2) MTU/DDC 16V2000 engines, rated at 2000HP, 4-station MDEC Controls, integrated station selection and shifter control, MDEC synchronizer and underwater exhaust. New injectors and water pumps 2016. Heat exchangers and after cooler serviced 2017 Port /3,700 hrs, Stbd. 3,700 hrs as of 9/2018) 2
- Generators: (2) 65kW 1800RPM Northern Lights with compound mounts, sound shields, InSep (internal water/exhaust separation mufflers) Water temperature, oil pressure and hour meters are installed on main distribution panel in crew quarters (Both generators have remote start/stop in Pilothouse) Port/7,100 hrs Stbd. 7,100 hrs. (as of 9/2018)
- Air Compressor: 220V 2 HP Compressor located in the engine room will operate horn, gasoline tank, and general engine room air supply
- Bow Thruster: American Bow Thruster 16" 40HP hydraulic single prop with 4-station controls
- Stern Thruster: 2015 (New)
- Stern Thruster Gear Box (New 2018)
- Gas Tank: 100 gallon gas tank under hatch on swim step will include an air operated diaphragm pump and fill nozzle
- Fuel Filters: (1) Sea Pro 8 for each main engine and (1)Sea Pro 50 for each generator
- Fuel Gauges: Sight tubes located in engine room and VIC monitoring
- Fuel Transfer System: Fuel Transfer pump will have a flow meter and timer
- Fire Suppression: Engine room has a FM200 fire suppression system with manual/automatic controls additional fire suppression is located on the electrical distribution panel
- Lube Oil Change System: 60 gallon lube oil tank with deck fill, fill spigot, 60 gallon lube oil

waste tank with deck fill, drain spigot, and portable extraction pump with quick disconnects on pump and all engines

- Rudders: Cast urethane foil shape rudders with stainless stocks 7.6 square feet
- Rudder Bearings/Seals: Fiberglass sleeves with Tides bearings, driplless seals, and spare seals in carrier
- Propellers: 48" Michigan Nibral 5-blade custom wheels
- Shafts: 4" Aquamet 22HS, Compleere running gear serviced 2016
- Struts: Cast bronze of Vee design
- Stabilizer System: Naiad model #353 with 9 sq.ft. fins, single station control, with oil level warning, unloading valve kits and dual pumps with gauge kits, seals replaced 2017
- Windshield Wipers/Washers: Exalto windshield wipers with electronic control panel with synchronization and washers for three wipers
- Steering: Jastram power steering with dual engine driven pumps and four steering stations (Pilothouse, Flybridge, and Port&Starboard Wing Stations on Flybridge) Stations include indicator, start/stop buttons and covers
- Air Conditioning: Chilled water system with air handlers in Salon, Pilothouse, Galley, all Staterooms, and Crew Area. New air compressor, #1 2016, all crew air handlers replaced
- Bilge Monitoring: 8 Remote mounted bilge float switches and VIC alarms on all float switches
- Bilge Pumps: Emergency fixed bilge pump system includes two electric 230V AC pumps with 1 ½" PVC lines to each major compartment with check valves, strainers, and priming system

Toys

- Zodiac 16.5 ft. Medline with Yamaha 70 (2016)
- (2) Sea Doo Sparks 3UP (2016)

Exclusions

"MY MAGGIE" is a registered name and does not convey.

Exclusions are to include but are not limited to, all owner's personal items, (3) Existing Stainless Steel Lighted "Name Boards".

A detailed list of exclusions will be provided at the time of sale, upon written request.

Исключения

При продаже яхты исключаются личные вещи владельца.

Отказ от ответственности

Компания предоставляет описание судна или яхты добросовестно, но не может гарантировать точность этой информации, а также не ручается за техническое состояние. Покупатель должен проинструктировать своих агентов или оценщиков исследовать представленную информацию более подробно, по собственному желанию. Продажа судна или яхты, изменение цены или снятие с продажи будет происходить без предварительного уведомления.

ФОТОГРАФИИ

Aft Deck



Aft Deck / Dining



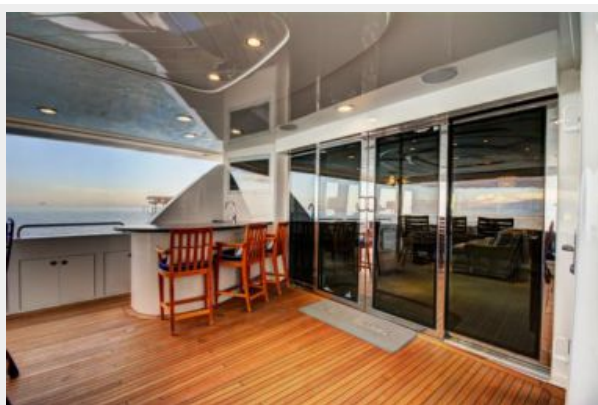
Aft Deck / Bar



Aft Deck



Aft to Salon



Salon



Salon



Salon



Salon / Game Table



Dining



Dining



Day Head



Galley



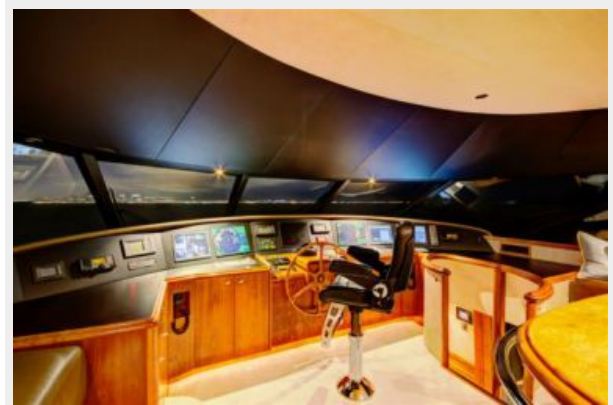
Galley



Galley / Dinette



Pilothouse



Pilothouse / Helm



Pilothouse / Seating



VIP Stateroom



VIP Head



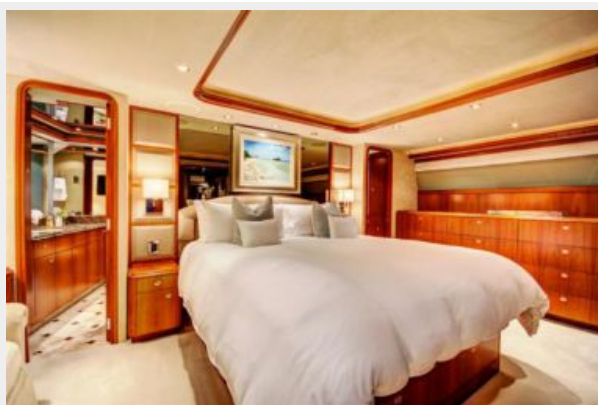
Foyer to Master Stateroom



Master Stateroom



Master Stateroom



Master Head



Master Head



Foyer to Guest Staterooms



Guest Stateroom / Starboard



Guest Head / Starboard



Guest Stateroom / Port



Guest Head / Port



Pilothouse



Flybridge



Flybridge / Helm



Flybridge / Helm



Flybridge / Bar



Flybridge / Bar



Flybridge / Seating



Flybridge / Seating



Sundeck



Hot Tub



Hot Tub



Boat Deck / Settee



Sundeck / Seating



Boat Deck



Sun Deck / Boat Deck



Aerial Drone Shot



Aerial Drone Shot



Transom View



Aft View



КОНТАКТЫ

Андрей Шестаков (Andrey Shestakov) – ведущий яхтенный брокер отдела продаж яхт и судов компании Shestakov Yacht Sales Inc. Официальный представитель Shestakov Yacht Sales Inc. для русскоговорящих клиентов в центральном офисе компании в Майами/Форт Лодердейл/Флорида/США.

Контактная информация

Email: andrey@shestakovyachtsales.com

Web: shestakovyachtsales.com

Телефоны

Краснодарский край: **+7(918)465-66-44**

США, Майами, Флорида: **+1(954)274-4435**

Время работы

Понедельник – Суббота: **9:00 - 21:00**
EDT

Воскресенье: **Закрыто**

Адрес



Harbour Towne Marina, 850 NE 3rd St,
STE 213, Dania, FL 33004