

ISLAND SISTER — HUNTER



Builder: HUNTER

Year Built: 2008

Model: Deck Saloon

Price: PRICE ON APPLICATION

Location: United States

LOA: 45' 0" (13.72m)

Beam: 14' 6" (4.42m)

Max Draft: 5' 0" (1.52m)

Our experienced yacht broker, Andrey Shestakov, will help you choose and buy a yacht that best suits your needs **Island Sister — HUNTER** from our catalogue. Presently, at Shestakov Yacht Sales Inc., we have a wide variety of yachts available on our sale's list. We also work in close contact with all the big yacht manufacturers from all over the world.

If you would like to buy a yacht **Island Sister — HUNTER** or would like help answering any questions concerning purchasing, selling or chartering a yacht, please call **+1(954)274-4435**

TABLE OF CONTENTS

TABLE OF CONTENTS	2
SPECIFICATIONS	3
Overview	3
Basic Information	3
Dimensions	3
Speed, Capacities and Weight	3
Accommodations	4
Hull and Deck Information	4
Engine Information	4
PHOTOS	5
CONTACTS	13
Contact details	13
Telephones	13
Office hours	13
Address	13

SPECIFICATIONS

Overview

Be Sure To Watch The Walk-Through Video! Island Sister is a very well maintained, one owner version of one of Hunters most versatile offerings. Hunters are known for their luxurious interiors and easy to own exteriors. She is very well equipped with twin helms, generator, two newer 16,000 BTU air conditioners, leather upholstery, LED lighting and beautiful custom galley cabinetry. With her three private staterooms and two heads, she is ideally suited for a cruising family or would also make an excellent charter platform. Her owners have moved into their next boat, so Island Sister is seriously for sale. Take a look at the full specs, watch the video, and come see her for yourself. She is a clean and comfortable. She won't last long. Highlights Include: Yanmar 75 HP Diesel (2850 hours- Clean- All Maintenance Records) Fisher Panda 6KW Genset Two 16,000 BTU Air Conditioners (New 2016 and 2017) Full Raymarine Electronics, E80 Plotter, Autopilot, Radar, 4X I70 Displays, Wind, Sirius Weather Electric Secondary Winch Custom Overhead Galley Cabinetry Teak Overlay In Cockpit Redundant Fresh and Salt Pressurized Water System Two Independent Sound Systems. Bose Interior Sound with Subwoofer Electric Heads Sails NEW 2015 Bimini NEW 2015 Bottom Painted Dec 2017

Basic Information

Category: Deck Saloon

Model Year: 2008

Year Built: 2008

Country: United States

Dimensions

LOA: 45' 0" (13.72m)

LWL: 39' 2" (11.94m)

Beam: 14' 6" (4.42m)

Max Draft: 5' 0" (1.52m)

Speed, Capacities and Weight

Water Capacity: 150 Gallons

Holding Tank: 45 Gallons

Fuel Capacity: 65 Gallons

Accommodations

Total Cabins: 3

Total Berths: 3

Total Heads: 2

Hull and Deck Information

Hull Material: Fiberglass

Hull Configuration: Monohull

Engine Information

Engines: 1

Manufacturer: Yanmar

Fuel Type: Diesel

PHOTOS

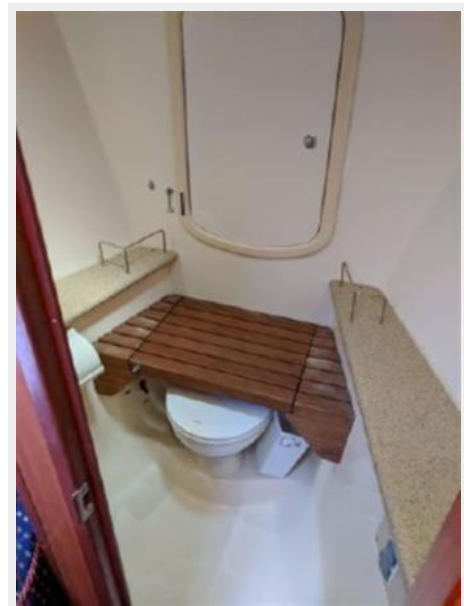
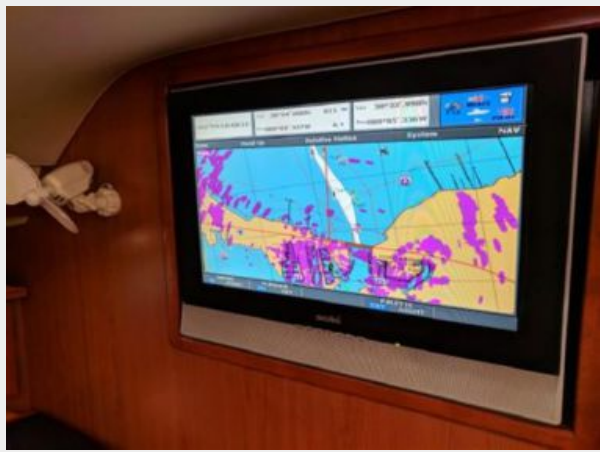


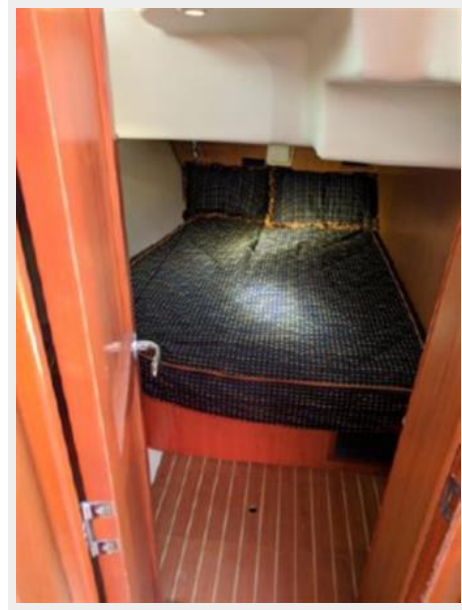
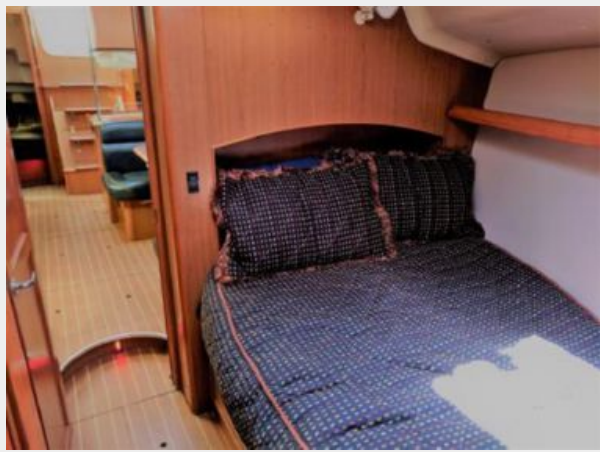


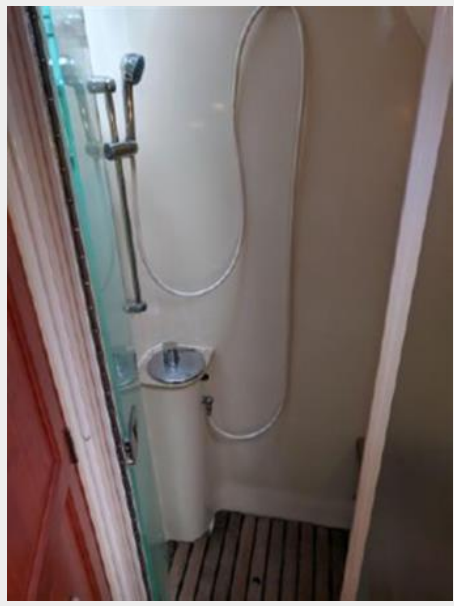












CONTACTS

Andrey Shestakov, leading yacht broker of the sales department of Shestakov Yacht Sales Inc. Shestakov Yacht Sales Inc., the official representative of the Miami/Fort Lauderdale FL headquarters.

Contact details

Email: andrey@shestakovyachtsales.com

Web: shestakovyachtsales.com/en/

Telephones

USA: +1(954)274-4435

Office hours

Monday – Saturday: **9:00 - 21:00** EDT

Sunday: **closed**

Address



Harbour Towne Marina, 850 NE 3rd St,
STE 213, Dania, FL 33004