

57FT 1989 WELLINGTON PILOTHOUSE — WELLINGTON



Builder: WELLINGTON

Year Built: 1989

Model: Pilothouse Cutter

Price: PRICE ON APPLICATION

Location: United States

LOA: 57' 0" (17.37m)

Beam: 14' 5" (4.39m)

Max Draft: 5' 6" (1.68m)

Our experienced yacht broker, Andrey Shestakov, will help you choose and buy a yacht that best suits your needs 57ft 1989 Wellington Pilothouse — WELLINGTON from our catalogue. Presently, at Shestakov Yacht Sales Inc., we have a wide variety of yachts available on our sale's list. We also work in close contact with all the big yacht manufacturers from all over the world.

If you would like to buy a yacht 57ft 1989 Wellington Pilothouse — WELLINGTON or would like help answering any questions concerning purchasing, selling or chartering a yacht, please call **+1(954)274-4435**

TABLE OF CONTENTS

TABLE OF CONTENTS	2
SPECIFICATIONS	5
Overview	5
Basic Information	5
Dimensions	5
Speed, Capacities and Weight	5
Hull and Deck Information	6
Engine Information	6
DETAILED INFORMATION	7
57' Wellington Pilot house cutter	7
Exclusions	11
Disclaimer	11
PHOTOS	12
Galley	12
57' Wellington with swim platform	12
Galley	12
Galley looking aft	12
dining salon looking aft	13
12v drink refridgerator	13
Large capacity refrigeration - freezor	13
Icemaker	13
Port guest stateroom double	14
Dish rack drains overboard	14
Starboard guest stateroom with folding bunk above	14
Port guest stateroom double	14
Starboard guest head joins common shower	15
Starboard guest with folding bunk above	15
Starboard guest with folding bunk	15

View from inside helm	15
Inside helm	16
Inside helm	16
inside watch keeping chair	16
2- generators 12kw - 8kw	17
Salon looking aft	17
Salon looking aft	17
Master centerline walk around berth	17
Master centerline walk around berth	17
Cedar hanging lockers - drawers star.	17
Vanity - desk in master	18
Cedar hanging lockers - drawers port	18
Owner ensuite head - separate shower	18
Water-maker never used	18
Looking aft through workshop to ER	19
Looking forward from engine room	19
Dual Racor fuel filters outside ER	19
Apartment size washer - dryer	19
Generator above main engine	20
Main engine - 8KW generator above	20
Hydraulic power take off for bow thruster headsails & windlass	20
12KW Northern Lights generator to port	20
Northern Lights generator #2 12KW	21
Engine Room looking aft to port	21
Deck	21
Cockpit - Dingy - electric davits	21
Cockpit	22
Cockpit	22
Deck	22

Bow Thruster	22
Outside helm	23
Outside helm	23
On hard	23
Protected Rudder - keel	23
Deck	23
Line Drawing profile	23
At dock	24
Swim platform	24
CONTACTS	25
Contact details	25
Telephones	25
Office hours	25
Address	25

SPECIFICATIONS

Overview

Amazing spacious shoal draft pilothouse motor-sailor custom built by Wellington Yachts for Bill Wellington's personal use with foam flotation.

- Inside-outside helm stations
- Hydraulic Windlass & Bow Thruster
- Hydraulic roller furling genoa & staysail (2 pumps)
- Roll furling main, designed for easy short-handed sailing
- 2 generators, solar, 2 - units air-conditioning
- New watermaker - dingy on davits with electric winches
- Massive tankage Fuel: 1000 gallon - Water: 930 gallon - Holding: 230 gallon

Basic Information

Category: Pilothouse Cutter

Sub Category: Deck Saloon

Model Year: 1989

Year Built: 1989

Country: United States

Dimensions

LOA: 57' 0" (17.37m)

LWL: 50' 0" (15.24m)

Beam: 14' 5" (4.39m)

Max Draft: 5' 6" (1.68m)

Clearance: 63' 0" (19.20m)

Speed, Capacities and Weight

Displacement: 60000 Pounds

Water Capacity: 930 Gallons

Holding Tank: 230 Gallons

Fuel Capacity: 1000 Gallons

Hull and Deck Information

Hull Material: Fiberglass

Engine Information

Engines: 2

Manufacturer: Ford

Engine Type: Inboard

Fuel Type: Diesel

DETAILED INFORMATION

57' Wellington Pilot house cutter

Additional Specs, Equipment, and Information:

Designer: Wellington Design Team

Dimensions

LOA: 57 feet

LWL: 50 feet

Beam: 14.5 feet

Draft 5' 6"

Bridge Clearance: 63 feet

Ballast: 14000-Lbs Displacement: 60000-Lbs

Engines

Single, Ford Lehman 135hp Engine Model: 2725D (hours Unknown)

Tankage

Fuel: 1000 gallon

Water: 930 gallon

Holding: 230 gallon

Accommodations

- Spacious pilothouse with warm, rich, teak woodwork, teak & holly sole, with large opening windows for lots of light great views and ventilation.
- Helm is forward, starboard is an L-shaped settee with teak coffee table, to port are 2 chairs with table, and in the center a unique teak cabinet the houses the TV and provides a base for the helm seat.
- The full galley is down, forward of the pilothouse, with huge L-shaped dinette.
- Two guest staterooms forward with port side stateroom that has a double berth, ensuite vanity, and head, starboard stateroom with upper & lower bunks, ensuite vanity and head. The staterooms share center shower compartment.
- Master Stateroom is aft with island queen berth, cedar-lined hanging lockers, drawer storage, vanity, and ensuite head with separate shower stall.

- On-deck accommodations feature an aft deck horseshoe lounge with table. A solid framed awning provides shade & rain protection. The upper helm is located at the rear of the pilothouse and provides fresh air navigation.

Galley & Dinette The fully equipped galley is located to starboard. Large L-shaped dinette to port.

- Upper & Lower Cabinets
- Custom Spice Racks
- Custom Painted Tile Backsplash Behind Range
- Solid Surface Counter Top
- Stainless Steel Double Sinks
- Built-in Waste Bin
- GalleyMaid Three-burner Range with Oven
- Custom cold plate Refrigerator/Freezer with Water and Air Cooled Compressor
- Additional "dorm sized" refrigerator / Freezer

- Raritan Ice Maker

Electronics There is a full complement of cruising electronics at the pilothouse helm.

- Raytheon RL70RC 48-mile Radar & Chart Plotter
- Garmin Portable 75 GPS
- WH PP2X4 Autopilot
- Datamarine Tri-data - depth, knot & wind
- Two Ritchie Compasses
- Icom M127 VHF Radio with Fog Horn & Hailer
- Stevens SEA 222 SSB
- Satellite Phone System
- Panasonic Color Television
- Audiovox AM/FM/CD/Cassette Stereo
- Audiovox Remote CD Changer

Deck & Hull Designed to go anywhere *FORTY MORE's* bow is reinforced for ice - collision safety and the engine room has a water-resistant door.

- Stainless Steel Deck Rail
- Bow Pulpit with Stainless Steel Anchor Platform with Two Rollers
- 60# CQR Anchor with 380' chain rode
- Fortress Anchor with 20' chain & 400' rode
- Stainless Steel Lighthouse Model 1501 Hydraulic Windlass
- Teak scuff deck in windless area
- Stern-mounted dinghy davits store, launch, and retrieve tender with outboard motor
- Stainless ladder accesses the extended swim platform

Sails & Rigging

Cutter rigged with Profurl hydraulic Genoa and staysail and an EZ furl manual furling mainsail. All controls, sheets, and lines lead aft to the cockpit.

- Deck stepped Anodized aluminum mast and boom with double set of 90-degree spreaders
- Rigging is SS wire 3/16" to 3/8' diameter
- Genoa turning blocks with stoppers
- Profurl hydraulic furling Genoa
- Profurl hydraulic furling staysail
- EZ Furl manual furling mainsail
- (2) Genoa tracks w/cars
- Lewmar 55 winch for fore-stay sheets
- Lewmar 45 winch for halyards
- Lewmar 16 CSTO winch
- All controls, sheets & lines lead to aft cockpit
- Forespar telescoping downwind pole w/deck chocks

Mechanical & Electrical The engine room is large and well equipped with everything easily accessible. The utility room provides a work area as well as washer and dryer.

- Ford Lehman 135-hp Diesel Engine
- Racor Fuel Filters
- Hydraulic Steering
- 12" Hydraulic Bow Thruster
- Clothes Washer and Dryer
- 10-gallon Water Heater
- H&C Pressurized Water System
- Emergency Tiller
- Northern Lights 12 kW Generator
- Northern Lights 8 kW Generator
- 50-amp Shore Power with Cables
- Heart 3000-watt Inverter
- 140-amp Charger
- Three 12v Starter Batteries
- Eight 6v House Batteries

Upgrades by current owner:

2012

Lehman overhaul: new hoses, belts, injector lines, heat exchanger, general refurb

New exterior canopy structure

New isinglass windshield

Generator(s) overhaul

New solar panel installation (630 watts)

New inflatable

New 3.5hp outboard

Honda outboard overhaul

General boat refit (all systems repaired as required)

New oversized anchor and chain and setup overhaul

New chart plotter/radar package for exterior station (to match interior but independent)

New AIS

New day refrigerator

Thru-hull servicing and replacement as required

2013 / 2014

New AGM battery bank (735 amp hours)

New battery monitor

Davit rebuild and reinforcement to handle new dingy with engine

New anchor gypsy and self-launching anchor roller assembly

Hull refurb below waterline including new barrier coat where required and antifouling

Hull refurb above the waterline and new epoxy paint

Toe rail upkeep with Cetol teak

Thruster/windlass hydraulic overhaul including new lines, reservoir refurb, new heat exchanger, pump bracket rework

Main freezer system upgrade, and new refrigeration system for refrigerator

Headsail furler and sail refurb

Mainsail recut and furler refurb, mainsail rigging upgrade including new strut

New macerator pump forward head

New saltwater deck wash down pump

2015

New cutlass bearing, shaft straitening and alignment, stuffing box rebuild, new coupling

Lehman servicing including new head gasket

Generator(s) servicing

Fuel polishing

Swim ladder upgrade

New fresh water pump

New AGM batteries and solar panel controller

New hydraulic fluid heat exchanger and some hydraulic line replacement

2017

New Backup fresh water pump

New exterior VHF

Re-caulking to all hatches

New airconditioning circulation pump

New starting battery for the main engine

Exclusions

Owner's personal belongings.

Disclaimer

The Company offers the details of this vessel or yacht in good faith but cannot guarantee or warrant the accuracy of this information nor warrant the condition of the vessel. A buyer should instruct his representatives, agents, or his surveyors, to investigate such details as the buyer desires validated. This vessel or yacht is offered subject to prior sale, price change, or withdrawal without notice.

PHOTOS

57' Wellington with swim platform



Galley



Galley



Galley looking aft



dining salon looking aft



12v drink refridgerator



Large capacity refrigeration - freezer



Icemaker



Dish rack drains overboard



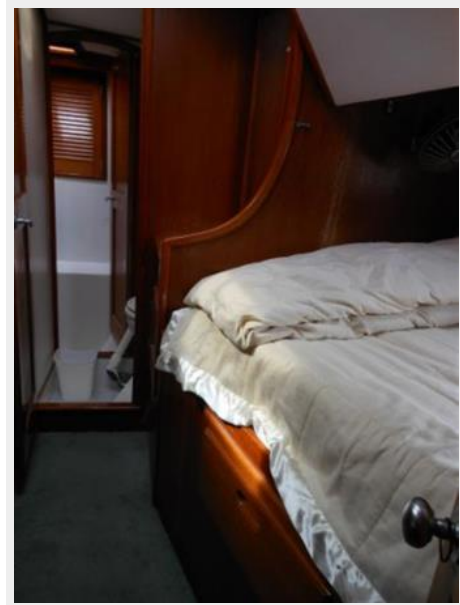
Port guest stateroom double



Port guest stateroom double



Starboard guest stateroom with folding bunk above



Starboard guest head joins common shower



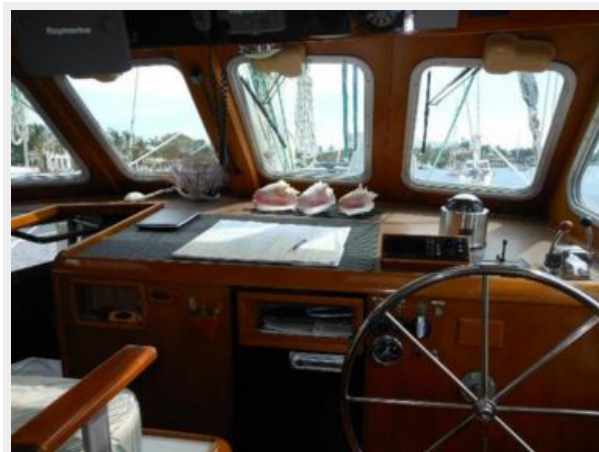
Starboard guest with folding bunk above



Starboard guest with folding bunk



View from inside helm



Inside helm



Inside helm



inside watch keeping chair



2- generators 12kw - 8kw



Salon looking aft



Salon looking aft



Master centerline walk around berth



Master centerline walk around berth



Cedar hanging lockers - drawers star.



Cedar hanging lockers - drawers port



Vanity - desk in master



Owner ensuite head - separate shower



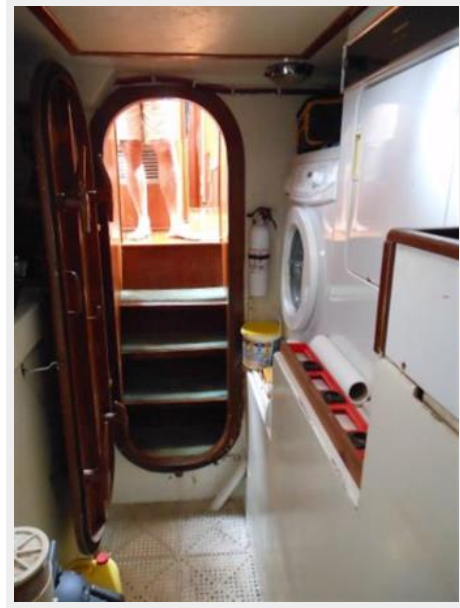
Water-maker never used



Looking aft through workshop to ER



Looking forward from engine room



Dual Racor fuel filters outside ER



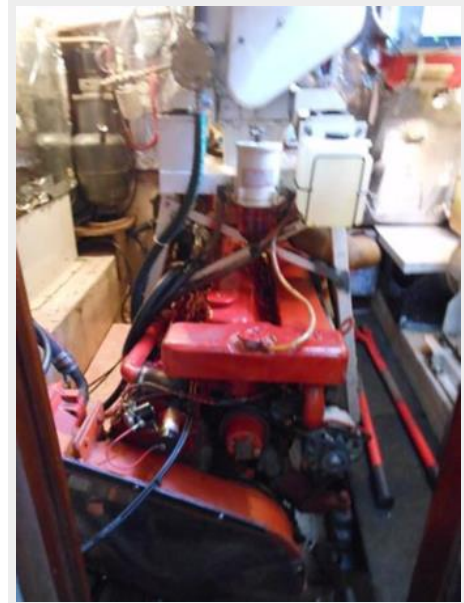
Apartment size washer - dryer



Generator above main engine

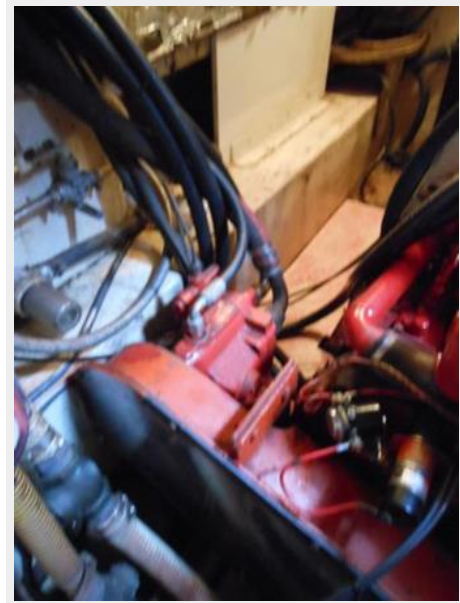
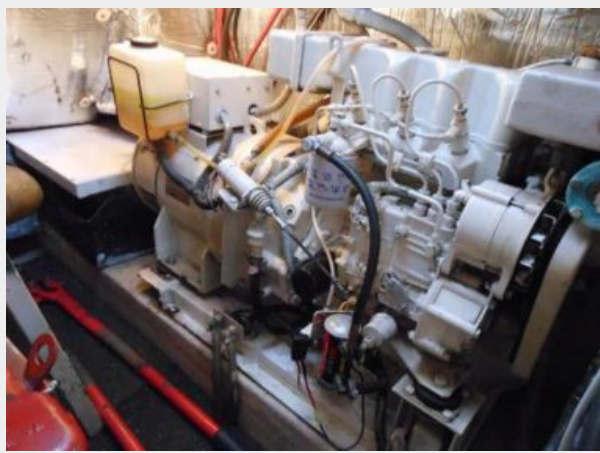


Main engine - 8KW generator above



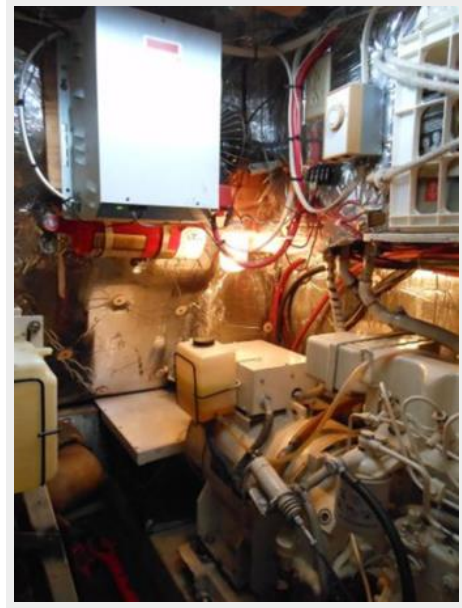
**Hydraulic power take off for bow thruster
headsails & windlass**

12KW Northern Lights generator to port



Northern Lights generator #2 12KW

Engine Room looking aft to port



Deck



Cockpit - Dingy - electric davits



Cockpit



Cockpit



Bow Thruster



Deck



Outside helm



Outside helm



On hard



Protected Rudder - keel



Deck



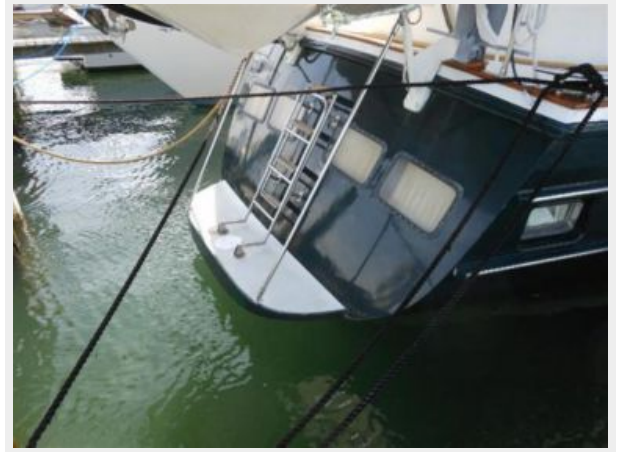
Line Drawing profile



At dock



Swim platform



CONTACTS

Andrey Shestakov, leading yacht broker of the sales department of Shestakov Yacht Sales Inc. Shestakov Yacht Sales Inc., the official representative of the Miami/Fort Lauderdale FL headquarters.

Contact details

Email: andrey@shestakovyachtsales.com

Web: shestakovyachtsales.com/en/

Telephones

USA: +1(954)274-4435

Office hours

Monday – Saturday: **9:00 - 21:00** EDT

Sunday: **closed**

Address



Harbour Towne Marina, 850 NE 3rd St,
STE 213, Dania, FL 33004