

57FT 1989 WELLINGTON PILOTHOUSE — WELLINGTON



Судостроитель: WELLINGTON

Год постройки: 1989

Модель: Катер с рулевой рубкой

Цена: ЦЕНА ЯХТЫ ПО ЗАПРОСУ

Местонахождение: United States

Длина общая: 57' 0" (17.37m)

Ширина: 14' 5" (4.39m)

Макс. осадка: 5' 6" (1.68m)

Купить 57ft 1989 Wellington Pilothouse — WELLINGTON а также выбрать подходящую вам яхту из нашего каталога яхт вам поможет опытный яхтенный брокер Андрей Шестаков. На сегодняшний день компания Shestakov Yacht Sales Inc. имеет большое количество яхт в собственном списке продаж, а также тесно сотрудничает со всеми крупными яхтенными производителями по всему миру.

Для того чтобы купить яхту 57ft 1989 Wellington Pilothouse — WELLINGTON а также проконсультироваться по любому вопросу связанному с покупкой, продажей, чартером яхт позвоните по телефону **+7(918)465-66-44**.

ОГЛАВЛЕНИЕ

ОГЛАВЛЕНИЕ	2
ХАРАКТЕРИСТИКИ	5
Обзор	5
Основная информация	5
Размеры	5
Скорость, вместимость и масса	5
Корпус и палуба	6
Информация о двигателе	6
ПОДРОБНОЕ ОПИСАНИЕ	7
57' Wellington Pilot house cutter	7
Исключения	11
Отказ от ответственности	11
ФОТОГРАФИИ	12
Galley	12
57' Wellington with swim platform	12
Galley	12
Galley looking aft	12
dining salon looking aft	13
12v drink refridgerator	13
Large capacity refrigeration - freezor	13
Icemaker	13
Port guest stateroom double	14
Dish rack drains overboard	14
Starboard guest stateroom with folding bunk above	14
Port guest stateroom double	14
Starboard guest head joins common shower	15
Starboard guest with folding bunk above	15
Starboard guest with folding bunk	15

View from inside helm	15
Inside helm	16
Inside helm	16
inside watch keeping chair	16
2- generators 12kw - 8kw	17
Salon looking aft	17
Salon looking aft	17
Master centerline walk around berth	17
Master centerline walk around berth	17
Cedar hanging lockers - drawers star.	17
Vanity - desk in master	18
Cedar hanging lockers - drawers port	18
Owner ensuite head - separate shower	18
Water-maker never used	18
Looking aft through workshop to ER	19
Looking forward from engine room	19
Dual Racor fuel filters outside ER	19
Apartment size washer - dryer	19
Generator above main engine	20
Main engine - 8KW generator above	20
Hydraulic power take off for bow thruster headsails & windlass	20
12KW Northern Lights generator to port	20
Northern Lights generator #2 12KW	21
Engine Room looking aft to port	21
Deck	21
Cockpit - Dingy - electric davits	21
Cockpit	22
Cockpit	22
Deck	22

Bow Thruster	22
Outside helm	23
Outside helm	23
On hard	23
Protected Rudder - keel	23
Deck	23
Line Drawing profile	23
At dock	24
Swim platform	24
КОНТАКТЫ	25
Контактная информация	25
Телефоны	25
Время работы	25
Адрес	25

ХАРАКТЕРИСТИКИ

Обзор

Amazing spacious shoal draft pilothouse motor-sailor custom built by Wellington Yachts for Bill Wellington's personal use with foam flotation.

- Inside-outside helm stations
- Hydraulic Windlass & Bow Thruster
- Hydraulic roller furling genoa & staysail (2 pumps)
- Roll furling main, designed for easy short-handed sailing
- 2 generators, solar, 2 - units air-conditioning
- New watermaker - dingy on davits with electric winches
- Massive tankage Fuel: 1000 gallon - Water: 930 gallon - Holding: 230 gallon

Основная информация

Тип судна: Катер с рулевой рубкой

Подкатегория: Палубный парусник

Модельный год: 1989

Год постройки: 1989

Страна: United States

Размеры

Длина общая: 57' 0" (17.37m)

Длина по ватерлинии: 50' 0" (15.24m)

Ширина: 14' 5" (4.39m)

Макс. осадка: 5' 6" (1.68m)

Трапы: 63' 0" (19.20m)

Скорость, вместимость и масса

Водоизмещение: 60000 Pounds

Вместимость воды: 930 Gallons

Вместимость сточного бака: 230 Gallons **Объем топливного бака:** 1000 Gallons

Корпус и палуба

Материал корпуса: Fiberglass

Информация о двигателе

Двигатели: 2

Производитель: Ford

Тип двигателя: Inboard

Тип топлива: Diesel

ПОДРОБНОЕ ОПИСАНИЕ

57' Wellington Pilot house cutter

Additional Specs, Equipment, and Information:

Designer: Wellington Design Team

Dimensions

LOA: 57 feet

LWL: 50 feet

Beam: 14.5 feet

Draft 5' 6"

Bridge Clearance: 63 feet

Ballast: 14000-Lbs Displacement: 60000-Lbs

Engines

Single, Ford Lehman 135hp Engine Model: 2725D (hours Unknown)

Tankage

Fuel: 1000 gallon

Water: 930 gallon

Holding: 230 gallon

Accommodations

- Spacious pilothouse with warm, rich, teak woodwork, teak & holly sole, with large opening windows for lots of light great views and ventilation.
- Helm is forward, starboard is an L-shaped settee with teak coffee table, to port are 2 chairs with table, and in the center a unique teak cabinet the houses the TV and provides a base for the helm seat.
- The full galley is down, forward of the pilothouse, with huge L-shaped dinette.
- Two guest staterooms forward with port side stateroom that has a double berth, ensuite vanity, and head, starboard stateroom with upper & lower bunks, ensuite vanity and head. The staterooms share center shower compartment.
- Master Stateroom is aft with island queen berth, cedar-lined hanging lockers, drawer storage, vanity, and ensuite head with separate shower stall.

- On-deck accommodations feature an aft deck horseshoe lounge with table. A solid framed awning provides shade & rain protection. The upper helm is located at the rear of the pilothouse and provides fresh air navigation.

Galley & Dinette The fully equipped galley is located to starboard. Large L-shaped dinette to port.

- Upper & Lower Cabinets
- Custom Spice Racks
- Custom Painted Tile Backsplash Behind Range
- Solid Surface Counter Top
- Stainless Steel Double Sinks
- Built-in Waste Bin
- GalleyMaid Three-burner Range with Oven
- Custom cold plate Refrigerator/Freezer with Water and Air Cooled Compressor
- Additional "dorm sized" refrigerator / Freezer

- Raritan Ice Maker

Electronics There is a full complement of cruising electronics at the pilothouse helm.

- Raytheon RL70RC 48-mile Radar & Chart Plotter
- Garmin Portable 75 GPS
- WH PP2X4 Autopilot
- Datamarine Tri-data - depth, knot & wind
- Two Ritchie Compasses
- Icom M127 VHF Radio with Fog Horn & Hailer
- Stevens SEA 222 SSB
- Satellite Phone System
- Panasonic Color Television
- Audiovox AM/FM/CD/Cassette Stereo
- Audiovox Remote CD Changer

Deck & Hull Designed to go anywhere *FORTY MORE's* bow is reinforced for ice - collision safety and the engine room has a water-resistant door.

- Stainless Steel Deck Rail
- Bow Pulpit with Stainless Steel Anchor Platform with Two Rollers
- 60# CQR Anchor with 380' chain rode
- Fortress Anchor with 20' chain & 400' rode
- Stainless Steel Lighthouse Model 1501 Hydraulic Windlass
- Teak scuff deck in windless area
- Stern-mounted dinghy davits store, launch, and retrieve tender with outboard motor
- Stainless ladder accesses the extended swim platform

Sails & Rigging

Cutter rigged with Profurl hydraulic Genoa and staysail and an EZ furl manual furling mainsail. All controls, sheets, and lines lead aft to the cockpit.

- Deck stepped Anodized aluminum mast and boom with double set of 90-degree spreaders
- Rigging is SS wire 3/16" to 3/8' diameter
- Genoa turning blocks with stoppers
- Profurl hydraulic furling Genoa
- Profurl hydraulic furling staysail
- EZ Furl manual furling mainsail
- (2) Genoa tracks w/cars
- Lewmar 55 winch for fore-stay sheets
- Lewmar 45 winch for halyards
- Lewmar 16 CSTO winch
- All controls, sheets & lines lead to aft cockpit
- Forespar telescoping downwind pole w/deck chocks

Mechanical & Electrical The engine room is large and well equipped with everything easily accessible. The utility room provides a work area as well as washer and dryer.

- Ford Lehman 135-hp Diesel Engine
- Racor Fuel Filters
- Hydraulic Steering
- 12" Hydraulic Bow Thruster
- Clothes Washer and Dryer
- 10-gallon Water Heater
- H&C Pressurized Water System
- Emergency Tiller
- Northern Lights 12 kW Generator
- Northern Lights 8 kW Generator
- 50-amp Shore Power with Cables
- Heart 3000-watt Inverter
- 140-amp Charger
- Three 12v Starter Batteries
- Eight 6v House Batteries

Upgrades by current owner:

2012

Lehman overhaul: new hoses, belts, injector lines, heat exchanger, general refurb

New exterior canopy structure

New isinglass windshield

Generator(s) overhaul

New solar panel installation (630 watts)

New inflatable

New 3.5hp outboard

Honda outboard overhaul

General boat refit (all systems repaired as required)

New oversized anchor and chain and setup overhaul

New chart plotter/radar package for exterior station (to match interior but independent)

New AIS

New day refrigerator

Thru-hull servicing and replacement as required

2013 / 2014

New AGM battery bank (735 amp hours)

New battery monitor

Davit rebuild and reinforcement to handle new dingy with engine

New anchor gypsy and self-launching anchor roller assembly

Hull refurb below waterline including new barrier coat where required and antifouling

Hull refurb above the waterline and new epoxy paint

Toe rail upkeep with Cetol teak

Thruster/windlass hydraulic overhaul including new lines, reservoir refurb, new heat exchanger, pump bracket rework

Main freezer system upgrade, and new refrigeration system for refrigerator

Headsail furler and sail refurb

Mainsail recut and furler refurb, mainsail rigging upgrade including new strut

New macerator pump forward head

New saltwater deck wash down pump

2015

New cutlass bearing, shaft straitening and alignment, stuffing box rebuild, new coupling

Lehman servicing including new head gasket

Generator(s) servicing

Fuel polishing

Swim ladder upgrade

New fresh water pump

New AGM batteries and solar panel controller

New hydraulic fluid heat exchanger and some hydraulic line replacement

2017

New Backup fresh water pump

New exterior VHF

Re-caulking to all hatches

New airconditioning circulation pump

New starting battery for the main engine

Исключения

При продаже яхты исключаются личные вещи владельца.

Отказ от ответственности

Компания предоставляет описание судна или яхты добросовестно, но не может гарантировать точность этой информации, а также не ручается за техническое состояние. Покупатель должен проинструктировать своих агентов или оценщиков исследовать представленную информацию более подробно, по собственному желанию. Продажа судна или яхты, изменение цены или снятие с продажи будет происходить без предварительного уведомления.

ФОТОГРАФИИ

57' Wellington with swim platform



Galley



Galley



Galley looking aft



dining salon looking aft



12v drink refridgerator



Large capacity refrigeration - freezer



Icemaker



Dish rack drains overboard



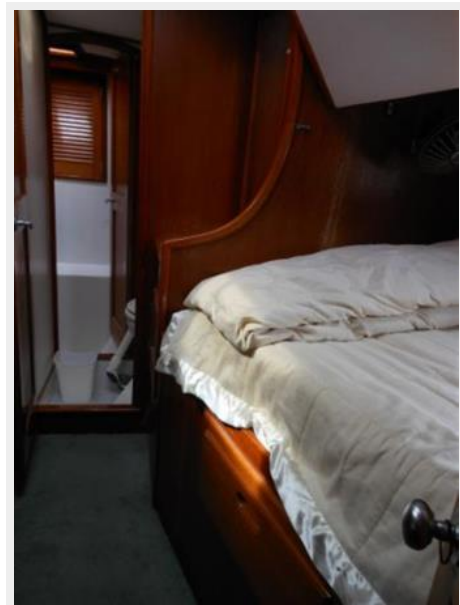
Port guest stateroom double



Port guest stateroom double



Starboard guest stateroom with folding bunk above



Starboard guest head joins common shower



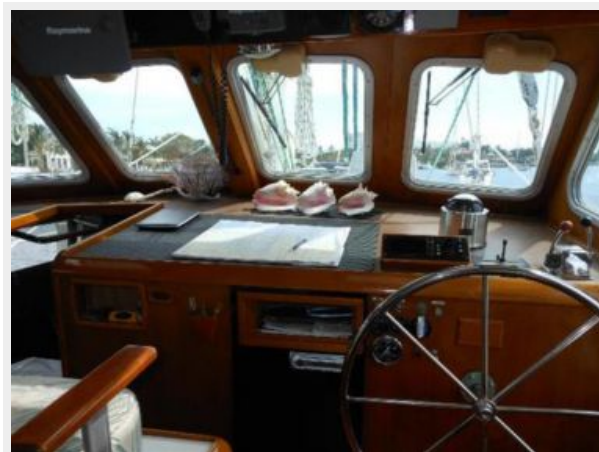
Starboard guest with folding bunk above



Starboard guest with folding bunk



View from inside helm



Inside helm



Inside helm



inside watch keeping chair



2- generators 12kw - 8kw



Salon looking aft



Salon looking aft



Master centerline walk around berth



Master centerline walk around berth



Cedar hanging lockers - drawers star.



Cedar hanging lockers - drawers port



Vanity - desk in master



Owner ensuite head - separate shower



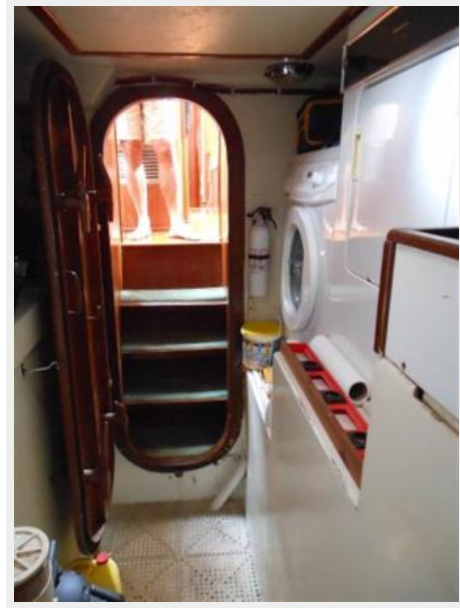
Water-maker never used



Looking aft through workshop to ER



Looking forward from engine room



Dual Racor fuel filters outside ER



Apartment size washer - dryer



Generator above main engine

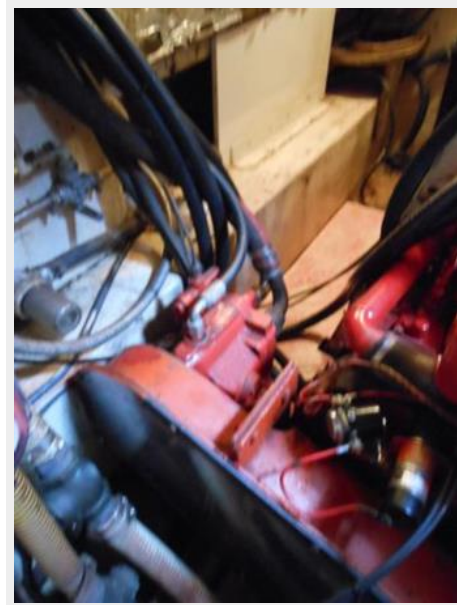
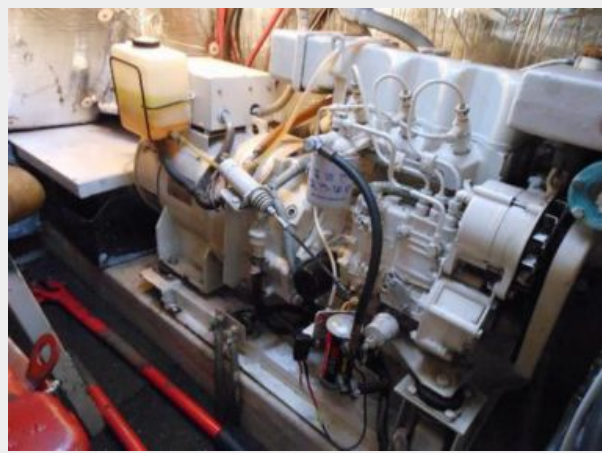


Main engine - 8KW generator above



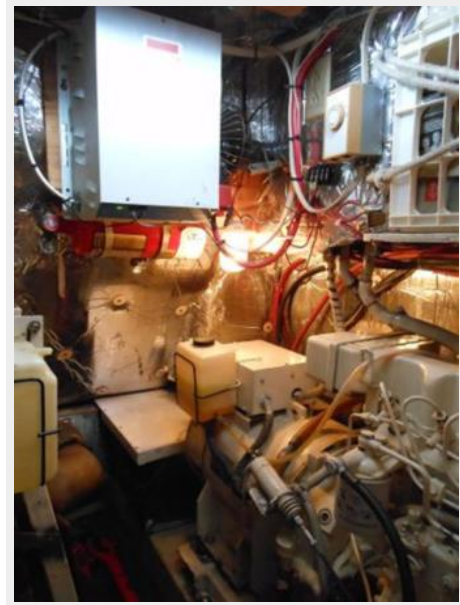
**Hydraulic power take off for bow thruster
headsails & windlass**

12KW Northern Lights generator to port



Northern Lights generator #2 12KW

Engine Room looking aft to port



Deck



Cockpit - Dingy - electric davits



Скокпит



Скокпит



Bow Thruster



Deck



Outside helm



Outside helm



On hard



Protected Rudder - keel



Deck



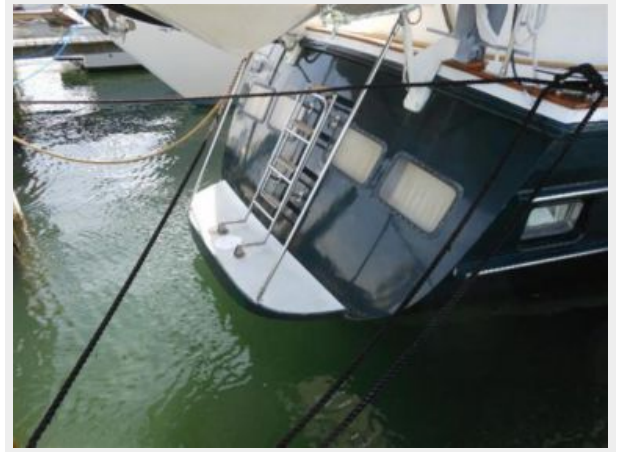
Line Drawing profile



At dock



Swim platform



КОНТАКТЫ

Андрей Шестаков (Andrey Shestakov) – ведущий яхтенный брокер отдела продаж яхт и судов компании Shestakov Yacht Sales Inc. Официальный представитель Shestakov Yacht Sales Inc. для русскоговорящих клиентов в центральном офисе компании в Майами/Форт Лодердейл/Флорида/США.

Контактная информация

Email: andrey@shestakovyachtsales.com

Web: shestakovyachtsales.com

Телефоны

Краснодарский край: **+7(918)465-66-44**

США, Майами, Флорида: **+1(954)274-4435**

Время работы

Понедельник – Суббота: **9:00 - 21:00**
EDT

Воскресенье: **Закрито**

Адрес



Harbour Towne Marina, 850 NE 3rd St,
STE 213, Dania, FL 33004