

ISABELLA — BROWARD



Builder: BROWARD

Year Built: 1989

Model: Motor Yacht

Price: PRICE ON APPLICATION

Location: United States

LOA: 104' 0" (31.70m)

Beam: 20' 0" (6.10m)

Min Draft: 5' 10" (1.78m)

Our experienced yacht broker, Andrey Shestakov, will help you choose and buy a yacht that best suits your needs **ISABELLA — BROWARD** from our catalogue. Presently, at Shestakov Yacht Sales Inc., we have a wide variety of yachts available on our sale's list. We also work in close contact with all the big yacht manufacturers from all over the world.

If you would like to buy a yacht **ISABELLA — BROWARD** or would like help answering any questions concerning purchasing, selling or chartering a yacht, please call **+1(954)274-4435**

TABLE OF CONTENTS

TABLE OF CONTENTS	2
SPECIFICATIONS	6
Overview	6
Basic Information	6
Dimensions	7
Speed, Capacities and Weight	7
Accommodations	7
Hull and Deck Information	7
Engine Information	7
DETAILED INFORMATION	8
FEATURES & DETAILS	8
Exclusions	9
Disclaimer	9
PHOTOS	11
2	11
3	11
5	11
4	11
6	11
7	11
8	12
9	12
10	12
11	12
12	12
13	12
15	13
14	13

16	13
17	13
18	13
19	13
20	14
21	14
23	14
22	14
24	14
25	14
27	15
26	15
28	15
29	15
31	15
30	15
33	16
32	16
34	16
35	16
37	16
36	16
39	17
38	17
40	17
24	17
26	17
25	17
27	18

28	18
30	18
29	18
31	18
32	18
33	19
34	19
35	19
36	19
37	19
38	19
40	20
39	20
41	20
42	20
44	20
43	20
46	21
45	21
48	21
47	21
49	21
50	21
52	22
51	22
53	22
54	22
55	22
56	22

57	23
58	23
59	23
60	23
62	24
61	24
63	24
64	24
65	24
66	24
67	25
68	25
69	25
70	25
72	25
71	25
73	26
Layout ISABELLA	26
CONTACTS	27
Contact details	27
Telephones	27
Office hours	27
Address	27

SPECIFICATIONS

Overview

This 110' Cockpit Motor yacht, 'Isabella', was built by Broward in the United States at their Saugatuck, MI shipyard. Originally a 104' Broward and the addition of the cockpit at the factory makes her 110'.

This luxury vessel's sophisticated exterior design and engineering are the work of Broward. Her luxurious interior was originally designed by Dee Robinson Interiors. Her exterior is styled by the Broward team who are also responsible for the entire engineering package. Her current owner has continually refitted many aspects of this yacht's systems and finishes.

"Isabella's" interior configuration has been designed to comfortably accommodate up to 6 guests overnight in 3 cabins, comprising a master suite, 1 VIP stateroom, 1 twin cabin and 1 Pullman bed. She is also capable of carrying up to 3 crew onboard in 2 (Oversized) cabins to ensure a relaxed luxury yacht experience. Additionally, she features a semi-displacement aluminum hull and superstructure.

Motor yacht, "Isabella", is equipped with a stabilization system which reduces roll motion effect and results in a smoother more enjoyable cruising experience underway.

Powered by 2 Detroit Diesel (16 V 92 TA) 1,449 hp diesel engines and propelled by her twin screw propellers. She is capable of a top speed of 27 knots and comfortably cruises at 19 knots. At 10 knots she sips 20 gallons per hour. She can carry around 10,800 of diesel on-board in her fuel tanks.

Basic Information

Category: Motor Yacht

Sub Category: Flybridge

Model Year: 1989

Year Built: 1989

Country: United States

Fly Bridge: Yes

Cockpit: Yes

Dimensions

LOA: 104' 0" (31.70m)

Beam: 20' 0" (6.10m)

Min Draft: 5' 10" (1.78m)

Speed, Capacities and Weight

Water Capacity: 750 Gallons

Holding Tank: 580 Gallons

Fuel Capacity: 7650 Gallons

Accommodations

Total Cabins: 3

Total Heads: 5

Hull and Deck Information

Hull Material: Aluminum

Engine Information

Engines: 2

Manufacturer: Detroit Diesel

Model: 16V92TA

Engine Type: Inboard

Fuel Type: Diesel

DETAILED INFORMATION

FEATURES & DETAILS

Electronics

- 2 Garmin 7215 Dual quad
- 2 72 Mile Garmin XHD radar
- 1080 DPI Screens
- HP Trip computer touch screen
- Engine room cameras
- KVH 75K TV dome

Galley

- LG side by side stainless
- LG 4 stove/oven
- LG Microwave
- LG Dishwasher
- LG 55" Flatscreen
- Italian Marble Tops in galley and dining table
- Built-in settee for 12
- Double Stainless sink
- Porcelain tile flooring
- LED Lighting in new headliners
- Crown Moulding
- Barstools

Accommodations

Master

- California King
- His & her heads
- Jacuzzi
- 55" LG TV
- Granite tops
- Built-in window treatments
- Walk in cedar closet with safe

VIP

- Queen bed
- Cedar closet
- Granite tops

- 60" LG TV

Guest

- 2 Twins and Pulman Berth
- Cedar closet
- Granite tops

Salon

- Webber Grand piano with piano-mation by Yamaha connected to Bose sound system
- Zinc Dining table for 8
- White Chesterfield Couch
- Samsung 60" flatscreen
- Dolomite stone tops
- Stacked stone accent wall with pillars
- Day Head

Flybridge

- 7215 Garmin GPS
- 2 Wing stations
- Engine room camera screen
- New bolstered guest seat
- Custom wraparound seating with sundeck lounges with diamond stitching
- Dolomite bartop
- Stainless BBQ Grill
- (2) 5000LB tender winches
- Radar Arch with LED Lighting
- Nautica 14' 80 hp Jet tender 38 Hours

Exclusions

Owner's personal belongings.

Disclaimer

The Company offers the details of this vessel or yacht in good faith but cannot guarantee or warrant the accuracy of this information nor warrant the condition of the vessel. A buyer should

instruct his representatives, agents, or his surveyors, to investigate such details as the buyer desires validated. This vessel or yacht is offered subject to prior sale, price change, or withdrawal without notice.

PHOTOS

2



3



5



4



6



7



8



9



10



11



12



13



14



15



16



17



18



19



20



21



22



23



24



25



26



27



28



29



30



31



32



33



34



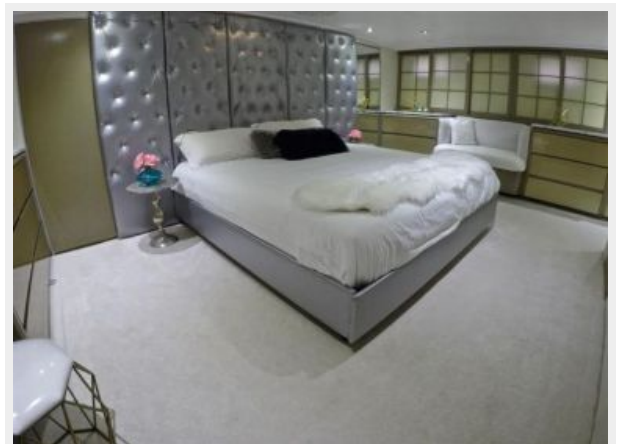
35



36



37



38



39



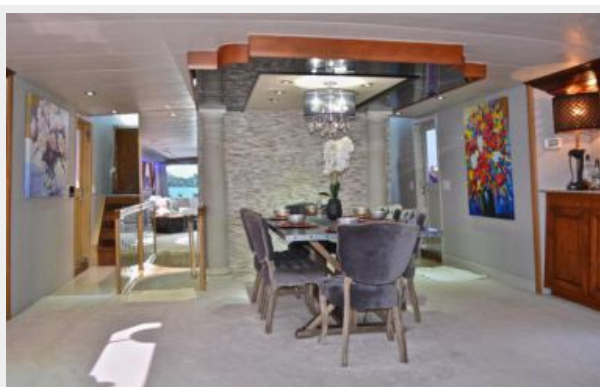
40



24



25



26



27



28



29



30



31



32



33



34



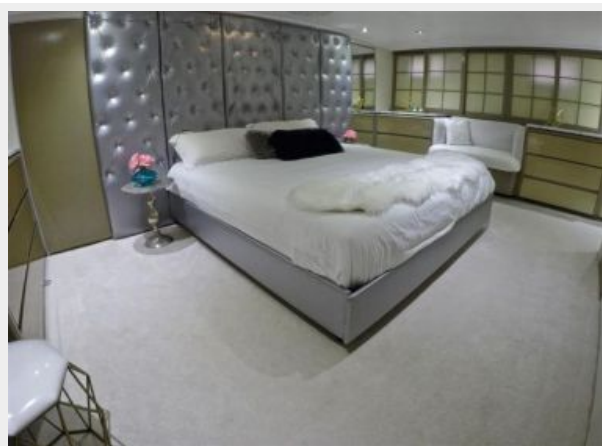
35



36



37



38



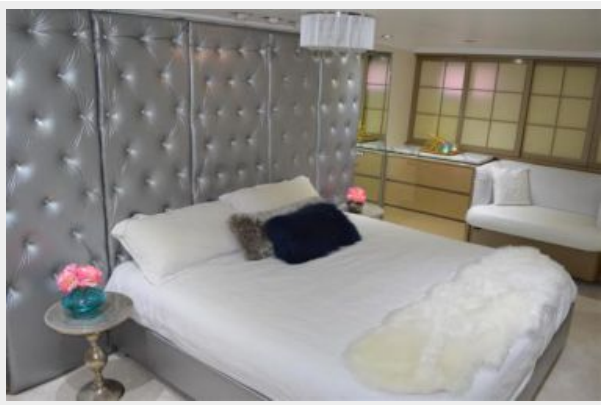
39



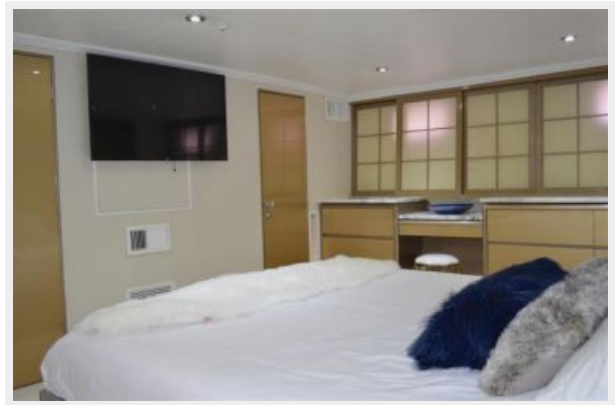
40



41



42



43



44



45



46



47



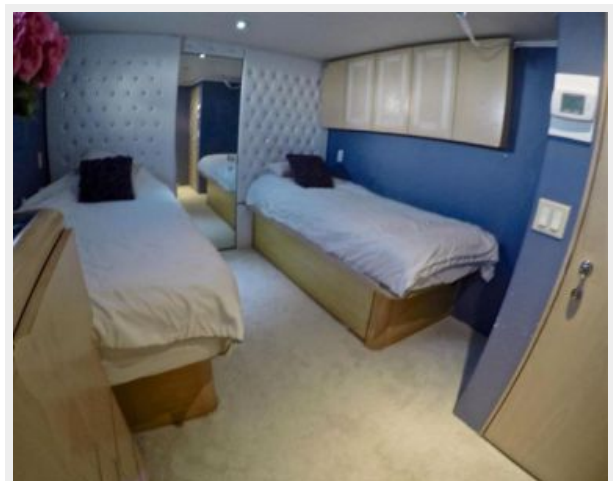
48



49



50



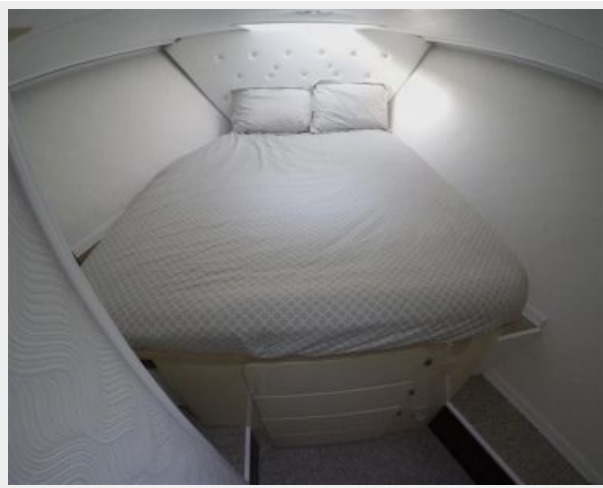
51



52



53



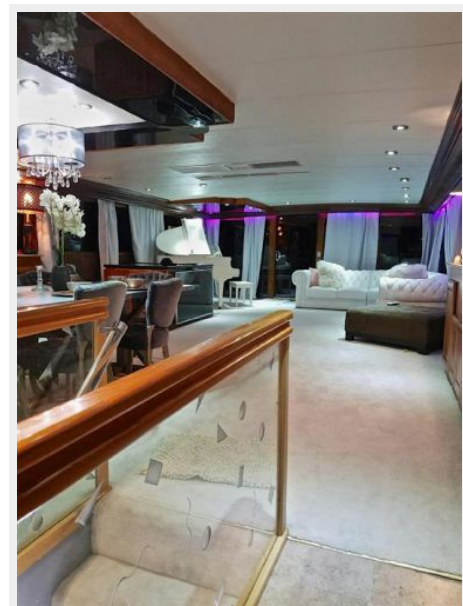
54



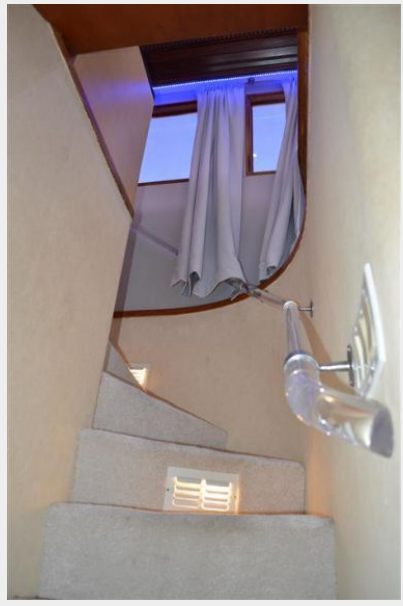
55



56



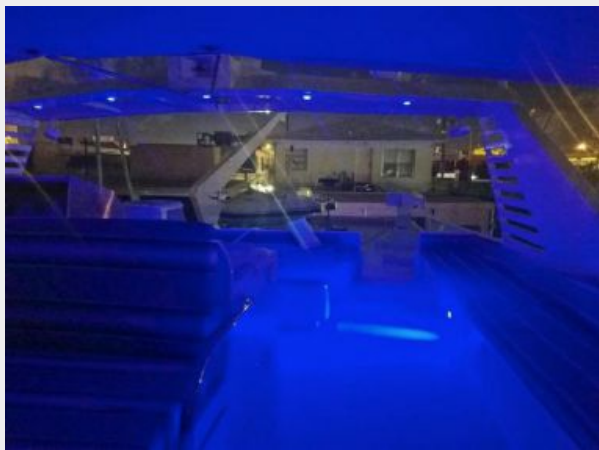
57



58



59



60



61



62



63



64



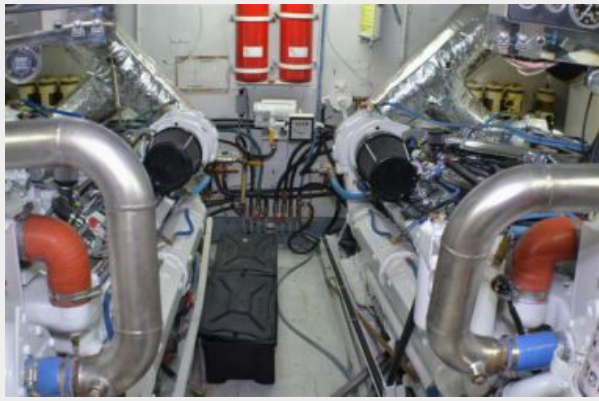
65



66



67



68



69



70



71



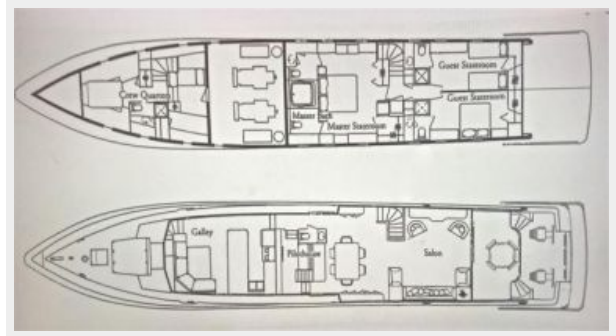
72



73



Layout ISABELLA



CONTACTS

Andrey Shestakov, leading yacht broker of the sales department of Shestakov Yacht Sales Inc. Shestakov Yacht Sales Inc., the official representative of the Miami/Fort Lauderdale FL headquarters.

Contact details

Email: andrey@shestakovyachtsales.com

Web: shestakovyachtsales.com/en/

Telephones

USA: +1(954)274-4435

Office hours

Monday – Saturday: **9:00 - 21:00** EDT

Sunday: **closed**

Address



Harbour Towne Marina, 850 NE 3rd St,
STE 213, Dania, FL 33004