

STELLA BLUE — PRINCESS YACHTS



Судостроитель: PRINCESS YACHTS

Год постройки: 2014

Модель: Моторная яхта

Цена: ЦЕНА ЯХТЫ ПО ЗАПРОСУ

Местонахождение: United States

Длина общая: 60' 0" (18.29m)

Ширина: 15' 10" (4.83m)

Макс. осадка: 4' 2" (1.27m)

Купить **Stella Blue — PRINCESS YACHTS** а также выбрать подходящую вам яхту из нашего каталога яхт вам поможет опытный яхтенный брокер Андрей Шестаков. На сегодняшний день компания **Shestakov Yacht Sales Inc.** имеет большое количество яхт в собственном списке продаж, а также тесно сотрудничает со всеми крупными яхтенными производителями по всему миру.

Для того чтобы купить яхту **Stella Blue — PRINCESS YACHTS** а также проконсультироваться по любому вопросу связанному с покупкой, продажей, чартером яхт позвоните по телефону **+7(918)465-66-44**.

ОГЛАВЛЕНИЕ

ОГЛАВЛЕНИЕ	2
ХАРАКТЕРИСТИКИ	4
Основная информация	4
Размеры	4
Скорость, вместимость и масса	4
Размещение	4
Корпус и палуба	4
Информация о двигателе	4
ПОДРОБНОЕ ОПИСАНИЕ	5
Description	5
Salon	5
Galley	5
Master Stateroom	5
Forward Guest Stateroom	6
Starboard Guest Stateroom	6
Aft Crew Quarters	6
Flybridge/Upper Helm	6
Lower Helm	7
Cockpit/Aft Deck	7
Electrical System/Engine Room	7
Customizations and Upgrades	8
Exclusions	9
Исключения	9
Отказ от ответственности	9
ФОТОГРАФИИ	10
КОНТАКТЫ	18
Контактная информация	18
Телефоны	18

Время работы	18
Адрес	18

ХАРАКТЕРИСТИКИ

Основная информация

Тип судна: Моторная яхта

Модельный год: 2015

Год постройки: 2014

Страна: United States

Размеры

Длина общая: 60' 0" (18.29m)

Ширина: 15' 10" (4.83m)

Макс. осадка: 4' 2" (1.27m)

Скорость, вместимость и масса

Вместимость воды: 210 Gallons

Объем топливного бака: 739 Gallons

Размещение

Всего кают: 4

Всего ком. состава: 3

Корпус и палуба

Материал корпуса: Fiberglass

Комплектация корпуса: Modified V-Hull

Информация о двигателе

Двигатели: 2

Производитель: Caterpillar

Модель: C-18A

Тип двигателя: Inboard

Тип топлива: Diesel

ПОДРОБНОЕ ОПИСАНИЕ

Description

The Princess 60 M/Y Flybridge is an exhilarating and agile craft whose sleek, low profile belies her vast interior volume. Custom built by experienced and discerning owner's, Stella Blue is one of the most exceptional versions of this highly desirable model. Meticulously customized and upgraded to the fullest extent, both inside and out, no detail was over looked in creating a yachting experience that is typical of a much larger craft. From the custom furniture and finishes to the upgraded CAT C18 engines, Seakeeper stabilizer and wireless Xenta joystick - Stella Blue is sure to "Wow" owners, operators, friends, and family in equal measure.

Since her commissioning, Stella Blue has been single owned, professionally maintained with records and continues her Platinum CAT warranty through May 2020. Her program included winters in Palm Beach and summers in the Hamptons.

Salon

- Triple opening stainless-steel framed sliding doors to aft Cockpit
- U-shaped sofa with coffee table
- Two-seater sofa to port
- Entertainment center incorporating 48" LED TV with electric raise/lower mechanism and DVD, radio/MP3 system with surround sound system
- Sideboard units with refrigerator, bottle and glass storage and icemaker
- Dining area with U-shaped seating

Galley

- 4-zone ceramic hob
- Combination microwave/convection oven
- Stainless-steel sink
- Full-height refrigerator/freezer
- Electrically operated sliding glass partition from aft Salon

Master Stateroom

- Large double bed with drawers below
- Twin bedside tables
- Wardrobe closet with shelves

- Dressing table
- 40" LED TV
- Stereo radio, DVD, MP3
- Overhead and individual berth lights
- En suite bathroom

Forward Guest Stateroom

- Large double bed with drawers below
- Wardrobe closet with shelves
- Vanity unit
- Storage lockers and drawers
- Deck hatch with fly screen and blinds
- Overhead and individual berth lights
- En suite bathroom with day access

Starboard Guest Stateroom

- Two single beds (with powered conversion to double)
- Wardrobe closet with shelves
- Storage lockers
- Overhead and individual berth lights
- En suite bathroom

Aft Crew Quarters

- Two single berths with storage below
- Storage lockers
- Overhead and individual berth lights
- Bathroom with toilet, washbasin and shower

Flybridge/Upper Helm

- Dual station instrumentation, controls and alarm system including VHF, echo sounder with alarm and autopilot
- U-shaped seating area and teak table with removable center section
- L-shaped seat (converts to sunbed)
- Radio/iPod/MP3 with waterproof speakers
- Wet bar including sink with electric barbecue and top loading cool box

Lower Helm

- Twin helm seats with fore and aft adjustment for helmsman
- Electric opening windows at helm position and port side
- Full engine instrumentation including fuel gauges, exhaust temperature, fuel contamination alarms, rudder position indicator
- Navigation system including color radar, GPS and chartplotter, VHF, echo sounder with alarm, autopilot and high speed magnetic compass
- Controls for bow and stern thruster, windscreen wipers, bilge pump and trim tabs (with indicator)
- Chart table with light and chart storage
- 24v and 220/240v electrical control panels
- 12v outlet
- Red night lighting

Cockpit/Aft Deck

- U-shaped seating and teak table with hi/lo for sun bed
- Locker housing 240v shore support inlet and cable storage
- Lockable gas strut assisted hatch to engine room
- Transom gate leading to bathing platform with electro-hydraulic raise/lower mechanism, foldaway swimming ladder, hot and cold shower, storage and deck light

Electrical System/Engine Room

- 24 Volt:
 - (4) Heavy-duty batteries for engine starting
 - (4) Heavy-duty auxiliary batteries
 - 60 amp battery charger charges both banks of batteries via an automatic switch charging system
 - Remote battery master switches with controls at main switch panel
 - LED lighting throughout
- 220/240 Volt:
 - 21.5kW diesel generator in own sound shield with water cooled specially silenced exhaust
 - Polarity check system, circuit breakers on all circuits
 - Bow and stern thrusters
 - Power-assisted electro-hydraulic steering with hydraulic back-up system
 - Electronic engine and gear shift controls
 - Dripless shaft seals
 - Engine room extractor fans with electronic time delay

Customizations and Upgrades

This extensive list demonstrates the care and expense the owners invested in Stella Blue to create a truly unique vessel. No detail was too big or too small.

- Seakeeper M8000 Gyro Stabilizer: Nearly eliminates boat roll on the water, at anchor and at the dock.
- Wireless Xenta Joystick: Control the yacht from anywhere on board. Greatly improved visibility and simplified docking.
- Upgraded Xenta Control System: The latest system integrates the stern thruster in order to provide true joystick precision and functionality.
- Walnut Floors and Finishes: Mat finished with the walnut floors extending all the way down the stairs leading to the cabins.
- Custom interior table covers and floor runners: Protects the walnut when not aboard and during deliveries.
- Custom Set of Drawers in the Master Stateroom: Greatly extends the amount of storage.
- Custom Mattress in Master Stateroom: includes 8 inch width extension for vastly improved comfort and space.
- Dometic Breath Easy System: UV based air purifier ensures fresh and odor free airflow. Installed in-line in the master stateroom air handler.
- Cockpit Table Converts to Day Bed: Custom designed by owners to provide additional lounging area.
- Bow Sunpad Backrests: Custom designed by owners, these teak backrests greatly enhance the comfort and usability of the bow sunpad.
- Rogue Wave Wifi System + 4G LTE Cellular Antenna: Connect to marina or local wifi signals when available or utilize the onboard cellular data system for internet access. Owners utilized these connections for streaming TV which worked even better than satellite tv.
- AV system: Entertainment system includes Cat-6 wiring, Apple-Mini media hub, Fusion Outdoor Stereos and Apple TV's in all staterooms.
- Satellite TV: Direct TV in the crew stateroom and salon.
- Square sinks through-out the boat: Classic-contemporary style compared to bowl style sinks in other vessels from this model year.
- Galley Sink: Extra-large with garbage disposal and removable nozzle.
- Custom Additional Hand Holds: throughout the vessel for added comfort and safety.
- Electronic Sliding Bed in Starboard Cabin: Converts the twin single beds into one full-sized bed.
- Upgraded Tender: 12ft AB tender with 50hp Yamaha outboard.
- Hydraulic Swim Platform: Easy tender launching/retrieval and serves as a great "beach" for swimming and laying out.
- Swim Platform Cleats: Retractable for easy and safe tying of tender and water toys.
- Underwater Lights: Installed along the stern and port/starboard sides for enhanced on-water and dockside presence.
- Illuminated Nameboard: For enhanced on-water and dockside presence.

- Grey Hull: Painted hull distinguishes the vessel and makes her unique among other yachts.
- Boarding Doors and Stairs: Much easier and safer boarding for owners and guests.
- AC Strainer Upgraded and Moved to Engine Room: Greatly improved functionality and access for easy maintenance.
- Arid Bilge Dry Bilge System: Keeps bilge areas dry and odor free - installed in forward bilge, engine room and lazarette.
- Boning Yacht System Control: Simple and elegant touchpads for system management. No more huge panels of circuit breakers.
- GOST Watch: security system with 3 CCTVs and cloud DVR. Cameras can be monitored remotely for peace of mind.
- Water Maker: Racor Village Marine LTM 500
- Dual Screen Helms: Upper and Lower helms feature dual Garmin GPS Map 8212 chartplotters for maximum situational awareness as well as a simplified and efficient helm layout.
- Complete Garmin Electronics Package: 8212 chartplotter/GPS (4 total), Garmin GMR604 6kw open array radar IPO, Garmin GMI20 data repeater, Garmin autopilot, Garmin VHF300 handset
- Cat C18 Engines: Upgraded engine package for maximum power and comfort.

Exclusions

- Owner's personal effects. List of specific items can be provided upon request and will also be provided upon acceptance of offer on vessel.

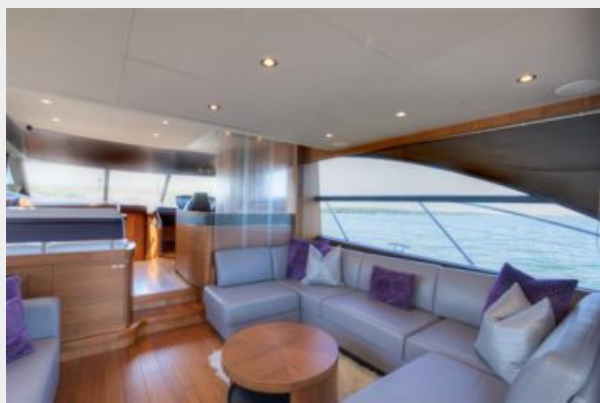
Исключения

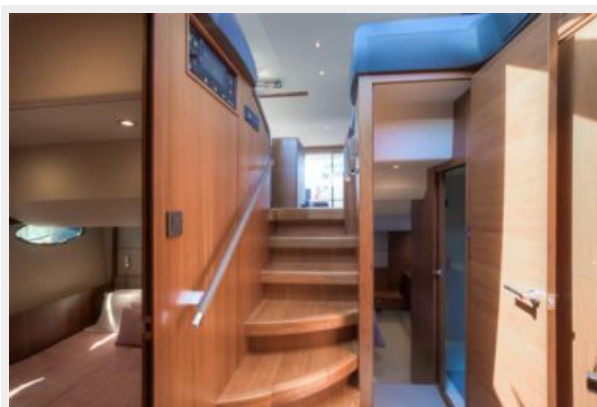
При продаже яхты исключаются личные вещи владельца.

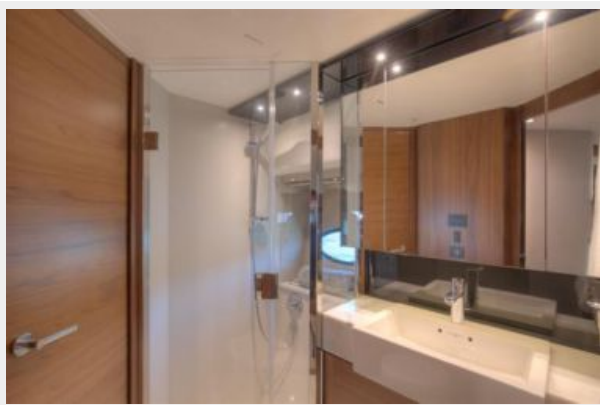
Отказ от ответственности

Компания предоставляет описание судна или яхты добросовестно, но не может гарантировать точность этой информации, а также не ручается за техническое состояние. Покупатель должен проинструктировать своих агентов или оценщиков исследовать представленную информацию более подробно, по собственному желанию. Продажа судна или яхты, изменение цены или снятие с продажи будет происходить без предварительного уведомления.

ФОТОГРАФИИ

















КОНТАКТЫ

Андрей Шестаков (Andrey Shestakov) – ведущий яхтенный брокер отдела продаж яхт и судов компании Shestakov Yacht Sales Inc. Официальный представитель Shestakov Yacht Sales Inc. для русскоговорящих клиентов в центральном офисе компании в Майами/Форт Лодердейл/Флорида/США.

Контактная информация

Email: andrey@shestakovyachtsales.com

Web: shestakovyachtsales.com

Телефоны

Краснодарский край: **+7(918)465-66-44**

США, Майами, Флорида: **+1(954)274-4435**

Время работы

Понедельник – Суббота: **9:00 - 21:00**
EDT

Воскресенье: **Закрето**

Адрес



Harbour Towne Marina, 850 NE 3rd St,
STE 213, Dania, FL 33004