

WE TWO — CARVER



Судостроитель: CARVER

Год постройки: 2006

Модель: Крейсер

Цена: ЦЕНА ЯХТЫ ПО ЗАПРОСУ

Местонахождение: United States

Длина общая: 43' 7" (13.28m)

Макс. осадка: 3' 10" (1.17m)

Крейс. скорость: 21.72440605 Kts. (25 MPH)

Купить **We Two — CARVER** а также выбрать подходящую вам яхту из нашего каталога яхт вам поможет опытный яхтенный брокер Андрей Шестаков. На сегодняшний день компания **Shestakov Yacht Sales Inc.** имеет большое количество яхт в собственном списке продаж, а также тесно сотрудничает со всеми крупными яхтенными производителями по всему миру.

Для того чтобы купить яхту **We Two — CARVER** а также проконсультироваться по любому вопросу связанному с покупкой, продажей, чартером яхт позвоните по телефону **+7(918)465-66-44**.

ОГЛАВЛЕНИЕ

ОГЛАВЛЕНИЕ	2
ХАРАКТЕРИСТИКИ	6
Обзор	6
Основная информация	6
Размеры	6
Скорость, вместимость и масса	6
Размещение	7
Корпус и палуба	7
Информация о двигателе	7
ПОДРОБНОЕ ОПИСАНИЕ	8
Vessel Overview	8
Salon	10
Galley and Dinette	11
Master Stateroom and Head	12
Guest Stateroom and Head	12
Deck and Cockpit	13
Bridge	14
Helm and Electronics	14
Engines and Mechanical Equipment	15
Исключения	15
Отказ от ответственности	15
ФОТОГРАФИИ	16
Port Profile	16
Profile	16
Profile	16
Bow	16
Bow starboard	16
Starboard Profile	16

Starboard side from aft	17
Stern	17
Port side at dock	17
Port aft at dock	17
Stern at dock	17
Starboard side at dock	17
Salon facing forward	18
Salon facing aft	18
Salon starboard side	18
Salon port side	18
Dinette	18
Galley	18
Galley	19
Galley	19
Galley storage	19
washer/dryer in storage area	19
Galley storage	19
Washer/Dryer	19
Companionway facing forward	20
Master Stateroom	20
Master Stateroom	20
Master shower	20
Master head	20
Companionway facing aft	20
Guest stateroom	21
Guest stateroom	21
Guest head	21
Guest head	21
Salon Electrical Panel	21

Bridge facing aft	21
Bridge facing forward	22
Bridge facing forward	22
Bridge	22
Helm	22
Helm	22
Helm	22
Bridge Wet Bar	23
Steps bridge to cockpit	23
Steps cockpit to bridge	23
Cockpit	23
Cockpit	23
Bow deck	23
Windlass	24
Bow Sunpads	24
Bow	24
Cockpit Engine Access	24
Salon Engine Access	24
Engine Compartment	24
Engine Compartment	25
Engine Compartment	25
Engine Compartment	25
Engine Compartment	25
Engine Compartment	25
Engine Compartment	25
Engine Compartment	25
Engine Compartment	26
Port Profile	26
КОНТАКТЫ	27
Контактная информация	27

Телефоны	27
Время работы	27
Адрес	27

ХАРАКТЕРИСТИКИ

Обзор

This is a well maintained 2007 Carver 42 SS with less than 500 hours on the Volvo D6 diesels with IPS pod drives. This vessel has been kept in a covered slip for the past 7 years and all service records are available. This is the perfect cruiser with two full staterooms and two heads with plenty of storage and a washer and dryer. The bridge is very large with plenty of room for entertaining and a full electronics package. The owner is retiring from boating and this vessel is priced to sell.

ASKING \$239,900

Основная информация

Тип судна: Крейсер	Подкатегория: Sedan Cruiser
Модельный год: 2007	Год постройки: 2006
Страна: United States	Верх: Hardtop
Открытая палуба мостика: Да	Кубрик: Да

Размеры

Длина общая: 43' 7" (13.28m)	Макс. осадка: 3' 10" (1.17m)
-------------------------------------	-------------------------------------

Скорость, вместимость и масса

Крейс. скорость: 21.72440605 Kts. (25 MPH)	Крейсерская скорость поворота: 2100 Kts.
Водоизмещение: 33650 Pounds	Вместимость воды: 90 Gallons
Вместимость сточного бака: 50 Gallons	Объем топливного бака: 400 Gallons

Размещение

Всего кают: 2

Всего ком. состава: 2

Корпус и палуба

Материал корпуса: Fiberglass

Цвет корпуса: White

Информация о двигателе

Двигатели: 2

Производитель: Volvo Penta

Модель: D6-370

Тип двигателя: Inboard

Тип топлива: Diesel

ПОДРОБНОЕ ОПИСАНИЕ

Vessel Overview

This is a very well cared for and well maintained 2007 Carver 42 Super Sport. It has twin D6 Volvo diesels rated at 370 hp each with IPS pod drives with joystick control. The engines only have approx. 480 hours and were last serviced December 2017. The 9KW Kohler generator also has low hours with approx. 500 hours. This vessel has been kept in a covered slip in St. Petersburg for that past seven years and the owner has kept all service records since he purchased the vessel. He has the bottom wiped down by a diver monthly and cleaned monthly as well by a Yacht Services company. The owner is retiring from boating so he has placed We Two on the market.

This is a well executed cruiser with two staterooms and two heads. The bridge is large with ample seating for crew and friends. It has a full enclosure for the bridge which is in very good condition and there is an air conditioning unit on the bridge however the owner has never used this unit as he usually cruises with the enclosure open. The bridge has a hardtop and a bimini extension for greater coverage. The helm is well equipped with Chartplotter, bottom sonar, radar, autopilot and VHF radio. The joystick control is located here for easy maneuvering when docking. There is a new icemaker on the bridge and a sink with wide steps that lead from the bridge down to the cockpit.

When stepping aboard the We Two from the dock there is a large swim platform with a swim ladder and a transom door for easy access to the large cockpit. The cockpit has high gunnels for safety when underway and storage compartments located in the transom. There is a hatch for access to the aft portion of the engine compartment and remote stereo controls are located here as well.

Entrance into the salon is through a sliding door and the salon has couch seating to port (this turns into a sleeper bed) and two barrel chairs located to starboard. Moving forward the dinette is located to starboard with a beautiful table and storage drawers beneath the table. The galley is located on the port side directly across from the dinette and has wood plank flooring. There is ample counter space with a double sink, two burner cook top, microwave/convection oven and separate refrigerator and freezer. Located beneath the galley floor is a large storage area which houses the washer and dryer units with additional storage there as well.

Moving forward and down a couple of steps there is the guest stateroom to starboard. This is a private room with a full access solid cherry wood door and a double berth. It also contains a TV, several storage drawers and cedar lined hanging locker. Located directly across from the companionway on the port side is the guest head with sink, vacu flush toilet and shower stall with acrylic sliding door.

Continuing forward is the master stateroom with a solid cherry wood door, Queen centerline berth, with storage drawers and cabinets. The master head has separate shower located on the

port side and the toilet and sink located on the starboard side. Each has its' own entrance door and are both located within the master stateroom.

The engine compartment has a large access hatch in the floor of the salon and is well laid out with the generator contained in its' own sound shield in the forward part of the engine compartment.

Outside the side decks are wide making access to the bow safe. There is a sunpad on the bow and an electric windlass for ease of anchoring.

Carver is noted for building a solid and well designed yacht and the 42 SS offers all the accommodations of a well executed coastal cruiser.

ASKING \$239,900

This is a very well cared for and well maintained 2007 Carver 42 Super Sport. It has twin D6 Volvo diesels rated at 370 hp each with IPS pod drives with joystick control. The engines only have approx. 480 hours and were last serviced December 2017. The 9KW Kohler generator also has low hours with approx. 500 hours. This vessel has been kept in a covered slip in St. Petersburg for that past seven years and the owner has kept all service records since he purchased the vessel. He has the bottom wiped down by a diver monthly and cleaned monthly as well by a Yacht Services company. The owner is retiring from boating so he has placed We Two on the market.

This is a well executed cruiser with two staterooms and two heads. The bridge is large with ample seating for crew and friends. It has a full enclosure for the bridge which is in very good condition and there is an air conditioning unit on the bridge however the owner has never used this unit as he usually cruises with the enclosure open. The bridge has a hardtop and a bimini extension for greater coverage. The helm is well equipped with Chartplotter, bottom sonar, radar, autopilot and VHF radio. The joystick control is located here for easy maneuvering when docking. There is a new icemaker on the bridge and a sink with wide steps that lead from the bridge down to the cockpit.

When stepping aboard the We Two from the dock there is a large swim platform with a swim ladder and a transom door for easy access to the large cockpit. The cockpit has high gunnels for safety when underway and storage compartments located in the transom. There is a hatch for access to the aft portion of the engine compartment and remote stereo controls are located here as well.

Entrance into the salon is through a sliding door and the salon has couch seating to port (this turns into a sleeper bed) and two barrel chairs located to starboard. Moving forward the dinette is

located to starboard with a beautiful teak table and storage drawers beneath the table. The galley is located on the port side directly across from the dinette and has wood plank flooring. There is ample counter space with a double sink, two burner cook top, microwave/convection oven and separate refrigerator and freezer. Located beneath the galley floor is a large storage area which houses the washer and dryer units with additional storage there as well.

Moving forward and down a couple of steps there is the guest stateroom to starboard. This is a private room with a full access solid cherry wood door and a double berth. It also contains a TV, several storage drawers and cedar lined hanging locker. Located directly across from the companionway on the port side is the guest head with sink, vacu flush toilet and shower stall with acrylic sliding door.

Continuing forward is the master stateroom with a solid cherry wood door, Queen centerline berth, with storage drawers and cabinets. The master head has separate shower located on the port side and the toilet and sink located on the starboard side. Each has its' own entrance door and are both located within the master stateroom.

The engine compartment has a large access hatch in the floor of the salon and is well laid out with the generator contained in its' own sound shield in the forward part of the engine compartment.

Outside the side decks are wide making access to the bow safe. There is a sunpad on the bow and an electric windlass for ease of anchoring.

Carver is noted for building a solid and well designed yacht and the 42 SS offers all the accommodations of a well executed coastal cruiser.

ASKING \$239,900

Salon

The salon offers the following features:

- * Couch located on port side that converts to sleeper UPGRADE
- * Two Barrel chairs located on starboard side
- * Cherry wood cabinetry
- * Carpeting
- * AC & DC distribution panels
- * Vizio Flat Screen TV UPGRADE - NEW 2016
- * Engine Compartment floor hatch access
- * Air Conditioner Control

Galley and Dinette

Galley and Dinette offer the following features:

Galley:

- * Wood plank flooring
- * Double Stainless Steel Sinks with removable counter top covers
- * Storage cabinets beneath sinks
- * Two Burner Electric Cook Top - Princess
- * Microwave/Convection Oven - Tappan
- * Refrigerator/Freezer - Nova Cool
- * Utility Room Access Hatch
- * Utility Room beneath floor contains Washer and Dryer units (Malber) and additional storage - UPGRADE

Dinette:

- * L Shaped Seating
- * Large table with sapele pommele wood inlay top and cherry wood sea rail
- * Storage cabinet and drawers in table base

* Carpet

Master Stateroom and Head

Master Stateroom:

- * Queen size centerline berth
- * Storage drawers/cabinets below berth
- * Air conditioner controls NEW A/C UNIT 2016
- * Carpet
- * Solid cherry wood entrance door
- * Hanging locker
- * Overhead hatch
- * TV
- * Private entrance to head and shower

Master Head :

- * Head and Shower are located in separate compartments with separate private access doors
- * Vacu Flush toilet
- * Sink with storage beneath

Master Shower :

- * Bench Seat
- * Removable shower head for use as hand shower
- * Storage cabinet

Guest Stateroom and Head

- * Double Berth
- * Flat Screen TV NEW 2016
- * Entrance door solid cherry wood
- * Cedar lined hanging locker
- * Storage cabinets and drawers
- * Air conditioner controls
- * Stereo

Guest Head :

- * Located across companionway from guest stateroom
- * Entrance door solid cherry wood
- * Vacu Flush toilet
- * Vanity with sink and storage
- * Shower stall with acrylic sliding door

Deck and Cockpit

- * Hardtop with aft bimini extension and full enclosure UPGRADE
- * Mesh cover for windshield
- * Maxwell electric windlass
- * Sun Pads on bow UPGRADE
- * Fender holders on bow
- * Swim platform with boarding ladder
- * Transom door
- * Transom Shower
- * Shorepower 50 Amp cord with Glendenning power Cablemaster
- * Transom storage lockers
- * Molded steps to side decks

- * Molded steps to bridge
- * Sliding door entrance to salon
- * Hatch for engine compartment access

Bridge

- * Large L shaped lounge with table
- * Wet bar with sink, ice maker and storage
- * Seating on port side across from wet bar
- * Companion and Helm seat
- * Air Conditioning Unit and vents

Helm and Electronics

- * Helm located on bridge, port side
- * Digital Volvo Penta Engine displays
- * Single lever Throttle/shift controls
- * Joystick
- * Raymarine VHF
- * Raymarine Autopilot ST6002
- * Raymarine Chartplotter/Sonar/Radar E80
- * Stereo
- * Trim Tab Controls
- * Remote Spotlight Controls
- * Compass

Engines and Mechanical Equipment

- * Volvo Penta D6 370 hp diesels with 480 hours
- * IPS Pod drives
- * Kohler 9KW Generator with Soundshield with approx. 500 hours.
- * Joystick Docking System
- * All new Batteries 2018 UPGRADE
- * New Helm Control Unit (HCU) 2018 UPGRADE
- * Hydraulic Steering
- * Trim Tabs Hydraulic

Исключения

При продаже яхты исключаются личные вещи владельца.

Отказ от ответственности

Компания предоставляет описание судна или яхты добросовестно, но не может гарантировать точность этой информации, а также не ручается за техническое состояние. Покупатель должен проинструктировать своих агентов или оценщиков исследовать представленную информацию более подробно, по собственному желанию. Продажа судна или яхты, изменение цены или снятие с продажи будет происходить без предварительного уведомления.

ФОТОГРАФИИ

Port Profile



Profile



Profile



Bow



Bow starboard



Starboard Profile



Starboard side from aft



Stern



Port side at dock



Port aft at dock



Stern at dock



Starboard side at dock



Salon facing forward



Salon facing aft



Salon starboard side



Salon port side



Dinette



Galley



Galley



Galley



Galley storage



washer/dryer in storage area



Galley storage



Washer/Dryer



Companionway facing forward



Master Stateroom



Master Stateroom



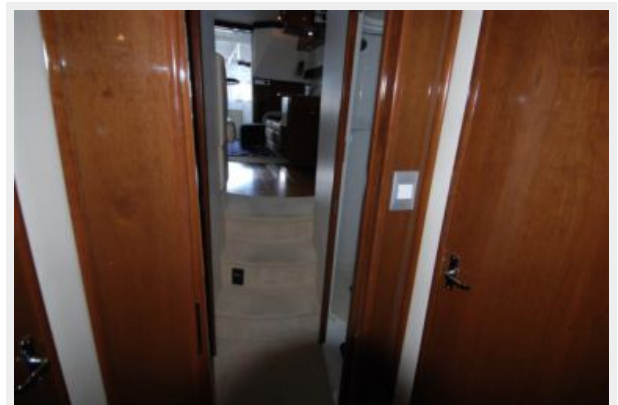
Master shower



Master head



Companionway facing aft



Guest stateroom



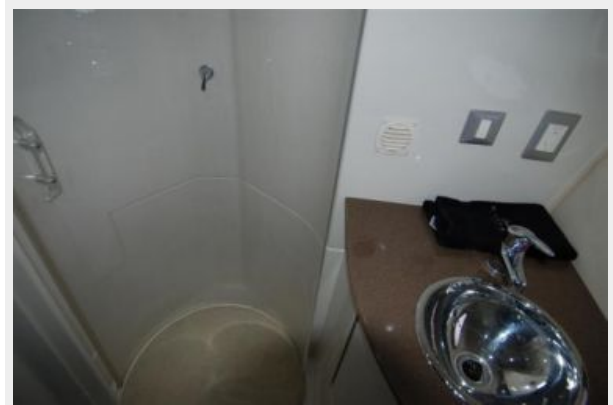
Guest stateroom



Guest head



Guest head



Salon Electrical Panel



Bridge facing aft



Bridge facing forward



Bridge facing forward



Bridge



Helm



Helm



Helm



Bridge Wet Bar



Steps bridge to cockpit



Steps cockpit to bridge



Cockpit



Cockpit



Bow deck



Windlass



Bow Sunpads



Bow



Cockpit Engine Access



Salon Engine Access



Engine Compartment



Engine Compartment



Engine Compartment



Engine Compartment



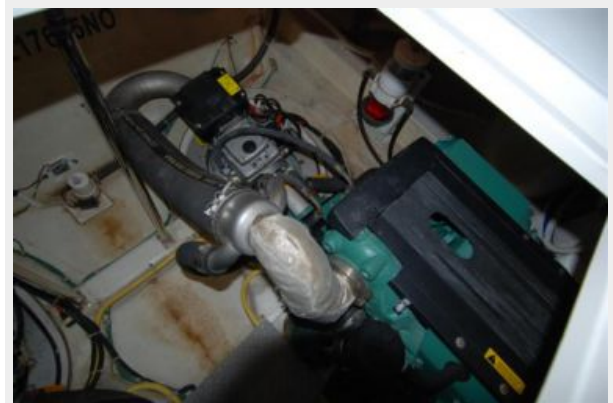
Engine Compartment



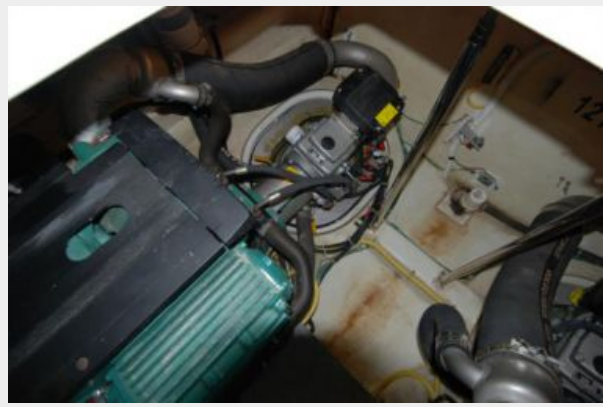
Engine Compartment



Engine Compartment



Engine Compartment



Port Profile



КОНТАКТЫ

Андрей Шестаков (Andrey Shestakov) – ведущий яхтенный брокер отдела продаж яхт и судов компании Shestakov Yacht Sales Inc. Официальный представитель Shestakov Yacht Sales Inc. для русскоговорящих клиентов в центральном офисе компании в Майами/Форт Лодердейл/Флорида/США.

Контактная информация

Email: andrey@shestakovyachtsales.com

Web: shestakovyachtsales.com

Телефоны

Краснодарский край: **+7(918)465-66-44**

США, Майами, Флорида: **+1(954)274-4435**

Время работы

Понедельник – Суббота: **9:00 - 21:00**
EDT

Воскресенье: **Закрито**

Адрес



Harbour Towne Marina, 850 NE 3rd St,
STE 213, Dania, FL 33004