

BELLE — SABRE YACHTS



Судостроитель: [SABRE YACHTS](#)

Год постройки: 2015

Модель: Крейсер

Цена: ЦЕНА ЯХТЫ ПО ЗАПРОСУ

Местонахождение: United States

Длина общая: 48' 0" (14.63m)

Ширина: 15' 4" (4.67m)

Макс. осадка: 3' 9" (1.14m)

Крейс. скорость: 30 Kts. (35 MPH)

Макс. скорость: 34 Kts. (39 MPH)

Купить Belle — SABRE YACHTS а также выбрать подходящую вам яхту из нашего каталога яхт вам поможет опытный яхтенный брокер Андрей Шестаков. На сегодняшний день компания Shestakov Yacht Sales Inc. имеет большое количество яхт в собственном списке продаж, а также тесно сотрудничает со всеми крупными яхтенными производителями по всему миру.

Для того чтобы купить яхту Belle — SABRE YACHTS а также проконсультироваться по любому вопросу связанному с покупкой, продажей, чартером яхт позвоните по телефону **+7(918)465-66-44**.

ОГЛАВЛЕНИЕ

ОГЛАВЛЕНИЕ	2
ХАРАКТЕРИСТИКИ	6
Обзор	6
Основная информация	6
Размеры	6
Скорость, вместимость и масса	6
Размещение	7
Корпус и палуба	7
Информация о двигателе	7
ПОДРОБНОЕ ОПИСАНИЕ	8
Salon	8
Decor	8
Utility Room	8
Galley	8
Master Stateroom	9
Master Head	9
Guest Stateroom	9
Guest Head	10
Helm Station	10
Electronics	10
Deck and Hardtop	11
Deck Hardware	11
Hull	12
Propulsion	12
Steering and Trim System	12
Electrical System	12
Fuel system	13
Fresh water system	13

Waste Disposal	14
Safety	14
Исключения	14
Отказ от ответственности	14
ФОТОГРАФИИ	15
Port Quarter	16
Port Profile	16
Port Profile	16
Port Quarter Sure Shade Awning Extended	16
Starboard Bow View	16
Port Quarter	16
Starboard Quarter View Sure Shade Awning Extended	17
Foredeck	17
Starboard Side Deck	17
Port Side Deck	17
Bow/Anchor/Windlass	18
Hardtop and Webasto Sunroof	18
Helm	18
Main Electrical Panel	18
Spotlight Remote, Light Switches, Bilge Alarms, Wiper Controls	18
Cummins Engine Display and Fusion Stereo	18
Fusion iPhone Pod, Air Con Control, Audio Source Switch	19
Engine Controls and Zeus Joystick	19
Master Stateroom Looking To Starboard	19
Master Stateroom Looking Inboard	19
Master Stateroom Looking To Starboard	20
Master Stateroom Looking Aft	20
Master Stateroom Looking Forward	20
Master Stateroom Looking Forward	20

Master Shower	21
Master Head	21
Master Head	21
Guest Stateroom Looking Aft	21
Guest Stateroom Looking Forward	22
Guest Stateroom	22
Guest Head	22
Guest Stateroom TV and Skylight	22
Guest Shower	23
Galley	23
Galley View Looking Aft	23
Galley View Looking Aft	23
Galley Storage and 2 Burner Cooktop	24
Galley Storage	24
Galley	24
Galley	24
Galley	25
Ice Maker and Bottle Storage In The Salon	25
Salon View Looking Forward Towards The Helm	25
Salon View Looking Forward	25
Salon View Looking Aft From The Helm Area	25
Salon Settee and Table	25
Salon Looking Aft	26
Salon Looking Aft	26
Salon Looking Towards Aft Deck	26
Salon Retractable Window and Bi-Fold Door	26
Access to The Laundry/Utility Room and Extra Berth	27
Access To The Laundry/Utility Room and Extra Berth	27
Utility Room	27

Laundry	27
Laundry Looking To Port	28
Extra Berth Looking To Starboard	28
Aft Deck Main Entry	28
Aft Deck Settee and Table	28
Aft Deck	28
Aft Deck Seating	28
Aft Deck Seating	29
Aft Deck Seating	29
Engine Room Hatch	29
Engine Room Hatch	29
Port Engine Looking Aft	29
Starboard Engine Looking Aft	29
Generator	30
Engine Room Looking Aft	30
Fire Suppression System	30
Marine Air Unites	30
Reverso Oil Change System	30
Water Heater	30
Shore Power Transformer	31
Freedom Tender Lift Hydraulic Pack	31
Battery Bank	31
Starboard Zeus Drive	31
Engine Room Looking Forward Towards Battery Boxes, Breaker Panel, and Storage	31
КОНТАКТЫ	32
Контактная информация	32
Телефоны	32
Время работы	32
Адрес	32

ХАРАКТЕРИСТИКИ

Обзор

Cummins Extended Warranty until January 2022 Recent \$105,000 Price Reduction

Many recent upgrades including: Freedom Tender Lift, SureShade retractable awning in the cockpit, new soft goods in the interior, wifi amplifier, XM/Sirius radio and weather, etc..... BELLE has been maintained with an open checkbook. All maintenance records are available. Engines and Zeus Drives Serviced 8/2018 Bottom Paint August 2018 Generator Serviced August 2018 All Varnish Done in May 2018, August 2018, & March 2019 Full 5 step wax and detail May 2018 Full wax job August 2018 and March 2019

TRADES CONSIDERED

Основная информация

Тип судна: Крейсер

Подкатегория: Express

Модельный год: 2015

Год постройки: 2015

Страна: United States

Верх: Hardtop

Размеры

Длина общая: 48' 0" (14.63m)

Ширина: 15' 4" (4.67m)

Макс. осадка: 3' 9" (1.14m)

Трапы: 14' 4" (4.37m)

Скорость, вместимость и масса

Крейс. скорость: 30 Kts. (35 MPH)

Макс. скорость: 34 Kts. (39 MPH)

Водоизмещение: 37500 Pounds

Чистый вес: 35 Pounds

Вместимость воды: 160 Gallons

Вместимость сточного бака: 70 Gallons

Объем топливного бака: 525 Gallons

Размещение

Всего кают: 2

Спальные места: 4

Всего ком. состава: 2

Койки экипажа: 1

Корпус и палуба

Материал корпуса: Fiberglass

Материал палубы: Fiberglass Sandwich

Цвет корпуса: Flag Blue

Отделка корпуса: Polyethylene

Информация о двигателе

Двигатели: 2

Производитель: Cummins

Модель: QSC 8.3L Zeus

Тип двигателя: Inboard

Тип топлива: Diesel

ПОДРОБНОЕ ОПИСАНИЕ

Salon

- Two Stidd N Series helm chairs mounted on pedestals
- L shaped settee to starboard, foam cushions, storage and Sabre tool drawer under
- High Gloss finished table with hi-low pedestal and angled slide mechanism. Lowers to coffee table height
- Entertainment unit to port including a flat screen LCD TV 32 on lift with DVD player
- Sound deadening, soft headliner panels
- Raised mates L-shaped settee to port of helm
- Stainless steel door to cockpit
- Electrically operated window aft of L-settee
- Swing door at helm to starboard side deck
- Deep chart table forward of L-settee. Fiddles at nav station
- Icemaker to starboard behind helm seating

Decor

- Varnished cherry interior finish
- Screens on all opening ports
- Ocean Air screen/blinds on deck hatches
- Ocean Air pleated blinds on side windows and side door
- Drapes on aft curved windows
- Optional fabric and drapery selections
- Dovetailed, varnished maple drawer boxes

Utility Room

- Work space below salon with work bench, drawers and shelves
- Separate Washer & Dryer
- Additional Berth

Galley

- Solid surface galley counter top
- Stainless steel under mount sink with cover and pull-out faucet
- Soap dispenser
- Isotherm stainless steel stand-up refrigerator (top) and freezer
- Two burner electric cook top

- Convection microwave with stainless steel face
- Customized drawer and shelf storage below counter
- Built-in waste basket. Recycle bin below steps

Master Stateroom

- Spacious island berth athwartship layout with laminated trim
- New Custom Handcraft Innerspring w/ Pillowtop Mattress
- Hull side deadlight over head board
- Shoji style passageway and closet doors
- Shoji style portlight screen panels
- Cherry hull ceilings
- Drawers under berth and in bulkhead aft of berth
- (2) hanging lockers fore and aft of bed
- LED flat screen TV and DVD player
- Teak and holly sole
- Sound deadening soft headliner panels
- Pocket door to master head compartment
- Safe

Master Head

- Private access from master stateroom
- Custom tile in WC and shower sole
- Glass vessel style sink
- High gloss finish over solid cherry counter
- Vanity cabinet below sink
- Storage outboard
- Mirror above vanity, cherry framed
- Separate shower stall with clear bi-fold enclosure and glass tile accent wall within
- Electric shower sump pump
- Opening port to side deck
- Deck hatch with blind/screen overhead
- Ventilation blower
- Stainless steel towel bars

Guest Stateroom

- Spacious island berth, with laminated trim
- Cherry hull ceilings
- Drawers under berth, A/C return grille beside

- Storage lockers, drawers and shelves
- Teak and holly sole
- Sound deadening soft headliner panels
- Pocket door to passageway
- Private access to forward head and shower

Guest Head

- Stainless steel under mount sink
- Shower stall with seat and locker outboard
- Hot and cold pressure water
- Electric shower sump pump
- Storage lockers
- Solid surface vanity top with bull nose
- Towel bars
- Soap dispenser
- Cherry wood trimmed mirror over sink
- Ventilation blower

Helm Station

- Cummins DTS single lever electronic controls with Cummins/Mercruiser Joystick Control
- Cummins Smart Craft display (engine data, tank levels, vessel data, alarms)
- Triple windshield wipers with washers
- Kahlenberg Horn
- Remote for spotlight
- Ritchie Compass
- Switch controls for horn, running lights, anchor light, engine room blower and optional equipment
- (2) Stidd N Series Helm Chairs with Ultraleather fabric, mounted on pedestals

Electronics

- (2) Garmin 8215 Multifunction Displays
- Garmin Bluechart G2 Vision Chip (Florida, US East Coast & Bahamas)
- DSM Sounder Module
- Airmar Transducer and Fairing Block
- Garmin 604 HD 4 inch Open Array Radar
- Garmin 200i VHF w/ Dual 8 inch Shakespeare Antennas
- Intellian i4 Satellite TV with 3 DTV receivers and an additional Dummy Dome to Conceal All Antennas

- Video Piped to Plotters
- All Domes/Antennas Painted Sabre White
- Engine Room Cameras
- Fusion stereo with Sirius/XM radio
- XM Weather displayed on Garmin monitors
- Aigean Dual Band Wifi Amplifier with Dual Band Cisco Router

Deck and Hardtop

- ISO NPG gelcoat
- VIP resin infused biaxial E-glass with balsa core
- Webasto glass sunroof over the helm with an Ocean Aire shade
- Molded-in anti-skid deck surfaces
- Companionway door to port
- Sliding windows in salon on cabin sides
- Electric opening window in salon aft bulkhead
- Hinged access door to side deck at helm
- Flush, outward opening, transom door with latch
- Anchor locker with slam latch
- Large lazarette/engine room access hatch in cockpit sole with compression latches
- Teak cockpit sole and swim platform
- Custom covers for entire cockpit, cockpit seating, transom and windshield
- SureShade ATF Cockpit awning/shade
- Freedom Lift / Tender Lift

Deck Hardware

- 1 1/4 inch Diameter type 316 stainless steel perimeter rail system
- (6) 12 inch Stainless steel cleats (2 fwd, 4 mid ship)
- (1) 10 inch Stainless steel cleat to starboard of windlass as anchor rode tie off
- (4) Custom cast stainless steel mid-rail line chocks
- (2) Custom cast stainless steel line chocks forward
- (2) Stainless steel bollard style mooring cleats aft
- Custom stainless steel bow pulpit with dual anchor roller for 44# CQR or Delta anchor and lunch hook
- Quick anchor windlass, electric rope-chain type
- Teak flag staff and socket on taffrail
- Burgee staff on bow pulpit
- (6) Low Profile stainless steel hatches w/screens
- (6) Custom stainless steel opening port lights
- Teak toe rails
- Teak cabin side eye-brow

- Custom cast stainless steel SABRE medallion
- Raw Water Washdown at Bow

Hull

- Modified Deep V Planing hull design, with pod drive tunnels
- 14 degree deadrise at transom, 23 degree deadrise amidships
- ISO NPG white gelcoat w/vinylester back-up resin
- Bottom, topsides and transom VIP resin infused biaxial E-glass with Corecell SAN foam core
- Stringer system biaxial E-glass with foam core
- VIP Resin Infused E-glass swim platform with molded-in anti-skid surface
- Hull side rubbing strakes
- PVC rub rail with stainless steel cap
- Painted (Urethane) double boot to
- Custom shelf in bilge for storage above batteries

Propulsion

Cummins Extended Warranty until January 2022

- Twin Cummins QSC 8.3 550 hp electronic, fresh water-cooled engines with Zeus 3800 pod drives, with integrated steering and trim
- 120A, 12V alternators each engine
- (2) Exhaust bi-pass mufflers
- Engine room blower
- Engine room vent ducts
- Engine room floor with FRP anti-skid
- White gelcoated engine room
- Mylar Face Foam Noise Barrier

Steering and Trim System

- CMD helm, with joystick.
- Trim tabs integrated in CMD Zeus pod drives
- Autopilot integrated in CMD Zeus system
- "Skyhook" GPS position hold system with dedicated GPS receiver

Electrical System

- Two AGM Group 31 dedicated engine start batteries

- Three AGM 4D deep cycle ship's service batteries
- One AGM Group 24 generator start battery
- Remote control battery switches with controls at helm
- Manual emergency battery crossover switch
- Illuminated main circuit breaker distribution
- Digital battery monitor
- St. Maarten amber cabin reading lights
- High output LED lights in the overhead
- LED strip lighting in appropriate locations
- LED engine room lighting
- Tri-color lights over helm station, red, white blue
- Cockpit courtesy lights
- Marine-grade, tinned wire throughout
- 12VDC USB chargers at helm and in all cabins
- Onan 13.5 kw generator including:
 - Onan E series display
 - Dedicated start battery
 - Water drop muffler
 - Cooling water intake strainer
 - Sound shield
 - Transfer switch
- 50A shore power service with Glendinning Cablemaster & 70 ft. cord
- Isolation transformer
- Illuminated main circuit breaker distribution panel
- Digital AC system monitor
- 120V GFCI protected outlets in each cabin and engine room
- 50 amp, 3-bank battery charger
- Reverse cycle heat/ air conditioning in (3) zones
- Underwater Lights

Fuel system

- (2) 263 USG diesel fuel tanks port and starboard
- Dual Racor fuel filters with water in fuel probes
- (2) Diesel deck fill plates

Fresh water system

- Water capacity 160 gals
- Stainless steel, 20 gal. water heater, operates on 110-VAC or engine heat
- Temperature control valve on hot water supply
- Hot and cold water pressure system 12V

- Fresh water spigot in engine room
- Transom shower, hot and cold
- Shore water inlet with filter
- Silent freshwater pump system

Waste Disposal

- Polyethylene holding tank with 70 gallon capacity
- Jabsco Quiet Flush fresh water MSD in guest head
- Tecma Eco MSD in master head
- Diaphragm waste pump on holding tank

Safety

- Triple chrome trumpet horn with compressor
- Fire extinguishers, (5) at 2 1/2 lbs
- Marelon sea valves on all thru-hull fittings below waterline
- Bonding system to safeguard against galvanic corrosion
- Automatic fire extinguishing discharge system in engine space with override
- (3) Automatic 12V electric bilge pumps
- (3) High water switches and alarm

Исключения

При продаже яхты исключаются личные вещи владельца.

Отказ от ответственности

Компания предоставляет описание судна или яхты добросовестно, но не может гарантировать точность этой информации, а также не ручается за техническое состояние. Покупатель должен проинструктировать своих агентов или оценщиков исследовать представленную информацию более подробно, по собственному желанию. Продажа судна или яхты, изменение цены или снятие с продажи будет происходить без предварительного уведомления.

ФОТОГРАФИИ



Port Quarter



Port Profile



Port Profile



Port Quarter Sure Shade Awning Extended



Starboard Bow View



Port Quarter



**Starboard Quarter View Sure Shade Awning
Extended**



Foredeck



Starboard Side Deck



Port Side Deck



Hardtop and Webasto Sunroof



Bow/Anchor/Windlass



Helm



Main Electrical Panel



Cummins Engine Display and Fusion Stereo



Spotlight Remote, Light Switches, Bilge Alarms, Wiper Controls



Fusion iPhone Pod, Air Con Control, Audio Source Switch



Engine Controls and Zeus Joystick



Master Stateroom Looking To Starboard



Master Stateroom Looking Inboard



Master Stateroom Looking To Starboard



Master Stateroom Looking Aft



Master Stateroom Looking Forward



Master Stateroom Looking Forward



Master Shower



Master Head



Master Head



Guest Stateroom Looking Aft



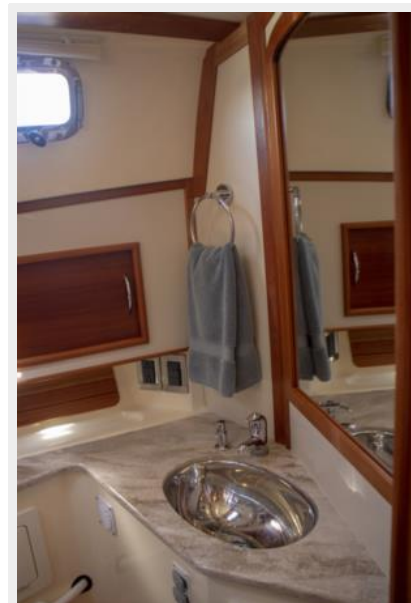
Guest Stateroom Looking Forward



Guest Stateroom



Guest Head



Guest Stateroom TV and Skylight



Guest Shower



Galley



Galley View Looking Aft



Galley View Looking Aft



Galley Storage and 2 Burner Cooktop



Galley Storage



Galley



Galley



Galley



Ice Maker and Bottle Storage In The Salon



Salon View Looking Forward



Salon View Looking Forward Towards The Helm



Salon View Looking Aft From The Helm Area



Salon Settee and Table



Salon Looking Aft



Salon Looking Aft



Salon Looking Towards Aft Deck



Salon Retractable Window and Bi-Fold Door



Access to The Laundry/Utility Room and Extra Berth

Access To The Laundry/Utility Room and Extra Berth



Utility Room



Laundry



Laundry Looking To Port



Extra Berth Looking To Starboard



Aft Deck Main Entry



Aft Deck Settee and Table



Aft Deck



Aft Deck Seating



Aft Deck Seating



Aft Deck Seating



Engine Room Hatch



Engine Room Hatch



Port Engine Looking Aft



Starboard Engine Looking Aft



Generator



Engine Room Looking Aft



Fire Suppression System



Marine Air Unites



Reverso Oil Change System



Water Heater



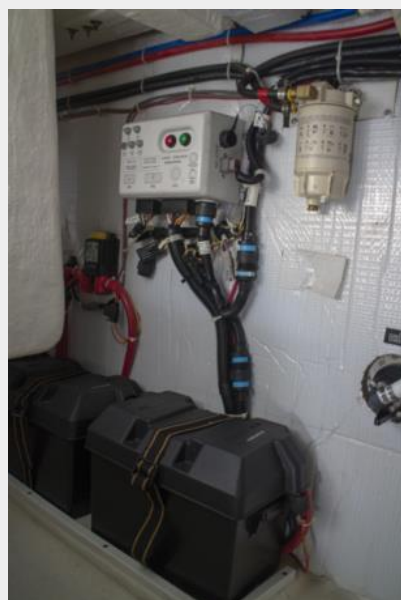
Shore Power Transformer



Freedom Tender Lift Hydraulic Pack



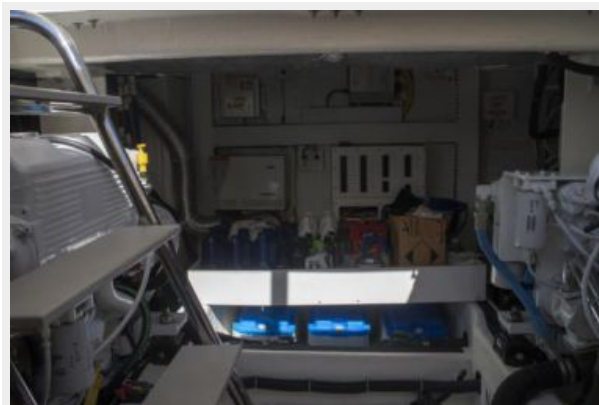
Battery Bank



Starboard Zeus Drive



Engine Room Looking Forward Towards Battery Boxes, Breaker Panel, and Storage



КОНТАКТЫ

Андрей Шестаков (Andrey Shestakov) – ведущий яхтенный брокер отдела продаж яхт и судов компании Shestakov Yacht Sales Inc. Официальный представитель Shestakov Yacht Sales Inc. для русскоговорящих клиентов в центральном офисе компании в Майами/Форт Лодердейл/Флорида/США.

Контактная информация

Email: andrey@shestakovyachtsales.com

Web: shestakovyachtsales.com

Телефоны

Краснодарский край: **+7(918)465-66-44**

США, Майами, Флорида: **+1(954)274-4435**

Время работы

Понедельник – Суббота: **9:00 - 21:00**
EDT

Воскресенье: **Закрето**

Адрес



Harbour Towne Marina, 850 NE 3rd St,
STE 213, Dania, FL 33004