

DRIFTIN DAYS — ST. FRANCIS



Builder: ST. FRANCIS

Year Built: 2004

Model: Catamaran

Price: PRICE ON APPLICATION

Location: United States

LOA: 44' 0" (13.41m)

Beam: 23' 6" (7.16m)

Max Draft: 3' 6" (1.07m)

Our experienced yacht broker, Andrey Shestakov, will help you choose and buy a yacht that best suits your needs **Driftin Days — ST. FRANCIS** from our catalogue. Presently, at Shestakov Yacht Sales Inc., we have a wide variety of yachts available on our sale's list. We also work in close contact with all the big yacht manufacturers from all over the world.

If you would like to buy a yacht **Driftin Days — ST. FRANCIS** or would like help answering any questions concerning purchasing, selling or chartering a yacht, please call **+1(954)274-4435**

TABLE OF CONTENTS

TABLE OF CONTENTS	2
SPECIFICATIONS	4
Overview	4
Basic Information	4
Dimensions	4
Speed, Capacities and Weight	5
Accommodations	5
Hull and Deck Information	5
Engine Information	5
DETAILED INFORMATION	6
History	6
Accommodations & Layout	6
Galley and Dinette	7
Mechanical	7
Sails & Rigging	7
Deck Equipment	8
Electronics & Navigation	8
Electrical	9
Safety Equipment	9
Disclaimer	9
Exclusions	9
Disclaimer	9
PHOTOS	11
CONTACTS	18
Contact details	18
Telephones	18
Office hours	18
Address	18

SPECIFICATIONS

Overview

- CURRENTLY CRUISING ENROUTE FROM GRENADA TO FORT PIERCE FLORIDA
- Strong and Seaworthy, Proven Ocean Passagemaker!
- Designed by Angelo Lavranos and custom made in South Africa, she has had 3 owners who each have upgraded and maintained her to a high standard.
- She has travelled from South Africa to Bahamas, Florida to Turkey and back, Chesapeake, Bahamas and Eastern Carribean.
- USCG documented vessel
- Owner version, 3 cabin 2 head layout
- Custom fiberglass hardtop and enclosure
- Arch with dingy and davits
- Self sufficient at anchor with watermaker, solar panels, wind generator
- Both US 110V and European 220V plugs
- Reverse cycle air conditioning
- Updated Sails
- New batteries
- 2008 Raymarine electronics
- GPS, Radar, Autopilot
- Tons of Safety Equipment, Liferaft, Drogue, Ditch kit, etc...
- Please read the comprehensive listing for details and ownership history

Basic Information

Category: Catamaran

Model Year: 2004

Year Built: 2004

Country: United States

Dimensions

LOA: 44' 0" (13.41m)

Beam: 23' 6" (7.16m)

Max Draft: 3' 6" (1.07m)

Clearance: 62' 0" (18.90m)

Speed, Capacities and Weight

Water Capacity: 100 Gallons

Holding Tank: 35 Gallons

Fuel Capacity: 100 Gallons

Accommodations

Total Cabins: 3

Total Heads: 2

Hull and Deck Information

Hull Material: Fiberglass

Engine Information

Engines: 2

Manufacturer: Yanmar

Model: SD20

Engine Type: Sail Drive

Fuel Type: Diesel

DETAILED INFORMATION

History

- This St Francis was custom made in South Africa and sailed to Georgetown, Bahamas by the first owners who then dropped the anchor and used her as a floating condo for 4 years, putting 500 hours on the engines charging batteries and heating water.
- The second owner purchased her in 2008 in Florida and equipped her with all new Raymarine electronics, watermaker, batteries and installed a custom rub rail. She spent every hurricane season in Rio Dulce. In 2010 and they did an extensive 55K outfitting in preparation of an Atlantic voyage. This included the custom hardtop bimini, full enclosure, Isolation transformer, wind generator, upgraded to 50A shore power, new bottom with barrier coat and bottom paint and serviced all systems. She then travelled to Turkey and the Med and back to Florida after completing their dream cruise.
- The current owners purchased her in 2013 with 1400 hours on the engines and continued to update for comfortable cruising. Additional Captain seat added in cockpit, fresh awlgrip paint on deck, new sails, batteries, etc. They are in their 5th year of cruising the Bahamas and Eastern Carribean using her during the winter months of January - March and storing her on the hard for the other 9 months.
- She is currently in Grenada with plans to bring her to Puerto del Rey, Puerto Rico.
- She has been maintained to a high standard and is ready for the next owner to enjoy!

Accommodations & Layout

- She is well equipped for living aboard and comfortable cruising 3 stateroom, 2 head layout
- Generous salon and navigation station
- Panoramic windows
- V shaped settee with Water Buffalo leather salon couch
- Custom hi-gloss finish dining table with storage underneath 2008
- Navigation station
- Teak and carpet
- Cherrywood interior cabinets
- Easy to maintain fiberglass interior finish
- Double sided galley down in port hull
- Large pantry and utility room, port aft
- Study complete with desk, shelves and cupboards, port fwd
- 2) Queen extra long berths, port and starboard fwd
- Hanging lockers and storage
- (1) 3/4 berth with upholstered bench and cabinets, stbd aft
- Library bookshelves and cabinets, stbd hull
- Master head features a sitz bath tub and shower in starboard fwd hull
- Second head and shower port aft

- Interior lighting
- 20 Lewmar opening hatches and ports
- (2) Escape hatches
- 5 Cabin fans

Galley and Dinette

- Double sided galley down in port hull
- Large pantry and storage room
- Deep top loading, well insulated Freezer
- Vitrofrigo Refrigerator
- Force 10 Propane Stove/Oven/Broiler
- (3) Fiberglass propane tanks
- SS double sink
- Formica countertops

Mechanical

- (2) Yanmar diesel 27hp each engines located midship and inboard of each hull
- 2300 hours each
- SD20 Saildrives with 2 bladed props
- Cruise 7 knots, Max 8 knots
- (2) 50 gallon fuel tanks built into the hulls
- (2) 50 gallon water tanks built into the hulls
- Village Marine 10 gph watermaker, 2008
- (2) 16,000 btu reverse cycle air conditioning, 2010
- Isotherm 7 gal hot water heater, engine exchanger
- One manual head
- One manual head and 35 gal holding tank
- (4) Automatic bilge pumps
- (2) Manual bilge pumps
- Extensive inventory of spares

Sails & Rigging

- Doyle Mainsail, 2013, fully battened and 3 reef points
- Harken batt cars
- Stack pack with lazy jacks
- Harken roller furler
- Doyle Genoa, 2014
- Quantum asymmetrical spinaker, 2010

- Lewmar traveller
- Aluminum mast and boom
- Boom vang
- Bridge clearance 62'
- SS wire standing rigging, good condition
- Dacron running rigging, needs replacement
- (2) Lewmar 52 ST two speed winches
- Lewmar 40 ST two speed winch

Deck Equipment

- Custom Fiberglass Hardtop bimini, 2010
- Full enclosure and privacy shades
- Captain seat at helm
- 2nd Captain seat added to port, 2013
- Cockpit table
- Cockpit cushions
- Stern Arch with dingy davits
- Swim Platform
- Adventure Marine dingy cradle
- 12' AB RIB Dingy, 2008
- 15hp Yamaha outboard, 2008
- Lofrans Tigress windlass
- Delta primary anchor
- 115' 3/8" anchor chain, new 2018
- 150' 3/4" rode
- Fortress FX23 and Danforth type secondary anchors
- 8" Lewmar deck cleats
- (2) Bow pulpit seats
- Lifeline and stanchions
- Trampolines
- Magma grill, 2014
- Deck shower with hot water
- Lines and fenders
- Top deck was alwgripped, 2013

Electronics & Navigation

- (2) Raymarine C70 Chartplotter GPS, 2008
- Raymarine 24kw Radar, 2008
- AIS, 2010
- Masthead wind indicator, 2010

- Raymarine Tri-data, wind, speed, depth
- Raymarine Autopilot
- ICOM IC-M502 VHF Radio
- Garmin handheld VHF
- Sunto compass

Electrical

- (6) 105 amp each batteries (315AH), new 2017
- (4) Kyocera solar panels (390 watts total)
- Air X wind generator
- Vitron 2000 battery charger
- Link 10 battery monitor
- Acme isolation transformer
- Dual 50 amp alternators, 1 new 2018
- Both US 110V and European 220V shore power
- 50' 50 amp and 50' 30 amp shore power cords
- 6 electrical outlets

Safety Equipment

- 6 man Survival Liferaft
- Drogue
- Medical kit
- Ditch kit
- Flares, strobes, fog horn
- Life vests

Disclaimer

The Company offers the details of this vessel in good faith but cannot guarantee or warrant the accuracy of this information nor warrant the condition of the vessel. A buyer should instruct his agents, or his surveyors, to investigate such details as the buyer desires validated. This vessel is offered subject to prior sale, price change, or withdrawal without notice.

Exclusions

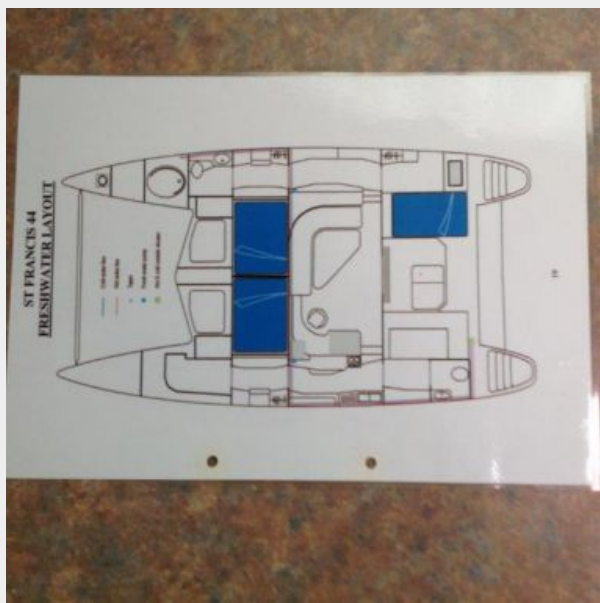
Owner's personal belongings.

Disclaimer

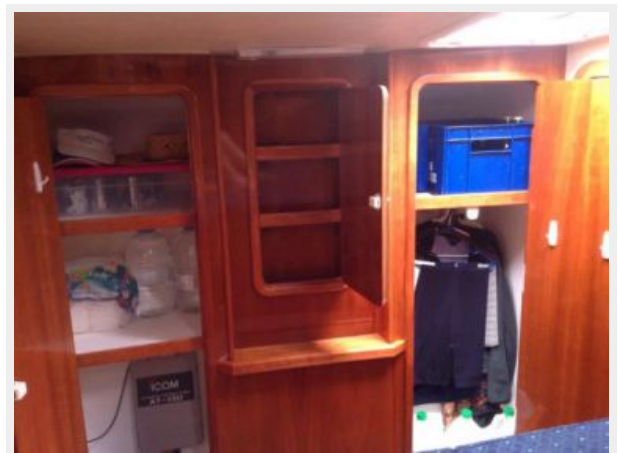
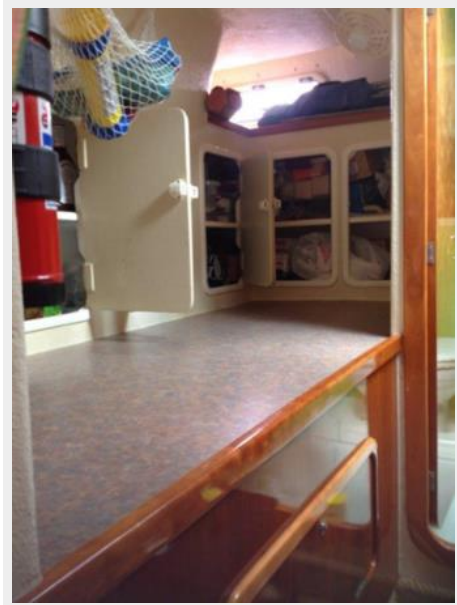
The Company offers the details of this vessel or yacht in good faith but cannot guarantee or warrant the accuracy of this information nor warrant the condition of the vessel. A buyer should instruct his representatives, agents, or his surveyors, to investigate such details as the buyer desires validated. This vessel or yacht is offered subject to prior sale, price change, or withdrawal without notice.

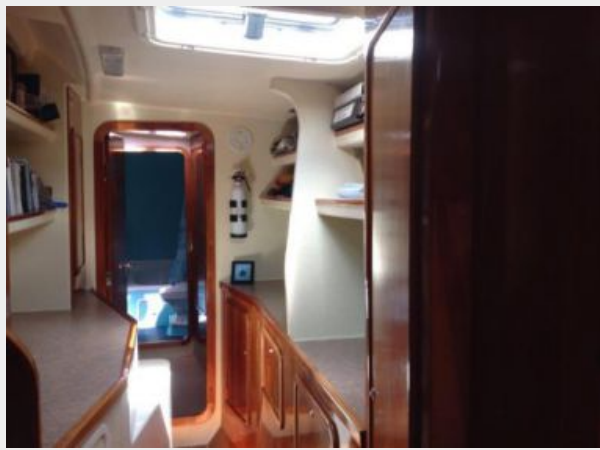
PHOTOS















CONTACTS

Andrey Shestakov, leading yacht broker of the sales department of Shestakov Yacht Sales Inc. Shestakov Yacht Sales Inc., the official representative of the Miami/Fort Lauderdale FL headquarters.

Contact details

Email: andrey@shestakovyachtsales.com

Web: shestakovyachtsales.com/en/

Telephones

USA: +1(954)274-4435

Office hours

Monday – Saturday: **9:00 - 21:00** EDT

Sunday: **closed**

Address



Harbour Towne Marina, 850 NE 3rd St,
STE 213, Dania, FL 33004