

FNN — MARQUIS



Builder: MARQUIS

Year Built: 2013

Model: Motor Yacht

Price: PRICE ON APPLICATION

Location: Russian Federation

LOA: 63' 0" (19.20m)

Beam: 17' 2" (5.23m)

Max Draft: 4' 5" (1.35m)

Cruise Speed: 21 Kts. (24 MPH)

Max Speed: 30 Kts. (35 MPH)

Our experienced yacht broker, Andrey Shestakov, will help you choose and buy a yacht that best suits your needs **FNN — MARQUIS** from our catalogue. Presently, at Shestakov Yacht Sales Inc., we have a wide variety of yachts available on our sale's list. We also work in close contact with all the big yacht manufacturers from all over the world.

If you would like to buy a yacht **FNN — MARQUIS** or would like help answering any questions concerning purchasing, selling or chartering a yacht, please call **+1(954)274-4435**

TABLE OF CONTENTS

TABLE OF CONTENTS	2
SPECIFICATIONS	3
Overview	3
Basic Information	3
Dimensions	4
Speed, Capacities and Weight	4
Accommodations	4
Hull and Deck Information	4
Engine Information	4
DETAILED INFORMATION	5
63 Marquis Yachts	5
Exclusions	6
Disclaimer	6
PHOTOS	8
CONTACTS	28
Contact details	28
Telephones	28
Office hours	28
Address	28

SPECIFICATIONS

Overview

63 MARQUIS SPORT YACHT "FNN" was delivered to the first owner and first registered in 2013, with full service history available up to date! Boat is currently located on the Black Sea, and available for visit with prior notice. Owner is keen to sell until the end of 2018 season, all reasonable offers are welcomed!

The **Marquis 630 Sport Yacht** is a punchy combination of Volvo joystick control and the most powerful IPS available. The **Marquis 630 Sport Yacht** is a well-engineered, expertly crafted, and elegantly designed performance cruiser, with plenty of get-up-and-go.

This four-stateroom yacht boasts beautifully appointed master, VIP, and guest accommodations. Its stunning open salon shines with warm woods, lustrous satin finish, expert joiner work, and premium materials. Natural light pours through large windows, and sliding doors lead to an elegant cockpit and, via descending twin staircases, to a gracious swim platform. The fully equipped galley lies just steps away, and an integrated lower helm station provides additional cruising convenience.

Marquis Yachts is an American premium yachts manufacturer, who has been making its customers happy with its luxury high-speed yachts for more than 50 years already. The great status of this company has been acknowledged by World Yacht Trophy awards and several "Grand Prix" at the international boat shows in Monaco, Dubai and Miami.

The uniqueness of **Marquis Yachts** underlines the fact, that each boat is assembled by hand. A great amount of focus is given to the interior and exterior designs and to the creating of ergonomic and comfortable living space. In addition, all the work is done by in-house specialists without any outsourcing and every manufacturing process passes strict quality control. The designers' team includes world famous Italian designers Dan Lenard and Carlo Nuvolari that are responsible for creating a number of great yachts. For those reasons, the **Marquis Yachts** is a powerful combination of unmatched quality and elegance every sophisticated yachtsman would appreciate.

Basic Information

Category: Motor Yacht

Sub Category: Flybridge

Model Year: 2013

Year Built: 2013

Country: Russian Federation

Fly Bridge: Yes

Dimensions

LOA: 63' 0" (19.20m)

Beam: 17' 2" (5.23m)

Max Draft: 4' 5" (1.35m)

Speed, Capacities and Weight

Cruise Speed: 21 Kts. (24 MPH)

Max Speed: 30 Kts. (35 MPH)

Displacement: 71500 Pounds

Water Capacity: 255 Gallons

Holding Tank: 160 Gallons

Fuel Capacity: 1030 Gallons

Accommodations

Total Cabins: 4

Captain Cabin: True

Hull and Deck Information

Hull Material: Fiberglass

Interior Designer: Nuvolari Leonard

Engine Information

Manufacturer: Volvo Penta

Model: IPS D13

Engine Type: Inboard

Fuel Type: Diesel

DETAILED INFORMATION

63 Marquis Yachts

ACCOMODATIONS

This four-stateroom yacht boasts beautifully appointed master, VIP, and guest accommodations.

Salon— A large sliding door provides access to the warmly appointed, open salon, with its comfortable lounge seating, satin-finished countertops and flooring, fully equipped entertainment package with wall mounted theater speakers, and gracious designer touches.

Lower Helm— The comfortable, roomy lower helm station features an adjustable-height helm seat with swivel pedestal, arm rests and a flip-up bolster, plus companion seating, tilt steering wheel, stereo speakers, all the necessary instrumentation, and outstanding views through the tinted wrap-around windshield

Galley— Just steps down from the salon is the 630's galley, which boasts a Vitrefrigo® refrigerator/freezer, electric three-burner range, microwave/convection oven/broiler, and liquor cabinet with glass shelves and built-in storage for bottles and glassware.

Master Head— The large master head features marble flooring, cabinets with satin walnut finish, solid walnut door, stone countertop and backsplash, elegant vessel sink, and walk-in tiled shower.

Master Stateroom— These spacious accommodations incorporate an island queen-size bed with innerspring pillow top mattress and under-berth storage, a desk and computer workstation, two walk-in closets and plenty of drawer, cabinet and shelf space for optimum cruising comfort and convenience.

VIP Stateroom— The 630's well-appointed VIP stateroom includes a step-up island queen-size bed with innerspring pillow top mattress and plenty of storage, all bathed in natural light courtesy of the large overhead hatch. The 630 also features a twin-berth guest stateroom, and both guest accommodations have private access to the guest head.

INTERIOR AMENITIES - Valentina Designer Contemporary Interior - Walnut Wood

SALON - Opening Salon Portholes - 42" LCD TV - Stereo with Surround System - Dishwasher - Central Vacuum System

GALLEY - Countertops: Granite - Electrical outlets - Flooring: Granite - Microwave/convection oven/broiler Sharp®, built in, brushed stainless steel finish - Range:

Electric, 3burner, Ceran® top, with brushed stainless steel backsplash - Range hood: Brushed stainless steel, with 2 lights, exhaust fan, outside vent - Refrigerator/freezer: Jenn Air®, full size

French door, bottom freezer, brushed stainless steel finish - Sink: Two basin, stainless steel, under mounted - 9x Storage cabinets - 8x Storage drawers

CABIN AMENITIES - 4x Cabin Version - 32" Master Stateroom TV and DVD - Master Stateroom Stereo with Apple iPod Dock - Washer and Dryer - Teak Head Shower - Teak Seat Master Shower - 19" VIP Stateroom TV and

DVD - VIP Stateroom Stereo with Apple iPod Dock - Third Stateroom 19" TV and DVD - Third Stateroom Stereo with Apple iPod Dock - Fourth Stateroom - Fourth Stateroom 15" TV - Double

Crew Quarters - Crew Quarter 15" TV and DVD/Radio - Refrigerator Crew Quarter - Microwave Crew Quarter

TECHNICAL EQUIPMENT

MACHINERY - Main Engines: 2 x Volvo D900 - Power: 900 HP each (662 kW) each @ 2300 rpm - Propulsion Type: Twin Screw, Volvo IPS - Propellers: 4 Blade each NiBral, 30 inch, counter rotational - Trim tabs: Stainless steel, electric 4ea. 36 x 9 - Underwater engine exhaust discharge with automatic bypass - Volvo Penta™ IPS joystick control system **AUXILIARY MACHINERY & ELECTRICAL SYSTEM** - Generator: 20 kW 50 Hz KOHLER® with sound shield, dedicated 31 series AGM battery, 5 year warranty, premium electrical system, & automatic power source control - Dockside inlet: CATV with 50' (15.2 m) of white cord - 8x Batteries: Douglas, 8D series, marine (12V) cold cranking rating of 1,375A, reserve capacity of 430min at 25A draw, 200A/hr rating [(4) engine starting, (4) ship service] - 2x Batteries: 8D Absorbed glass Matt (AGM), Accessory. (4) 31 Series, Absorbed Glass Matt (AGM) Engine starting, (1) 31 Series, Absorbed Glass Matt (AGM) Generating Starting - Courtesy lights: LED - Cable masters: Dual Glendenning - 1x Battery charger: 80A, accessory, (1) 60A accessory built into Inverter, (1) 80A Engine, (1) 25A Generator - Shore 1 to Shore 2 Combiner Switch **TANK CAPACITIES** Fuel capacity: 1,030 Gallons / 3900 L Fresh water: 255 Gallons / 965 L Waste Tanks: 160 Gallons / 605 L - Overboard Discharge System - Fresh Water Wash down Only - Cockpit Shower **NAVIGATION and COMMUNICATION EQUIPMENT** - Bridge and Lower Helm Navigation Package / Radar - Bridge and Lower Helm Monitor System - Autopilot - Compass: Ritchie® Navigator 4,5", (11,4 cm) flush mount, illuminated, dual read **EXTERIOR AMENITIES** - Aston Brown Metallic Paint - Single coat of Black Hull Bottom - Underwater Lights - Hydraulic Lifting Platform - Swimming Ladder - Passerelle - Bridge and Lower Monitor System - Bridge with Lounge and Sun pad - Hard top with Opening Sunroof - Exterior Upgrade Package - Bridge Stereo - Teak Decking Swim Platform - Helm & Seat Covers - Cockpit Table - Foredeck Sun pad - Single Grill for Bridge Wet Bar - Bridge Ice maker - Windlass with Capstan - Dual Stern Capstan Winches - Mooring Cleats - Refrigerator for Bridge Wet Bar - Exterior Décor Pillows - Mechanism Bridge TV - Windlass package: Quick Antares® 1500 with 75 lb. (34 kg) stainless steel plow anchor & 300' (91.4 m) of 3/8" (9.5 mm) grade 40 chain

Exclusions

Owner's personal belongings.

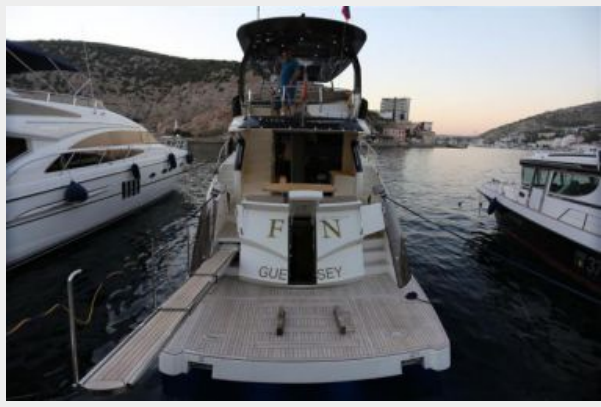
Disclaimer

The Company offers the details of this vessel or yacht in good faith but cannot guarantee or warrant the accuracy of this information nor warrant the condition of the vessel. A buyer should

instruct his representatives, agents, or his surveyors, to investigate such details as the buyer desires validated. This vessel or yacht is offered subject to prior sale, price change, or withdrawal without notice.

PHOTOS



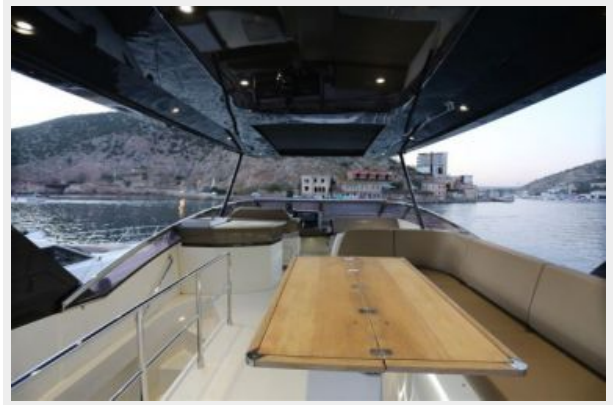










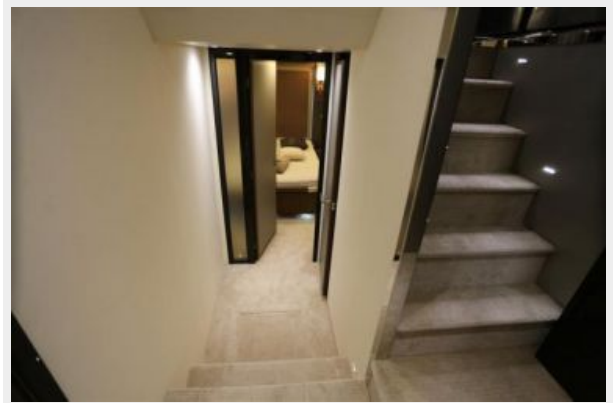




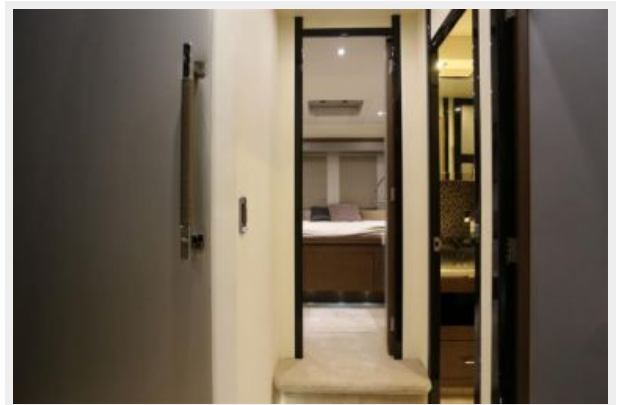
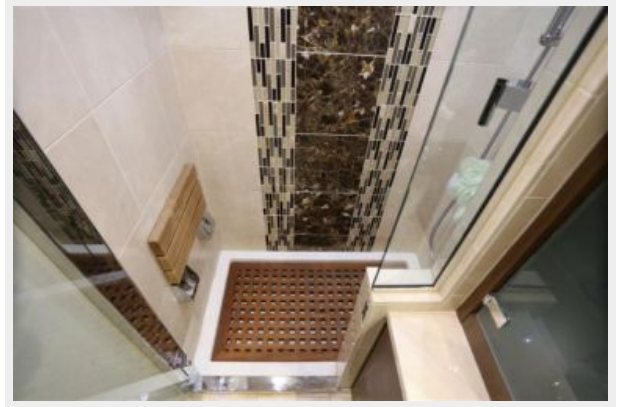


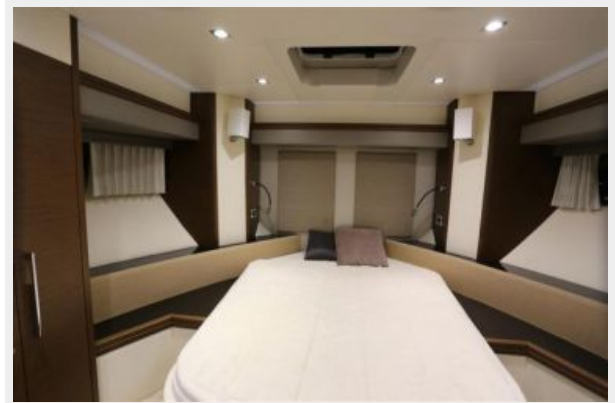
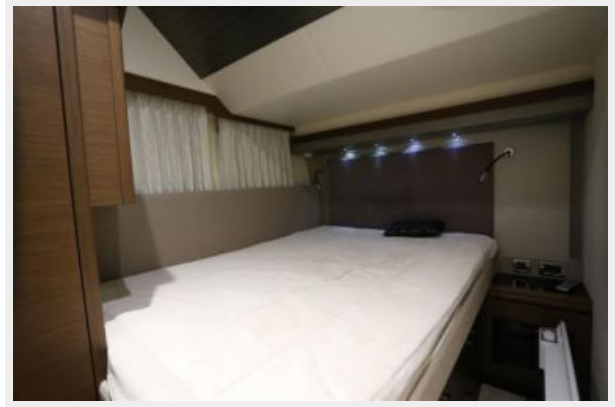




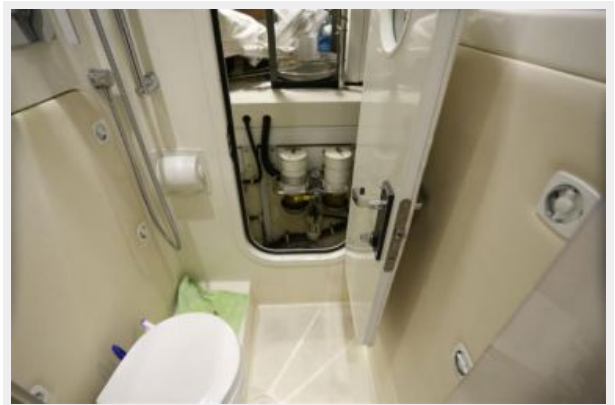
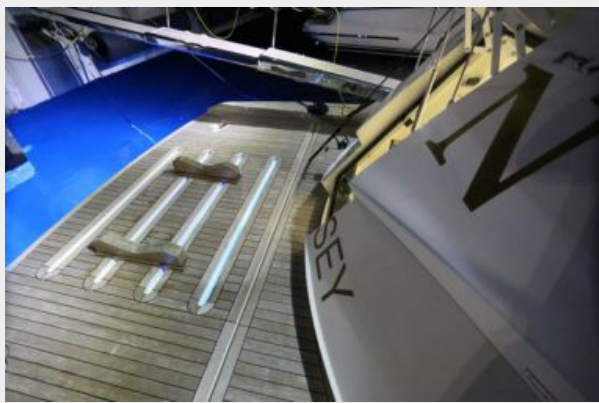
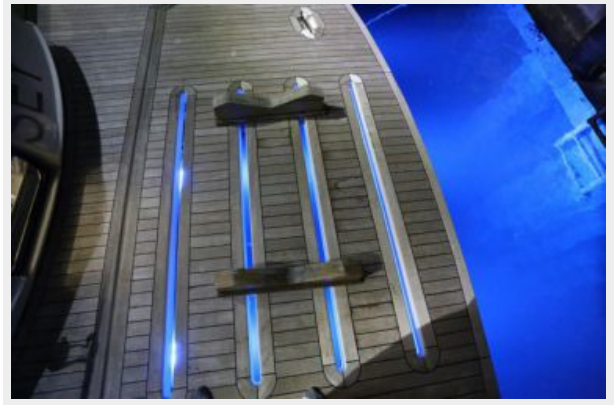
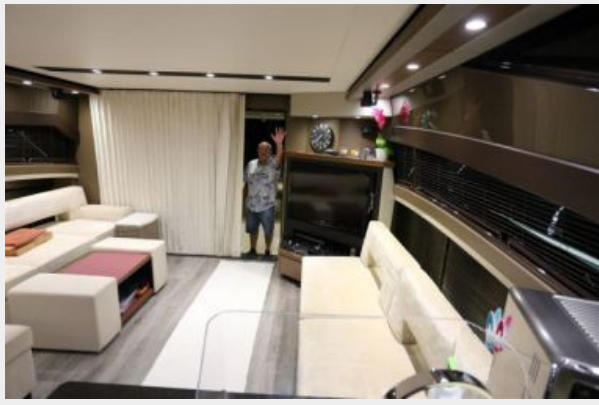




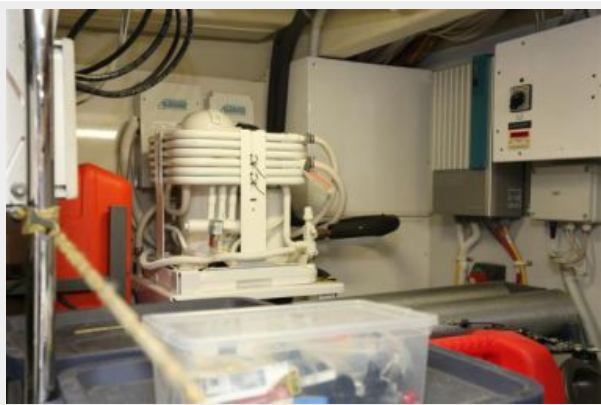














CONTACTS

Andrey Shestakov, leading yacht broker of the sales department of Shestakov Yacht Sales Inc. Shestakov Yacht Sales Inc., the official representative of the Miami/Fort Lauderdale FL headquarters.

Contact details

Email: andrey@shestakovyachtsales.com

Web: shestakovyachtsales.com/en/

Telephones

USA: +1(954)274-4435

Office hours

Monday – Saturday: **9:00 - 21:00** EDT

Sunday: **closed**

Address



Harbour Towne Marina, 850 NE 3rd St,
STE 213, Dania, FL 33004