

BRIAR PATCH — SUMERSET HOUSEBOATS



Builder: SUMERSET HOUSEBOATS

Year Built: 2005

Model: Houseboat

Price: PRICE ON APPLICATION

Location: United States

LOA: 90' 0" (27.43m)

Beam: 18' 0" (5.49m)

Max Draft: 3' 7" (1.09m)

Cruise Speed: 6 Kts. (7 MPH)

Max Speed: 8 Kts. (9 MPH)

Our experienced yacht broker, Andrey Shestakov, will help you choose and buy a yacht that best suits your needs **BRIAR PATCH — SUMERSET HOUSEBOATS** from our catalogue. Presently, at Shestakov Yacht Sales Inc., we have a wide variety of yachts available on our sale's list. We also work in close contact with all the big yacht manufacturers from all over the world.

If you would like to buy a yacht **BRIAR PATCH — SUMERSET HOUSEBOATS** or would like help answering any questions concerning purchasing, selling or chartering a yacht, please call **+1(954)274-4435**

TABLE OF CONTENTS

TABLE OF CONTENTS	2
SPECIFICATIONS	4
Overview	4
Basic Information	4
Dimensions	4
Speed, Capacities and Weight	4
Accommodations	4
Hull and Deck Information	5
Engine Information	5
DETAILED INFORMATION	6
Salon	6
Galley	6
Dining	6
Master Stateroom	6
Master Head	7
VIP Stateroom	7
Guest Stateroom 1	7
Guest Stateroom 2	7
Guest Head	7
Companionway	8
Helm Deck	8
Electrical Equipment	8
Upper Deck	8
Aft Deck	8
Engineer Room	9
Exclusions	9
Exclusions	9
Disclaimer	9

PHOTOS	10
CONTACTS	23
Contact details	23
Telephones	23
Office hours	23
Address	23

SPECIFICATIONS

Overview

Sumerset Houseboat 90'x18' powered by Twin Mercruiser stern drives. Bow and Stern Thrusters for safety-maneuverability of the vessel i.e. Captains & novice boat handlers alike. She is a full length companion way vessel located starboard side with front and rear entry. This 90' Sumerset Houseboat highlights an extremely spacious salon and galley featuring a four stateroom accommodation. In review, the Master Stateroom is King Bedding/the Guest VIP Staterooms is Queen Bedding/and the Guest Stateroom offers Twin beds. By the way, a Chefs Galley features all Kenmore appliances. The upper deck offers full length of vessel accommodations, water slide, hot tub, fiberglass hardtop, and a walk-thru Helm Station. Family Memories start here and you deserve a lifestyle change on the water.

Basic Information

Category: Houseboat

Model Year: 2005

Year Built: 2005

Country: United States

Vessel Top: Hardtop

Dimensions

LOA: 90' 0" (27.43m)

Beam: 18' 0" (5.49m)

Max Draft: 3' 7" (1.09m)

Speed, Capacities and Weight

Cruise Speed: 6 Kts. (7 MPH)

Max Speed: 8 Kts. (9 MPH)

Water Capacity: 240 Gallons

Fuel Capacity: 270 Gallons

Accommodations

Total Cabins: 4

Total Heads: 3

Hull and Deck Information

Hull Material: Aluminum

Engine Information

Engines: 2

Manufacturer: Mercruiser

Model: 5.0 M.P.I.

Engine Type: I/O

Fuel Type: Diesel

DETAILED INFORMATION

Salon

- Recessed lighting
- C-Shaped couch with seating for at least 12 people
- Entertainment system with 42' Sanyo TV
- Clarion stereo control
- Ottoman
- Ceiling fan
- Computer desk to starboard
- Helm to starboard
- Carpeting, blinds with custom valances
- Hallway has four 6' windows, blinds and custom valances
- Entrance to aft deck

Galley

- Kenmore dishwasher
- Refrigerator/freezer
- Kenmore 4 burner stove and oven
- Kenmore microwave oven
- (2) Stainless steel sinks with sprayer
- Ample storage with upper and lower cabinet

Dining

- Seating for 8 around a Corian table top
- Tile flooring
- Bar area with mirror back-splash, wine storage, and cabinet storage above and below

Master Stateroom

- King bed with storage underneath
- Side step-ups
- His and her nightstand with lamps
- Hanging closet with folding doors
- Chest of drawers to port
- Large rear window
- Window with large upholstered window seat facing aft with storage underneath

- Built-in Sanyo TV
- Carpeting
- Blinds with custom valances
- Ceiling fan

Master Head

- His and her sinks
- Vanity in center with chair
- Large shower with tile
- Techa toilet
- Large towel storage cabinet above toilet

VIP Stateroom

- Lower level queen bed with built-in night tables
- Storage and drawers
- Magnavox HDTV
- DVD player
- Large mirror

Guest Stateroom 1

- Queen bed raised with side steps, built-in night tables
- Under counter storage to port
- Hanging closet
- Magnavox HDTV
- DVD player

Guest Stateroom 2

- Lower level twin beds
- Mirror
- Hanging closet
- Night stand
- Magnavox HDTV monitor
- Magnavox DVD/CD player

Guest Head

- Step-in tub/shower
- Vanity with single sink
- Techa toilet

Companionway

- Kenmore washer & dryer, super capacity located in companionway

Helm Deck

- (2) VHF radios
- Lowrance global map 7600 GPS
- Hydraulic bow and stern thrusters
- Lowrance digital depth finder

Electrical Equipment

- Xantrex inverter charger
- (2) shore cords
- 20kw Westerbeke generator
- Carrier heat pump

Upper Deck

- Very large upper bow wrap-around couch with filler cushions for sun bathing
- Aft of helm is a glass top table with seating for 6 in wicker chairs
- (2) Large service bars, one facing fore and one facing aft with built-in under counter
- Magic chef refrigerator
- (2) Ceiling fans
- (4) Speakers on upper deck
- (5) 110 volt outlets
- Sink
- Abundance of storage
- (6) Wicker bar stools Extra large sun lounges on aft sun deck
- Hot tub on aft sun deck
- Fore and aft stairways to upper and lower deck
- Stern mounted Water Slide

Aft Deck

- (2) Lockable storage lockers on aft covered deck
- Bench with storage underneath
- Half bath with outside entrance

Engineer Room

- Bilge pumps
- Holding tank
- GrocoSea strainers
- Bilge blowers
- Water heater
- Fireboy system

Exclusions

- Owner's personal items and gear

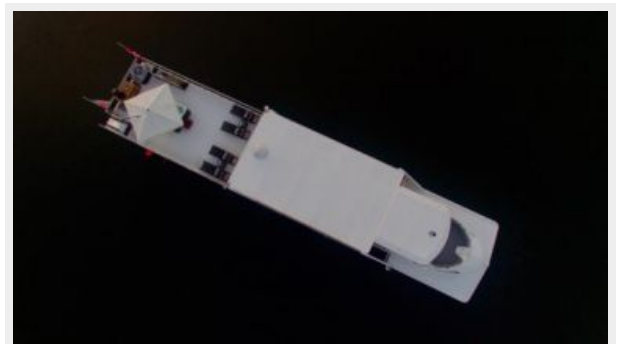
Exclusions

Owner's personal belongings.

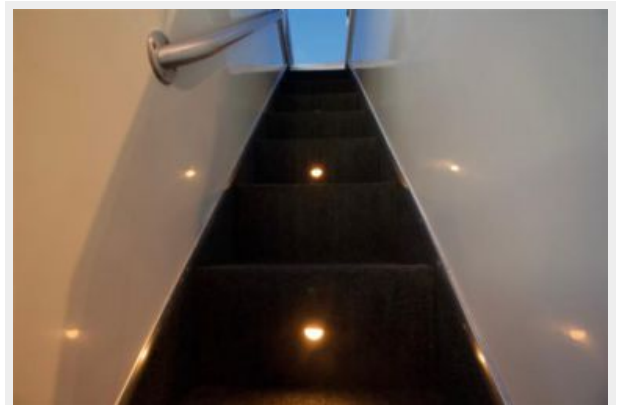
Disclaimer

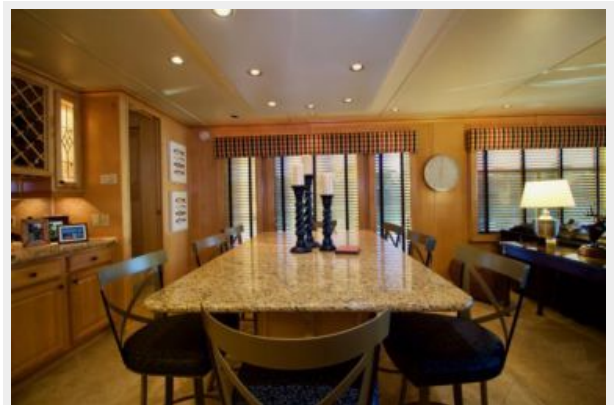
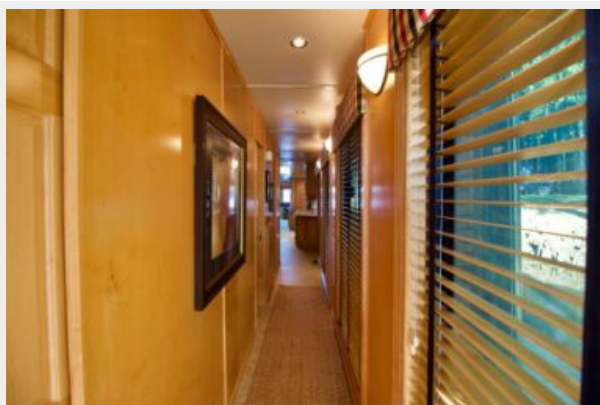
The Company offers the details of this vessel or yacht in good faith but cannot guarantee or warrant the accuracy of this information nor warrant the condition of the vessel. A buyer should instruct his representatives, agents, or his surveyors, to investigate such details as the buyer desires validated. This vessel or yacht is offered subject to prior sale, price change, or withdrawal without notice.

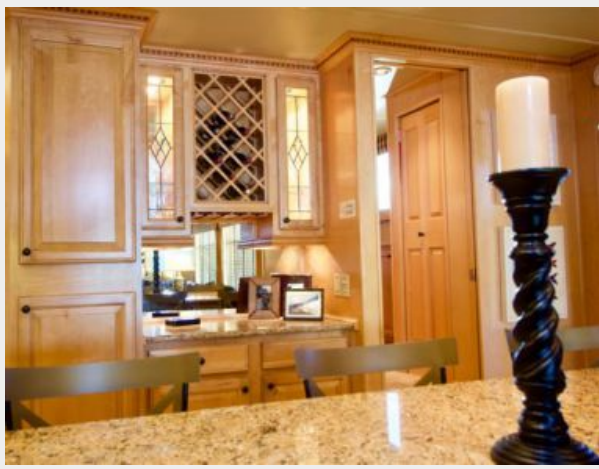
PHOTOS

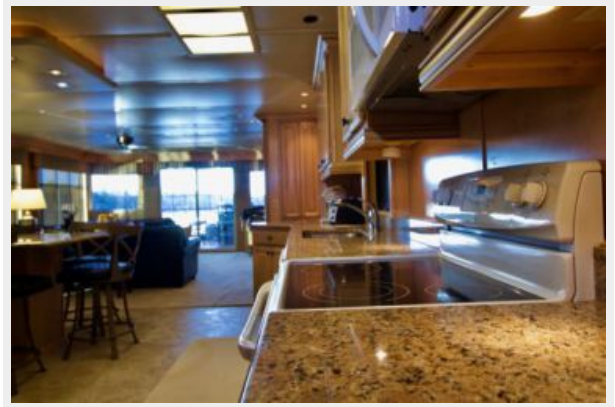


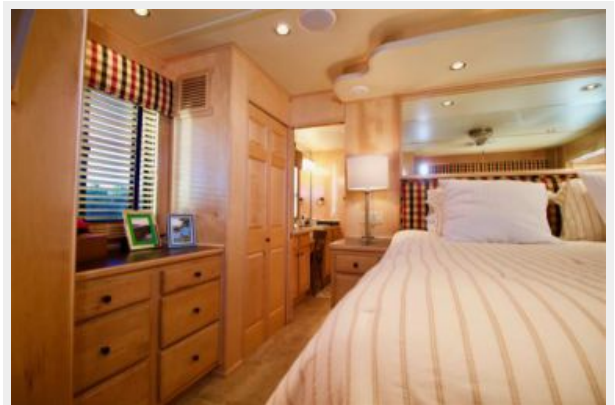
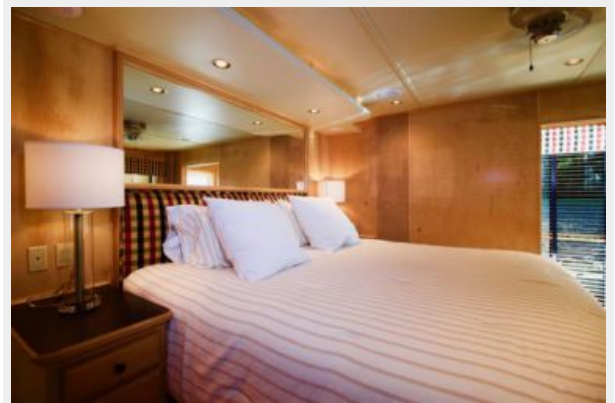






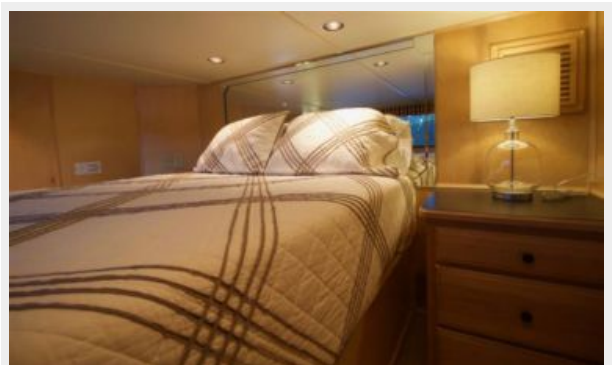
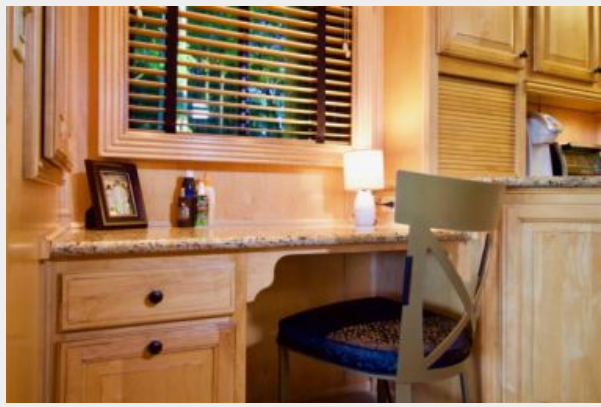




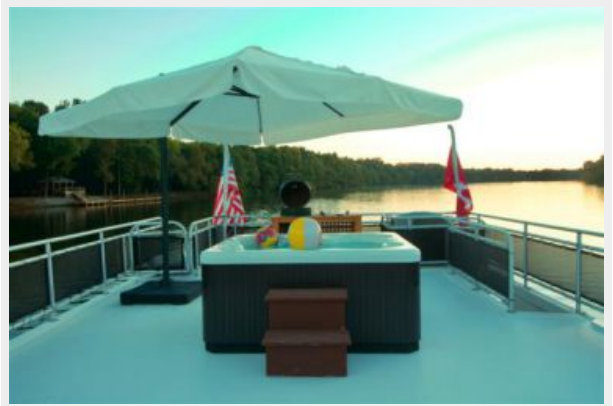
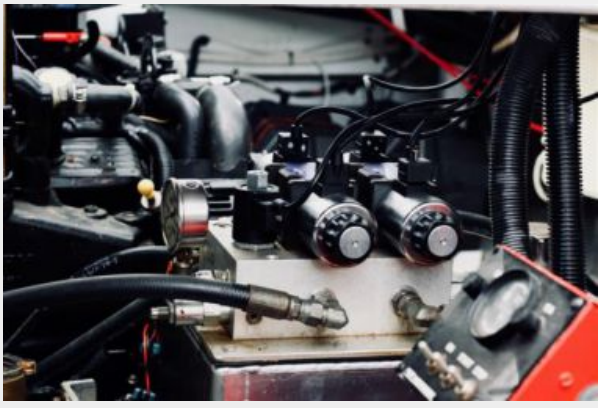














CONTACTS

Andrey Shestakov, leading yacht broker of the sales department of Shestakov Yacht Sales Inc. Shestakov Yacht Sales Inc., the official representative of the Miami/Fort Lauderdale FL headquarters.

Contact details

Email: andrey@shestakovyachtsales.com

Web: shestakovyachtsales.com/en/

Telephones

USA: +1(954)274-4435

Office hours

Monday – Saturday: **9:00 - 21:00** EDT

Sunday: **closed**

Address



Harbour Towne Marina, 850 NE 3rd St,
STE 213, Dania, FL 33004