

# ELENA QUEEN OF ARTS — CUSTOM BUILT



**Builder:** CUSTOM BUILT

**Year Built:** 1982

**Model:** Boats

**Price:** PRICE ON APPLICATION

**Location:** United States

**LOA:** 79' (24.08mm)

**Beam:** 26

**Max Draft:** 4' 9" (1.45mm)

**Cruise Speed:** 6 Knots Kts. (7 MPH)

Our experienced yacht broker, Andrey Shestakov, will help you choose and buy a yacht that best suits your needs **Elena Queen of Arts — CUSTOM BUILT** from our catalogue. Presently, at Shestakov Yacht Sales Inc., we have a wide variety of yachts available on our sale's list. We also work in close contact with all the big yacht manufacturers from all over the world.

If you would like to buy a yacht **Elena Queen of Arts — CUSTOM BUILT** or would like help answering any questions concerning purchasing, selling or chartering a yacht, please call **+1(954)274-4435**

---

# TABLE OF CONTENTS

---

TABLE OF CONTENTS	2
SPECIFICATIONS	3
Overview	3
Basic Information	3
Dimensions	3
Speed, Capacities and Weight	3
Accommodations	4
Hull and Deck Information	4
PHOTOS	5
CONTACTS	12
Contact details	12
Telephones	12
Office hours	12
Address	12

---

# SPECIFICATIONS

---

## Overview

---

Unique opportunity to own a one-of-a-kind privately owned, self-propelled stern-wheeler, river boat replica house barge. Timeless appealing classic meets function and luxury. "Elena Queen of Arts" boasts an open & airy layout throughout. Well-appointed with 3 staterooms, 2.5 heads & captains berth, large galley, salon, dinette, library, laundry room, bow seating areas, large upper deck with hot tub, custom woodwork throughout and so much more. Some features include, Young Chang grand piano, projector screen, custom carpentry, cast iron propane fireplaces, coffered ceilings, granite countertops, radiant heat, large sliding windows, 4 entryways, recessed lighting, and many other custom features. Her drivetrain is powered by a pair of 250hp Detroit Diesel 6-71 Naturals with PTO driven counter-rotating stern wheels, dual Detroit Diesel 4-71 40kW 3 phase generators, diesel fed boiler, hydraulic dual action cylinders operating a quad rudder system and pneumatic throttle controls. "Elena Queen of Arts" was commissioned for the late owner of Aflac Insurance John Amos and built by AC McLeod with design cues to replicate the famous Delta Queen. She would make for an excellent waterfront home, floating hotel, B&B or crew vessel. She must be seen to appreciate, call today to schedule your showing. THIS VESSEL MUST BE SEEN TO BE FULLY APPRECIATED.

## Basic Information

---

**Category:** Boats

**Sub Category:** Houseboat

**Model Year:** 1982

**Year Built:** 1982

**Country:** United States

## Dimensions

---

**LOA:** 79' (24.08mm)

**Beam:** 26

**Max Draft:** 4' 9" (1.45mm)

## Speed, Capacities and Weight

---

**Cruise Speed:** 6 Knots Kts. (7 MPH)

**Water Capacity:** 6000 Gallons

**Holding Tank:** 1000 Gal Gallons

**Fuel Capacity:** 1000 Gal Gallons

---

## Accommodations

---

**Total Cabins:** 3

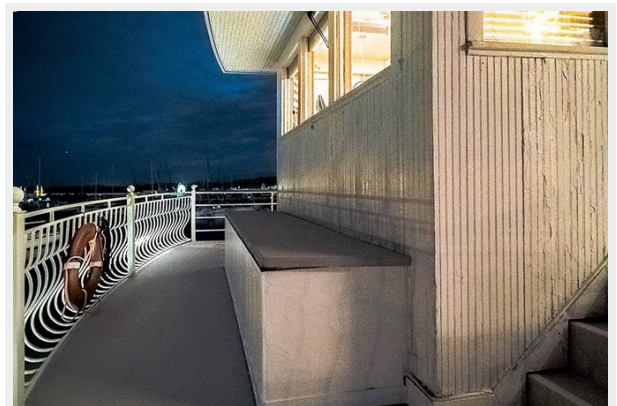
---

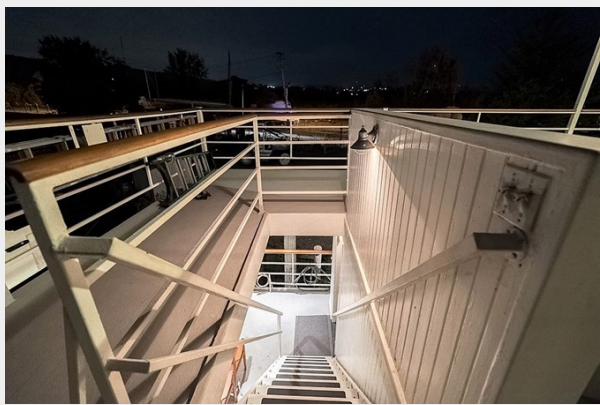
## Hull and Deck Information

---

**Hull Material:** Steel

# PHOTOS



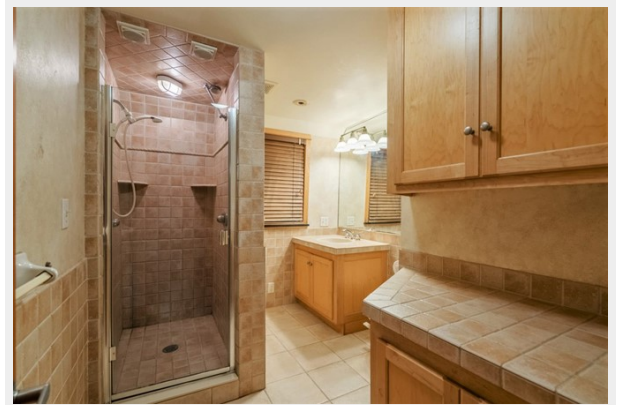


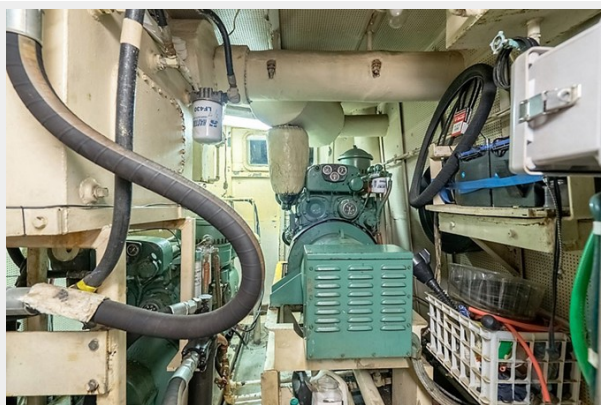












# CONTACTS

---

Andrey Shestakov, leading yacht broker of the sales department of Shestakov Yacht Sales Inc. Shestakov Yacht Sales Inc., the official representative of the Miami/Fort Lauderdale FL headquarters.

## Contact details

---

Email: [andrey@shestakovyachtsales.com](mailto:andrey@shestakovyachtsales.com)

Web: [shestakovyachtsales.com/en/](http://shestakovyachtsales.com/en/)

## Telephones

---

USA: +1(954)274-4435

## Office hours

---

Monday – Saturday: **9:00 - 21:00** EDT

Sunday: **closed**

## Address

---



Harbour Towne Marina, 850 NE 3rd St,  
STE 213, Dania, FL 33004