

## STARS & STRIPES — HANSE



**Builder:** HANSE

**Year Built:** 2013

**Model:** Cruising/Racing Sailboat

**Price:** PRICE ON APPLICATION

**Location:** United States

**LOA:** 34' 1" (10.39m)

**Beam:** 11' 6" (3.51m)

**Max Draft:** 5' 1" (1.55m)

Our experienced yacht broker, Andrey Shestakov, will help you choose and buy a yacht that best suits your needs **Stars & Stripes — HANSE** from our catalogue. Presently, at Shestakov Yacht Sales Inc., we have a wide variety of yachts available on our sale's list. We also work in close contact with all the big yacht manufacturers from all over the world.

If you would like to buy a yacht **Stars & Stripes — HANSE** or would like help answering any questions concerning purchasing, selling or chartering a yacht, please call **+1(954)274-4435**

---

# TABLE OF CONTENTS

---

TABLE OF CONTENTS	2
SPECIFICATIONS	3
Overview	3
Basic Information	3
Dimensions	3
Speed, Capacities and Weight	3
Accommodations	4
Hull and Deck Information	4
Engine Information	4
DETAILED INFORMATION	5
Accommodations	5
Electrical Equipment	5
Electronics	6
Deck Equipment	6
Hull	7
Sails and Rigging	7
Exclusions	8
Disclaimer	8
PHOTOS	9
CONTACTS	16
Contact details	16
Telephones	16
Office hours	16
Address	16

---

# SPECIFICATIONS

---

## Overview

---

The Hanse 345 is an innovative design that offers excellent sailing performance and spacious accommodations. The large cockpit & swim platform combined with a roomy well appointed interior make the 345 an excellent family cruiser/racer. By maximizing the usefulness of the full length and beam the 345 feels like a much larger boat, but with small boat handling, and lower operating costs.

Stars & Stripes is an excellent example of this model. She has had light seasonal use by an experienced yachtsman, and has always been yard maintained to a high standard. This is a terrific opportunity to purchase a near-new boat at a used boat price.

## Basic Information

---

**Category:** Cruising/Racing Sailboat

**Sub Category:** Sloop

**Model Year:** 2013

**Year Built:** 2013

**Country:** United States

## Dimensions

---

**LOA:** 34' 1" (10.39m)

**LWL:** 31' 4" (9.55m)

**Beam:** 11' 6" (3.51m)

**Max Draft:** 5' 1" (1.55m)

**Clearance:** 51' 8" (15.75m)

## Speed, Capacities and Weight

---

**Displacement:** 13640 Pounds

**Water Capacity:** 60 Gallons

**Fuel Capacity:** 42 Gallons

---

## Accommodations

---

**Total Cabins:** 2

---

## Hull and Deck Information

---

**Hull Material:** Fiberglass

**Hull Color:** light grey

**Hull Designer:** Judel/Vrolijk

---

## Engine Information

---

**Engines:** 1

**Manufacturer:** Volvo

**Model:** D1-20

**Engine Type:** Inboard

**Fuel Type:** Diesel

---

# DETAILED INFORMATION

---

## Accommodations

---

The Hanse 345 offers remarkable accommodations for its size. The Herreshoff style interior - with white paneled bulkheads and varnished teak trim and lockers - provides a very bright and inviting interior. Five flush opening deck hatches and five port lights offer ample light and ventilation in all cabins.

**Starting Forward** Large V-berth forward with overhead shelving and hanging lockers just aft to port & starboard.

**Main Cabin** Settee seating to port with storage lockers outboard and above. The aft end of the settee provides seating for the Nav Station. The Nav Station includes a chart table and electronics panel.

To Starboard is a large L-shaped settee with outboard storage lockers. A large centerline drop-leaf dining table can accommodate up to 8 for meals. Two overhead hatches and 3 large opening ports provide excellent ventilation.

**Galley** The L-shaped galley is aft of the main cabin and to starboard of the companionway steps. Features include:

- 12V Isotherm refrigeration
- 2-bay Stainless steel sink
- H/C pressure water
- 2-burner LPG stove with oven
- Corian counters

**Aft Cabin** Large aft cabin to starboard with a large double berth. Overhead shelving and double hanging locker provide storage. Opening port for ventilation

**Head** Aft to port is a large head, featuring:

- manual jabsco toilet w. holding tank
- vanity with storage cabinet and large mirror
- spacious walk-in shower stall

---

## Electrical Equipment

---

- 110 volt shower power
- Shower power battery charger
- 110V outlets

- Shore power cord
- 12 volt power with panel
- 1 90amp engine start battery
- (2) 2016 Vectran AGM batteries
- Fusion stereo with speakers in cockpit and main saloon, and Fusion remote
- Bilge pump
- 12V Isotherm refrigeration
- Windlass

## Electronics

---

Simrad Instrument package:

- Simrad IS40 Navigation display at helm with wind/depth and boat speed functions
- Simrad NSS 12 inch touch screen GPS Chart plotter and radar
- Simrad below-decks Auto pilot
- Simrad VHF at nav station
- Silva compass at helm and another at forward cockpit bridgedeck

## Deck Equipment

---

Ground Tackle:

- Delta anchor on Stainless Steel bow roller
- All chain rode, approximately 150'
- Electric Windlass mounted in anchor locker

Teak decking

Stainless steel wire lifelines

5 flush deck hatches, and 5 opening ports

Line wells for leading lines back to cockpit

Stanchion mounted boarding step

Cockpit Features:

- Twin helms with easy walk-through to transom
- Fold down swim platform with swim ladder
- Centerline drop-leaf cockpit table
- padded seating in stern quarters
- cockpit cushions
- H/C cockpit shower
- rail-mounted Life-Sling
- cockpit speakers
- line-handling pouches

## Hull

---

The hull is laminated with vinyl ester resin for osmosis protection, the deck is a strong and lightweight sandwich construction with balsa core. Main bulkheads are laminated to hull and deck for added strength. Elegant hull-deck-joint eliminates toe rail fixings.

Shoal draft keel, bolted to the the solid bottom structure and strong high quality stainless steel bolts. Effective pre-balanced rudder with self-adjusting bearings.

Light grey topsides with white boot stripes

## Sails and Rigging

---

Double-spreader, deck-stepped, Seldon mast

Furlex 200S jib furler

Hanse integrated self-tacking jib system. All halyards, sheets, trimming and reefing lines are covered and run aft below the decks to the helmsman position. There is an extra genoa track for an optional larger genoa. Large lockers for sheets and lines stowage.

German mainsheet system

Rigid boom vang

Winches:

- (2) Lewmar Electric Primaries, accessible from helm stations
- (2) Lewmar 2-speed S/T secondaries, in cockpit
- No winches on mast

Sails:

- Elvstron Dacron battened mainsail
- Elvstrom Dacron working jib, self-tacking

- 130 Dacron Genoa added in 2015 for better light air performance

## Exclusions

---

Owner's personal belongings.

## Disclaimer

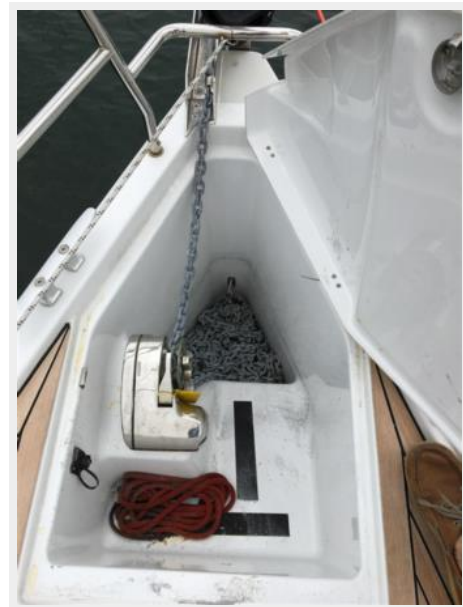
---

The Company offers the details of this vessel or yacht in good faith but cannot guarantee or warrant the accuracy of this information nor warrant the condition of the vessel. A buyer should instruct his representatives, agents, or his surveyors, to investigate such details as the buyer desires validated. This vessel or yacht is offered subject to prior sale, price change, or withdrawal without notice.



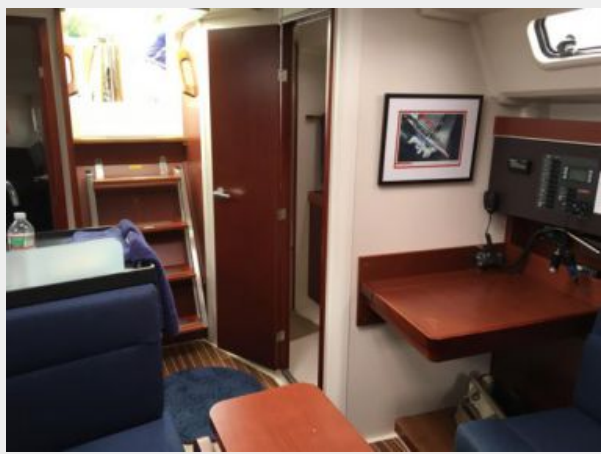
# PHOTOS

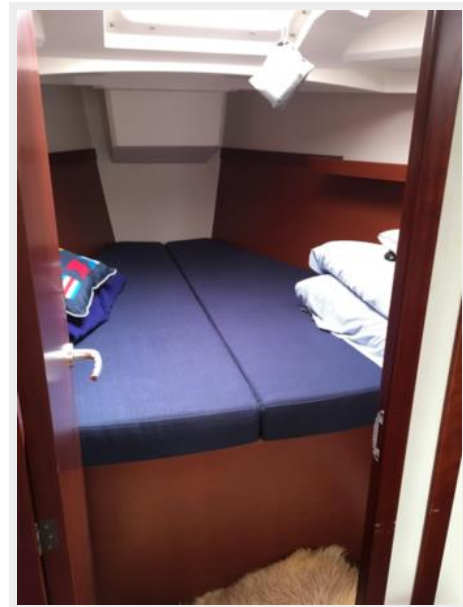














# CONTACTS

---

Andrey Shestakov, leading yacht broker of the sales department of Shestakov Yacht Sales Inc. Shestakov Yacht Sales Inc., the official representative of the Miami/Fort Lauderdale FL headquarters.

## Contact details

---

Email: [andrey@shestakovyachtsales.com](mailto:andrey@shestakovyachtsales.com)

Web: [shestakovyachtsales.com/en/](http://shestakovyachtsales.com/en/)

## Telephones

---

USA: +1(954)274-4435

## Office hours

---

Monday – Saturday: **9:00 - 21:00** EDT

Sunday: **closed**

## Address

---



Harbour Towne Marina, 850 NE 3rd St,  
STE 213, Dania, FL 33004