

LUPO II — PERSHING



Builder: PERSHING

Year Built: 2000

Model: Motor Yacht

Price: PRICE ON APPLICATION

Location: United States

LOA: 65' 0" (19.81m)

Beam: 15' 11" (4.85m)

Max Draft: 4' 5" (1.35m)

Cruise Speed: 20 Kts. (23 MPH)

Max Speed: 46 Kts. (53 MPH)

Our experienced yacht broker, Andrey Shestakov, will help you choose and buy a yacht that best suits your needs **Lupo II — PERSHING** from our catalogue. Presently, at Shestakov Yacht Sales Inc., we have a wide variety of yachts available on our sale's list. We also work in close contact with all the big yacht manufacturers from all over the world.

If you would like to buy a yacht **Lupo II — PERSHING** or would like help answering any questions concerning purchasing, selling or chartering a yacht, please call **+1(954)274-4435**

TABLE OF CONTENTS

TABLE OF CONTENTS	2
SPECIFICATIONS	3
Overview	3
Basic Information	4
Dimensions	4
Speed, Capacities and Weight	4
Accommodations	4
Hull and Deck Information	5
Engine Information	5
DETAILED INFORMATION	6
Vessel Information	6
Exclusions	16
Disclaimer	16
PHOTOS	17
CONTACTS	32
Contact details	32
Telephones	32
Office hours	32
Address	32

SPECIFICATIONS

Overview

To schedule a private FaceTime or video tour, contact me and make arrangements

This is an exceptionally well cared for, **recently serviced (7/2019 call for haul out photos)**; Arneson driven, **CAT powered Pershing 65. YES CAT MOTORS...** Her expected sleek Italian styling and premium handling coupled with the reliable and affordability of the Caterpillar power give you a Ferrari on the water capable of topping out at an impressive 45 kts that doesn't drain the bank account to service. She carries lower hours and is in IMPECCABLE condition. Showings by appointment only.

Options and Notable Features

- The only Arneson driven Caterpillar powered Pershing for sale in the USA with full 1000 hrs service completed
- Capable of 40kts
- New Sunroof Canvas (8/2019)
- Buffed and waxed (8/2019)
- New Tint (8/2019)
- ArnesonDrive service: (7/2019)
- New bottom job (7/2019)
- New bow thruster high performance props (7/2019)
- Engine and Generator Oil Change (5/2020)
- Transmission Oil Change (5/2020)
- New Galley Fridge Installed (5/2020)
- Full 1000 hr service (4/2017)
- Vessel is in EXCELLENT condition
- Immaculate condition and perfect record keeping
- (2) New Furuno TZtouch 12" displays (2017)
- All new exterior JL Audio sound system speakers and Fusion head units (2017)

- New Furuno NXT radar (2017)
- New VHF (2017)
- NMEA2k allowing digital engine ECM readouts to Furuno displays
- New raw water pumps
- New battery charger
- Engine room painted (2017)
- Avon 320 jet rib tender included

Basic Information

Category: Motor Yacht

Model Year: 2000

Year Built: 2000

Country: United States

Dimensions

LOA: 65' 0" (19.81m)

LWL: 64' 8" (19.71m)

Beam: 15' 11" (4.85m)

Max Draft: 4' 5" (1.35m)

Speed, Capacities and Weight

Cruise Speed: 20 Kts. (23 MPH)

Max Speed: 46 Kts. (53 MPH)

Displacement: 63877 Pounds

Water Capacity: 250 Gallons

Fuel Capacity: 868 Gallons

Accommodations

Total Cabins: 3

Hull and Deck Information

Hull Material: Fiberglass

Engine Information

Engines: 2

Manufacturer: Caterpillar

Model: 3412

Engine Type: Inboard

Fuel Type: Diesel

DETAILED INFORMATION

Vessel Information

Options and Notable Features

- The only Arneson driven Caterpillar powered Pershing for sale in the USA with full 1000 hrs service completed
- Capable of 40kts
- New Sunroof Canvas (8/2019)
- Buffed and waxed (8/2019)
- New Tint (8/2019)
- ArnesonDrive service: (7/2019)
- New bottom job (7/2019)
- New bow thruster high performance props (7/2019)
- Engine and Generator Oil Change (5/2020)
- Transmission Oil Change (5/2020)
- New Galley Fridge Installed (5/2020)
- Full 1000 hr service (4/2017)
- Vessel is in EXCELLENT condition
- Immaculate condition and perfect record keeping
- (2) New Furuno TZtouch 12" displays (2017)
- All new exterior JL Audio sound system speakers and Fusion head units (2017)
- New Furuno NXT radar (2017)
- New VHF (2017)
- NMEA2k allowing digital engine ECM readouts to Furuno displays
- New raw water pumps
- New battery charger

- Engine room painted (2017)
- Avon 320 jet rib tender included

Helm Area and Electronics

- (2) New Furuno TZtouch 12" displays (2017)
- New Simrad Autopilot (2017)
- All new exterior JL Audio sound system speakers and Fusion head units
- Engine alarms (CAT panels)
- TV antenna
- High speed compass
- Remote fuel shut off
- Remote air vent shut off E.R.
- Engine fire extinguisher remote control
- Electronic "trolling valve" control
- Electronic engine Acc./Rev. lever control with synchronism
- External fiberglass dashboard with hydraulic opening instrument compartment
- External fiberglass dashboard on co-pilot side with compartment
- Bow thruster controls
- CAT engine displays
- Pershing steering wheel
- Controls for trim tabs and Arneson Drives
- (2) Flap indicators
- (2) Trim indicators
- Rudder angle
- Controls for lighting, bilge pumps, windlass
- Quicksilver engine throttles

- Double helm seat
- Canvas sunroof overhead

Cockpit

- Fore and aft sunbathing cushions
- U-shaped seating to port
- Teak flooring
- Fiberglass extendable table with pedestal
- Outdoor kitchen and wet-bar to starboard
- Fiberglass refrigerator outside cockpit, 32 gals.
- Fiberglass sink with fresh water faucet
- External sofa in helm area w/ smooth Ivory vinyl seat cushions and backrest
- 2-Burner stove in cockpit
- Ice maker
- Fridge • (12) Side and central hard top chrome ceiling lights
- (2) Stern swim platform lights
- Trash bin
- Sliding stern door, glass and stainless steel
- Sliding fiberglass door with lock
- Engine compartment inspection shutter

Lower Salon

- C-shaped leather sofa to port and galley to starboard
- Leather wrapped ottomans with storage
- (12) Ceiling lights with metal housings
- Cherry inlay ceiling accents

- (4) Stainless steel portholes
- Digitally-controlled A/C system
- Vinyl fabric wall coverings
- Polished cherry wood work and cabinetry
- Natural teak steps from top deck
- Cross-paneled ceiling covered with Magilite style fabric
- Accent lights
- Carpeted flooring
- Glass hi/lo coffee table

Galley

- Concealed under cherry countertops to starboard
- Refrigerator
- Wood floors
- Freezer
- Polished cherry cabinetry
- Exhaust fan
- Drawers with cutouts for cutlery
- Microwave oven • Stainless steel sink basin with folding tap
- Galley unit in polished Cherry
- Rubbish bin
- (2) Burner electric ceramic cooktop

Master Stateroom

- King size centerline berth
- Digitally-controlled A/C system

- Vinyl fabric wall coverings
- Polished cherry wood work and cabinetry
- Ceiling lights with metal housings
- Cherry inlay ceiling accents
- Carpeting
- Hanging locker with clothes rod, internal light, drawers & shelves
- Nightstands with polished Cherry
- Sharp flatscreen TV
- Digitally-controlled A/C system • (2) Reading lamps
- Chest of drawers in polished Cherry
- (3) Stainless steel portholes • Mirrored headboard • Fridge

Master Head

- Towel rack
- Shower with Plexiglass door and stainless steel hardware
- Teak shower grating
- Ivory fiberglass shower column
- (4) Lights
- Shower faucet
- Basin faucet
- Washbasin of Ivory fiberglass with lacquered cabinet door
- Stainless steel porthole
- Ivory fiberglass flooring
- Hanging locker with polished Cherry doors
- Towel rack
- Mirror

- Sink top of natural Travertine marble
- Electric freshwater toilet

VIP Stateroom

- Polished Cherry cabinetry
- Center-lined double berth
- Closet with clothes rod & internal light
- Berth border covered with vinyl fabric
- Nightstands with polished Cherry surface
- Mirrored headboard
- Digitally-controlled A/C system • Double bed mattress
- (2) Reading lights
- (2) Stainless steel portholes
- Sliding cover for hatchway
- Digitally-controlled A/C system
- Vinyl fabric wall coverings
- Polished cherry wood work and cabinetry
- Ceiling lights with metal housings
- Carpeting

Guest Stateroom

- Polished Cherry locker door with inside mirror • Nightstand with polished Cherry surface and border
- Digitally-controlled A/C system
- Vinyl fabric wall coverings
- Polished cherry wood work and cabinetry
- Ceiling lights with metal housings

- Carpeting
- (2) Single berths
- (2) Reading lamps
- (2) Mattresses
- (2) Stainless steel portholes
- Cross-paneled ceiling covered with vinyl
- Sharp flatscreen TV
- Vinyl upholstered headboard
- Hanging locker in bulkhead with polished Cherry doors

VIP/Guest Head

- Towel rack
- Shower with Plexiglass door and stainless steel hardware
- Teak shower grating
- Ivory fiberglass shower column
- (4) Lights
- Shower faucet
- Washbasin faucet
- Washbasin of Ivory fiberglass with lacquered cabinet door
- Stainless steel porthole
- Ivory fiberglass flooring
- Hanging locker with polished Cherry doors
- Towel rack
- Mirror
- Sink top of natural Travertine marble
- Electric freshwater toilet

Crew Quarters

- Crew cabin with head forward through exterior hatch on bow
- Single bed
- Sink
- Toilet
- Head

Hull & Deck Equipment

- Anchor Bruce 66 lbs. with lock
- Stainless steel railing
- Stainless steel anchor hawser
- (4) Stainless steel mooring cleats
- Rub-rail with stainless steel insert rubbing strake
- Galvanized anchor chain
- Spotlight
- Huge locker under stern sun pad
- Hydraulic davit
- Sliding canvas top
- Navigation lights
- Telescopic extensible hideaway hydraulic gangway with remote control
- Teak swim platform and steps • Hydraulic retractable swim ladder
- Fiberglass superstructure with layered glass windscreen
- Stainless steel black water extraction cap
- Stainless steel fresh water filling cap
- (2) Stainless steel fuel filling caps

- (2) Stainless steel aft platform grab rods
- Tender Garage
- 2000W dual command windlass
- (2) Hideaway side mooring cleats
- Stainless railing on the aft spoiler

Engine Room

- (2) 24V Multi-function hydraulic control stations
- A/C compressor
- Automatic powder fire suppression system
- (4) Seawater basket filters
- (2) Fuel separator filters
- 19 kW Kohler 60Hz power generator with soundproof housing
- Thermal insulation/soundproofing
- Fuel level check
- Plank ribbing in fiberglass
- Waterproof bulkhead
- (4) Ceiling light fixtures
- Manual pump fuel drainage/loading
- Dynamic air intakes on the bulkheads with remote control closure
- Light alloy and teak step ladder
- Stainless steel engine exhaust raiser
- Structural fuel tank, fiberglass and light alloy
- Fiberglass engine exhaust mufflers
- Bilge pump engine suction by-pass valves
- Generator manifold and exhaust fume separator

- Dewalt compressor
- Glendinning shore power bucket
- 8 gals. water heater (230V)
- Electric bilge pump with manifold
- (2) Electric bilge pumps
- Structural fresh water tank, fiberglass and light alloy
- Fiberglass gray water tank (34 gals.)
- Stainless steel black water tank (68 gals.)
- Hydraulic flap system
- Bronze water inlets and outlets
- ZF transmissions

Electrical System

- (2) Engine starting batteries, 260A 24V (New 2017)
- Generator starting battery, 100 A 12V (New 2017)
- (2) Bow thrusters 160A 24V (New 2017)
- (2) Engine service batteries, 260A 24V (New 2017)
- Electric engine room extractors
- Mass insulation with copper plait
- Parallel on batteries
- Battery charger partition
- 110V GFI Sockets (1 per room)
- Engine connection panel
- Accessory control panel with cut-out switches
- Power supply panel in engine room
- Galvanic protection with zinc

- Battery cut-off
- Voltage measuring instruments, 24V/230V
- Battery charger, Mastervolt, 24V 15A
- Battery charger, Mastervolt, 24V 75A
- Battery charger, Mastervolt, 12V 10A

Exclusions

Owner's personal belongings.

Disclaimer

The Company offers the details of this vessel or yacht in good faith but cannot guarantee or warrant the accuracy of this information nor warrant the condition of the vessel. A buyer should instruct his representatives, agents, or his surveyors, to investigate such details as the buyer desires validated. This vessel or yacht is offered subject to prior sale, price change, or withdrawal without notice.

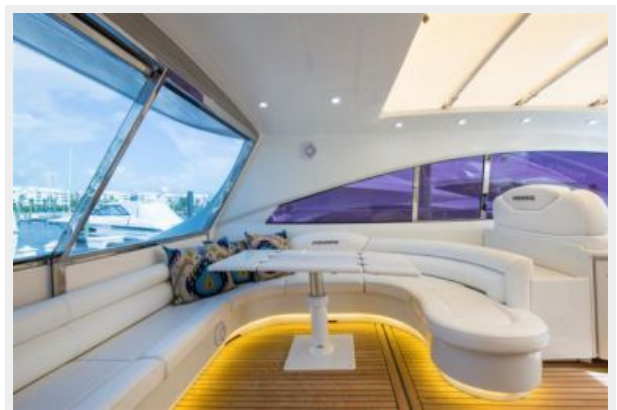
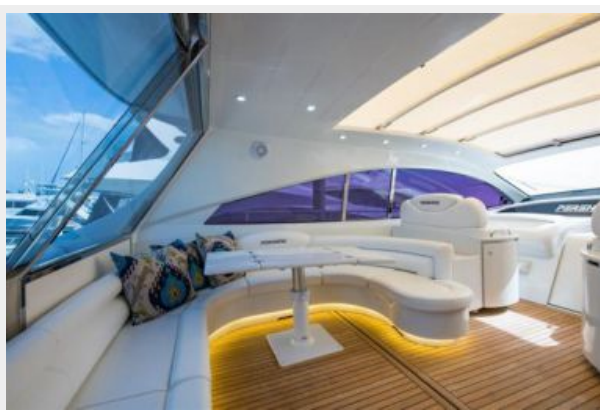
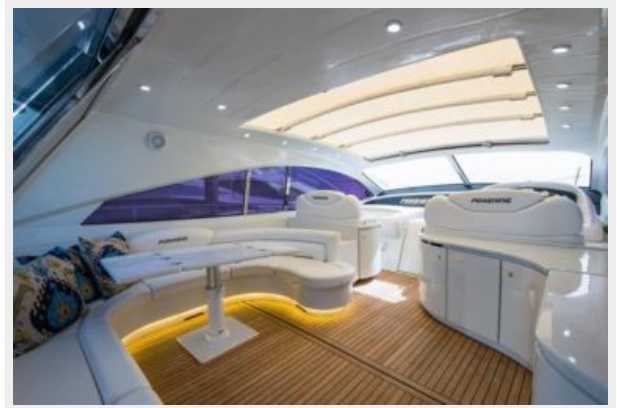
PHOTOS

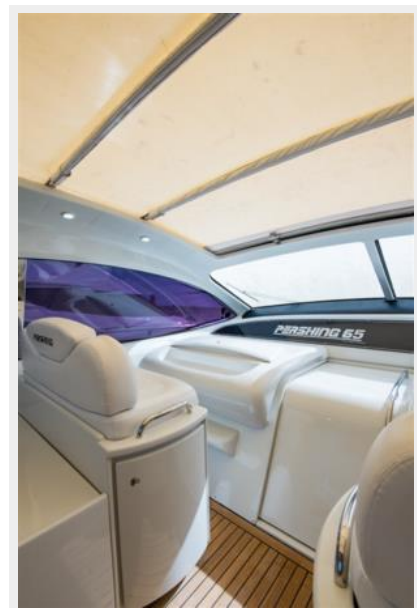
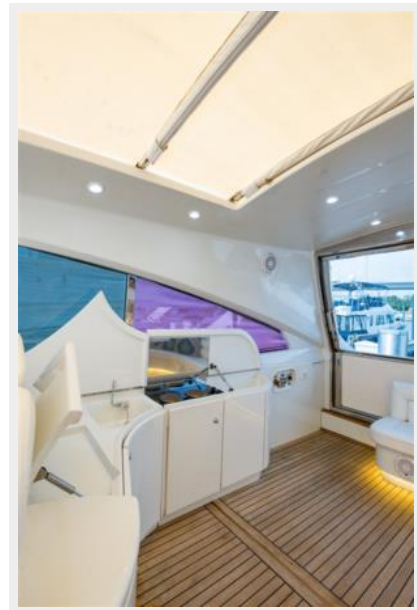
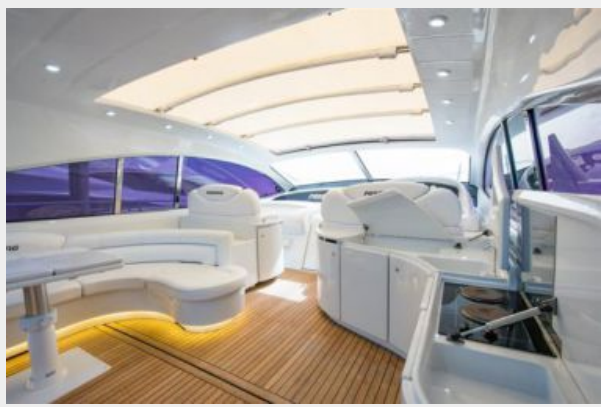








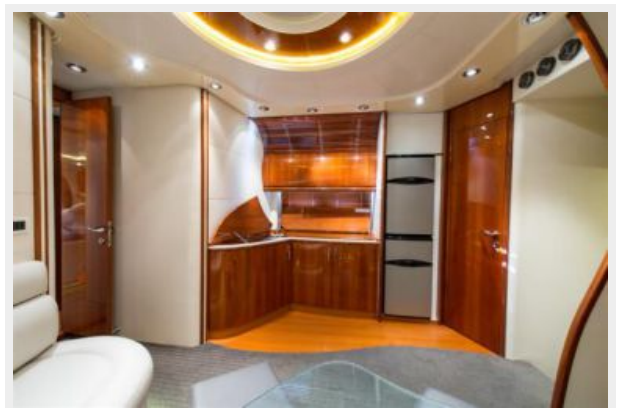
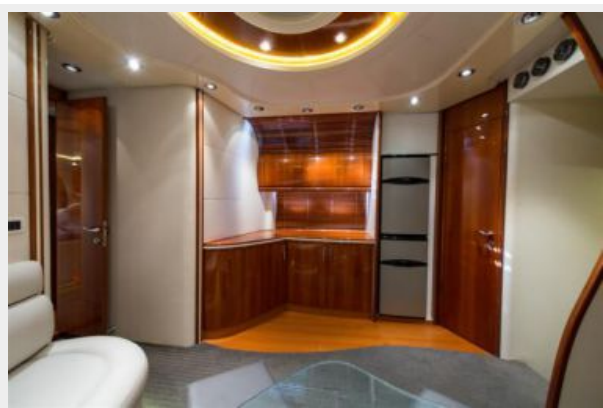


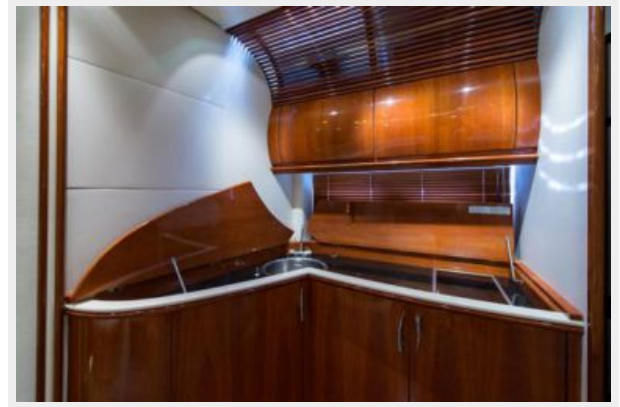








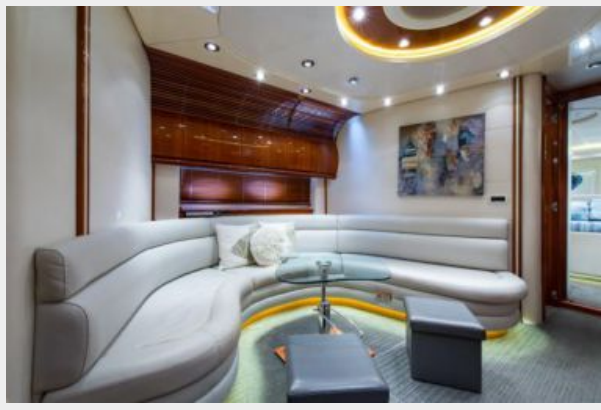












CONTACTS

Andrey Shestakov, leading yacht broker of the sales department of Shestakov Yacht Sales Inc. Shestakov Yacht Sales Inc., the official representative of the Miami/Fort Lauderdale FL headquarters.

Contact details

Email: andrey@shestakovyachtsales.com

Web: shestakovyachtsales.com/en/

Telephones

USA: +1(954)274-4435

Office hours

Monday – Saturday: **9:00 - 21:00** EDT

Sunday: **closed**

Address



Harbour Towne Marina, 850 NE 3rd St,
STE 213, Dania, FL 33004