

## WANDERLURE II — ALDEN YACHTS



**Судостроитель:** [ALDEN YACHTS](#)

**Год постройки:** 1926

**Модель:** Шхуна

**Цена:** **ЦЕНА ЯХТЫ ПО ЗАПРОСУ**

**Местонахождение:** United States

**Длина общая:** 37' 0" (11.28m)

**Ширина:** 10' 6" (3.20m)

**Мин. осадка:** 5' 10" (1.78m)

**Крейс. скорость:** 7 Kts. (8 MPH)

Купить Wanderlure II — ALDEN YACHTS а также выбрать подходящую вам яхту из нашего каталога яхт вам поможет опытный яхтенный брокер Андрей Шестаков. На сегодняшний день компания Shestakov Yacht Sales Inc. имеет большое количество яхт в собственном списке продаж, а также тесно сотрудничает со всеми крупными яхтенными производителями по всему миру.

Для того чтобы купить яхту Wanderlure II — ALDEN YACHTS а также проконсультироваться по любому вопросу связанному с покупкой, продажей, чартером яхт позвоните по телефону **+7(918)465-66-44**.

# ОГЛАВЛЕНИЕ

ОГЛАВЛЕНИЕ	2
ХАРАКТЕРИСТИКИ	4
Обзор	4
Основная информация	4
Размеры	4
Скорость, вместимость и масса	4
Размещение	4
Корпус и палуба	5
Информация о двигателе	5
ПОДРОБНОЕ ОПИСАНИЕ	6
History	6
Restoration	6
Construction	6
Deck	7
Accommodations	7
Rigging	7
Electrical	8
Sails and Canvas	8
Исключения	8
Отказ от ответственности	8
ФОТОГРАФИИ	10
Stern	10
Down Wind	10
Bow Pulpit	10
Fordeck	10
Port View	10
Starboard Forward	11
Starboard view	11

---

Galley Starboard	11
Galley Port	11
Galley Leaded Glass	11
Galley	11
Salon Table	12
Salon Aft	12
Salon Starboard Foward	12
Salon Starboard	12
Fold Up Table	13
Salon Port	13
V-Berth	13
On the Hard	13
On the Hard II	14
On the Hard III	14
Stern	14
Cockpit	14
Mast Head Fittings	14
<b>КОНТАКТЫ</b>	<b>15</b>
Контактная информация	15
Телефоны	15
Время работы	15
Адрес	15

# ХАРАКТЕРИСТИКИ

## Обзор

'Wanderlure II' is a spectacular example of a well-executed restoration of a John Alden design schooner. Her sail plan is that of a staysail schooner for ease of handling and the ability to fly many combinations of sails. The new decks are of one-half inch Silver Bali. The galley features a propane stove with oven, well insulated ice box, stainless steel counters and leaded glass paneled counter storage. Abundant light, ventilation, propane heat and sleeping up to four. With plentiful storage and larger water tanks, fresh bottom and topsides paint, this vessel is ready to go to sea.

## Основная информация

Тип судна: Шхуна

Подкатегория: Крейсерская яхта

Модельный год: 1926

Год постройки: 1926

Страна: United States

## Размеры

Длина общая: 37' 0" (11.28m)

Длина по ватерлинии: 28' 6" (8.69m)

Ширина: 10' 6" (3.20m)

Мин. осадка: 5' 10" (1.78m)

## Скорость, вместимость и масса

Крейс. скорость: 7 Kts. (8 MPH)

Водоизмещение: 22400 Pounds

Вместимость воды: 20 Gallons

Объем топливного бака: 40 Gallons

## Размещение

Всего ком. состава: 1

## Корпус и палуба

---

**Материал корпуса:** Wood

## Информация о двигателе

---

**Двигатели:** 1

**Производитель:** Perkins

**Модель:** 4-108

**Тип двигателя:** Inboard

**Тип топлива:** Diesel

---

# ПОДРОБНОЕ ОПИСАНИЕ

---

## History

---

'WANDERLURE II' was launched in 1926 at the premier Richardson Boat Yard in City Island New York and brought out to Newport Beach California in 1927 by H.H. Larkin. Having spent her life in Southern California until 1990 where she was brought to Puget Sound, where her current owners bought and took five years to completely restore her to better than new condition. A very capable vessel in any seaway she also had an impressive racing record in California from the 1920's thru the 1980's. Nine vessels were built to this John Alden design, including five schooners and four ketches.

## Restoration

---

Varnished teak bulwarks, cap rails and transom were installed about 1970. Between 2000 thru 2005 she was rebuilt, reframed, refastened, recaulked with new Silver Bali decks installed and the cockpit rebuilt with new combings. The rest of the vessel was brought up to like new condition.

The interior was replaced in a traditional manner appropriate to the era with Honduras mahogany, leaded glass, stainless counters in the galley. A propane stove and a Dickinson propane bulkhead heater were installed in 2008.

Originally built with a gaff fore, she was changed to a staysail, along with a six foot taller foremast and a lengthening of the bowsprit. This was thought to have happened in the 1950's. Bronze winches, Lofran DC chain/rode anchor windlass, varnished masts and a Perkins 4-108 diesel complete a spectacular vessel.

## Construction

---

- Planking; Honduras mahogany 1 1/8" caulked and payed
- Fastenings; bronze #12, 14 x 2 1/2" x 3" long above the water line
- Fastenings; galvanized #12, 14 x 3 1/4" below the water line
- Framing; original 2" x 2 1/2" steam bent white oak on 12" centers
- Renewed framing of white ash was epoxy saturated, bent to shape and fastened to the hull
- Main deck completely renewed over original 2" x 3" decking by addition of 1/4" plywood and 1/2" Silver Bali over plywood in epoxy, grooved and payed
- Floors; 2 1/2" oak
- Clamp; 1 5/8"
- Shelf; 1 5/8" x 3"
- Bilge clamp; 1 5/8" x 2 1/2"
- Deck and House beams; 1 3/8" x 2 1/4"

- Ballast keel; iron 10,000 lbs. 1 1/2" diameter keel bolts
- Back bone; 8" wide x depth as necessary
- Bulwarks; teak capped with teak

## Deck

---

Sail hoisting;

Main Two #10 Barient

Formast Three #10 Barient

Main Halyard Merrimar #2

Sheet Winches;

Two #22 Barient

Two #21 Barient

Anchoring;

DC power up Lofrans windlass

45 lb CQR

200' 5/16" Galvanized chain

25 lb Danforth (Two)

55' 5/16" Galvanized chain

200' 3/4" nylon rode

## Accommodations

---

From the companionway enter the main cabin with the galley port accommodating the stove and oven. The galley starboard features the sink and ice chest. Moving forward the mainmast holds the folding table and to port and starboard are generous seating areas that can be used as berths. On the port forward bulkhead is the Dickinson propane cabin heater and opposite to starboard on the forward bulkhead is a leaded glass storage cabinet. Moving forward entering the forward cabin, the head is to port with hanging storage to starboard. The large V-berth has enclosed storage with shelves above to either side. Forward at the bow is the chain locker.

## Rigging

---

- Rigging; Stainless Steel 7/16" and 1/2" 1x19 wire
- Mainstays; 1/2" Head-stays; and all wire 7x19
- All rigging swagged to loop mast then wrapped with sewn leather covers
- Turnbuckles; 1/2" Bronze
- Runners to rail cap; 3/8" wire
- Masts are solid; mainmast is close grain fir; foremast is sitka spruce. Both approximately 6" diameter
- Both masts and booms inspected, worked over and refinished. 7/8" Stainless steel track on masts

---

## Electrical

---

- All ships wiring renewed by professional electrician in 2004
- All running lights renewed to meet current codes
- All interior lighting renewed or reworked
- Master three way main battery switch
- Four 6 volt batteries
- Fused switches

---

## Sails and Canvas

---

- Sail covers and full boat cover
- Main Sail
- Main staysail
- Foresail
- Light air sails
- Three spinnakers
- Genoa
- Advance
- Gollywobbler

---

## Исключения

---

При продаже яхты исключаются личные вещи владельца.

---

## Отказ от ответственности

---

Компания предоставляет описание судна или яхты добросовестно, но не может гарантировать точность этой информации, а также не ручается за техническое состояние. Покупатель должен проинструктировать своих агентов или оценщиков исследовать представленную информацию более подробно, по собственному желанию.



Продажа судна или яхты, изменение цены или снятие с продажи будет происходить без предварительного уведомления.

# ФОТОГРАФИИ



Down Wind



Fordeck



Stern



Bow Pulpit



Port View



**Starboard view**



**Starboard Forward**



**Galley Starboard**



**Galley Port**



**Galley Leaded Glass**



**Galley**



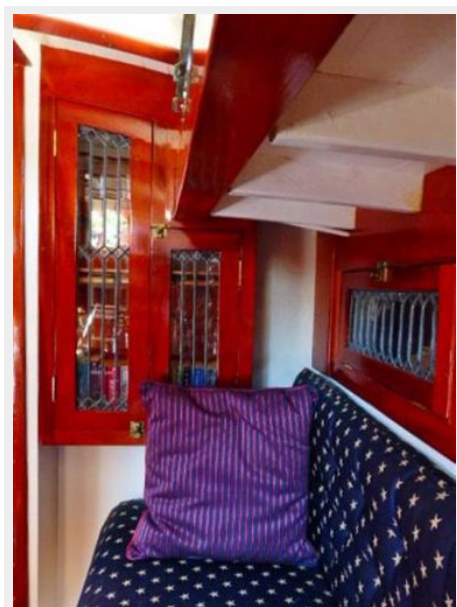
**Salon Aft**



**Salon Table**



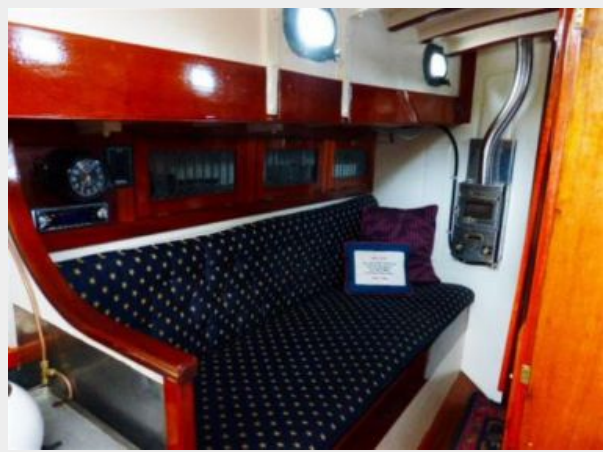
**Salon Starboard Foward**



**Salon Starboard**



**Salon Port**



**Fold Up Table**



**V-Berth**



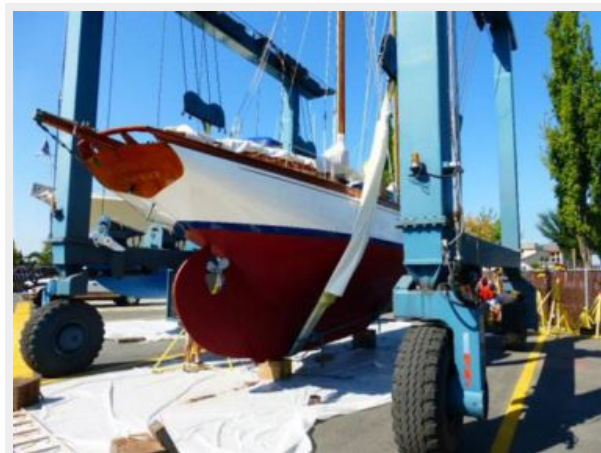
**On the Hard**



**On the Hard II**



**On the Hard III**



**Stern**



**Cockpit**



**Mast Head Fittings**



# КОНТАКТЫ

---

Андрей Шестаков (Andrey Shestakov) – ведущий яхтенный брокер отдела продаж яхт и судов компании Shestakov Yacht Sales Inc. Официальный представитель Shestakov Yacht Sales Inc. для русскоговорящих клиентов в центральном офисе компании в Майами/Форт Лодердейл/Флорида/США.

## Контактная информация

---

Email: [andrey@shestakovyachtsales.com](mailto:andrey@shestakovyachtsales.com)

Web: [shestakovyachtsales.com](http://shestakovyachtsales.com)

## Телефоны

---

Краснодарский край: **+7(918)465-66-44**

США, Майами, Флорида: **+1(954)274-4435**

## Время работы

---

Понедельник – Суббота: **9:00 - 21:00**  
EDT

Воскресенье: **Закрито**

## Адрес

---



Harbour Towne Marina, 850 NE 3rd St,  
STE 213, Dania, FL 33004