

GRACE — AMELS



Builder: [AMELS](#)

Year Built: 2009

Model: Motor Yacht

Price: PRICE ON APPLICATION

Location: Italy

LOA: 171' 8" (52.30m)

Beam: 31' 3" (9.50m)

Max Draft: 10' 10" (3.30m)

Cruise Speed: 12 Kts. (14 MPH)

Max Speed: 15 Kts. (17 MPH)

Our experienced yacht broker, Andrey Shestakov, will help you choose and buy a yacht that best suits your needs **GRACE — AMELS** from our catalogue. Presently, at Shestakov Yacht Sales Inc., we have a wide variety of yachts available on our sale's list. We also work in close contact with all the big yacht manufacturers from all over the world.

If you would like to buy a yacht **GRACE — AMELS** or would like help answering any questions concerning purchasing, selling or chartering a yacht, please call **+1(954)274-4435**

TABLE OF CONTENTS

TABLE OF CONTENTS	2
SPECIFICATIONS	4
Overview	4
Basic Information	5
Dimensions	5
Speed, Capacities and Weight	5
Accommodations	5
Hull and Deck Information	5
Engine Information	6
PHOTOS	7
GRACE - Aerial decks	7
GRACE - Aerial decks 2	7
GRACE - Main deck dining	7
GRACE - General aft veiw	7
GRACE - Running 2	7
GRACE - Main deck salon	7
GRACE - Running 3	8
GRACE - Running	8
GRACE - Still with toys	8
GRACE - Still	8
GRACE - Sun deck forward	8
GRACE - Sun deck and Jacuzzi	8
GRACE - Upper deck aft	9
GRACE - Twin cabin	9
GRACE - Upper deck forward	9
GRACE - Upper deck salon general	9
GRACE - VIP cabin 1	9
GRACE - Upper deck salon	9

GRACE - VIP cabin desk	10
GRACE - VIP cabin 2	10
GRACE -Master cabin	10
GRACE -Master stateroom general view	10
CONTACTS	11
Contact details	11
Telephones	11
Office hours	11
Address	11

SPECIFICATIONS

Overview

Delivered in 2009 by Amels shipyard, GRACE is a 52.30m (171') superyacht from the Amels Limited Edition series with an exterior design from Tim Heywood that has been the world's best-selling 55-metre superyacht since 2007. The full displacement hull and her large volume of 649 GT provide high comfort with ocean-going performance to discover destinations all over the world, together with a modern classic design. GRACE was never available for charter, and as a result is offered in pristine condition.

Her wide outdoor spaces are among the major specificities of GRACE and the Amels 171 Limited Editions. From the generous swim platform and garage, to the Main deck aft with a large lounge seating area with exterior sets done by Summit and custom made furniture by Metrica. Your first steps on board already give the tone of her perfect quality. The Bridge deck aft offers another option to lounge, with a dining area for 10 guests (custom made design), the crane can be used to place tenders from Fore deck to Bridge deck aft during potential Atlantic crossings. Going up to the panoramic Sun deck with Jacuzzi, bar and an extra option for al-fresco dining with a table for 10 persons.

GRACE's interior is designed by Nuvolari Lenard studio: encompassing rich dark colours reflected by wengé wood and dark leather, and the light colours are shown by white oak, alcantara fabric and light capria leather. Accents are given by a high gloss varnish on the wood. Custom made fittings provide distinguished and original detailing throughout the interior. Starting from the Main deck salon with lounge, table for 8 guests and TV MD Salon does not have a TV only in BD salon with Crestron system throughout the vessel, the cosy area continues up to the full-width Bridge deck salon fitted with projector and cinema screen from ceiling. GRACE also includes a layout with six cabins, comprising of a full-width en-suite Master with large bathroom, dressing room, fully operational office with a swivel TV, and a double en-suite Guest cabin on Main deck; plus four Guests cabins on Lower deck: 2 Double cabins on starboard side, all en-suite, and 2 Twin cabins on port side. The aft cabins are interconnecting with the port side Double cabin, via sliding door, an ideal addition for guests with children.

GRACE has a large set of watersport toys and is cruised by an experienced crew of 13. She truly is one superyacht not to be missed!

Basic Information

Category: Motor Yacht

Model Year: 2009

Year Built: 2009

Refit Year: 2016

Refit Type: Hull repaint

Country: Italy

Vessel Top: Open

Dimensions

LOA: 171' 8" (52.30m)

Beam: 31' 3" (9.50m)

Max Draft: 10' 10" (3.30m)

Speed, Capacities and Weight

Cruise Speed: 12 Kts. (14 MPH)

Cruise Speed Range: 4500

Max Speed: 15 Kts. (17 MPH)

Gross Tonnage: 642 Pounds

Fuel Capacity: 117000 Gallons

Fuel Consumption: 400 Gallons

Accommodations

Total Cabins: 6

Sleeps: 12

Crew Sleeps: 14

Hull and Deck Information

Hull Material: Steel

Deck Material: Teak

Hull Color: Light Grey

Exterior Designer: Tim Heywood

Interior Designer: Nuvolari Lenard Studio

Engine Information

Engines: 2

Manufacturer: MTU

Model: 16V2000 M70

PHOTOS

GRACE - Aerial decks



GRACE - Aerial decks 2



GRACE - General aft veiw



GRACE - Main deck dining



GRACE - Main deck salon



GRACE - Running 2



GRACE - Running 3



GRACE - Running



GRACE - Still with toys



GRACE - Still



GRACE - Sun deck and Jacuzzi



GRACE - Sun deck forward



GRACE - Twin cabin



GRACE - Upper deck aft



GRACE - Upper deck forward



GRACE - Upper deck salon general



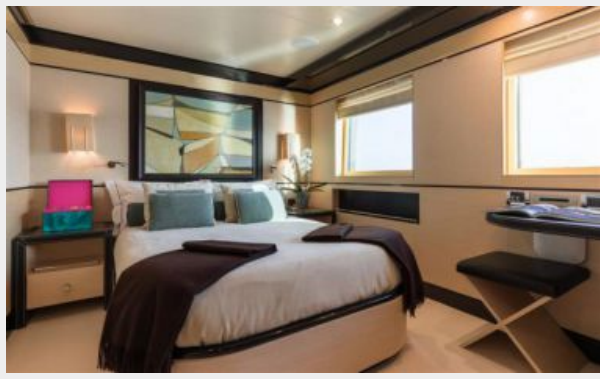
GRACE - Upper deck salon



GRACE - VIP cabin 1



GRACE - VIP cabin 2



GRACE - VIP cabin desk



GRACE -Master cabin



GRACE -Master stateroom general view



CONTACTS

Andrey Shestakov, leading yacht broker of the sales department of Shestakov Yacht Sales Inc. Shestakov Yacht Sales Inc., the official representative of the Miami/Fort Lauderdale FL headquarters.

Contact details

Email: andrey@shestakovyachtsales.com

Web: shestakovyachtsales.com/en/

Telephones

USA: +1(954)274-4435

Office hours

Monday – Saturday: **9:00 - 21:00** EDT

Sunday: **closed**

Address



Harbour Towne Marina, 850 NE 3rd St,
STE 213, Dania, FL 33004