

FREEDOM — HARGRAVE



Builder: HARGRAVE

Year Built: 2016

Model: Cruising Yacht

Price: PRICE ON APPLICATION

Location: United States

LOA: 95' 0" (28.96m)

Beam: 22' 0" (6.71m)

Min Draft: 5' 11" (1.80m)

Max Draft: 5' 6" (1.68m)

Cruise Speed: 21 Kts. (24 MPH)

Max Speed: 24 Kts. (28 MPH)

Our experienced yacht broker, Andrey Shestakov, will help you choose and buy a yacht that best suits your needs **FREEDOM — HARGRAVE** from our catalogue. Presently, at Shestakov Yacht Sales Inc., we have a wide variety of yachts available on our sale's list. We also work in close contact with all the big yacht manufacturers from all over the world.

If you would like to buy a yacht **FREEDOM — HARGRAVE** or would like help answering any questions concerning purchasing, selling or chartering a yacht, please call **+1(954)274-4435**

TABLE OF CONTENTS

TABLE OF CONTENTS	2
SPECIFICATIONS	3
Overview	3
Basic Information	3
Dimensions	3
Speed, Capacities and Weight	4
Accommodations	4
Hull and Deck Information	4
Engine Information	4
DETAILED INFORMATION	5
YACHT DESCRIPTION AND DETAILS	5
Exclusions	8
Disclaimer	8
PHOTOS	9
CONTACTS	15
Contact details	15
Telephones	15
Office hours	15
Address	15

SPECIFICATIONS

Overview

Key Features: Built on Jack Sarin hull, FREEDOM offers four suites for owners and guests plus two cabins for up to four crew.

Powered by twin CAT C-32 Acert engines, 1925 hp

Contemporary architecture and design.

Basic Information

Category: Cruising Yacht	Sub Category: Flushdeck
Model Year: 2016	Year Built: 2016
Country: United States	Fly Bridge: Yes
Cockpit: Yes	

Dimensions

LOA: 95' 0" (28.96m)	LWL: 82' 9" (25.22m)
Beam: 22' 0" (6.71m)	Min Draft: 5' 11" (1.80m)
Max Draft: 5' 6" (1.68m)	Clearance: 34' 10" (10.62m)

Speed, Capacities and Weight

Cruise Speed: 21 Kts. (24 MPH)

Max Speed: 24 Kts. (28 MPH)

Water Capacity: 600 Gallons

Holding Tank: 150 Gallons

Fuel Capacity: 3600 Gallons

Accommodations

Total Cabins: 4

Sleeps: 8

Total Heads: 5

Crew Sleeps: 3

Crew Heads: 2

Hull and Deck Information

Hull Material: Fiberglass

Engine Information

Engines: 2

Manufacturer: CAT

Model: C32 ACERT

Engine Type: Inboard

Fuel Type: Diesel

DETAILED INFORMATION

YACHT DESCRIPTION AND DETAILS

The owner of this yacht is a developer with a very keen sense of contemporary architecture and design. He knew what the yacht was going to look like from first meeting and a blank piece of paper. He and his wife wanted the yacht to be reflective of their minimalist and tailored taste. There are a handful of finishes, textures and fabrics that are repeated throughout the yacht. All are very neutral palette of grays, pale taupes and several shades of white. Combined they create a harmonious, organic and soothing interior.

Main Salon and Dining description: Full beam room with large TV/entertainment center. There is a spacious, deep sectional sofa with a glass and taupe veneer cocktail table. Sculptural wood frame chair aft with ottoman. Lacquer walls and ceiling panels with driftwood floor planks. A few complimentary contrast cabinets in Taupe wood strategically placed. Plush wool area rug and cashmere throw pillows. Square dining table with Italian all leather gray chairs. Sheer linen roman shades gently diffuse the light. Walls - Lacquer paint/panel cabinets-Light Gray Freestanding cabinets - Taupe/Walnut engineered veneer. Headliner and Cabinets- Lacquer paint- Snow White Hardware & lights - Square/Brush Nickel Glass and S/S stair enclosure to master stateroom Custom Square dining table - 57" x 57" **Galley and Lower Helm:** The galley doubles as an inside helm when needed. The settee is long enough for someone to lie down while on anchor watch. There is a spacious rectangular settee across from the tailored functional island. The cooktop is highlighted by SS drop down hood and 1' x 1 ½" S/S backsplash. There is a pantograph door to the side deck, as well as interior stairs to the deck above. Flooring- Porcelanosa-Oxford Acero Cabinets-Combination of Lacquer and gray veneer Countertops- Silestone-Blanco Maple with 1 ½" straight edge Backsplash-Metal Mosaic Lancer brush metal tile 1' x 1 ½" Appliances-Broan hood, Subzero refrigerator drawers, GE tall refrigerator, Franke sink, Blanco faucet, GE cooktop and oven, Fisher Paykal Dishwasher

Stairs lead down from the lower helm to three of *Freedom's* four ensuite staterooms: the forward VIP, starboard VIP, and port cabin with twin berths that convert to a queen. Clever space-planning and the use of low cabinetry make these guest cabins feel truly spacious. The décor, featuring shades of white, taupe and light gray, along with crisp white linens and large portholes, creates a clean, bright ambiance. LED lighting works effectively with the subtle color palette.

Master Stateroom: The owner's suite is full-beam; large enough to incorporate a long bench seat opposite the berth. The head has twin sinks and a huge shower with textured tile. But though the owner's accommodations are larger than the guest cabins, they are furnished in the same minimalistic style, accented by white Carrera marble countertops rather than more exotic stonework. The full-beam master stateroom looks like a posh Tribeca hotel, with its uncluttered Euro-style decor. The soft neutral tones maximize the natural light coming through the hullside windows. The Master head has twin Kohler sinks and a walk-in shower. **Flybridge:** The flybridge helm is raised for optimal visibility. It is flanked by two settees where guests can comfortably watch the waters ahead. Two steps down, the flybridge encompasses a granite-

topped bar with refrigerator and grill, and a large dining table that can seats 18 people. The deck can be air-conditioned all the way back to the end of the hard top. Behind dining and bar area is a sunlounge and a six-person superyacht hot tub. Even more so is the size of the boat deck aft, occupied by an AB RIB tender and its davit, with room to spare for kayaks and paddleboards.

Crew Quarters: The crew quarters in the transom area are laid out with just as much care as the guest accommodations. The captain has a double-berth cabin and en-suite head, and there is a bunkroom for two served by a second head. **Engine Room:** The engine room, forward, boasts 7.5' headroom. It is well air-conditioned and has a CCTV system. There is ample space to service the twin Caterpillar C-32s diesels, which give *Freedom* a top speed of 24 knots and an easy cruise of 18 knots.

Mechanical Equipment: Head Hunter waste treatment center 200gpd (2) Northern Lights 38kw 60HZ Single Phase Generators Second steering pump on engine Third layer of insulation between Engine Room and Master Stateroom Mastervolt Battery Charger 30AMP 12V + 30AMP 24V+ 80AMP (2) 100 AMP Mastervolts AC/DC light transformer 110/24V Watertight bulkheads in Engine Room Naiad stabilizer system Model 360 w/18.3 sq.ft fin w/Datum control At Rest System Hydraulic noise suppressors for Naiad thruster & stabilizer system Double stabilizer & bow thruster backup pump on back of Port & Starboard Transmissions Naiad 16SHT 46hp hydraulic Bow Thruster Naiad 38hp Stern Thruster Hydraulic (4) Delta-T Filters and Delta-T Fans Algae X fuel filter system x 2 Engine room Sea-Fire w/manual pulls FM 200 Glendinning w/1 remote (3) fixed stations and bow and stern thruster controls at each station and a power on off switch at each station for thruster Remote Plug for Glendinning Engine Control at Port side of Helm Console in Fly Bridge (2) Jabsco 6050-0003 AC bilge pumps on Engine Room floor with plumbing, (4) pickup and overboard discharge Oil change Reverso oil pump Fuel change Oberdorfer oil pump w/ Fillrite flow meter 100 amp Cablemaster systems w/125' cord Hot water circulating pump Cruiseair Chilled Water A/C System (3 x 5 Tons) Spurs Shaft line cutter for 4" shaft Tide Seal Marine dripless shaft logs & rudder post Kahlenberg D-OA Stack Trumpet Air Horn Nutone CV357 central vacuum system 1 Newmar 50 amp dc24 12volt converter ACME transformers with USA supplied booster switch under the generators (2) Torrid vertical 40 US Gallons water heater in white finish Water Drop Exhaust to generators Mufflers for Main Engine idle by-pass Automatic Air Door w/Sensor and Manual Override at Aft Deck w/push button w/light on door Smoke Detection and Alarm System SeaFire **Interior Equipment:** Matte Lacquer Pantone 12 0404TPX painted wood doors, frames, trim and cornices in: Main Salon, Master, VIP, Port & Starboard Guests, Galley and Pilothouse Vimar switches plus (12) dimmers Cantalupi Point Q (Brushed Nickel Square Lighting throughout vessel (2) Cantalupi "MOSCA" Reading light in Brush Nickel and Dark Leather, Goose Arm Vimar Brushed Nickel Switch/Outlet Plate throughout the Boat Silestone Blanco Counter Top in Galley Pull-Out Pantry in Galley Marble Dining Console Table Top in Salon Marble Top And Walk-Up Bar in Salon Wood Flooring in Main Salon, Master Stateroom & (2) sets of Stairs and Landings 6" X 35" Porcelanosa Floor Tile "Oxford Acero" in Galley Porcelanosa OXO Lines Blanco wall tile in Master Head Porcelanosa OXO Lines Blanco wall tile in Bathroom & Shower Wall Tile in Master Marble Top for night stands in Master Stateroom Marble floor for Master and Dayhead Marble Shower Seat in Master Frameless Glass Shower Door in Master, VIP, Port & Starboard Guests Custom Bench with cushion in Master Stateroom (4) 9" Mattress in VIP, Port & Starboard Guest and Master Kohler

sinks in bathrooms Grohe Brushed Nickel Shower handheld Spray in VIP, Port & Starboard Guests and with fixed Shower Head in Master Settee with Hi-Lo & sliding table in Dining and bunk position in Crew Lounge Sliding mechanism to allow (1) single bed to slide in Port Guest Cabin Safety rails around twin engines in Engine Room **Exterior Equipment:** (8) Waterproof lights on bow Quartz lights on aft deck Flood lights under radar arch x 2 FRP Cabinet for Grill on Flybridge S/S Railing around the Spa Tub in Flybridge (2) S/S Railing for access panel of SPA TUB in Flybridge (2) S/S railing for starboard FRP Settee in Flybridge Custom Bar w/granite top and w/3 SS Bar Stools on Flybridge (1) FRP Bar for Fridge / Freezer on FlyBridge (1) FRP cabinet aft of FlyBridge seating Port helmsman seat with cushion on Flybridge table with teak table top and leaf on FlyBridge S/S Foot Rest for Forward Port & Starboard FRP Cabinet and seating in Flybridge 3" Noticeable Plank Style Table Top w/Matte finish and Hard Wood Edge in Flybridge Aft deck bench seating Aft deck teak chairs (6) 3" Noticeable Plank Style Table Top w/Matte finish and Hard Wood Edge at Aft Deck Locker on Aft Deck to store boarding ladder (6) "U" shape stanchions at swim platform Hot tub with fiberglass box and equipment (1) Freeman hatch 24" X 24" with escape ladder at Aft Deck **Appliances:** GE White Washer in Forward Guest Foyer GE White Dryer in Forward Guest Foyer U-LINE Black Fridge (Reversible Hinge) in Crew Lounge GE White Microwave in Crew Lounge GE White Dryer in Crew Lounge FRANKE Sink with standard Faucet in Crew Lounge GE S/S Fridge in Galley Sub-Zero ID-24R Drawer Fridge (Panel Overly) in Galley Broan S/S Hood in Galley GE Profile Black Glass Cooktop in Galley GE Profile S/S Oven in Galley GE Profile S/S Microwave in Galley Fisher & Paykal S/S Dishwasher in Galley GE Black Disposal in Galley Franke S/S Galley Sink in Galley VIGO Steel Faucet in Galley Instant Hot Satin Nickel Dual Temp. Faucet (Hot & Cold Tap) Insinkerator F-HC1100 Satin Nickel in Galley Instant Hot SST-FLTR Satin Nickel Tank & Filter (S/S Tank & F201 Filtration System in Galley Trash Drawer REV-A-SHELF in Galley U-Line Black Fridge (Reversible Hinge) in Main Salon U-Line Black Ice Maker (Including Drain Pump) in Main Salon U-Line U-CLR1215B-40A Black Ice Maker (Including Drain Pump) on Aft Deck U-Line S/S Fridge (Reversible Hinge), Outdoor Series on Flybridge U-Line Black Ice Maker (Including Drain Pump) on Flybridge FireMagic 3C-S1S1P-A/Propane Grill with Insulation Liner on Flybridge Marzi PD White Sink on Flybridge Flybridge Bar Faucet on Flybridge Spa City 80.5" Octi-Round Hot Tub on Flybridge **Audio and Video:** KVH 2014 Tracvision HD7 mounted at Mast Samsung 40" LED TV mounted at Flybridge (port side behind helm bench) Samsung 40" LED TV mounted at Aft Deck Samsung 55" curved-screen high definition TV mounted at Main Salon Samsung 40" LED TV mounted at Galley Samsung 24" LED TV mounted at Captain Cabin Master Samsung 28" LED TV mounted at Port Guest Stateroom Samsung 32" LED TV mounted at Starboard Guest Samsung 32" LED TV mounted at VIP Forward Guest **Navigation:** Furuno MFDBB black box processor w/control Navnet3d monitor required mounted at Void Space Furuno NAV 3D 12KW, 72N.M. 6' ARRA mounted at Mast Furuno BBWGPS Black Box WAAS/GPS Navnet compatible Furuno NAV 3D 12KW, 72N.M. 6' ARRA mounted at Hard Top Furuno NAV 3D 12KW 30M Sensor CA mounted at Hard Top Furuno BBWGPS Black Box WAAS/GPS Navnet mounted at Hard Top Nobeltec Furno Radar Plus Pack overlay KEP Marine KMGBL-15 x 4 mounted at Lower Helm Standard GX5500S Fixed Mount VHF x 3 mounted at Flybridge x1, Pilothouse x1 & Captain x1 Standard CMP30 RAM MIC x 2 mounted Fly Bridge x1 & Pilothouse x1 Newmar Hailer Horn 60/40 x 2 mounted at Hard Top Furuno FA50 Class B AIS Transponder Furuno Fa50 Antenna CBL 30M Digital 500 Series 8' Marine AIS FURUNO RD33 Color LCD

Remote Display (2) mounted at Lower Helm FURUNO RD33 Color LCD Remote Display (2) mounted at Flybridge Furuno 200WX Ultrasonic Weather Station, NMEA 2000 mounted at Hard Top Furuno GP33 Color LCD GPS/WAAS Receiver mounted at Lower Helm Noland NMEA 0183 Hi Speed Way x 2 mounted at Lower Helm Furuno Navpilot 700 Autopilot w/heading sensor and 4.6" Display Furuno Navpilot 700 2ND Station Control Furuno FPS8 power steering module Furuno PUMPHRP17-24 Flir M-324XP KVH Tracphone V3-IP KVH Tracvision M7 Dummy 24" Dome Panasonic PH 824 ADV Hybrid KSU Panasonic PH T-7731-Black Speaker Phone x 4 for Galley, Main Salon, Master and Crew Galley ACR RCL 100D 24VDC Spotlight x 2 mounted at Hard Top 17VST AB Tender W/90hp Yamaha Safety Package - Life Jackets/Fenders/Fire Extinguishers/Dock Lines/Flares Winslow 6 Man Ultra Light Life Raft Quick Lift 2500lb Davit 1800 GPD BWD-Explorer Compact Watermaker Dometic Spot Zero 2000GPD Water Purification Unit w/Water Maker Processing (2) Stidd 500N Low Back "Slimline" Admiral Chairs on Flybridge EdgeStar FP861 80 Quart 12 volt DC Portable Fridge/Freezer on FB

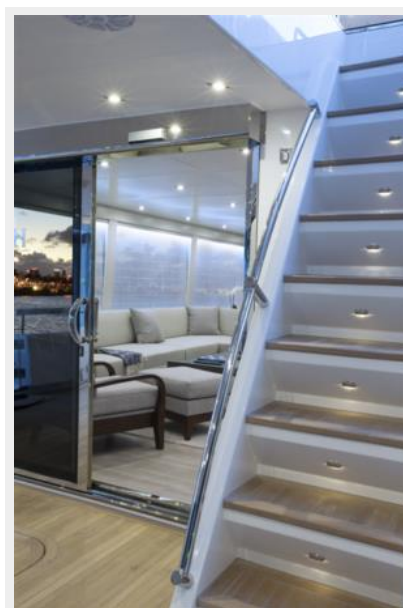
Exclusions

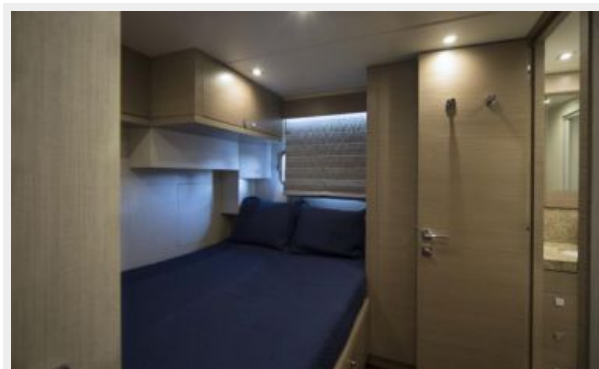
Owner's personal belongings.

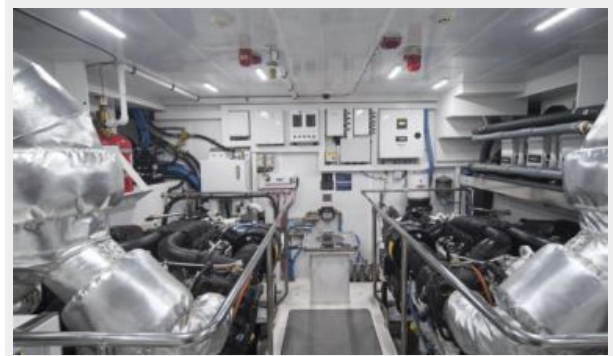
Disclaimer

The Company offers the details of this vessel or yacht in good faith but cannot guarantee or warrant the accuracy of this information nor warrant the condition of the vessel. A buyer should instruct his representatives, agents, or his surveyors, to investigate such details as the buyer desires validated. This vessel or yacht is offered subject to prior sale, price change, or withdrawal without notice.

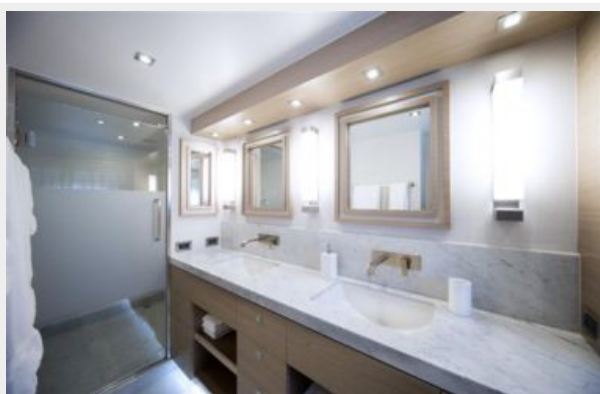
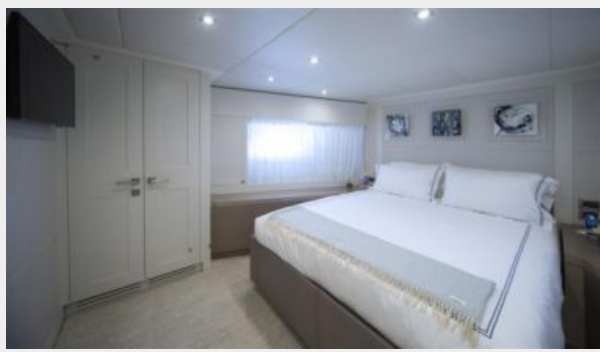
PHOTOS













CONTACTS

Andrey Shestakov, leading yacht broker of the sales department of Shestakov Yacht Sales Inc. Shestakov Yacht Sales Inc., the official representative of the Miami/Fort Lauderdale FL headquarters.

Contact details

Email: **andrey@shestakovyachtsales.com**

Web: shestakovyachtsales.com/en/

Telephones

USA: **+1(954)274-4435**

Office hours

Monday – Saturday: **9:00 - 21:00 EDT**

Sunday: **closed**

Address



Harbour Towne Marina, 850 NE 3rd St,
STE 213, Dania, FL 33004