

44 2008 AFRICAN CATS FASTCAT 445 — CUSTOM BUILT



Builder: CUSTOM BUILT

Year Built: 2008

Model: Catamaran

Price: PRICE ON APPLICATION

Location: United States

LOA: 44' 0" (13.41m)

Beam: 24' 5" (7.44m)

Min Draft: 3' 9" (1.14m)

Max Draft: 4' 0" (1.22m)

Our experienced yacht broker, Andrey Shestakov, will help you choose and buy a yacht that best suits your needs 44 2008 African Cats FastCat 445 — CUSTOM BUILT from our catalogue. Presently, at Shestakov Yacht Sales Inc., we have a wide variety of yachts available on our sale's list. We also work in close contact with all the big yacht manufacturers from all over the world.

If you would like to buy a yacht 44 2008 African Cats FastCat 445 — CUSTOM BUILT or would like help answering any questions concerning purchasing, selling or chartering a yacht, please call +1(954)274-4435

TABLE OF CONTENTS

TABLE OF CONTENTS	2
SPECIFICATIONS	4
Overview	4
Basic Information	4
Dimensions	5
Speed, Capacities and Weight	5
Accommodations	5
Hull and Deck Information	5
Engine Information	5
DETAILED INFORMATION	6
2018 Updates	6
Construction	6
Dimensions	6
Engines	7
Tankage	7
Interior Layout	7
Electronics	8
Mechanical and Electrical	8
Galley	8
On Deck	9
Safety	10
Manufacture Provided Description	10
Exclusions	11
Disclaimer	11
PHOTOS	12
CONTACTS	19
Contact details	19
Telephones	19

Office hours	19
Address	19

SPECIFICATIONS

Overview

BLUEWATER 44 CATAMARAN WITH DOUBLE-OWNER SUITES

A custom-built **Class A bluewater catamaran**, she was built to cross oceans and she has magnificently done so! Loaded with all of the bells and whistles including: **reinforced hulls with Twaron woven mat** (similar to Kevlar), **epoxy vacuum resin infusion construction** process ensuring the hulls remain immune from water-absorption and osmosis, twin in-board Lombardini engines with **less than 1200 hours**, two owner suites each with a **king-size berth, SLCE Aquabase watermaker @15 gals/hr, 3 Sanyo 210 watt panels**, wind generator, **2018 Highfield aluminum dinghy** and **2018 Yamaha 15HP outboard**, SSB and more! Review listing for full inventory of all that she brings to her new owner.

The FastCat 445 and was designed by Angelo Lavranos based on first principles to be light, strong and fast. With her double-owner layout, she was built with the private owner cruiser in mind, rather than the typical charter-market catamaran. She is well equipped to be a safe, fast, passage-making vessel. Her light but strong design facilitates a maximum payload of 5 tonnes - a very useful feature when living aboard. The cockpit layout allows her to be sailed without ever needing to leave its safety. Unlike many other production catamarans which are constructed with polyester resin, her deck and hulls are epoxy resin-infused, ensuring she remains osmosis free.

Original owner's quote after her shakedown cruise "If a shakedown cruise is intended to test a boat fully, then rounding the Cape of Good Hope has proved to be a damned good choice. From Saturday onwards, we have been bounced around big time – and I do mean, BIG TIME! Wave and wind have done their damndest to put her through her paces. And all we can say is she appears to have passed the test well – at no point did we ever feel unsafe or fear for her ability to cope with it all. "

Basic Information

Category: Catamaran

Sub Category: Performance Sailboat

Model Year: 2008

Year Built: 2008

Country: United States

Dimensions

LOA: 44' 0" (13.41m)**LWL:** 41' 3" (12.57m)**Beam:** 24' 5" (7.44m)**Min Draft:** 3' 9" (1.14m)**Max Draft:** 4' 0" (1.22m)**Clearance:** 64' 0" (19.51m)

Speed, Capacities and Weight

Displacement: 14991 Pounds**Water Capacity:** 66 Gallons**Holding Tank:** 14 Gallons**Fuel Capacity:** 66 Gallons

Accommodations

Total Cabins: 3**Total Berths:** 6**Total Heads:** 2

Hull and Deck Information

Hull Material: Composite**Hull Configuration:** Catamaran

Engine Information

Engines: 2**Manufacturer:** Lombardini**Model:** LDW1404**Engine Type:** Sail Drive**Fuel Type:** Diesel

DETAILED INFORMATION

2018 Updates

- Wind generator New bearing and circuit board - Jan 2018
- Replaced Doors on the refrigerator - Jan 2018
- Replaced Circuit board for refrigerator - Feb 2018
- Replaced Macerator pump Port side - Feb 2018
- Replaced House Batteries 3 wet cell - 220Ah April 2018
- New Highfield Aluminum 10 ft ultralight dinghy (2018)
- New outboard engine - Yamaha 15 hp (2018)New

Construction

This African Cats FastCat 445 is both strong and light-weight, ensuring she sails fast and safely. This is achieved by the use of an epoxy vacuum resin infusion construction process (the use of epoxy, the premium boatbuilding resin, ensures the hulls remain immune from water-absorption and osmosis). The boat was built in two halves using female moulds layered with woven glass fibre mat, a Divinycell core and a final layer of woven mat. The hulls are also reinforced with the Twaron woven mat (similar to Kevlar) for improved impact resistance.

The keels, rudders, mast step and high load elements of the structure are also reinforced with carbon fibre. Many of her internal furniture fittings are constructed from Nomex honeycomb material - often used in aircraft manufacture (high strength / low weight). The structures then fibre-glassed into position ensuring rigidity and no movement when sailing, making her quiet when under sail - i.e. none of the creaking noises so common to many production catamarans. The structure of the boat includes sufficient Divinycell foam to make the boat unsinkable. In addition, there are 6 (3 in each hull) water-tight buoyancy compartments. Mast and rig were commissioned to facilitate transiting the ICW in the USA (total height 64 ft)

Dimensions

- LOA - 44 ft (13.4 m)
- Beam - 24.5 ft (7.46m)
- Draft - 4 ft (1.2 m)
- Bridge clearance - 64 ft (19.5 m)
- Weight light ship - 14991 lbs (6800 Kgs)
- Bridge deck clearance 41 inches (1.04m average)

Engines

- Engine brand - Lombardini
- Total power: -80 hp (59.66 kw)
- Engine model - LDW1404
- Engine type - Twin in-board diesel
- Engine hrs - 1070 hrs
- Each engine has in-line diesel bug treatment, 2 x diesel filters as well as Racor water separators
- Each engine has a raw water strainer and anode protection
- Each engine control panel has engine hrs meter, charge warning light, engine temperature and oil pressure gauges and electric fuel cut off switches.
- Drive type - Sail drive
- Propeller - 3 blade folding Autostream
- Cruising speed - 7 knots

Tankage

- Fresh water: 2 at 66 US gals each US gals (500 ltrs total)
- Fuel tanks: 2 at 66 US gals each (500 ltrs total)
- Holding tanks: 2 at 14 US gal each (55 ltrs total)

Interior Layout

- Number of double berths - 2 x full king size, 3 x additional sleeping berths are available
- 2 x electric heads and 2 x separate showers with electric pump out
- Interior finishes - vinyl foam liner, maple wood veneer, Wilson Art laminate, and 2 pack Awlcraft paint (shade: snow white)
- Type of flooring throughout the interior - Polyflor Polysafe Hydro (antislip and waterproof)
- Saloon coffee/dining table - dining table can seat 8 when raised and extended; folds and lowers to form a coffee table.
- Storage space - exceptional internal storage space including 2 x hanging lockers, 26 x cabinets and 6 x drawers and 12 x shelves.
- Also 4 x lockable concealed containers for valuables.
- Nav station, including chart storage facility, and galley are up on the bridge deck
- Interior lights are all LED including dimming facilities, reading lights, and red lights for night sailing.
- Watermaker - 15 gals /hr (60 lts) SLCE Aquabase ESW 601 (energy- efficient pressure recovery type)
- Reserve Katadyne 35 watermaker included
- Hot water tank Isotherm dual spiral 40 lts (heating from electrical energy and port engine)
- Cabin fans x 5

Electronics

- Raymarine chart plotters - internal E120, external E80
- Depth sounder and log - Tacktick
- Wind speed and direction - Tacktick (with Micronet digital and analog displays)
- Autopilot - Raymarine S2G
- Compass, Raymarine fluxgate and Plastimo magnetic
- GPS - Raymarine
- VHF Radio only Standard Horizon CPV 350
- SSB Icom 802
- Radar Raymarine
- Send and receive AIS Easy TRX (signals integrated into chart plotters)
- Radio / CD player (Polyplaner)
- Handheld radio - Standard Horizon

Mechanical and Electrical

- Solar panels 3 x Sanyo 210 watts (630 watts total)
- Generator - Stand alone Honda EU 2000 (2 kw)
- Mastervolt integrated inverter charger 4 kw
- Each engine has 1 x 100 amp alternator and 1 x 80 amp alternator (4 alternators total)
- Each alternator is controlled by a Sterling smart controller
- House batteries 3 x 220 amp hr (2018)
- 2 x 80 amp hr AGM engine start batteries. The start batteries are charged via a Blue Sea automatic charge relay. In an emergency, the house batteries can be switched to start the engines
- Battery monitor is via the Mastervolt control panel
- There are 8 x 220 volt sockets and 4 x 12 volt sockets
- Sail drives - Lombardini

Galley

- Front-opening Isotherm Inox air-cooled fridge/ freezer model
- Top-opening water-cooled chiller unit can be switched to either fridge or freezer
- 2 x stainless steel galley sinks each supplied with hot and cold fresh water as well as salt water
- Molded Corian work-surfaces and draining recess
- Alpes Inox 4 burner stove
- Smeg full-size oven
- Microwave oven
- Full set of cutlery, plates, glasses, cups, cooking utensils, saucepans, food mixer, blender, electric whisk.

On Deck

- 2 x lockers forward(very large) and 3 x cockpit lockers
- 3 x 25lbs capacity composite gas storage tanks
- Winches - powered primary winch (most sheets and halyards can be fed to this winch)
Meissner 48ST
- 2 x Meissner 44 ST winches for main sheet control
- 2 x Meissner 54 ST winches for genoa sheets / spinnaker sheets
- 9 x rope clutches
- 10 x docking cleats
- 2 x Bow pulpit seats
- 2 x Stern seats
- Retractable Swim ladder (retracts inside sugar scoop)
- Dinghy - Highfield Aluminum 10 ft ultra light (2018)
- Outboard - Yamaha 15 hp (2018)
- Twin helm seat
- Cockpit seating for 7 persons
- Cockpit table converts to double bed / sun lounger
- Cockpit has LED lights including, red for night sailing, table lights, spreader light, sugar scoop lights, underwater lights
- Cockpit has fresh water hot /cold shower and salt water shower
- Salt water deck wash / anchor chain wash
- Large carbon fibre rigid bimini
- Cockpit enclosure awnings
- Standing rigging, compact strand (Dyform) with PBO side stays
- All running rigging is Dyneema
- Stack pack with lazy jacks
- Primary anchor - Rocna 88lbs (40 kgs) on 300ft of Aqua 70 8 mm high test calibrated anchor (breaking load 7 tonnes) bought in 2014
- Secondary anchor - Rocna 35 lbs (16 kgs) with chain and lead weighted line
- Windlass - Muir electric 2200 with remote control, capable of lifting 1 tonne
- Dyneema netting Trampoline (installed 2013)
- Bumpers (fenders) x 10
- Fender steps x 2
- Dock lines x 8
- Carbon fibre davits
- Hatches BSI off-shore x 12
- Portlights BSI x 8
- UV window covers x 5
- Sea kayak with paddle
- Snorkel marker float

- Fishing rod /reel and lures

Safety

A key safety feature of the boat is that she was designed to be sailed single-handed without the need to leave the cockpit. Both the fully-battened mainsail and the roller-furling genoa can be deployed, lowered and reefed (single line reefing) from within the safety of the cockpit. Other safety features include:

- Back up autopilot steering using a linear actuator
- Life raft - 6 man ProSaver (serviced 2013)
- Life vests – 4 x inflatable Marinepool 275 Newton and 5 x non-inflatable
- Safety harnesses x 1
- Ditch bag
- Fire extinguishers x 3
- Automatic engine fire extinguishers x 2
- Fire blanket
- CO2 alarm
- Automatic gas detection shut off and alarm
- Jordan series drogue with bridle, reinforced sugar scoops and D ring / cleat for drogue attachment
- Hydraulic steering with hydraulic-powered autopilot
- Reserve linear actuator powered autopilot
- Emergency tiller bar deployed from starboard sugar scoop
- 1 x manual bilge pump and 8 x electric bilge pumps
- Loudhailer with fog horn
- Mast-mounted remote operation spotlight and hand-held 1 million candle power search light
- Ship's barometer, clock, air temperature and humidity gauge

Manufacture Provided Description

The FastCat 445 represents a luxury and performance catamaran. At the helm of this sleek Angelo Lavranos design, you will be amazed at the ease with which you can cruise along in the mid to high teens. After you reluctantly give up the helm and go inside for refreshments you will be astonished that a boat can go this fast and have so much interior luxury. After a relaxing snooze in one of the two huge staterooms you go out for your turn at the helm (assuming you can pry the fingers of the current helmsman off the wheel) and find it hard to believe you were so comfortable inside while effortlessly sailing at astonishing speeds.

Exclusions

Owner's personal belongings.

Disclaimer

The Company offers the details of this vessel or yacht in good faith but cannot guarantee or warrant the accuracy of this information nor warrant the condition of the vessel. A buyer should instruct his representatives, agents, or his surveyors, to investigate such details as the buyer desires validated. This vessel or yacht is offered subject to prior sale, price change, or withdrawal without notice.

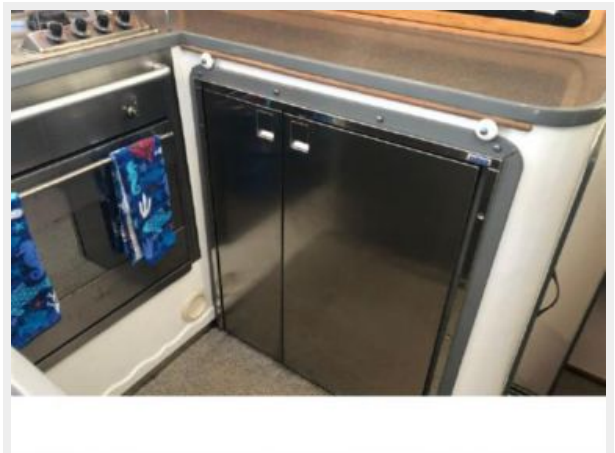
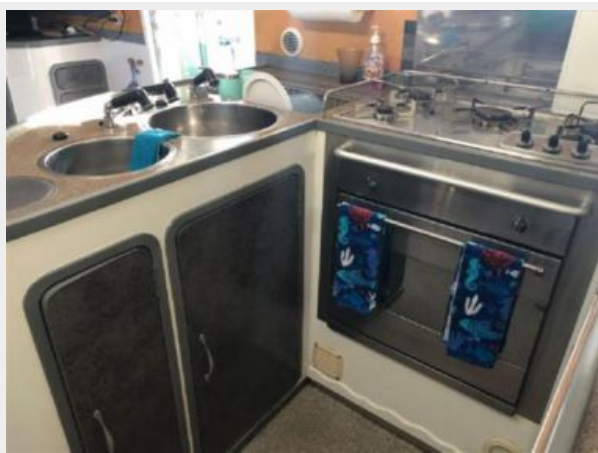
PHOTOS

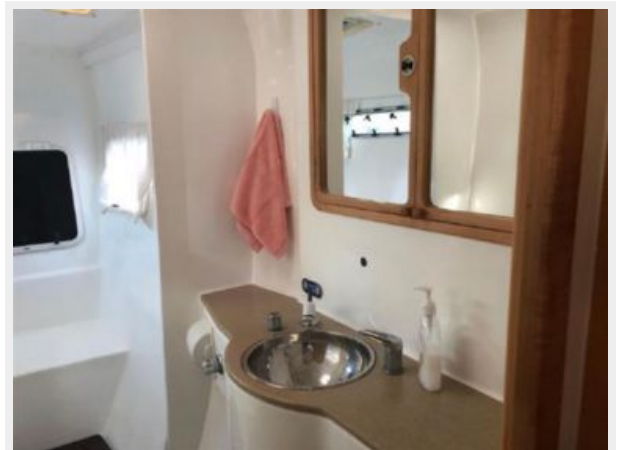


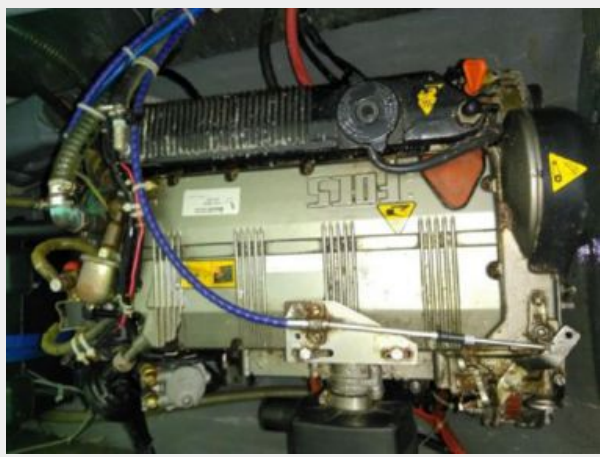
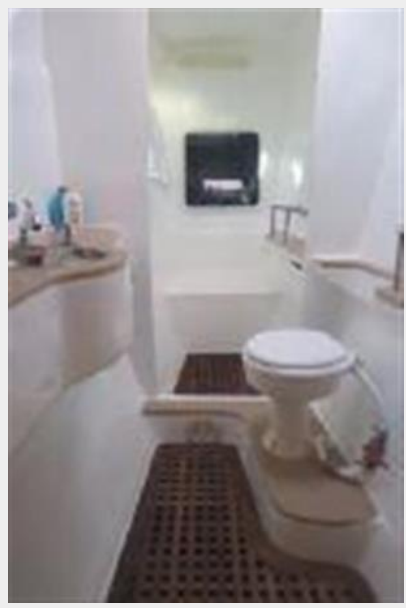












CONTACTS

Andrey Shestakov, leading yacht broker of the sales department of Shestakov Yacht Sales Inc. Shestakov Yacht Sales Inc., the official representative of the Miami/Fort Lauderdale FL headquarters.

Contact details

Email: andrey@shestakovyachtsales.com

Web: shestakovyachtsales.com/en/

Telephones

USA: +1(954)274-4435

Office hours

Monday – Saturday: **9:00 - 21:00** EDT

Sunday: **closed**

Address



Harbour Towne Marina, 850 NE 3rd St,
STE 213, Dania, FL 33004