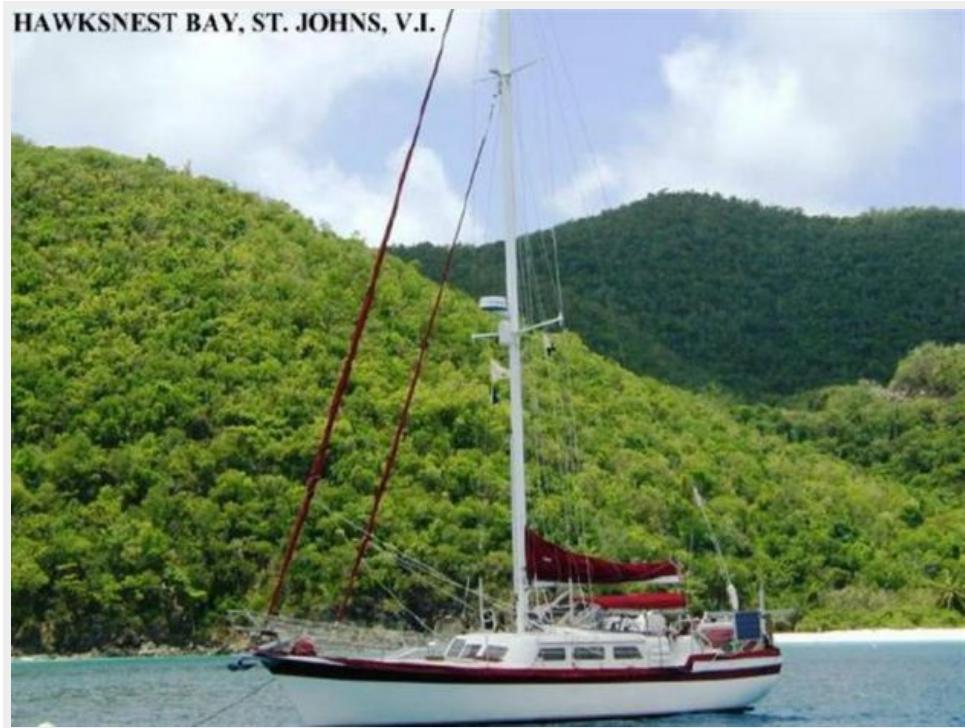


## BIRD OF PARADISE — WELLINGTON



**Builder:** WELLINGTON

**Year Built:** 1980

**Model:** Cruising Sailboat

**Price:** PRICE ON APPLICATION

**Location:** United States

**LOA:** 44' 0" (13.41m)

**Cruise Speed:** 6 Kts. (7 MPH)

**Max Speed:** 7 Kts. (8 MPH)

Our experienced yacht broker, Andrey Shestakov, will help you choose and buy a yacht that best suits your needs **Bird of Paradise — WELLINGTON** from our catalogue. Presently, at Shestakov Yacht Sales Inc., we have a wide variety of yachts available on our sale's list. We also work in close contact with all the big yacht manufacturers from all over the world.

If you would like to buy a yacht **Bird of Paradise — WELLINGTON** or would like help answering any questions concerning purchasing, selling or chartering a yacht, please call **+1(954)274-4435**

# TABLE OF CONTENTS

TABLE OF CONTENTS	2
SPECIFICATIONS	7
Overview	7
Basic Information	8
Dimensions	8
Speed, Capacities and Weight	8
Accommodations	8
Hull and Deck Information	8
Engine Information	8
DETAILED INFORMATION	9
Accommodations	9
Galley	9
Sails and Rigging	10
Hull and Deck	10
Electronics and Navigation	11
Mechanical and Electrical	12
Exclusions	12
Exclusions	12
Disclaimer	13
PHOTOS	14
Profile_Deck Layout	14
Profile_Aerial Stbd	14
Profile_Cockpit & Aft Deck	14
Profile_Stbd Aft Qtr	14
Profile_Stbd Mid-Ships	14
Profile_Stbd Cabin Windows	15
Profile_Stbd Bow	15
Anchors & Bow Pulpit	15

Sunbrella Covers on Exterior Brightwork	15
Profile_Port Side Deck	15
Cockpit_Looking Aft	15
Cockpit_ & Wood Wheel	16
Cockpit_Wheel Covered	16
Cockpit_Hatch Closed & Helm Seat	16
Cockpit Helm Seat & Teak Grates	16
Companionway_Acrylic Door	16
Cockpit Binnacle Compass & Helm Seat	16
Foredeck_SS Dorades	17
Cockpit Wood Wheel & Teak Grate	17
Cabintop & Sunbrella Covers	17
Foredeck & Sunbrella Covers	17
Foredeck_Un-Covered	17
Dorade Guards & Teak Trimmed Hatches	17
Foredeck & Windlass Covered	18
Swim Platform and SS Ladder	18
Lewmar 40 ST Primary Winches	18
Lewmar 48 ST Utility Cockpit Winch	18
Double Spreader Cutter Rig	18
Anderson 40 ST 2-Speed Winch	18
Caribe RIB & 15hp Yamaha	19
Custom Dinghy Davits & Motor Hoist	19
Caribe RIB Interior & Detail	19
SS Outboard Motor Hoist	19
Layout Drawings	20
Companionway Salon Entry	20
Salon_Forward	20
Salon_Galley Port Forward	20

Salon_Forward	20
Salon_Stbd Forward	20
Salon_Settee Stbd	21
Salon_Settee Stbd & Storage	21
Salon Passageway Aft	21
Salon_Looking Aft into Passageway	21
Nav Station	21
Salon_Stbd Aft	21
Salon_Port Aft	22
Salon_Dinette	22
Salon_Dinette & Storage	22
Salon_Dinette Convertible Table	22
Galley_U-Shaped	22
Galley_Twin SS Deep Sinks	22
Galley_SS 3-Burner Stove & Oven	23
Microwave	23
Galley_Forward	23
Galley_Fridge & Freezer_Stbd	23
Galley_Fridge Storage Racks	24
Galley_Freezer & Fridge Open	24
V-Berth Entrance_Door Open	24
Galley_SeaFrost Refrigeration Cold-Plates	24
V-Berth_Mini Settee	25
V-Berth_Generator Access Under Berth	25
V-Berth	25
V-Berth_Stbd	25
Guest Head_Forward	26
V-Berth_Port with Shelf	26
Guest Head_2018 Johnson Fresh-Water Toilet	26

Master SR_Aft Entry	26
Master SR_Mini Settee	27
Master SR_King Berth	27
Master SR_Port	27
Master SR_Stbd Bookshelves	27
Master SR Closet	27
Master SR_Forward View	27
Master SR Passageway_Looking Forward	28
Master Storage with Insulation	28
Master SR Passageway Storage	28
Master SR_Stbd Cabinetry	28
Master Vanity Medicine Cabinet	29
Master Sink & Vanity	29
Master Johnson Toilet_2018	29
Insulated Storage Cabinet	29
Master Head 3 Storage Cabinets	30
Master Head Door Open	30
Master Head_Port	30
Master Shower Entry	30
Master Shower Stall	31
Master Shower with Acrylic Skylight	31
Master Shower_Wood Trim Detail	31
Master Shower_Port Engine Room access	31
2018 Yanmar 110hp Diesel	32
Yanmar 110hp Diesel Port Access	32
Yanmar 110hp Diesel Starboard Access	32
Yanmar 110hp Digital Display	32
Kohler 5kW Diesel Generator_2460 hrs	32
Kohler 5kW Generator Under V-Berth	32

Kohler 5kW Generator	33
Furuno Radar Display-ON	33
Nav Station Electronics	33
ICOM M700PRO SSB	33
Standard Horizon Intrepid VHF with DSC	33
B&G Network Wind & Quad Displays	33
AC-DC Electrical Panel	34
Electrical Panel_AC & Hull #4 Plaque	34
Link 2000 12V Controller & AC Additional Breakers	34
Electrical 12V Breakers	34
Xantrex Freedom 30 Inverter-Charger	35
80W Kyocera Solar Panel & Pivot Mount	35
80W Solar Panel & Custom Motor Hoist	35
SeaFrost Refrigeration System	35
Propane Gas Controller	35
Water Filters under Galley Sink	35
Engine Room Automatic Fire Extinguisher	36
Custom SS Dinghy Davits & Deck Box	36
Fortress FX55 & Delta 45 Anchors	36
Simpson-Lawrence 12V Windlass	36
Hull Insulation	37
Anchor Locker_Divided and 2013 Chain	37
<b>CONTACTS</b>	<b>38</b>
Contact details	38
Telephones	38
Office hours	38
Address	38

---

# SPECIFICATIONS

---

## Overview

---

If you are looking for a spacious and seaworthy **UNSINKABLE Bluewater Keel/Centerboard Cruiser** that will take you safely and comfortably to offshore destinations and also capable of gunkholing in your favorite anchorages; then this semi-custom, one owner, 1980 Wellington Center Cockpit 44 Cutter is a must-see and a step above all of the other Wellington 44 models that were built. This hull was hand-laid of solid fiberglass and cured in the mold for 30 days so you won't find stress cracks or even spider cracks in the gelcoat after all these years of bluewater sailing. The current owners cruised onboard ***Bird of Paradise*** for over 10 years throughout the Caribbean and lightly ever since.

She was **re-powered in 2018 with a 110HP Yanmar 4JH11X1 Diesel Engine** and Yanmar Digital Instrument panel and currently has less than 20 hours. The Mack Genoa and Mainsails were recently removed, checked and reconditioned by a local sail loft, and the super-slick Tides Marine Strong track system on the Mainsail makes raising and lowering the mainsail effortless. Additional recent upgrades include both toilets and plumbing replaced, the interior satin-varnished teak cabinetry is in exceptional condition, all bilges and interiors of cabinets and storage areas are freshly painted and clean, and all opening windows and hatches have been re-sealed in the last few years to ensure a dry and leak-free interior. This 44 Wellington Cutter hull is lined with foam that provides excellent insulation as well as full flotation buoyancy that makes this an unsinkable and extremely dry and quiet yacht.

You will likely want to update some Navigation electronics although the Furuno Radar, ICOM SSB & Basics are in good working order, and re-commission the 450 GPD Watermaker, but otherwise she is ready to cruise with a 5kW Kohler Generator with low hours, a Xantrex Freedom 30 Inverter/Charger, Ice-Cold Air Conditioning system with reverse cycle heat, SeaFrost Refrigeration with a large separate Freezer, heavy duty SS custom dinghy davits, an AB RIB with Yamaha 15hp engine, a SS Outboard Engine Lift, multiple anchors with recently updated Anchor Chain, and custom Sunbrella covers on all the exterior varnished teak, hatches and windows, and serviceable Bimini with full enclosure panels, custom-made teak cockpit grate, and a custom skylight above the Master Shower that makes it bright with natural light. Additional sail inventory includes a Staysail on a Pro-Furler, high-cut furling jib, 140% Genoa, and a Spinnaker with spinnaker pole.

If you appreciate quality craftsmanship and classic styling, you owe it to yourself to schedule a personal inspection of ***Bird of Paradise***. If you like what you see in the photos, you won't be disappointed upon inspection. Replacement value is estimated to be in excess of \$1,000,000.

---

## Basic Information

---

**Category:** Cruising Sailboat

**Sub Category:** Cutter

**Model Year:** 1980

**Year Built:** 1980

**Country:** United States

---

## Dimensions

---

**LOA:** 44' 0" (13.41m)

---

## Speed, Capacities and Weight

---

**Cruise Speed:** 6 Kts. (7 MPH)

**Max Speed:** 7 Kts. (8 MPH)

---

## Accommodations

---

**Total Cabins:** 3

**Total Berths:** 4

**Total Heads:** 2

---

## Hull and Deck Information

---

**Hull Material:** Fiberglass

**Hull Configuration:** Centerboard

---

## Engine Information

---

**Engines:** 1

**Manufacturer:** Yanmar

**Model:** 4JH11X1

**Engine Type:** Inboard

**Fuel Type:** Diesel



---

# DETAILED INFORMATION

---

---

## Accommodations

---

***Bird of Paradise*** is an ideal home-away-from-home bluewater cruising platform with an incredibly spacious interior and deep, safe and comfortable center cockpit that can seat a crowd for entertaining yet very functional with all lines and controls led aft for short-handed sailing. This semi-custom 1980 Wellington 44 Center Cockpit Cutter has its companionway offset to starboard as you enter the spacious varnished teak trimmed cabinetry salon with 6'4" Headroom, a convertible L-shaped Dinette to Port, Nav Station to Starboard, a long and deep 6'4" Settee forward to starboard with storage under and outboard of the backrests.

Further Forward are top-loading SeaFrost Refrigerator and Freezer compartments with Formica countertops that add to the prep space for the well-equipped U-Shaped Galley opposite to Port. The Galley has two deep stainless steel Sinks, a 3 Burner Gimballed SS Propane Stove and Oven, Daewoo Microwave Oven, and plenty of drawers, cabinets and shelves to please any gourmet chef.

Forward of the Galley is a solid varnished teak door that leads to the Hallway of the V-Berth, with a mini-cushioned settee to starboard with storage above and below and opposite is the private Head with new Johnson fresh-water manual toilet, vanity and sink with plenty of storage in the outboard insulated cabinets and under and above the vanity. The V-Berth is forward and the 5kW Kohler Generator is located under the V-Berth with access under the mattress and via a cabinet door below.

Aft of the Dinette and Nav Station is a passageway with storage on the outboard side and access doors to the stand-up engine room with the 2018 Yanmar 110hp Diesel engine with less than 20 hours.

Moving aft is the Master Stateroom Suite with a full beam King-size berth raised up above and aft of a mini-cushioned settee with bookshelves and storage on each side, as well as a deep double-louvered door storage closet outboard of the settee to starboard. Opposite is a vanity & sink with mirrored medicine cabinet above, and a private Head behind a solid varnished teak door with a 2018 Johnson fresh-water manual toilet, and a large stall shower with a custom frosted acrylic skylight above, making it light and bright, yet private. The inboard lower section of the shower stall has a removable panel that provides access to the Port side of the engine room. The ceilings throughout this vessel are molded white panels fastened with varnished teak batts that provide an elegant arched effect.

---

## Galley

---

The Well-Equipped U-Shaped Galley of this semi-custom 1980 Wellington 44 Center Cockpit Cutter features:

- SeaFrost Holding Plate Refrigeration with top-loading Freezer and Refrigerator
- 450 GPD Watermaker (Pickled)
- 3-Burner SS Gimballed Propane Stove & Oven
- Trident Propane Gas Controller
- Daewoo Microwave Oven
- Dual SS Sinks with H/C Pressure Water & Manual water pump
- Dual Freshwater Filters
- Formica Countertops with varnished rails and generous drawers & cabinets

---

## Sails and Rigging

---

The 63' Bridge Clearance of the double spreader anodized aluminum Cutter-rigged mast of this 1984 Wellington 44 Custom Center Cockpit makes ***Bird of Paradise*** a great performer offshore in all conditions, as well as able to pass under all of the East Coast IntraCoastal fixed bridges. Her Keel/Centerboard underbody with skeg-hung rudder configuration tracks well and ensures excellent upwind performance with the board down, yet excellent gunkholing for bay and inland cruising with the board up. Other features included:

- Mack Sails Mainsail with Stack-pack and Lazy Jacks
- Tides Marine Strong Track & SS Tides Slides on Mainsail
- SS Solid Rod Boom Vang
- Mack Sails RF 135% Genoa
- Mack Sails RF 100% Genoa
- Mack Sails RF Staysail
- Spinnaker with Spinnaker Pole and all gear with Vertical Mast Mounts
- Aluminum Double-Spreader Masthead Rigged Mast & Boom
- Inner Staysail Stay with RF system
- All lines and halyards led aft to Cockpit
- 3 Barlow #16 Winches on Mast
- 1 Andersen #40 ST 2-Speed Halyard Winch
- 1 Barlow #16 Mainsheet Winch
- 2 Barlow #16 Staysail Sheet Winches
- 2 Primary Lewmar #42 ST 2-Speed Winches
- 3 Sheet Stoppers
- Primary Lewmar #48 ST 2-Speed Genoa Winch Aft of Cockpit
- Secondary Lewmar #40 ST 2-Speed Staysail Sheet Winch

---

## Hull and Deck

---

***Bird of Paradise*** is a unique Center Cockpit 44 Wellington Keel-Centerboard Cutter because she is one of the few that was totally finished and customized in the Wellington factory. Some of her many unique features include:

- Hand-laid up Solid Fiberglass Hull, Cured in the Mold for 30 days.
- Fully-lined with Flotation Insulation making it UNSINKABLE, Dry & quiet.
- Keel/Centerboard integrated Keel with a Cut-a-way Skeg-hung Rudder
- Deck-Saloon Cabin design with forward-facing Windows
- Center Cockpit with Cushions and teak-trimmed Storage behind backrests
- 4 Teak-Framed Acrylic Opening Deck Hatches with Sunbrella Covers & Screens
- 2 SS Dorades with SS Rail Guards
- 2 SS Mast Guards
- SS Stanchions and SS Double Lifelines & 2 Boarding Gates
- Wooden & SS Steering Wheel
- Dual Anchor Rollers & Pulpit
- Anchor/Foredeck Washdown
- 44# Delta Plow Anchor & 100' 3/8" Galvanized Chain (2013)
- Fortress FX-55 Anchor & 25' 3/8" Galvanized Chain & 100' Nylon Rode (2013)
- Simpson Lawrence 12V Dual Gypsy Windlass with Deck mounted "Up" switch
- Divided Anchor Locker with access from V-Berth
- Cockpit Sunbrella Bimini & Dodger with Full Enclosure Zippered Vinyl Panels
- Full Sunbrella Covers for all Varnished Exterior Teak, Hatches & Windows
- Teak Cockpit Floor Grate
- Cockpit Cushions
- Custom Removable Helm Seat
- Custom SS Heavy Duty Dinghy Davits
- Garhauer SS Outboard Motor Davit
- Folding Transom-mounted Swim Platform
- Cockpit Shower

## Electronics and Navigation

---

Electronics and Navigation systems on this 1980 Wellington 44 Cutter are older models but most are in good working order. The onboard systems include:

- Furuno 24 mile Radar
- ICOM SSB IC-M700PRO
- Standard-Horizon Intrepid VHF with DSC
- B&G Network Displays with Nav Station Repeaters
- 2 B&G Quads with Digital Speed, Depth & Log at Nav Station & Cockpit
- B&G Digital Wind
- B&G AutoPilot (inoperable)
- ACR EPIRB RapidFix 406 (expired 2011)
- Ritchie SS Binnacle Compass

---

## Mechanical and Electrical

---

This semi-custom 1980 Wellington 44 Center-Cockpit Keel-Centerboard Cutter is well-equipped for long periods of bluewater cruising. Re-Powered in 2018, the mechanical and electrical systems on Bird of Paradise have been upgraded and well-maintained so she is in cruise-ready condition.

### Mechanical Systems Features include:

- 2018 Yanmar 110hp 4JH11X1 Diesel Engine with only 20 hours
- 2018 Yanmar Digital Engine Display
- Heavy-Duty Chain-driven Steering System
- 450 GPD Watermaker (pickled)
- 12 Gal. Engine & 110V Hot Water Heater
- Pressure Freshwater System with Accumulator Tank
- Cockpit Shower & Deck & Anchor Washdown Systems
- SeaFrost 110V Refrigeration System
- Automatic Engine Room Fire Suppression System

### Electrical Systems Features Include:

- 5kW Kohler Diesel Generator with 2,460 hours
- 110V & 12V Circuit Breakers with Voltage & Amp Gauges
- Xantrex Freedom 30 Inverter/Charger
- Link 2000 Heart Digital Battery Controller
- 80W Kyocera Solar Panel on Pivot Rail Mount & Regulator
- 12V Interior and Exterior/Navigation Lighting
- CruiseAir Reverse Cycle Air Conditioning Systems with remote Evaporators
- 4 @ 12V Batteries

---

## Exclusions

---

Excluded are personal and other items found onboard during inspection or shown in photos on Central Listing Agent's Website that are not specifically described in text of the Listing Specifications. However, all safety items that are onboard during inspections that are required by the USCG, as well as a minimum number of dock lines, fenders, and boat hooks to safely operate and dock the vessel are included, whether identified in the Web Description or not.

---

## Exclusions

---

Owner's personal belongings.

---

## Disclaimer

---

The Company offers the details of this vessel or yacht in good faith but cannot guarantee or warrant the accuracy of this information nor warrant the condition of the vessel. A buyer should instruct his representatives, agents, or his surveyors, to investigate such details as the buyer desires validated. This vessel or yacht is offered subject to prior sale, price change, or withdrawal without notice.

# PHOTOS

**Profile\_Aerial Stbd**



**Profile\_Deck Layout**



**Profile\_Cockpit & Aft Deck**



**Profile\_Stbd Aft Qtr**



**Profile\_Stbd Mid-Ships**





**Profile\_Stbd Cabin Windows**



**Profile\_Stbd Bow**



**Anchors & Bow Pulpit**



**Sunbrella Covers on Exterior Brightwork**



**Profile\_Port Side Deck**



**Cockpit\_Looking Aft**



**Cockpit\_ & Wood Wheel**



**Cockpit\_Wheel Covered**



**Cockpit\_Hatch Closed & Helm Seat**



**Cockpit Helm Seat & Teak Grates**



**Companionway\_Acrylic Door**

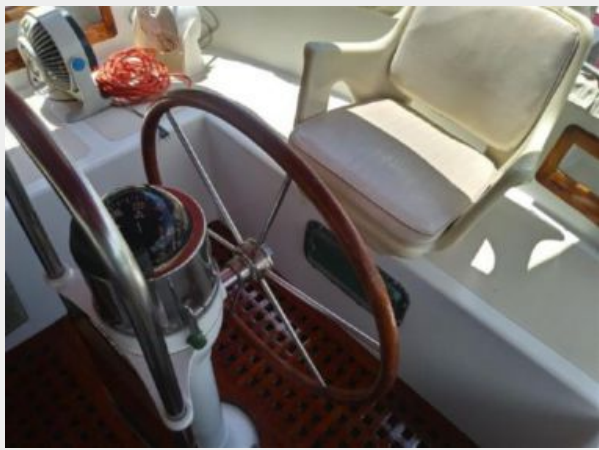


**Cockpit Binnacle Compass & Helm Seat**





**Cockpit Wood Wheel & Teak Grate**



**Foredeck\_SS Dorades**



**Cabintop & Sunbrella Covers**



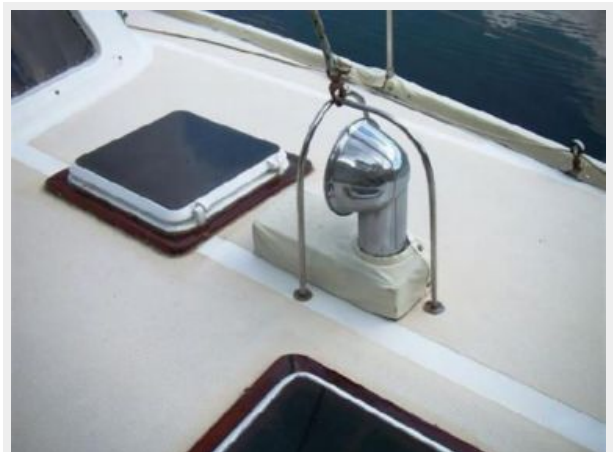
**Foredeck & Sunbrella Covers**



**Foredeck\_Un-Covered**



**Dorade Guards & Teak Trimmed Hatches**



### Foredeck & Windlass Covered



### Swim Platform and SS Ladder



### Lewmar 40 ST Primary Winches



### Lewmar 48 ST Utility Cockpit Winch



### Anderson 40 ST 2-Speed Winch



### Double Spreader Cutter Rig





### Caribe RIB & 15hp Yamaha



### Custom Dinghy Davits & Motor Hoist



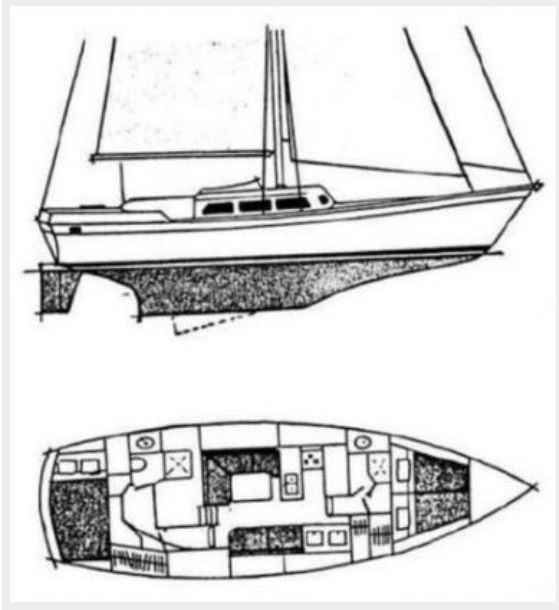
### Caribe RIB Interior & Detail



### SS Outboard Motor Hoist



### Layout Drawings



### Companionway Salon Entry



### Salon\_Foward



### Salon\_Galley Port Forward



### Salon\_Foward



### Salon\_Stbd Forward





Salon\_Settee Stbd



Salon\_Settee Stbd & Storage



Salon Passageway Aft



Salon\_Looking Aft into Passageway



Nav Station



Salon\_Stbd Aft



Salon\_Port Aft



Salon\_Dinette



Salon\_Dinette & Storage



Salon\_Dinette Convertible Table



Galley\_U-Shaped



Galley\_Twin SS Deep Sinks





### Galley\_SS 3-Burner Stove & Oven



### Microwave



### Galley\_Forward



### Galley\_Fridge & Freezer\_Stbd



**Galley\_Freezer & Fridge Open**



**Galley\_Fridge Storage Racks**



**Galley\_SeaFrost Refrigeration Cold-Plates**

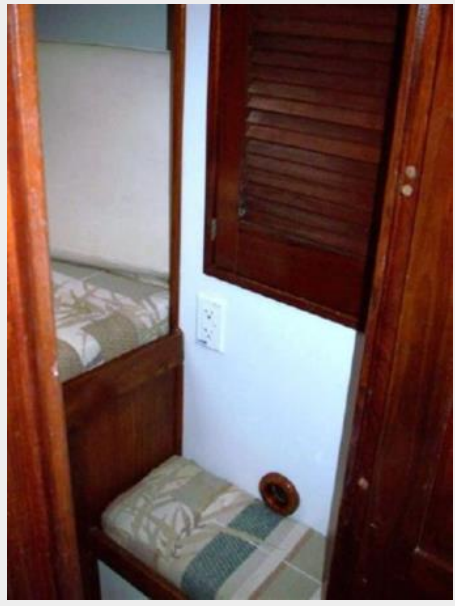


**V-Berth Entrance\_Door Open**





**V-Berth\_Mini Settee**



**V-Berth\_Generator Access Under Berth**



**V-Berth**



**V-Berth\_Stbd**



V-Berth\_Port with Shelf



Guest Head\_Forward



Guest Head\_2018 Johnson Fresh-Water Toilet



Master SR\_Aft Entry



**Master SR\_Mini Settee**



**Master SR\_King Berth**



**Master SR\_Port**



**Master SR\_Stbd Bookshelves**



**Master SR Closet**



**Master SR\_Forward View**





### Master SR Passageway\_Looking Forward



### Master Storage with Insulation



### Master SR Passageway Storage



### Master SR\_Stbd Cabinetry



### Master Vanity Medicine Cabinet

### Master Sink & Vanity



### Master Johnson Toilet\_2018



### Insulated Storage Cabinet



**Master Head 3 Storage Cabinets**



**Master Head Door Open**



**Master Head\_Port**



**Master Shower Entry**





**Master Shower Stall**



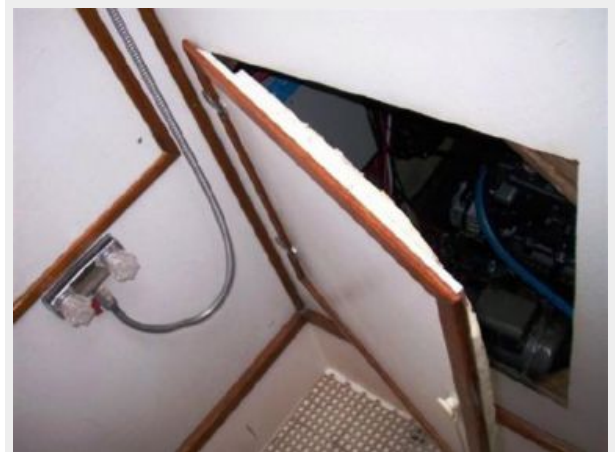
**Master Shower with Acrylic Skylight**



**Master Shower\_Wood Trim Detail**



**Master Shower\_Port Engine Room access**



**2018 Yanmar 110hp Diesel**



**Yanmar 110hp Diesel Port Access**



**Yanmar 110hp Diesel Starboard Access**



**Yanmar 110hp Digital Display**



**Kohler 5kW Diesel Generator\_2460 hrs**



**Kohler 5kW Generator Under V-Berth**





**Kohler 5kW Generator**



**Furuno Radar Display-ON**



**Nav Station Electronics**



**ICOM M700PRO SSB**



**Standard Horizon Intrepid VHF with DSC**



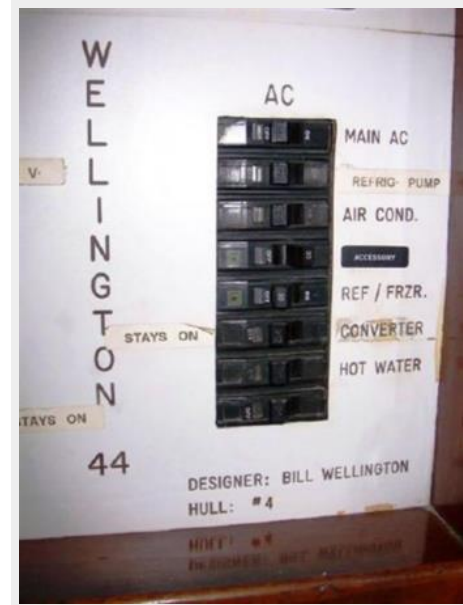
**B&G Network Wind & Quad Displays**



AC-DC Electrical Panel



Electrical Panel\_AC & Hull #4 Plaque



Electrical 12V Breakers



Link 2000 12V Controller & AC Additional Breakers





**Xantrex Freedom 30 Inverter-Charger**



**80W Kyocera Solar Panel & Pivot Mount**



**80W Solar Panel & Custom Motor Hoist**



**SeaFrost Refrigeration System**



**Propane Gas Controller**



**Water Filters under Galley Sink**



### Engine Room Automatic Fire Extinguisher



### Custom SS Dinghy Davits & Deck Box



### Fortress FX55 & Delta 45 Anchors



### Simpson-Lawrence 12V Windlass



### Anchor Locker\_Divided and 2013 Chain



### Hull Insulation





# CONTACTS

---

Andrey Shestakov, leading yacht broker of the sales department of Shestakov Yacht Sales Inc. Shestakov Yacht Sales Inc., the official representative of the Miami/Fort Lauderdale FL headquarters.

## Contact details

---

Email: [andrey@shestakovyachtsales.com](mailto:andrey@shestakovyachtsales.com)

Web: [shestakovyachtsales.com/en/](http://shestakovyachtsales.com/en/)

## Telephones

---

USA: +1(954)274-4435

## Office hours

---

Monday – Saturday: **9:00 - 21:00** EDT

Sunday: **closed**

## Address

---



Harbour Towne Marina, 850 NE 3rd St,  
STE 213, Dania, FL 33004