

PHILOS — GULFSTAR



Builder: GULFSTAR

Year Built: 1987

Model: Cruiser

Price: PRICE ON APPLICATION

Location: United States

LOA: 49' 0" (14.94m)

Beam: 15' 1" (4.60m)

Min Draft: 4' 5" (1.35m)

Max Draft: 4' 5" (1.35m)

Our experienced yacht broker, Andrey Shestakov, will help you choose and buy a yacht that best suits your needs **Philos — GULFSTAR** from our catalogue. Presently, at Shestakov Yacht Sales Inc., we have a wide variety of yachts available on our sale's list. We also work in close contact with all the big yacht manufacturers from all over the world.

If you would like to buy a yacht **Philos — GULFSTAR** or would like help answering any questions concerning purchasing, selling or chartering a yacht, please call **+1(954)274-4435**

TABLE OF CONTENTS

TABLE OF CONTENTS	2
SPECIFICATIONS	4
Overview	4
Basic Information	4
Dimensions	4
Speed, Capacities and Weight	4
Accommodations	4
Hull and Deck Information	5
Engine Information	5
DETAILED INFORMATION	6
Description	6
Walkthrough	6
Accommodations	6
Salon	6
Galley	6
Dining	7
Master Stateroom	7
Guest Stateroom 1	7
Guest Stateroom 2	7
Laundry	7
Sundeck	7
Fly Bridge	7
Aft Deck	8
Audio & Visual Equipment	8
Electronics	8
Electrical system	8
Mechanical	8
Deck Equipment	8

Safety & Fire Protection	9
Exclusions	9
Exclusions	9
Disclaimer	9
PHOTOS	10
CONTACTS	20
Contact details	20
Telephones	20
Office hours	20
Address	20

SPECIFICATIONS

Overview

Philos is a 1987 49' Gulfstar Motoryacht. She offers a three stateroom/3 head and 2 salon layout, aftdeck with a hardtop, Eisenglass enclosure and ceiling fan, updated wood and vinyl soles throughout, 2500 watt inverter, 20 kW generator, Side-Power bowthruster and Swann security camera system. Her layout and condition make her a fantastic liveaboard and she is Great Loop capable.

Basic Information

Category: Cruiser

Model Year: 1987

Year Built: 1987

Country: United States

Dimensions

LOA: 49' 0" (14.94m)

Beam: 15' 1" (4.60m)

Min Draft: 4' 5" (1.35m)

Max Draft: 4' 5" (1.35m)

Clearance: 17' 3" (5.26m)

Speed, Capacities and Weight

Displacement: 42000 Pounds

Water Capacity: 370 Gallons

Holding Tank: 40 Gallons

Fuel Capacity: 675 Gallons

Accommodations

Total Cabins: 3

Total Berths: 3

Total Heads: 3

Hull and Deck Information

Hull Material: Fiberglass

Engine Information

Engines: 2

Manufacturer: Detroit Diesel

Model: 6v92TA

Engine Type: Inboard

Fuel Type: Diesel

DETAILED INFORMATION

Description

Philos is a 1987 49' Gulfstar Motoryacht. She offers a three stateroom/3 head and 2 salon layout, aftdeck with a hardtop, Eisenglass enclosure and ceiling fan, updated wood and vinyl soles throughout, 2500 watt inverter, 20 kW generator, Side-Power bowthruster and Swann security camera system. Her layout and condition make her a fantastic liveaboard and she is Great Loop capable.

Walkthrough

From the Eisenglass enclosed aftdeck, you walk forward into the enclosed sundeck and find a sofa and coffee table to starboard, lounge chair port aft, wing door on each side to each side deck, a door and steps up to the flybridge or a door with steps down to the salon. Once inside the salon, you will find the galley to port, wrap-around settee with antique table to port, companionway to the master stateroom and port guest stateroom/office aft and the companionway, laundry room forward to the guest stateroom and engine room access. The headroom on the aftdeck is 6'7", 6'3" in the upper deck, 6'10" on the flybridge, 6'5" in the galley, 6'4" in the forward guest stateroom, 6'4" in the master stateroom and port guest stateroom/office and 5'5" in the engine room. The master stateroom berth is 6'6" long, the port guest stateroom berth/desk is 6'3" long and the forward guest stateroom berth is 6'8" long.

Accommodations

Philos offers a full beam master stateroom aft with a queen size berth and ensuite head with enclosed shower, a guest stateroom/office to port with a single berth that has been converted to a desk and an ensuite head with shower stall with curtain and a guest stateroom forward with an island queen size berth and an ensuite head with enclosed shower.

Salon

The salon offers a wrap-around settee and antique table with storage to port, opening side windows with screens, teak parquet sole and a door and steps to the enclosed upper deck area.

Galley

The galley is to port in the salon. - Tappan microwave oven - 4-burner electric cooktop and oven - Hotpoint refrigerator/freezer with icemaker - Storage cabinets and drawers - Large stainless steel sink - Magma stainless steel BBQ grill on the foredeck - Norcold refrigerator on the flybridge - Teak and Holly sole

Dining

Dining space is available at the salon table.

Master Stateroom

The full beam master stateroom aft offers a centerline queen size berth, hanging lockers, storage drawers and cabinets, nightstand, reading light, mirrored headboard, 2 portlights, side windows, wrap-around seating with storage starboard aft and ensuite head with enclosed shower with overhead hatch.

Guest Stateroom 1

The port guest stateroom has been converted into an office, but it could also be converted back to a stateroom only. It includes storage cabinets, mirror, reading lights, 2 portlights, vinyl Oak sole and ensuite head with curtained shower stall.

Guest Stateroom 2

The guest stateroom forward offers an island queen size berth, vinyl teak sole, reading lights, shelves, storage drawers and cabinets, hanging locker, 2 portlights with screens, overhead hatch, anchor chain locker access and an ensuite head with enclosed shower.

Laundry

- Whirlpool washer and dryer

Sundeck

The enclosed sundeck offers a sofa and coffee table to starboard, lounge chair port aft, storage, Teak and glass wing doors, opening side windows with shades, vinyl Oak sole, sliding glass door aft, door to the flybridge and door to the salon.

Fly Bridge

The flybridge offers a bimini, Eisenglass enclosure, non-skid deck, fold-down wood chart table to starboard, storage cabinets, air conditioning/heating system supply, sunpad, L-shaped seating with storage, Garelick helm seat and teak & glass door to the sundeck.

Aft Deck

The aftdeck offers a hardtop, Eisenglass enclosure with screens and curtains, non-skid deck, transom gate, ceiling fan, teak deck chairs and folding teak table and rod storage.

Audio & Visual Equipment

- Samsung flat screen TV in the sundeck - Samsung Blu-Ray player in the sundeck - Fusion MS-P600 stereo in the sundeck - Sony CDP-CE500 5 disc CD changer in the sundeck - Insignia flat screen TV in the master stateroom - Dynex flat screen TV in the forward guest stateroom - Dynex DX-DVD2 DVD player in the forward guest stateroom - Bose speakers - Aquos flat screen TV on the flybridge

Electronics

- Garmin HD Radar (2011) - Garmin GPSMap 4212 multi-function display (2011) - Navman 7100 VHF - Garmin GHS10 VHF on the flybridge and in the salon - Robertson AP200 DL autopilot - Ritchie Powerdamp magnetic compass - Cobra 29 LTD classic CB radio - Chelsea Shipstrike clock - Swann engine room and aft cameras

Electrical system

- Onan 20.0 OMDL4-3CR 20 kW generator with approximately 3,822 hours - Heart Interface 2500 watt inverter - Heart Interface Link 2000 battery monitor system - Mastervolt 12/70-3 battery charger (2012) - 2 X 12vdc outlets on the flybridge - 110vac outlet on the flybridge - 50 amp shore cord

Mechanical

- Twin Detroit Diesel 6v92TA 540 hp main engines with approximately 1,175 SMOH - Morse engine controls - Glendinning synchronizer - Dripless shaft seals (2011) - Racor 1000MA fuel filter for each main engine - Racor 500FG fuel filter for the generator - Bennett trim tabs - Side-Power bowthruster (2011) - Cruisair reverse cycle air conditioning/heating system (3 units) - Rheem 19.9 gallon water heater - Ardox Corp tank gauge - Groco GM-50 holding tank level gauge - Electric heads - Engine room washdown - Shafts replaced in 2011

Deck Equipment

- Ideal anchor windlass with foot controls - CQR 45 lb anchor - Danforth anchor - Pulpit - Washdown - Foredeck lockers - Deck box on the foredeck - Non-skid deck - Stainless steel rails with lifeline forward and teak cap rails aft - Stainless steel deck hardware - Boarding gate each

side - Window shades - Marquipt Tide Ride gangway - Stainless steel & teak swimplatform ladder - Stainless steel & teak swim ladder - Rod holder - Tender chocks - Tender davit

Safety & Fire Protection

- Fireboy 200MA Halon 1301 engine room fire suppression system - Fireboy remote engine emergency shutdown system - Nighthawk smoke and carbon monoxide detectors - Rayline searchlight - Swann security camera system - Whale manual bilge pump - Loudspeaker

Exclusions

- Sellers' personal belongings - Artwork

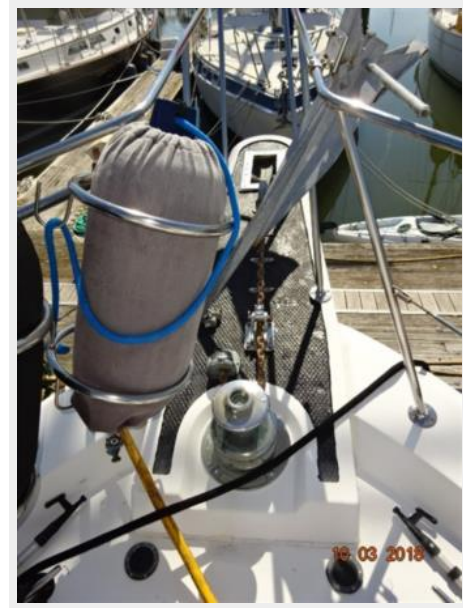
Exclusions

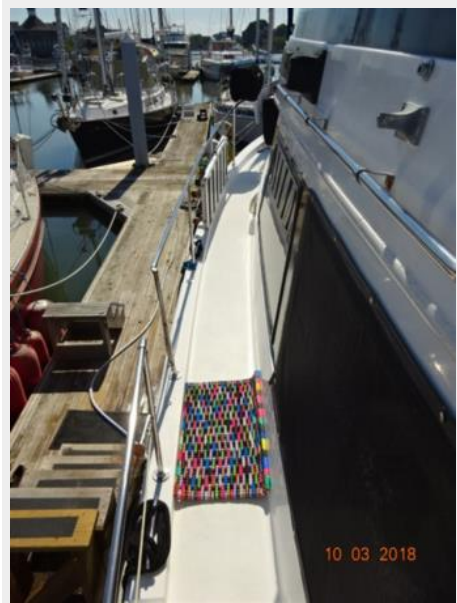
Owner's personal belongings.

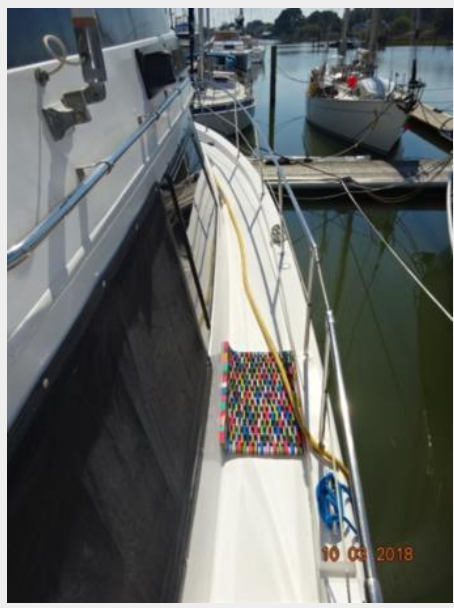
Disclaimer

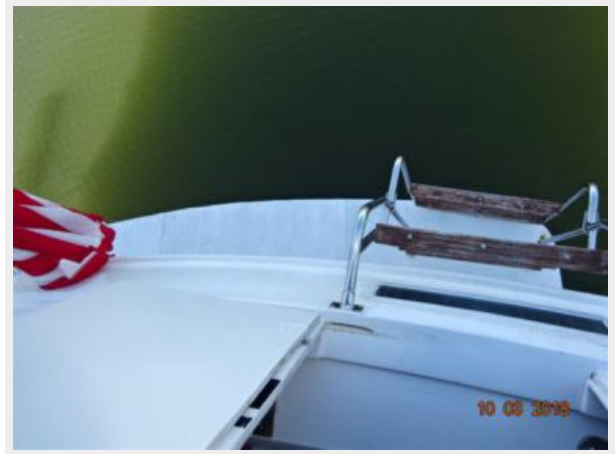
The Company offers the details of this vessel or yacht in good faith but cannot guarantee or warrant the accuracy of this information nor warrant the condition of the vessel. A buyer should instruct his representatives, agents, or his surveyors, to investigate such details as the buyer desires validated. This vessel or yacht is offered subject to prior sale, price change, or withdrawal without notice.

PHOTOS



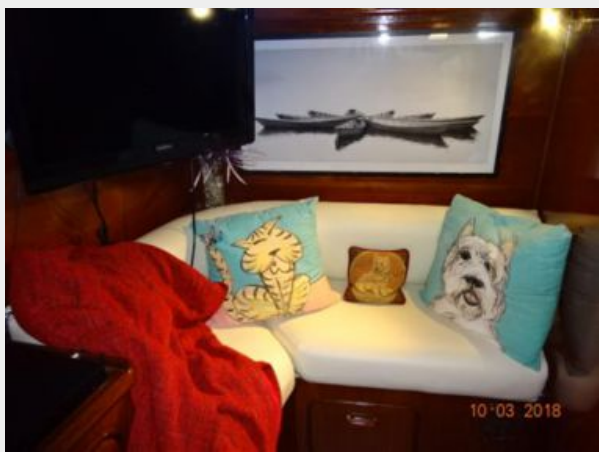






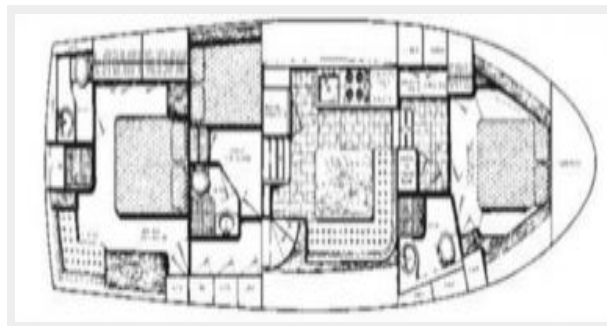












CONTACTS

Andrey Shestakov, leading yacht broker of the sales department of Shestakov Yacht Sales Inc. Shestakov Yacht Sales Inc., the official representative of the Miami/Fort Lauderdale FL headquarters.

Contact details

Email: andrey@shestakovyachtsales.com

Web: shestakovyachtsales.com/en/

Telephones

USA: +1(954)274-4435

Office hours

Monday – Saturday: **9:00 - 21:00** EDT

Sunday: **closed**

Address



Harbour Towne Marina, 850 NE 3rd St,
STE 213, Dania, FL 33004