

PHILOS — GULFSTAR



Судостроитель: GULFSTAR

Год постройки: 1987

Модель: Крейсер

Цена: ЦЕНА ЯХТЫ ПО ЗАПРОСУ

Местонахождение: United States

Длина общая: 49' 0" (14.94m)

Ширина: 15' 1" (4.60m)

Мин. осадка: 4' 5" (1.35m)

Макс. осадка: 4' 5" (1.35m)

Купить **Philos — GULFSTAR** а также выбрать подходящую вам яхту из нашего **каталога яхт** вам поможет опытный яхтенный брокер Андрей Шестаков. На сегодняшний день компания **Shestakov Yacht Sales Inc.** имеет большое количество яхт в **собственном списке продаж**, а также тесно сотрудничает со всеми крупными яхтенными производителями по всему миру.

Для того чтобы купить яхту **Philos — GULFSTAR** а также проконсультироваться по любому вопросу связанному с покупкой, продажей, чартером яхт позвоните по телефону **+7(918)465-66-44**.

ОГЛАВЛЕНИЕ

ОГЛАВЛЕНИЕ	2
ХАРАКТЕРИСТИКИ	4
Обзор	4
Основная информация	4
Размеры	4
Скорость, вместимость и масса	4
Размещение	4
Корпус и палуба	5
Информация о двигателе	5
ПОДРОБНОЕ ОПИСАНИЕ	6
Description	6
Walkthrough	6
Accommodations	6
Salon	6
Galley	6
Dining	7
Master Stateroom	7
Guest Stateroom 1	7
Guest Stateroom 2	7
Laundry	7
Sundeck	7
Fly Bridge	7
Aft Deck	8
Audio & Visual Equipment	8
Electronics	8
Electrical system	8
Mechanical	8
Deck Equipment	8

Safety & Fire Protection	9
Exclusions	9
Исключения	9
Отказ от ответственности	9
ФОТОГРАФИИ	10
КОНТАКТЫ	20
Контактная информация	20
Телефоны	20
Время работы	20
Адрес	20

ХАРАКТЕРИСТИКИ

Обзор

Philos is a 1987 49' Gulfstar Motoryacht. She offers a three stateroom/3 head and 2 salon layout, aftdeck with a hardtop, Eisenglass enclosure and ceiling fan, updated wood and vinyl soles throughout, 2500 watt inverter, 20 kW generator, Side-Power bowthruster and Swann security camera system. Her layout and condition make her a fantastic liveaboard and she is Great Loop capable.

Основная информация

Тип судна: Крейсер

Модельный год: 1987

Год постройки: 1987

Страна: United States

Размеры

Длина общая: 49' 0" (14.94m)

Ширина: 15' 1" (4.60m)

Мин. осадка: 4' 5" (1.35m)

Макс. осадка: 4' 5" (1.35m)

Трапы: 17' 3" (5.26m)

Скорость, вместимость и масса

Водоизмещение: 42000 Pounds

Вместимость воды: 370 Gallons

Вместимость сточного бака: 40 Gallons

Объем топливного бака: 675 Gallons

Размещение

Всего кают: 3

Всего коек: 3

Всего ком. состава: 3

Корпус и палуба

Материал корпуса: Fiberglass

Информация о двигателе

Двигатели: 2

Производитель: Detroit Diesel

Модель: 6v92TA

Тип двигателя: Inboard

Тип топлива: Diesel

ПОДРОБНОЕ ОПИСАНИЕ

Description

Philos is a 1987 49' Gulfstar Motoryacht. She offers a three stateroom/3 head and 2 salon layout, aftdeck with a hardtop, Eisenglass enclosure and ceiling fan, updated wood and vinyl soles throughout, 2500 watt inverter, 20 kW generator, Side-Power bowthruster and Swann security camera system. Her layout and condition make her a fantastic liveaboard and she is Great Loop capable.

Walkthrough

From the Eisenglass enclosed aftdeck, you walk forward into the enclosed sundeck and find a sofa and coffee table to starboard, lounge chair port aft, wing door on each side to each side deck, a door and steps up to the flybridge or a door with steps down to the salon. Once inside the salon, you will find the galley to port, wrap-around settee with antique table to port, companionway to the master stateroom and port guest stateroom/office aft and the companionway, laundry room forward to the guest stateroom and engine room access. The headroom on the aftdeck is 6'7", 6'3" in the upper deck, 6'10" on the flybridge, 6'5" in the galley, 6'4" in the forward guest stateroom, 6'4" in the master stateroom and port guest stateroom/office and 5'5" in the engine room. The master stateroom berth is 6'6" long, the port guest stateroom berth/desk is 6'3" long and the forward guest stateroom berth is 6'8" long.

Accommodations

Philos offers a full beam master stateroom aft with a queen size berth and ensuite head with enclosed shower, a guest stateroom/office to port with a single berth that has been converted to a desk and an ensuite head with shower stall with curtain and a guest stateroom forward with an island queen size berth and an ensuite head with enclosed shower.

Salon

The salon offers a wrap-around settee and antique table with storage to port, opening side windows with screens, teak parquet sole and a door and steps to the enclosed upper deck area.

Galley

The galley is to port in the salon. - Tappan microwave oven - 4-burner electric cooktop and oven - Hotpoint refrigerator/freezer with icemaker - Storage cabinets and drawers - Large stainless steel sink - Magma stainless steel BBQ grill on the foredeck - Norcold refrigerator on the flybridge - Teak and Holly sole

Dining

Dining space is available at the salon table.

Master Stateroom

The full beam master stateroom aft offers a centerline queen size berth, hanging lockers, storage drawers and cabinets, nightstand, reading light, mirrored headboard, 2 portlights, side windows, wrap-around seating with storage starboard aft and ensuite head with enclosed shower with overhead hatch.

Guest Stateroom 1

The port guest stateroom has been converted into an office, but it could also be converted back to a stateroom only. It includes storage cabinets, mirror, reading lights, 2 portlights, vinyl Oak sole and ensuite head with curtained shower stall.

Guest Stateroom 2

The guest stateroom forward offers an island queen size berth, vinyl teak sole, reading lights, shelves, storage drawers and cabinets, hanging locker, 2 portlights with screens, overhead hatch, anchor chain locker access and an ensuite head with enclosed shower.

Laundry

- Whirlpool washer and dryer

Sundeck

The enclosed sundeck offers a sofa and coffee table to starboard, lounge chair port aft, storage, Teak and glass wing doors, opening side windows with shades, vinyl Oak sole, sliding glass door aft, door to the flybridge and door to the salon.

Fly Bridge

The flybridge offers a bimini, Eisenglass enclosure, non-skid deck, fold-down wood chart table to starboard, storage cabinets, air conditioning/heating system supply, sunpad, L-shaped seating with storage, Garelick helm seat and teak & glass door to the sundeck.

Aft Deck

The aftdeck offers a hardtop, Eisenglass enclosure with screens and curtains, non-skid deck, transom gate, ceiling fan, teak deck chairs and folding teak table and rod storage.

Audio & Visual Equipment

- Samsung flat screen TV in the sundeck - Samsung Blu-Ray player in the sundeck - Fusion MS-P600 stereo in the sundeck - Sony CDP-CE500 5 disc CD changer in the sundeck - Insignia flat screen TV in the master stateroom - Dynex flat screen TV in the forward guest stateroom - Dynex DX-DVD2 DVD player in the forward guest stateroom - Bose speakers - Aquos flat screen TV on the flybridge

Electronics

- Garmin HD Radar (2011) - Garmin GPSMap 4212 multi-function display (2011) - Navman 7100 VHF - Garmin GHS10 VHF on the flybridge and in the salon - Robertson AP200 DL autopilot - Ritchie Powerdamp magnetic compass - Cobra 29 LTD classic CB radio - Chelsea Shipstrike clock - Swann engine room and aft cameras

Electrical system

- Onan 20.0 OMDL4-3CR 20 kW generator with approximately 3,822 hours - Heart Interface 2500 watt inverter - Heart Interface Link 2000 battery monitor system - Mastervolt 12/70-3 battery charger (2012) - 2 X 12vdc outlets on the flybridge - 110vac outlet on the flybridge - 50 amp shore cord

Mechanical

- Twin Detroit Diesel 6v92TA 540 hp main engines with approximately 1,175 SMOH - Morse engine controls - Glendinning synchronizer - Dripless shaft seals (2011) - Racor 1000MA fuel filter for each main engine - Racor 500FG fuel filter for the generator - Bennett trim tabs - Side-Power bowthruster (2011) - Cruisair reverse cycle air conditioning/heating system (3 units) - Rheem 19.9 gallon water heater - Ardox Corp tank gauge - Groco GM-50 holding tank level gauge - Electric heads - Engine room washdown - Shafts replaced in 2011

Deck Equipment

- Ideal anchor windlass with foot controls - CQR 45 lb anchor - Danforth anchor - Pulpit - Washdown - Foredeck lockers - Deck box on the foredeck - Non-skid deck - Stainless steel rails with lifeline forward and teak cap rails aft - Stainless steel deck hardware - Boarding gate each

side - Window shades - Marquipt Tide Ride gangway - Stainless steel & teak swimplatform ladder - Stainless steel & teak swim ladder - Rod holder - Tender chocks - Tender davit

Safety & Fire Protection

- Fireboy 200MA Halon 1301 engine room fire suppression system - Fireboy remote engine emergency shutdown system - Nighthawk smoke and carbon monoxide detectors - Rayline searchlight - Swann security camera system - Whale manual bilge pump - Loudspeaker

Exclusions

- Sellers' personal belongings - Artwork

Исключения

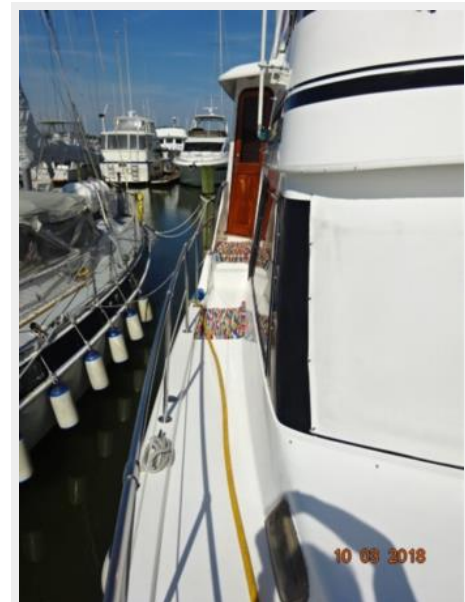
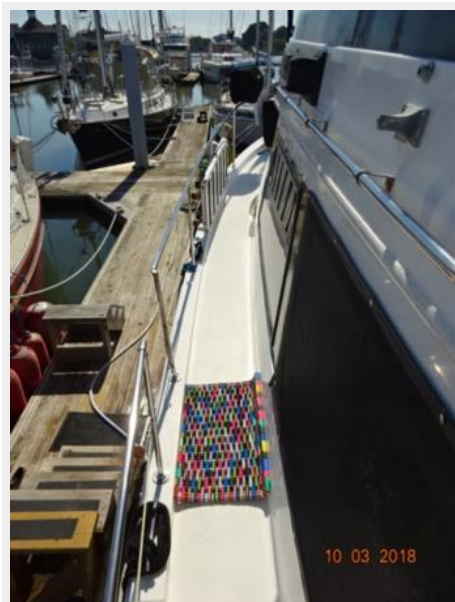
При продаже яхты исключаются личные вещи владельца.

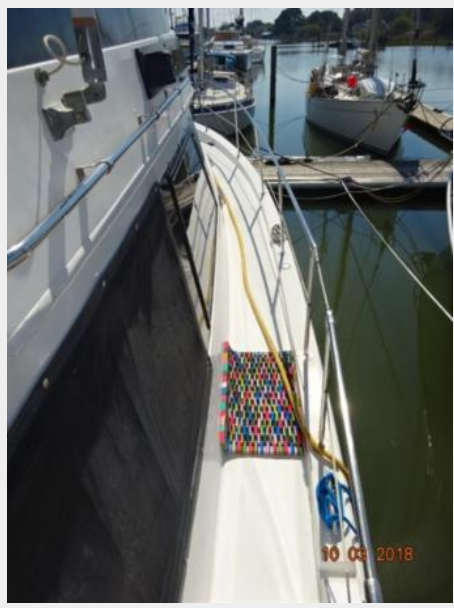
Отказ от ответственности

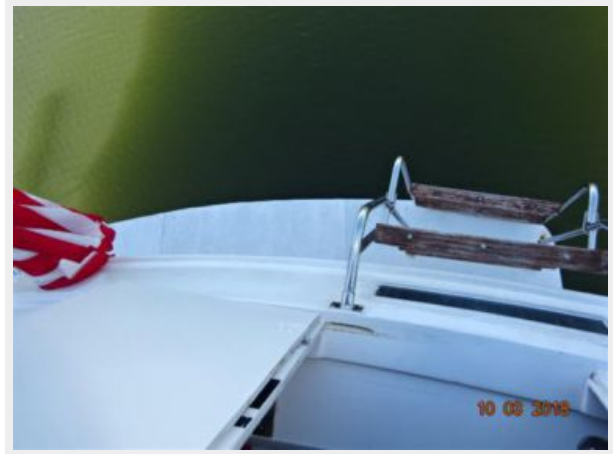
Компания предоставляет описание судна или яхты добросовестно, но не может гарантировать точность этой информации, а также не ручается за техническое состояние. Покупатель должен проинструктировать своих агентов или оценщиков исследовать представленную информацию более подробно, по собственному желанию. Продажа судна или яхты, изменение цены или снятие с продажи будет происходить без предварительного уведомления.

ФОТОГРАФИИ



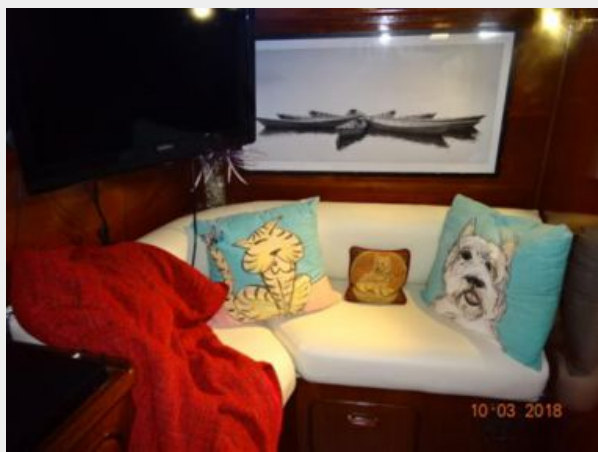






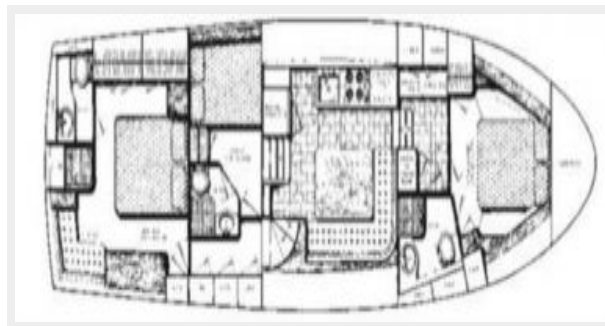












КОНТАКТЫ

Андрей Шестаков (Andrey Shestakov) – ведущий яхтенный брокер отдела продаж яхт и судов компании Shestakov Yacht Sales Inc. Официальный представитель Shestakov Yacht Sales Inc. для русскоговорящих клиентов в центральном офисе компании в Майами/Форт Лодердейл/Флорида/США.

Контактная информация

Email: andrey@shestakovyachtsales.com

Web: shestakovyachtsales.com

Телефоны

Краснодарский край: **+7(918)465-66-44**

США, Майами, Флорида: **+1(954)274-4435**

Время работы

Понедельник – Суббота: **9:00 - 21:00**
EDT

Воскресенье: **Закрето**

Адрес



Harbour Towne Marina, 850 NE 3rd St,
STE 213, Dania, FL 33004