

42 2009 CRUISERS 420 EXPRESS — CRUISERS



Builder: CRUISERS

Year Built: 2009

Model: Cruiser

Price: PRICE ON APPLICATION

Location: United States

LOA: 42' 0" (12.80m)

Beam: 13' 6" (4.11m)

Max Draft: 3' 8" (1.12m)

Our experienced yacht broker, Andrey Shestakov, will help you choose and buy a yacht that best suits your needs 42 2009 Cruisers 420 Express — CRUISERS from our catalogue. Presently, at Shestakov Yacht Sales Inc., we have a wide variety of yachts available on our sale's list. We also work in close contact with all the big yacht manufacturers from all over the world.

If you would like to buy a yacht 42 2009 Cruisers 420 Express — CRUISERS or would like help answering any questions concerning purchasing, selling or chartering a yacht, please call +1(954)274-4435

TABLE OF CONTENTS

| | |
|------------------------------|----|
| TABLE OF CONTENTS | 2 |
| SPECIFICATIONS | 5 |
| Overview | 5 |
| Basic Information | 5 |
| Dimensions | 5 |
| Speed, Capacities and Weight | 5 |
| Accommodations | 6 |
| Hull and Deck Information | 6 |
| Engine Information | 6 |
| DETAILED INFORMATION | 7 |
| Accommodations | 7 |
| Upper Cockpit and Helm | 7 |
| Lower Cockpit | 7 |
| Engine Room | 7 |
| Transom | 7 |
| Exclusions | 8 |
| Disclaimer | 8 |
| PHOTOS | 9 |
| 420 Profile | 9 |
| Hardtop | 9 |
| Clear Gauges | 9 |
| Raymarine C120 | 9 |
| ICOM VHF | 9 |
| Touch Pad Control Panel | 9 |
| Throttles | 10 |
| Shifters | 10 |
| Helm | 10 |
| Double Wide Helm Seat | 10 |

| | |
|------------------------------|----|
| Upper Cockpit Seats | 10 |
| Upper Cockpit Seats Adjusted | 10 |
| Aft Cockpit Seats | 11 |
| Cockpit Fridge | 11 |
| Cockpit Wet Bar | 11 |
| Cockpit Ice Maker | 11 |
| Cockpit Storage | 11 |
| Cockpit Storage | 11 |
| Transom Shower & Gate | 12 |
| Transom Storage | 12 |
| Swim Platform | 12 |
| Swim Platform Cooler | 12 |
| Hull Side Windows | 12 |
| Cockpit Speakers | 12 |
| Salon Sofa | 13 |
| Salon Sofa Bed | 13 |
| Salon Carpet | 13 |
| Starboard Side Salon | 13 |
| TV | 13 |
| Galley | 13 |
| Convection Oven | 14 |
| 2 Burner Cooktop | 14 |
| Galley Sole | 14 |
| Galley Storage | 14 |
| Galley fridge | 14 |
| Central Vac | 14 |
| Owner's Stateroom | 15 |
| Stall Shower | 15 |
| Head | 15 |

| | |
|-------------------------------------|-----------|
| Engine Room Access | 15 |
| Volvo 8.1 GXI | 15 |
| Volvo 8.1 GXI | 15 |
| Volvo 8.1 GXI | 16 |
| Volvo 8.1 GXI | 16 |
| Volvo 8.1 GXI | 16 |
| Volvo 8.1 GXI | 16 |
| Fuse Panel And Breakers | 16 |
| Oil Changer & Fire Suppression | 16 |
| Walk Thru Windshield | 17 |
| Foredeck | 17 |
| Walk Thru Windscreen | 17 |
| Sunpad | 17 |
| Fender Storage - Anchor Locker | 17 |
| Maxwell Windlass With Foot Controls | 17 |
| Bow Light | 18 |
| 420 Profile | 18 |
| CONTACTS | 19 |
| Contact details | 19 |
| Telephones | 19 |
| Office hours | 19 |
| Address | 19 |

SPECIFICATIONS

Overview

THIS IS A NICE BOAT & IS WELL PRICED. THIS IS NOT A FIRE SALE.

GREAT COMPRESSION ON BOTH VOLVOS JAN 2018 - GOOD OIL SAMPLES PULLED FEB 2018-

This 2009 42 Cruisers is a stylish, well maintained, clean, modern day sport cruisers with twin Volvo 8.1 GXI V Drives with fresh risers and manifolds with 311 hours. A bow thruster, 7.3 KW generator with 185 hours in a sound shield along with 26000 BTU air conditioning and SAT TV. She has a beautiful high gloss cherry interior, a large owners stateroom with an inline berth. In the head is a stall shower, the salon has a large salon sofa that will convert into a bed. The 420 Express has a walk-thru windshield.

Basic Information

Category: Cruiser

Sub Category: Express

Model Year: 2009

Year Built: 2009

Country: United States

Dimensions

LOA: 42' 0" (12.80m)

Beam: 13' 6" (4.11m)

Max Draft: 3' 8" (1.12m)

Speed, Capacities and Weight

Displacement: 22000 Pounds

Water Capacity: 70 Gallons

Holding Tank: 50 Gallons

Fuel Capacity: 380 Gallons

Accommodations

Total Cabins: 1

Total Heads: 1

Hull and Deck Information

Hull Material: Fiberglass

Engine Information

Engines: 2

Manufacturer: Volvo Penta

Model: 8.1 GXi

Engine Type: Inboard

Fuel Type: Gas

DETAILED INFORMATION

Accommodations

Down three steps into an inviting salon with rich cherry high gloss cherry interior. The salon has good head room, a carpet sole with carpet protector. The owner's air-conditioned stateroom is forward with an inline berth with good storage under the bed. Port and starboard side in the master are cedar lined closets along with port and starboard hull side storage. There is a pull out curtain for privacy.

The head has a stall shower, Vacu flush toilet, sink and medicine cabinet, the head has a solid privacy door.

Upper Cockpit and Helm

Electronics consist of a functional Raymarine C120 functioning Icom ICOM324. The vessel has a working bow thruster. All gauges are clear, throttles and shifters are in good condition – The captain's seat is a double wide helm seat with bolsters. To the port side of the helm is an adjustable lounge seat. You can walk thru the windshield to the bow. At the bow is a nice concealed anchor locker with foot controls, Maxwell windlass and two fender holders on the bow rail is the Golight remote bow light. The helm area is covered with a very stylish hardtop with sunroof.

Lower Cockpit

The lower cockpit is comfortable with storage under the L- shape seats, engine room access through the cockpit soles along with an inspection hatch. In the cockpit on the starboard side is the cockpit wet bar with drink holders, fridge and sink. All the exterior seats are in great condition.

Engine Room

In the engine room are twin 8.1 GXI V-Drives with fresh risers and manifolds. Engine room is clean, with a clean Kohler gen in a sound shield, easy access to the ships batteries, the gen battery switches and main battery switches. Along with the vessels boats fuses and the steering. In the engine room, you will find the reverse oil change system along with a manual/automatic fire suppression system.

Transom

She has a molded swim platform with in deck swim platform storage bin, swim ladder. On the

transom is the fender/line storage, a transom gate to the port side with transom shower.

Exclusions

Owner's personal belongings.

Disclaimer

The Company offers the details of this vessel or yacht in good faith but cannot guarantee or warrant the accuracy of this information nor warrant the condition of the vessel. A buyer should instruct his representatives, agents, or his surveyors, to investigate such details as the buyer desires validated. This vessel or yacht is offered subject to prior sale, price change, or withdrawal without notice.

PHOTOS

420 Profile



Hardtop



Clear Gauges



Raymarine C120



ICOM VHF



Touch Pad Control Panel



Throttles



Shifters



Helm



Double Wide Helm Seat



Upper Cockpit Seats



Upper Cockpit Seats Adjusted



Aft Cockpit Seats



Cockpit Fridge



Cockpit Wet Bar



Cockpit Ice Maker



Cockpit Storage



Cockpit Storage



Transom Shower & Gate



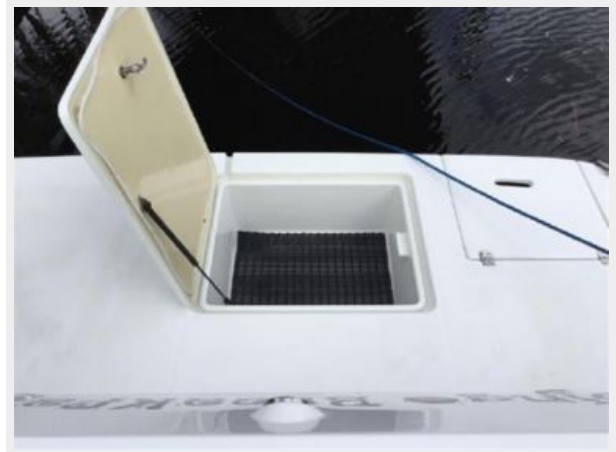
Transom Storage



Swim Platform



Swim Platform Cooler



Hull Side Windows



Cockpit Speakers



Salon Sofa



Salon Sofa Bed



Salon Carpet



Starboard Side Salon



TV



Galley



Convection Oven



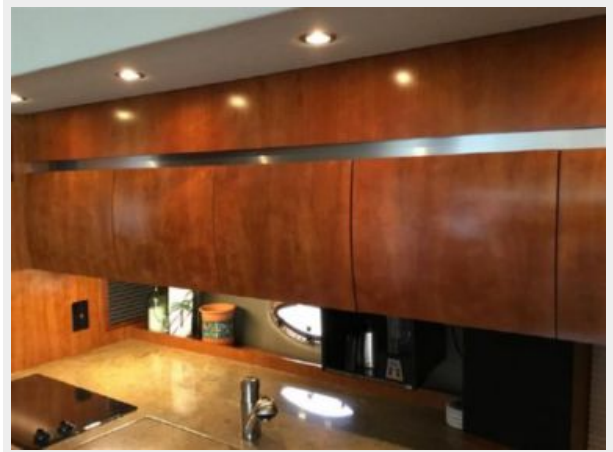
2 Burner Cooktop



Galley Sole



Galley Storage



Galley fridge



Central Vac



Owner's Stateroom



Stall Shower



Head



Engine Room Access



Volvo 8.1 GXI



Volvo 8.1 GXI



Volvo 8.1 GXI



Volvo 8.1 GXI



Volvo 8.1 GXI



Volvo 8.1 GXI



Fuse Panel And Breakers



Oil Changer & Fire Suppression



Walk Thru Windshield



Foredeck



Walk Thru Windscreen



Sunpad



Fender Storage - Anchor Locker



Maxwell Windlass With Foot Controls



Bow Light



420 Profile



www.powerboatguide.com

Cruisers 420/430 Sports Coupe

2009-Current



Following up on the success of the 399 Sports Coupe introduced in 2007, the Cruisers 430 Sports Coupe (called the 420 in 2009-11) takes sporty luxury and comfort to the next level. Like her predecessor, the 430's semi-enclosed cockpit provides a weather-protected platform for entertaining on a grand scale. Amenities include power sunroof, port-side companion seating, wet bar with sink and refrigerator, cockpit tables that convert to a sun lounge, cockpit grill, and a transom rumble seat. Access to the bow is via a side deck or split windshield. Below decks, the 420's opulent cherrywood interior—with its built-in liquor cabinet, neat 7-foot headroom, and crescent-shaped dinette—includes two large staterooms, two heads, and a home-size galley complete with wine-bottle storage and microwave/convection oven. A flat-screen TV and leather seating are standard, and the main head has a separate stall shower. Note the side-by-side chaise lounge sea pad (with adjustable backrests) on the foredeck. An electric hatch provides good access to the engines. The vertical hull ports are a nice design touch. Cruise at 24-25 knots with Volvo 370hp IPS pod drive diesels.

Not Enough Reliable Data to Set Values

| | | | |
|-------------------|---------|-------------|------------|
| Length w/Platform | 43'0" | Fuel | 300 gals. |
| Beam | 13'6" | Water | 80 gals. |
| Draft | 3' | Waste | 50 gals. |
| Weight Gas | 23,000# | Hull Type | Modified-V |
| Weight Diesel | 23,500# | Deadrise At | 16° |



CONTACTS

Andrey Shestakov, leading yacht broker of the sales department of Shestakov Yacht Sales Inc. Shestakov Yacht Sales Inc., the official representative of the Miami/Fort Lauderdale FL headquarters.

Contact details

Email: andrey@shestakovyachtsales.com

Web: shestakovyachtsales.com/en/

Telephones

USA: +1(954)274-4435

Office hours

Monday – Saturday: **9:00 - 21:00** EDT

Sunday: **closed**

Address



Harbour Towne Marina, 850 NE 3rd St,
STE 213, Dania, FL 33004