

42 2009 CRUISERS 420 EXPRESS — CRUISERS



Судостроитель: CRUISERS

Год постройки: 2009

Модель: Крейсер

Цена: ЦЕНА ЯХТЫ ПО ЗАПРОСУ

Местонахождение: United States

Длина общая: 42' 0" (12.80m)

Ширина: 13' 6" (4.11m)

Макс. осадка: 3' 8" (1.12m)

Купить 42 2009 Cruisers 420 Express — CRUISERS а также выбрать подходящую вам яхту из нашего каталога яхт вам поможет опытный яхтенный брокер Андрей Шестаков. На сегодняшний день компания Shestakov Yacht Sales Inc. имеет большое количество яхт в собственном списке продаж, а также тесно сотрудничает со всеми крупными яхтенными производителями по всему миру. Для того чтобы купить яхту 42 2009 Cruisers 420 Express — CRUISERS а также проконсультироваться по любому вопросу связанному с покупкой, продажей, чартером яхт позвоните по телефону **+7(918)465-66-44**.

ОГЛАВЛЕНИЕ

ОГЛАВЛЕНИЕ	2
ХАРАКТЕРИСТИКИ	5
Обзор	5
Основная информация	5
Размеры	5
Скорость, вместимость и масса	5
Размещение	6
Корпус и палуба	6
Информация о двигателе	6
ПОДРОБНОЕ ОПИСАНИЕ	7
Accommodations	7
Upper Cockpit and Helm	7
Lower Cockpit	7
Engine Room	7
Transom	7
Исключения	8
Отказ от ответственности	8
ФОТОГРАФИИ	9
420 Profile	9
Hardtop	9
Clear Gauges	9
Raymarine C120	9
ICOM VHF	9
Touch Pad Control Panel	9
Throttles	10
Shifters	10
Helm	10
Double Wide Helm Seat	10

Upper Cockpit Seats	10
Upper Cockpit Seats Adjusted	10
Aft Cockpit Seats	11
Cockpit Fridge	11
Cockpit Wet Bar	11
Cockpit Ice Maker	11
Cockpit Storage	11
Cockpit Storage	11
Transom Shower & Gate	12
Transom Storage	12
Swim Platform	12
Swim Platform Cooler	12
Hull Side Windows	12
Cockpit Speakers	12
Salon Sofa	13
Salon Sofa Bed	13
Salon Carpet	13
Starboard Side Salon	13
TV	13
Galley	13
Convection Oven	14
2 Burner Cooktop	14
Galley Sole	14
Galley Storage	14
Galley fridge	14
Central Vac	14
Owner's Stateroom	15
Stall Shower	15
Head	15

Engine Room Access	15
Volvo 8.1 GXI	15
Volvo 8.1 GXI	15
Volvo 8.1 GXI	16
Volvo 8.1 GXI	16
Volvo 8.1 GXI	16
Volvo 8.1 GXI	16
Fuse Panel And Breakers	16
Oil Changer & Fire Suppression	16
Walk Thru Windshield	17
Foredeck	17
Walk Thru Windscreen	17
Sunpad	17
Fender Storage - Anchor Locker	17
Maxwell Windlass With Foot Controls	17
Bow Light	18
420 Profile	18
КОНТАКТЫ	19
Контактная информация	19
Телефоны	19
Время работы	19
Адрес	19

ХАРАКТЕРИСТИКИ

Обзор

THIS IS A NICE BOAT & IS WELL PRICED. THIS IS NOT A FIRE SALE.

GREAT COMPRESSION ON BOTH VOLVOS JAN 2018 - GOOD OIL SAMPLES PULLED FEB 2018-

This 2009 42 Cruisers is a stylish, well maintained, clean, modern day sport cruisers with twin Volvo 8.1 GXI V Drives with fresh risers and manifolds with 311 hours. A bow thruster, 7.3 KW generator with 185 hours in a sound shield along with 26000 BTU air conditioning and SAT TV. She has a beautiful high gloss cherry interior, a large owners stateroom with an inline berth. In the head is a stall shower, the salon has a large salon sofa that will convert into a bed. The 420 Express has a walk-thru windshield.

Основная информация

Тип судна: Крейсер

Подкатегория: Express

Модельный год: 2009

Год постройки: 2009

Страна: United States

Размеры

Длина общая: 42' 0" (12.80m)

Ширина: 13' 6" (4.11m)

Макс. осадка: 3' 8" (1.12m)

Скорость, вместимость и масса

Водоизмещение: 22000 Pounds

Вместимость воды: 70 Gallons

Вместимость сточного бака: 50 Gallons

Объем топливного бака: 380 Gallons

Размещение

Всего кают: 1

Всего ком. состава: 1

Корпус и палуба

Материал корпуса: Fiberglass

Информация о двигателе

Двигатели: 2

Производитель: Volvo Penta

Модель: 8.1 GXi

Тип двигателя: Inboard

Тип топлива: Gas

ПОДРОБНОЕ ОПИСАНИЕ

Accommodations

Down three steps into an inviting salon with rich cherry high gloss cherry interior. The salon has good head room, a carpet sole with carpet protector. The owner's air-conditioned stateroom is forward with an inline berth with good storage under the bed. Port and starboard side in the master are cedar lined closets along with port and starboard hull side storage. There is a pull out curtain for privacy.

The head has a stall shower, Vacu flush toilet, sink and medicine cabinet, the head has a solid privacy door.

Upper Cockpit and Helm

Electronics consist of a functional Raymarine C120 functioning Icom ICOM324. The vessel has a working bow thruster. All gauges are clear, throttles and shifters are in good condition – The captain's seat is a double wide helm seat with bolsters. To the port side of the helm is an adjustable lounge seat. You can walk thru the windshield to the bow. At the bow is a nice concealed anchor locker with foot controls, Maxwell windlass and two fender holders on the bow rail is the Golight remote bow light. The helm area is covered with a very stylish hardtop with sunroof.

Lower Cockpit

The lower cockpit is comfortable with storage under the L- shape seats, engine room access through the cockpit soles along with an inspection hatch. In the cockpit on the starboard side is the cockpit wet bar with drink holders, fridge and sink. All the exterior seats are in great condition.

Engine Room

In the engine room are twin 8.1 GXI V-Drives with fresh risers and manifolds. Engine room is clean, with a clean Kohler gen in a sound shield, easy access to the ships batteries, the gen battery switches and main battery switches. Along with the vessels boats fuses and the steering. In the engine room, you will find the reverse oil change system along with a manual/automatic fire suppression system.

Transom

She has a molded swim platform with in deck swim platform storage bin, swim ladder. On the

transom is the fender/line storage, a transom gate to the port side with transom shower.

Исключения

При продаже яхты исключаются личные вещи владельца.

Отказ от ответственности

Компания предоставляет описание судна или яхты добросовестно, но не может гарантировать точность этой информации, а также не ручается за техническое состояние. Покупатель должен проинструктировать своих агентов или оценщиков исследовать представленную информацию более подробно, по собственному желанию. Продажа судна или яхты, изменение цены или снятие с продажи будет происходить без предварительного уведомления.

ФОТОГРАФИИ

420 Profile



Hardtop



Clear Gauges



Raymarine C120



ICOM VHF



Touch Pad Control Panel



Throttles



Shifters



Helm



Double Wide Helm Seat



Upper Cockpit Seats



Upper Cockpit Seats Adjusted



Aft Cockpit Seats



Cockpit Fridge



Cockpit Wet Bar



Cockpit Ice Maker



Cockpit Storage



Cockpit Storage



Transom Shower & Gate



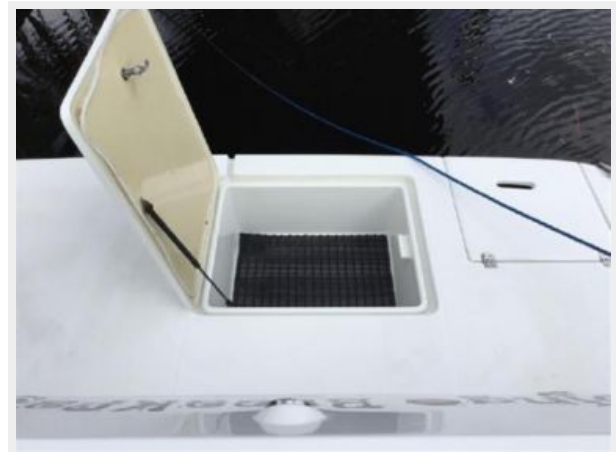
Transom Storage



Swim Platform



Swim Platform Cooler



Hull Side Windows



Cockpit Speakers



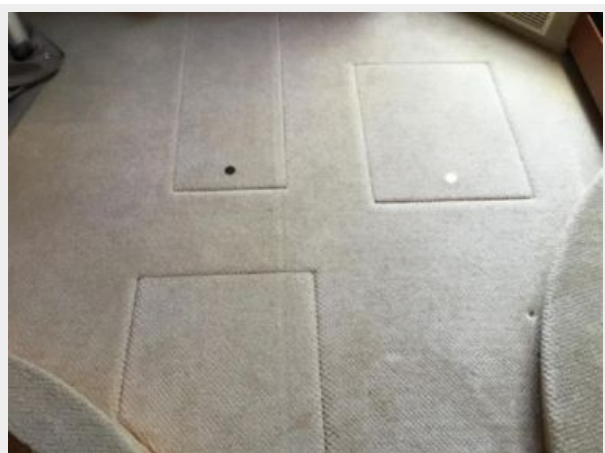
Salon Sofa



Salon Sofa Bed



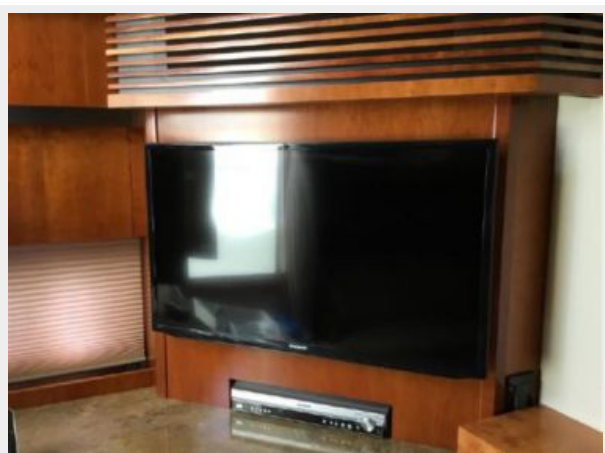
Salon Carpet



Starboard Side Salon



TV



Galley



Convection Oven



2 Burner Cooktop



Galley Sole



Galley Storage



Galley fridge



Central Vac



Owner's Stateroom



Stall Shower



Head



Engine Room Access



Volvo 8.1 GXI



Volvo 8.1 GXI



Volvo 8.1 GXI



Volvo 8.1 GXI



Volvo 8.1 GXI



Volvo 8.1 GXI



Fuse Panel And Breakers



Oil Changer & Fire Suppression



Walk Thru Windshield



Foredeck



Walk Thru Windscreen



Sunpad



Fender Storage - Anchor Locker



Maxwell Windlass With Foot Controls



Bow Light



420 Profile



www.powerboatguide.com

Cruisers 420/430 Sports Coupe

2009-Current



Following up on the success of the 399 Sports Coupe introduced in 2007, the Cruisers 430 Sports Coupe (called the 420 in 2009-11) takes sportyacht luxury and comfort to the next level. Like her predecessor, the 430's semi-enclosed cockpit provides a weather-protected platform for entertaining on a grand scale. Amenities include power sunroof, port-side companion seating, wet bar with sink and refrigerator, cockpit tables that convert to a sun lounge, cockpit grill, and a transom rumble seat. Access to the bow is via a side deck or split windshield. Below decks, the 420's opulent cherrywood interior—with its built-in liquor cabinet, neat 7-foot headroom, and crescent-shaped dinette—includes two large staterooms, two heads, and a home-size galley complete with wine-bottle storage and microwave/convection oven. A flat-screen TV and leather seating are standard, and the main head has a separate stall shower. Note the side-by-side chaise lounge sea pad (with adjustable backrests) on the foredeck. An electric hatch provides good access to the engines. The vertical hull ports are a nice design touch. Cruise at 24-25 knots with Volvo 370hp IPS pod drive diesels.

Not Enough Reliable Data to Set Values

Length w/Platform	43'0"	Fuel	300 gals.
Beam	13'6"	Water	80 gals.
Draft	3'	Waste	50 gals.
Weight, Gas	23,000#	Hull Type	Modified-V
Weight, Diesel	23,500#	Deadrise At	16°



КОНТАКТЫ

Андрей Шестаков (Andrey Shestakov) – ведущий яхтенный брокер отдела продаж яхт и судов компании Shestakov Yacht Sales Inc. Официальный представитель Shestakov Yacht Sales Inc. для русскоговорящих клиентов в центральном офисе компании в Майами/Форт Лодердейл/Флорида/США.

Контактная информация

Email: andrey@shestakovyachtsales.com

Web: shestakovyachtsales.com

Телефоны

Краснодарский край: **+7(918)465-66-44**

США, Майами, Флорида: **+1(954)274-4435**

Время работы

Понедельник – Суббота: **9:00 - 21:00**
EDT

Воскресенье: **Закрито**

Адрес



Harbour Towne Marina, 850 NE 3rd St,
STE 213, Dania, FL 33004