

## IT'S 5 O'CLOCK SOMEWHERE — MANTA



**Судостроитель:** MANTA

**Год постройки:** 2005

**Модель:** Катамаран

**Цена:** ЦЕНА ЯХТЫ ПО ЗАПРОСУ

**Местонахождение:** United States

**Длина общая:** 42' 0" (12.80m)

**Ширина:** 21' 0" (6.40m)

**Крейс. скорость:** 7 Kts. (8 MPH)

Купить It's 5 O'Clock Somewhere — MANTA а также выбрать подходящую вам яхту из нашего каталога яхт вам поможет опытный яхтенный брокер Андрей Шестаков. На сегодняшний день компания Shestakov Yacht Sales Inc. имеет большое количество яхт в собственном списке продаж, а также тесно сотрудничает со всеми крупными яхтенными производителями по всему миру.

Для того чтобы купить яхту It's 5 O'Clock Somewhere — MANTA а также проконсультироваться по любому вопросу связанному с покупкой, продажей, чартером яхт позвоните по телефону **+7(918)465-66-44**.

# ОГЛАВЛЕНИЕ

ОГЛАВЛЕНИЕ	2
ХАРАКТЕРИСТИКИ	5
Обзор	5
Основная информация	5
Размеры	5
Скорость, вместимость и масса	5
Размещение	6
Корпус и палуба	6
Информация о двигателе	6
ПОДРОБНОЕ ОПИСАНИЕ	7
Accommodations	7
Salon / Dinette/ Nav Station	7
Nav Station	8
Galley	8
Port Hull / Owner's Suite	8
Owner's Head and Shower	9
Starboard Hull / Guest Staterooms / Guest Head	9
Electronics and Navigation	10
Electrical Equipment	10
Plumbing	11
Construction	11
Deck Equipment and Features	12
Sails and Rigging	13
Mechanical Equipment and Engine	14
Safety Equipment	15
Exclusions	15
Исключения	15
Отказ от ответственности	15

ФОТОГРАФИИ	16
Salon / Dinette	16
Salon Seating	16
Salon Wet Locker Storage and TV	16
Salon Entertainment	16
Salon Nav Station and Refrigerator / Freezer	16
Salon Nav Station	16
Galley	17
Galley	17
Galley	17
Galley Refrigerator	17
Galley Freezer	18
Galley Ice Maker	18
Port Hull Companionway Inboard Storage Looking Aft	18
Port Hull Entry with Bookcases	18
Port Hull Companionway Outboard Storage Looking Aft	19
Port Hull Owner's Stateroom	19
Port Hull Owner's Stateroom Storage	19
Port Hull Owner's Stateroom Storage	19
Port Hull Companionway Looking Forward	20
Port Hull Owner's Stateroom TV	20
Port Hull Owner's Vanity	20
Port Hull Owner's Head, Vanity and Shower	20
Port Hull Owner's Shower	21
Starboard Hull Entry with Bookcase	21
Starboard Hull VIP Guest Stateroom Aft	21
Starboard Hull VIP Guest Stateroom Storage and TV	21
Starboard Hull Forward Guest Stateroom	22
Starboard Hull Looking Forward from VIP Guest Stateroom	22

---

Starboard Hull Head and Vanity	22
Washer / Dryer in Starboard Hull Forward Guest Stateroom	22
Starboard Hull Shower Area	23
Helm Station	23
Captain's Helm	23
Cockpit Cabin Entry	23
Cockpit Seating and Storage Boxes	23
Aft Cockpit Sling Seat	23
Port Engine	24
Forward Trampoline and Deck Seat	24
Starboard Engine	24
Bow View	24
Port Side Bow View	24
Starboard Bow View	24
<b>КОНТАКТЫ</b>	<b>26</b>
Контактная информация	26
Телефоны	26
Время работы	26
Адрес	26

# ХАРАКТЕРИСТИКИ

## Обзор

**NEW TO MARKET .... 2005 42' MANTA MKII SAIL CATAMARAN "It's 5 O'Clock Somewhere"**

Very nice, one owner since new. Only 1400 original hours.

All the options, including: NEW 2016 Generator, Air Conditioning, Water Maker, Washer / Dryer, Ice Maker, Solar Panels, Sling Seat.

NEW Trampolines, Stripes and Fresh Bottom Paint 10/17.

All Electronics were updated 2011.

Includes Hard Bottom Dinghy with 20hp Electric-Start Outboard.

This vessel will please any Catamaran buyer. Call for details.

## Основная информация

Тип судна: Катамаран

Модельный год: 2005

Год постройки: 2005

Страна: United States

## Размеры

Длина общая: 42' 0" (12.80m)

Ширина: 21' 0" (6.40m)

Трапы: 60' 0" (18.29m)

## Скорость, вместимость и масса

Крейс. скорость: 7 Kts. (8 MPH)

Водоизмещение: 16500 Pounds

Вместимость воды: 100 Gallons

Вместимость сточного бака: 40 Gallons

Объем топливного бака: 120 Gallons

---

## Размещение

---

**Всего кают:** 3

**Всего ком. состава:** 2

---

## Корпус и палуба

---

**Материал корпуса:** Fiberglass

**Комплектация корпуса:** Катамаран

---

## Информация о двигателе

---

**Двигатели:** 2

**Производитель:** Volvo Penta

**Модель:** MD2030

**Тип двигателя:** Sail Drive

**Тип топлива:** Diesel

# ПОДРОБНОЕ ОПИСАНИЕ

## Accommodations

This beautiful vessel is completely appointed for long range cruising with the "Owners" version layout. The Port Hull features the Owner's Suite with Master Stateroom and private Head with separate shower. Pantry storage and multiple built-in book shelves and storage cabinets line the port hull companionway. The Starboard Hull features an aft VIP Guest Stateroom and a forward Guest Stateroom. A Guest Head is shared and built-in bookcases line the companionway. The vessel includes a fully equipped Galley and an inviting and relaxing Salon for lounging and entertaining.

- Fully air conditioned.
- Interior woods are varnished cherry wood veneer and teak trim throughout.
- Solid door trim and louvered teak doors.
- Optional and upgraded Diplomat Blue UltraLeather upholstery.
- Almond Galaxy Swanstone composite countertops with wood edge inserts.
- Vinyl headliners.
- Fabric hull-liners.
- Simulated teak and holly pressurized laminate soles are very durable and maintenance-free.
- Splendide Washer/ Dryer.
- Spectra Newport 400GPD Water Maker with Zeta rod (ZBRANE).
- Cabin headroom is 6' 4".

## Salon / Dinette/ Nav Station

Salon / Dinette / Nav Station area is open to the Galley.

- L-shaped settee with optional and upgraded Diplomat Blue UltraLeather upholstery and storage under.
- (2) Upholstered ottomans with storage.
- Large adjustable table with Almond Galaxy Swanstone surface for dining or entertaining.
- Acrylic tinted Salon windows.
- Full-size hanging/wet locker with storage shelf and floor drains.
- Samsung 19" flat screen TV with DVD (NEW 2015).
- Clarion XMD3 AM/FM/CD/Sirius Satellite with remote at Helm (2013).
- Weems and Plath wall-mounted clock and barometer.
- (2) Fans.
- (2) Bomar hatches with solar fans and screens.
- Bowmar companionway door with locking handle with roll away screen.

---

## Nav Station

---

- Chart table with flat chart storage area below.
- ICOM 422 VHF Radio with DSC and Distress.
- Raymarine Auto Pilot.
- Garmin GPS ties into the Raymarine GPS at Helm.
- Raymarine ST 60 Tri Data (2011).
- Blue Sky solar boost remote display.
- Master Volt inverter control.
- Electrical panel with Generator controls.
- Victron 100 amp battery charger.
- Charles Marine twin 220v/110v isolation transformers (in cabinet).
- Spectra water maker controller.
- Yacht Guard surge protection.
- 12v Receptacle, telephone jack, serial port.

---

## Galley

---

U-shaped Galley is up and to port, open to the Salon / Nav Station. Large Galley pantry is located in Port Hull.

- Adler Barbour Top loading 12v 10 cubic ft. 60/40 refrigerator/freezer with 6" foam insulation and divider.
- ULine ice maker.
- Force-10 (3) burner propane stove with oven and storage locker below.
- Apollo convection / microwave (NEW).
- Almond Galaxy Swanstone solid surface counter tops with wood edge inserts.
- Large integrated Almond Galaxy Swanstone sink.
- Sink faucet with hot/cold water mixer.
- Fresh water foot pump with faucet.
- Built-in countertop access trash chute with cover.
- Built-in counter storage with cover.
- Multiple upper and lower cabinet storage and drawers.
- Stove exhaust hood and fan.
- 12v Exhaust blower and remote solenoid shut-off valve for propane (20lb bottle in cockpit locker).
- Trident propane controller.
- 12v DC 2-speed Hella Fan.
- Overhead deck hatch.

---

## Port Hull / Owner's Suite

---



Owner's Master Stateroom is aft. Private Head forward with separate full shower. Companionway between Stateroom and Head with multiple custom built-in book shelves, and optional towel and storage cabinet and opening portlight on one side and generous pantry storage inboard.

- Queen size berth with Island Nautical custom mattress.
- Settee with optional and upgraded Diplomat Blue UltraLeather upholstered seat and storage under.
- Extra large cedar-lined hanging locker.
- (4) Large drawers.
- (2) Deep cabinets.
- Flatscreen TV.
- (2) LED reading lights.
- (2) CCF overhead lights.
- 12v DC 2-speed Hella fan.
- Digital A/C controls.
- (2) Stainless steel opening portlights with screens and shades.
- Headroom (hulls) 6' 3".

## Owner's Head and Shower

---

- PAR QuietFlush electric marine fresh water toilet.
- Vanity with Almond Galaxy Swanstone countertop, sink and storage below.
- Mirrored medicine cabinet.
- Separate extra large stall shower with shower head, water controller and curtain.
- Overhead deck hatch with solar vent.
- Stainless steel opening portlight with screen and shade.
- 12v DC 2-speed Hella fan.

## Starboard Hull / Guest Staterooms / Guest Head

---

VIP Guest Stateroom is aft. The Guest Head can be accessed from the companionway or the forward Guest Stateroom. Optional large bookcase/ library in the companionway. Companionway overhead 12v lighting.

### Aft VIP Stateroom

- Queen berth facing athwartship.
- Settee with optional and upgraded Diplomat Blue UltraLeather upholstered seat and storage under.
- Cedar-lined hanging locker.
- (3) Large drawers.
- Flatscreen TV.
- (2) Reading lights.

- (2) CCF overhead lights.
- Overhead hatch with external sunshade.
- (2) Stainless steel opening portlights with screens and shades.
- 12v DC 2-speed Hella fan.

### Forward Guest Stateroom

- Double berth.
- Upper cabinetry above berth.
- Large locker with shelving.
- (1) Reading light.
- (1) Overhead CCF lighting.
- **Splendide 2100 Washer / Dryer combo** in cabinet with storage cabinetry below.
- Groco macerator under berth, with external control panel.
- Spectra water maker under berth.
- Water heater under berth.

### Guest Head

- PAR QuietFlush electric marine fresh water toilet.
- Vanity with Almond Galaxy Swanstone countertop, sink and storage below.
- Mirrored medicine cabinet.
- Separate shower stall with shower head, water controller and curtain.
- 12v DC 2-speed Hella fan.
- Stainless steel opening portlight with screen and shade.

## Electronics and Navigation

---

- Raymarine C-90W Color GPS / Chart Plotter / Radar with 4kW Raydome (2011).
- Raymarine ST6002 Smart Pilot (2011).
- Raymarine ST 60 Wind Instrumentation (NEW 2017).
- ICOM IC-M-422 VHF Radio with Command Mic (2011).
- Ritchie Compass.
- ICOM VHF Remote.
- Clarion XMD3 AM/FM/CD/Sirius Satellite radio receiver Helm remote.
- Hand-held mobile microphone (2014).
- Both GPS units are integrated to AIS Chart Plotter.

## Electrical Equipment

---

- Next Generation 5.5 kW Generator (NEW 2016) - 20 hours.
- Paneltronics A/C-D/C electrical panel with digital meters.
- (2) 30 amp (125v and 250v) Shore power cords.

- (1) 50amp Splitter.
- (2) Balmar 100amp alternators.
- (2) Balmar MaxCharge regulators coordinated by Balmar Centerfielder.
- (2) Balmar DuoCharge regulators to maintain engine start batteries.
- (6) House batteries.
- (2) Starting batteries.
- Victron 100amp Battery charger.
- Battery isolators with engine parallel switch.
- Link 10 Battery Monitor.
- (6) Siemens Power Max 75 watt solar panels with dedicated charge controller / power regulator.
- MasterVolt 2000 SINE inverter.
- Shakespeare amplified broadcast TV antenna.
- 12v and 120v Outlets at Helm, (3) additional 12v outlets in cabin.
- 12v Fluorescent lighting in Galley, Head, and Cockpit.
- 12 volt Halogen reading lights in Salon.
- 12v Cold Cathode Fluorescent dome lights throughout including all engine and mechanical rooms.
- LED Courtesy night lights.
- External switches for remote lighting in engine rooms.
- Taylorbrite white / red fluorescent light at chart table.

## Plumbing

---

- Spectra Newport 400 gpd water maker with Zeta rod (ZBRANE) (rebuilt and pickled 2016).
- 10 Gallon hot water heater - 110v and engine exchange.
- Flojet variable speed 12v pressurized water system.
- (2) PAR QuietFlush electric marine fresh water toilets.
- (2) 20 Gallon polyethylene holding tanks with Y-valve, level gauge, macerator pump and deck fitting.
- (2) Jabsco 1950 gph 12v bilge pumps with auto switch.
- (2) Whale Gusher manual bilge pumps.
- (2) Scaled Shower sumps with auto pump-out.
- 100 gallon Baffled aluminum freshwater tank.
- Anchor wash down and heads supplied by saltwater 12v Flojet pressurized water system.
- 1-1/2" Sea water thru-hull central feed for air conditioning, generator, and water maker, with strainer.

## Construction

---

- Hull, deck and bulkhead constructed of triaxial, biaxial, and unidirectional fiberglass with vinylester, isophthalic resins.
- Ferro Super Shield exterior gel-coat.
- Nida-core in subsoles and bulkheads, all vacuum bagged for stiffness, strength and light weight.
- Hull fastened to deck chemically and mechanically.
- Collision bulkheads with watertight compartments in bow, stern and keels.
- Deck hardware reinforced with aluminum plates molded into lay-up.
- Twin high density foam / fiberglass rudders with 2" diameter solid stainless steel shaft.
- Aluminum radar arch / hardtop / dinghy davit - welded, anodized, aluminum tube construction.
- All thru-hulls and seacocks are non-corrosive Marelon.
- All stanchions, handrails, cleats, opening ports and hatches, locker hatches, hinges, chain plates, anchor roller, and fuel and water fills are 316 stainless steel.

## Deck Equipment and Features

---

**Includes 2015 10' Caribe Hard Bottom Dinghy with 20hp Mercury Electric Start 4-Stroke Motor.**

- Manta fiberglass hard top with integral welded aluminum radar arch.
- Full Eisenglass side panels with matching protective soft covers.
- 5-Piece Windshield with polycarbonate forward corners.
- Bulkhead-mounted stainless steel steering wheel with wheel brake.
- Molded console with space for instrumentation and line bin at Helm.
- Adjustable Captain's chair with foot rest.
- Sail control lines operable from Helm.
- Viewing hatch above Helm seat.
- Cockpit seating with cushioned backrests and removable seat cushions.
- Optional Cockpit rear sling seat mounted from arch support.
- (4) Large fiberglass Cockpit storage lockers (one with side entry).
- (2) Bose waterproof Cockpit speakers.
- 110v AC and TV Outlets just outside door in Cockpit.
- 12v DC Cockpit outlet.
- BBQ grill (sets over 4th storage box).
- Unique level boarding step on both sides aft.
- Vinyl coated polyester mesh trampolines (NEW Feb. 2018).
- Stern dockside water connection.
- Hot and cold deck shower.
- Maxwell 1200 power anchor windlass with foot switch (NEW 2017).
- Custom stainless steel anchor rollers on bow and reserve anchor (dual system).
- (1) Spade 44lb. anchor (NEW 2017).

- (1) Fortress FX23 anchor.
- 200' Stainless steel 5/16" chain.
- Anchor chain locker.
- 12v Salt water anchor/chain wash down.
- (2) Telescoping stern swim ladders.
- Upper and lower lifelines are vinyl covered stainless steel.
- All running deck hardware and winches are by Harken.
- Bridge deck clearance is 24'.
- Molded non-skid on all deck surfaces.
- (8) Mooring cleats.
- Molded Fiberglass salon window louvers.
- Polycast 3/8" acrylic tinted salon windows.
- Full-width seat mounted from the arch support.
- Radar mount.
- Spotlight on forward bow with wireless remote.
- "Smart" LED masthead running/anchor light combination.
- Stainless steel handrails.
- (2) Stainless steel transom rails
- (1) 12" Stainless steel anchor cleat.
- Stainless steel boarding rails.
- (2) Stainless steel cabin top rails.
- Stainless steel corner bow rails with integral seat.
- Double life lines with boarding gates forward and aft.
- (6) Bowmar opening deck hatches with screens.
- (8) Bowmar opening ports with screens and privacy shades.
- Privacy opaque hatches in all heads and cabins.
- Conventional running lights.
- Navigation running lights and LED anchor lights.
- Combination steaming/foredeck light.
- 12v LED courtesy lights.
- **NEW Fresh Bottom Paint and stripes 10/2017.**

## Sails and Rigging

At Helm you can handle virtually every sail control line: main halyard, jib halyard and Gennaker halyard, main sheet and jib sheet and (2) single line reefs lead to Helm through deck organizer to sheet stoppers and then to Harken CST 44 two-speed self-tailing electric winch. All sails are in very good condition with matching sail covers.

- Full batten Doyle high performance Dacron mainsail with (2) reef points with a removable sail cover.
- Lazyjacks and boom basket.
- Jib: Doyle high performance offshore Dacron sails, full battens.

- Sunbrella covers.
- Harken halyard #16 winch on mast, Harken CST 44 two-speed self tailing gennaker sheeting winch in Cockpit.
- Harken 44 CST two-speed, self tailing electric winch at Helm for all halyards, sheets and reefs.
- JSI Custom stack pack (NEW 2016).
- Aft lead adjustable gennaker tack system.
- Adjustable back stays.
- Spinnlock clutch array for single point line control.
- Harken sail track slide system.
- Traditional removable Sunbrella sail covers.
- Clew outhaul and additional deck organizer.
- Camber Spar self tacking jib.
- Topping lift and jib lazy jacks.
- Rigid boom vang.
- Winch handle.
- Awlgrip painted aluminum mast and boom.
- Stainless Steel rigging with chafe protection.
- Harken running hardware.
- All running rigging color coded.
- Extra line bag at Helm.
- Dutchman boom brake system.
- (2) Harken 6:1 lifting tackle.
- Dinghy bridles and 3:1 securing tackle.

## Mechanical Equipment and Engine

---

Engine rooms are easily accessed via the aft berths with enhanced access fore and aft on the starboard side. Manual outdrive oil pump allows oil to be changed/replaced without the need to haul out.

- Twin 30hp Volvo Penta MD 2030D Diesel Engines.
- Volvo 120S Sail drives.
- Volvo 3-blade folding propellers.
- Engine room blowers.
- Engine control panels in Cockpit.
- Single lever shift / throttles.
- 120 Gallon baffled, aluminum diesel tank with remote gauge and deck fitting.
- Dual air conditioning systems: 28,000 total BTU's with reverse cycle and digital thermostat / thermometers.
- Racor fuel filter plumbed in parallel with Puratec fuel polisher.
- Reverso electric oil-change pumps - ALL engines.
- 20lb Propane bottle with gauge in vented locker forward starboard.

- Remote shutoff for propane.
- (6) Hella 12v fans.
- (4) 12v Solar powered ventilators.
- Whitlock pull/pull cable steering system.
- Emergency Tiller.
- (2) Tank Watch holding tank alarms.
- Original Manta and equipment manuals.

---

## Safety Equipment

---

- ACR Global Fix 406Mhz EPIRB (needs battery).
- (4) Portable fire extinguishers.
- Flare Kit.
- PFD's: (2) Type I Adult; (1) Type II Adult, (4) Type V Adult.
- Full Coast Guard Package.

---

## Exclusions

---

- Personal items.

---

## Исключения

---

При продаже яхты исключаются личные вещи владельца.

---

## Отказ от ответственности

---

Компания предоставляет описание судна или яхты добросовестно, но не может гарантировать точность этой информации, а также не ручается за техническое состояние. Покупатель должен проинструктировать своих агентов или оценщиков исследовать представленную информацию более подробно, по собственному желанию. Продажа судна или яхты, изменение цены или снятие с продажи будет происходить без предварительного уведомления.

# ФОТОГРАФИИ

**Salon / Dinette**



**Salon Seating**



**Salon Wet Locker Storage and TV**



**Salon Entertainment**



**Salon Nav Station and Refrigerator / Freezer**



**Salon Nav Station**





**Galley**



**Galley**



**Galley**



**Galley Refrigerator**



**Galley Freezer**



**Galley Ice Maker**



**Port Hull Entry with Bookcases**



**Port Hull Companionway Inboard Storage  
Looking Aft**



**Port Hull Companionway Outboard Storage  
Looking Aft**



**Port Hull Owner's Stateroom**



**Port Hull Owner's Stateroom Storage**

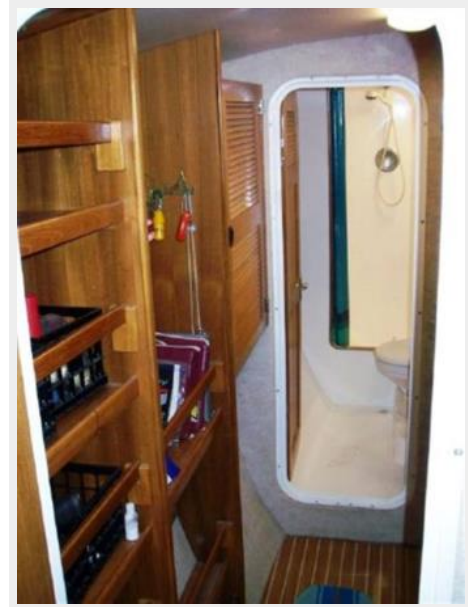


**Port Hull Owner's Stateroom Storage**



## Port Hull Companionway Looking Forward

### Port Hull Owner's Stateroom TV



### Port Hull Owner's Vanity

### Port Hull Owner's Head, Vanity and Shower



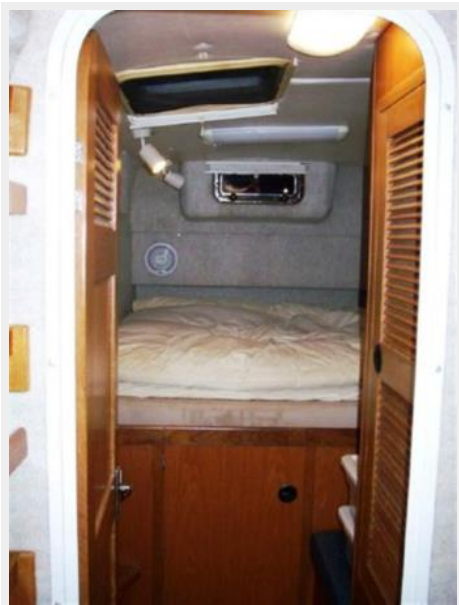
**Port Hull Owner's Shower**



**Starboard Hull Entry with Bookcase**



**Starboard Hull VIP Guest Stateroom Aft**



**Starboard Hull VIP Guest Stateroom Storage and TV**



**Starboard Hull Looking Forward from VIP Guest Stateroom**



**Starboard Hull Forward Guest Stateroom**



**Washer / Dryer in Starboard Hull Forward Guest Stateroom**



**Starboard Hull Head and Vanity**



**Starboard Hull Shower Area**



**Helm Station**



**Captain's Helm**



**Cockpit Cabin Entry**



**Cockpit Seating and Storage Boxes**



**Aft Cockpit Sling Seat**



**Forward Trampoline and Deck Seat**



**Port Engine**



**Starboard Engine**



**Bow View**



**Port Side Bow View**



**Starboard Bow View**







# КОНТАКТЫ

---

Андрей Шестаков (Andrey Shestakov) – ведущий яхтенный брокер отдела продаж яхт и судов компании Shestakov Yacht Sales Inc. Официальный представитель Shestakov Yacht Sales Inc. для русскоговорящих клиентов в центральном офисе компании в Майами/Форт Лодердейл/Флорида/США.

## Контактная информация

---

Email: [andrey@shestakovyachtsales.com](mailto:andrey@shestakovyachtsales.com)

Web: [shestakovyachtsales.com](http://shestakovyachtsales.com)

## Телефоны

---

Краснодарский край: **+7(918)465-66-44**

США, Майами, Флорида: **+1(954)274-4435**

## Время работы

---

Понедельник – Суббота: **9:00 - 21:00**  
EDT

Воскресенье: **Закрито**

## Адрес

---



Harbour Towne Marina, 850 NE 3rd St,  
STE 213, Dania, FL 33004