

SIROCCO — SUNSEEKER



Builder: SUNSEEKER

Year Built: 2001

Model: Motor Yacht

Price: PRICE ON APPLICATION

Location: United States

LOA: 84' 0" (25.60m)

Beam: 19' 4" (5.89m)

Max Draft: 5' 9" (1.75m)

Our experienced yacht broker, Andrey Shestakov, will help you choose and buy a yacht that best suits your needs **Sirocco — SUNSEEKER** from our catalogue. Presently, at Shestakov Yacht Sales Inc., we have a wide variety of yachts available on our sale's list. We also work in close contact with all the big yacht manufacturers from all over the world.

If you would like to buy a yacht **Sirocco — SUNSEEKER** or would like help answering any questions concerning purchasing, selling or chartering a yacht, please call **+1(954)274-4435**

TABLE OF CONTENTS

TABLE OF CONTENTS	2
SPECIFICATIONS	7
Basic Information	7
Dimensions	7
Speed, Capacities and Weight	7
Accommodations	7
Hull and Deck Information	7
Engine Information	7
DETAILED INFORMATION	8
Main Salon/Dining	8
Galley	8
Companionway	9
Day Head	9
Master Stateroom, Aft	9
Master Stateroom Head	9
VIP Stateroom, Forward	10
VIP Stateroom Head	10
Guest Stateroom	10
Guest Stateroom Head	10
Crew Stateroom	11
Flybridge	11
Lower Helm	12
Electronics and Navigational Equipment	12
Aft Deck	12
Deck and Hull	13
Tender Deck	13
Engine Room	13
Exclusions	14

Disclaimer	14
PHOTOS	15
Salon	15
Salon	15
Salon	15
Salon	15
Salon	15
Salon	15
Dinette	16
Helm	16
Helm	16
Helm	16
Helm	16
Helm	16
Helm	16
Stairs to Flybridge	17
Galley	17
Galley	17
Laundry Center	17
Master Stateroom	18
Master Stateroom	18
Master Stateroom	18
Master Stateroom	18
Master Stateroom	18
Master Stateroom	18
Master Stateroom Head	19
Master Stateroom	19
Master Stateroom Head	19
Master Stateroom Head	19
Master Stateroom Head	20

Guest Stateroom	20
Guest Stateroom Head	20
Guest Stateroom	20
VIP Stateroom, Forward	21
VIP Stateroom, Forward	21
VIP Stateroom, Forward	21
VIP Stateroom Head	21
VIP Stateroom Head	22
Crew Stateroom	22
Crew Stateroom	22
Crew Stateroom	22
Crew Stateroom Head	23
Aft Deck	23
Aft Deck	23
Aft Deck	23
Aft Deck	23
Swim Platform	23
Transom	24
Swim Platform	24
Flybridge	24
Flybridge	24
Flybridge	24
Flybridge	24
Flybridge	25
Flybridge	25
Upper Helm	25
FUpper Helm	25
Upper Helm	25
Upper Helm	25

Upper Helm	26
Tender	26
Flybridge Stairs to Aft Deck	26
Bow	26
Bow	26
Bow	27
Bow	27
Bow	27
Engine Room	27
Engine Room	27
Engine Room	28
Engine Room	28
Engine Room	28
Engine Room	28
Engine Room	28
Engine Room	28
Engine Room	29
Engine Room	29
Sirocco	29
Sirocco	29
Sirocco	29
Sirocco	29
Sirocco	30
Sirocco	30
Sirocco	30
Sirocco	30
Sirocco	30
Sirocco	30
Sirocco	31

Sirocco	31
Sirocco	31
Sirocco	31
Sirocco	31
Sirocco	31
CONTACTS	32
Contact details	32
Telephones	32
Office hours	32
Address	32

SPECIFICATIONS

Basic Information

Category: Motor Yacht	Model Year: 2001
Year Built: 2001	Country: United States

Dimensions

LOA: 84' 0" (25.60m)	Beam: 19' 4" (5.89m)
Max Draft: 5' 9" (1.75m)	

Speed, Capacities and Weight

Water Capacity: 300 Gallons	Fuel Capacity: 1500 Gallons
-----------------------------	-----------------------------

Accommodations

Total Cabins: 4	Total Heads: 4
-----------------	----------------

Hull and Deck Information

Hull Material: Fiberglass

Engine Information

Engines: 2	Manufacturer: Caterpillar
Model: 3412	Engine Type: Inboard
Fuel Type: Diesel	

DETAILED INFORMATION

Main Salon/Dining

You enter the main salon through large double sliding doors

- Large U-shaped leather couch to port
- Custom cherry table
- 2 leather stools with storage inside
- Entertainment center to starboard
- Pioneer 50" Plasma TV that pops up from counter
- Bose surround sound system
- Direct TV receiver
- Sony DVD player
- Direct Plus DVR
- Niles SI-120 systems integrations amplifier
- Custom hi-gloss cherry fluted valance
- Roman custom blinds
- Cherry and burl hi-gloss inlay in overhead
- Seatel antenna control panel
- Ample storage to starboard
- Port wing door to access deck
- Raised dining area
- Dining table to starboard to seat 8
- Staircase access to flybridge
- Wet bar to port with bottle and stemware storage below
- SPT stainless steel ice machine
- Sub-Zero refrigerator
- Large Corian buffet counter to port
- Carpeting throughout
- Overhead Halogen lights, 24V

Galley

- Corian counter to port with twin under mount stainless steel sinks
- Ample storage above and below counter
- 2 portlights
- Halogen lighting above, 24V
- Teak and holly sole
- Whirlpool side by side fridge/freezer
- Frigidaire dishwasher
- Whirlpool Gold trash compactor

- Whirlpool self cleaning oven

Companionway

- Access to galley, day head and all cabins
- Whirlpool washing machine
- Whirlpool dryer

Day Head

- Located to starboard of companionway
- Corian counter with under mount sink
- Mirror above/storage below
- Stall shower with frameless acrylic door
- Teak sole
- Halogen lighting above, 24V
- Portlight
- Vacuflush freshwater toilet

Master Stateroom, Aft

- Full beam master
- Island king with storage below
- End tables with lamps
- Built in leather seat
- Large make up vanity with lift up mirror to port
- Large walk-in hanging closet with mirror on back of door
- 3 portlights
- Panasonic LED TV

Master Stateroom Head

- Corian counters with under mount sinks
- His and Hers sinks
- Mirrored vanity above
- Storage below
- Separate space for Vacuflush fresh water toilet
- Teak trimmed mirrored on wall
- Stall shower with frameless acrylic door
- Halogen lighting above, 24V

- Teak sole
- Portlight with teak blinds

VIP Stateroom, Forward

- Queen island berth mid-ship with storage below
- Make up vanity to port with leather stool
- Hanging locker to starboard with mirrored door
- Portlights to port and starboard
- Large hatch above with screen and black out shade
- Ample cabinet storage throughout
- Panasonic TV
- Carpet throughout

VIP Stateroom Head

- Corian counters
- Under mount sink
- Storage below, mirrored above
- Mirrored vanity
- Teak sole
- Portlight
- Halogen lighting above, 24V
- Large stall shower with frameless acrylic door
- Vacufush toilet, fresh water

Guest Stateroom

- Twin over/under bunks
- End table with drawers
- Reading lights
- Portlight with blinds
- Hanging locker with mirrored door
- Storage throughout
- Panasonic TV
- Halogen lighting above, 24V
- Ensuite head

Guest Stateroom Head

- Corian counter with under mount sink
- Mirrored vanity above
- Storage below
- Stall shower with frameless acrylic door
- Portlight with teak blinds
- Teak sole
- Vacuflush fresh water toilet
- Halogen lighting above, 24V

Crew Stateroom

- Single side by side berths with night table between
- Pullman bunk over port berth
- Ample storage drawers throughout
- Hanging locker to starboard
- Reading lights
- Port light
- Panasonic TV
- Ensuite access to day head

Flybridge

Upper Helm

- Twin Besenzoni leather electric helm chairs
- Cherry trimmed steering wheel
- CAT engine gauges and monitoring displays
- ZF micro-command engine controls
- Raymarine E-120 plotter
- Raytheon ST80 depth, compass and speed
- Searchlight control
- Standard Horizon Eclipse VHF radio
- Simrad Robertson AP22 autopilot
- Anchor windlass control
- Engine start/stops
- Furuno radar
- NorthStar 951X
- Bow/stern thruster controls
- Large sunpad to starboard
- Wet bar with sink, Magic Chef refrigerator and Raritan ice machine
- Kenyon electric grill
- Solid teak dining table with bench seating around/storage below

- Bose stereo speakers
- Radar arch
- Bimini top
- Teak decks

Lower Helm

- CAT Micro command controls
- CAT gauges
- Fuel gauges, volt, water tank
- Ritchie compass
- Trim tab
- Switch panels
- Wing door to starboard
- Twin Besenzoni leather electric helm chairs
- Seafire control
- Bow/stern thruster control
- Sanshin HR1012 searchlight control
- Engine start/stops
- Rudder angle indicator
- Cherry trimmed steering wheel
- Windshield wiper

Electronics and Navigational Equipment

Lower Helm

- Raymarine E120
- Furuno 64 mile radar
- Raytheon ST80 multiview
- Raytheon ST80 compass
- Raytheon ST80 masterview
- Garmin GHS10 VHF with wireless handheld

Aft Deck

- Solid teak dining table, seating for eight
- Teak deck
- 24V overhead lighting
- Teak stairs leading to flybridge, storage below

- Twin stern winches, 24V with fairleads
- Stainless steel rails and handrails
- Twin large bosun locker behind aft seating
- Large swim platform
- Twin Pompanette fighting chairs on platform
- Tender garage
- Engine room access

Deck and Hull

- Port and starboard gangways with boarding ladder
- Teak decks throughout
- Stainless steel swim ladder
- Hot and cold swimming shower
- Fresh water marine connection
- Dockside connection, all with cable TV and telephone
- 4 rod holders
- Stern winches
- Lazarette storage
- 12 stainless steel deck cleats
- Delta plow anchor with galvanized chain and rode
- Electric stainless steel winch bow and stern
- Chain locker/fender storage
- Boarding ladder
- Sunpads on foredeck
- Port and starboard bosun lockers on foredeck
- Navy blue hull sides

Tender Deck

- Besenzoni telescoping crane
- 12' Rendova tender with Yamaha 30hp four stroke
- Teak deck

Engine Room

- Caterpillar 3412 with 3575 hours
- 2 Kohler 16kw generators with 2565 hours
- Racor fuel/water separator for mains and generators
- 2 Newmar RM-2495F, 24V battery chargers
- Newmar PT-40V 12V phase three battery charger

- Reverso oil change system
- Bow and stern thruster reservoirs
- SeaFire automatic fire suppression system
- Sea Recovery aqua whisper watermaker
- Sea Recovery commercial filter/oil water separator
- Shore power Elite frequency converter
- Stern thruster
- Spare propellers
- Spare shaft (1)
- 10 dive tank holders
- Engine batteries
- Ship's service batteries
- Glendinning electric cablemaster reels
- Twin 50amp cords

Exclusions

Owner's personal belongings.

Disclaimer

The Company offers the details of this vessel or yacht in good faith but cannot guarantee or warrant the accuracy of this information nor warrant the condition of the vessel. A buyer should instruct his representatives, agents, or his surveyors, to investigate such details as the buyer desires validated. This vessel or yacht is offered subject to prior sale, price change, or withdrawal without notice.

PHOTOS

Salon



Salon



Salon



Salon



Salon



Salon



Dinette



Helm



Helm



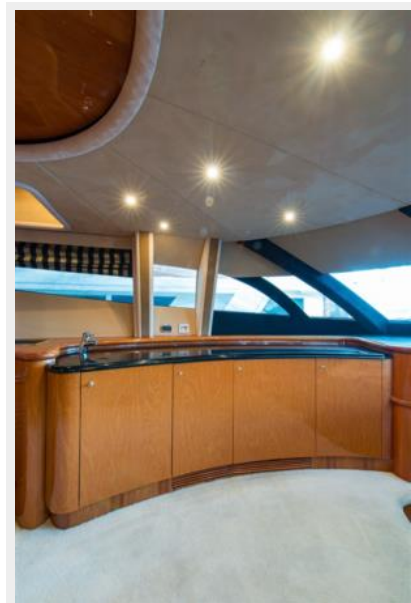
Helm



Helm



Helm



Stairs to Flybridge



Galley



Galley



Laundry Center



Master Stateroom



Master Stateroom



Master Stateroom



Master Stateroom



Master Stateroom



Master Stateroom



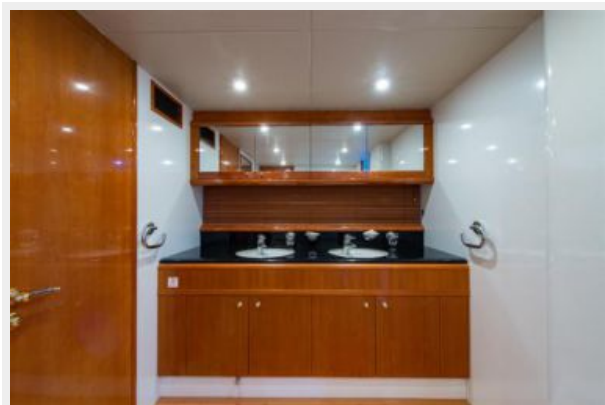
Master Stateroom



Master Stateroom Head



Master Stateroom Head



Master Stateroom Head



Master Stateroom Head



Guest Stateroom



Guest Stateroom Head



Guest Stateroom



VIP Stateroom, Forward



VIP Stateroom, Forward



VIP Stateroom, Forward



VIP Stateroom Head



VIP Stateroom Head



Crew Stateroom



Crew Stateroom



Crew Stateroom



Crew Stateroom Head



Aft Deck



Aft Deck



Aft Deck



Aft Deck



Swim Platform



Transom



Swim Platform



Flybridge



Flybridge



Flybridge



Flybridge



Flybridge



Flybridge



Upper Helm



FUpper Helm



Upper Helm



Upper Helm



Upper Helm



Tender



Flybridge Stairs to Aft Deck



Bow



Bow



Bow



Bow



Bow



Engine Room



Engine Room



Engine Room



Engine Room



Engine Room



Engine Room



Engine Room



Engine Room



Engine Room



Engine Room



Sirocco



Sirocco



Sirocco



Sirocco



Sirocco



Sirocco



Sirocco



Sirocco



Sirocco



Sirocco



Sirocco



Sirocco



Sirocco

Sirocco



Sirocco



Sirocco



CONTACTS

Andrey Shestakov, leading yacht broker of the sales department of Shestakov Yacht Sales Inc. Shestakov Yacht Sales Inc., the official representative of the Miami/Fort Lauderdale FL headquarters.

Contact details

Email: **andrey@shestakovyachtsales.com**

Web: shestakovyachtsales.com/en/

Telephones

USA: **+1(954)274-4435**

Office hours

Monday – Saturday: **9:00 - 21:00 EDT**

Sunday: **closed**

Address



Harbour Towne Marina, 850 NE 3rd St,
STE 213, Dania, FL 33004