

SUMMER WIND — MANTA



Builder: MANTA

LOA: 42' 0" (12.80m)

Year Built: 2003

Beam: 21' 0" (6.40m)

Model: Catamaran

Price: PRICE ON APPLICATION

Location: United States

Our experienced yacht broker, Andrey Shestakov, will help you choose and buy a yacht that best suits your needs **Summer Wind — MANTA** from our catalogue. Presently, at Shestakov Yacht Sales Inc., we have a wide variety of yachts available on our sale's list. We also work in close contact with all the big yacht manufacturers from all over the world.

If you would like to buy a yacht **Summer Wind — MANTA** or would like help answering any questions concerning purchasing, selling or chartering a yacht, please call **+1(954)274-4435**

TABLE OF CONTENTS

TABLE OF CONTENTS	2
SPECIFICATIONS	5
Overview	5
Basic Information	5
Dimensions	5
Speed, Capacities and Weight	6
Accommodations	6
Hull and Deck Information	6
Engine Information	6
DETAILED INFORMATION	7
Accommodations	7
Galley	8
Port Hull / Owner's Suite	9
Starboard Hull / Guest Staterooms / Guest Head	10
Electronics and Navigation Equipment Equipment	10
Electrical Equipment and Systems	11
Plumbing Systems	11
Construction	12
Deck Equipment and Features	12
Sails and Rigging	13
Mechanical Equipment and Engine Details	14
Safety Equipment	15
Exclusions	15
Exclusions	15
Disclaimer	15
PHOTOS	16
Salon TV and Locker	16
Salon / Dinette	16

Salon Nav Station	16
Salon Nav Station and Refrigerator / Freezer	16
Refrigerator / Freezer	17
U-Shaped Galley	17
Port Hull Entry with Bookcases	17
Galley Aft	17
Port Passageway Cabinetry	17
Port Master SR_Door Open	17
Port Passageway Cabinetry_Looking Aft	18
Port Master SR Double Berth	18
Port Master SR Cabinetry	18
Port Master SR_Two Opening Ports	18
Port Master SR Cabinetry	18
Port Hull Passageway	18
Starboard Hull Entry with Bookcase	19
Port Hull Owner's Head, Vanity and Shower	19
Starboard Passageway Storage_Looking Aft	19
Starboard Aft VIP SR Berth_Looking Aft	19
Starboard Aft VIP SR Seat & Cabinetry	20
Starboard Aft VIP SR and Aft Opening Port	20
Starboard Aft VIP SR & Opening Port	20
Starboard Aft VIP SR_Overhead Lighting	20
Starboard Aft VIP SR_Looking Forward	20
Starboard Head & Shower_Looking Forward	20
Starboard V-Berth	21
Starboard Hull V-Berth_Cabinetry	21
Starboard Hull V-Berth_Opening Port	21
Starboard V-Berth_Looking Aft	21
Starboard Hull Head and Vanity	21

Starboard Hull Shower Area	21
Cockpit Cabin Entry	22
Helm Area	22
Helm Station	22
Captain's Helm Seat	22
Cockpit Seating	22
Cockpit Seating and Storage Boxes	22
Cockpit Aft	23
Aft Cockpit Sling Seat	23
Port Side Forward Trampoline	23
Starboard Side Forward Trampoline	23
Port Engine	23
Starboard Engine	23
Bow View	24
Starboard Side Bow View	24
Port Side Bow View	24
CONTACTS	25
Contact details	25
Telephones	25
Office hours	25
Address	25

SPECIFICATIONS

Overview

PERFECT TURNKEY CRUISING CATAMARAN ...

"Summer Wind" is a beautiful 2003 42' Manta MKII. She is a true Bluewater proven turnkey Catamaran. She is in meticulous condition inside and out and has been continuously updated, upgraded and serviced to the highest standards. Her owners have made her as efficient and "green" as possible.

She has (NEW) 2014 Twin 30hp Yanmar Engines, and all NEW 2017 Sails, Sail Covers and Running Rigging.

She has all of the right options including: Roller Furling Spinnaker Package, Comfort Package, Offshore Anchor Package, Hard Top, Sling Seat, High Output Wind Generator, Portable Genset, (2) Water Makers, Dual Air Conditioning Systems, Dinghy Davit Pack, (6) 75 Watt Solar Panels for plenty of power.

Includes 10' 6" AB Hard Bottom Dinghy with 2015 15hp Yamaha Motor.

This vessel shows pride in ownership in every possible way and will please the most discriminating buyer. If you are in the market for an outstanding Catamaran This 42' Manta MkII Sail Catamaran is your vessel !!!

Basic Information

Category: Catamaran

Sub Category: Cruising Sailboat

Model Year: 2003

Year Built: 2003

Country: United States

Dimensions

LOA: 42' 0" (12.80m)

Beam: 21' 0" (6.40m)

Clearance: 59' 9" (18.21m)

Speed, Capacities and Weight

Displacement: 16500 Pounds

Accommodations

Total Cabins: 3

Total Heads: 2

Hull and Deck Information

Hull Material: Fiberglass

Hull Configuration: Catamaran

Engine Information

Engines: 2

Manufacturer: Yanmar

Engine Type: Sail Drive

Fuel Type: Diesel

DETAILED INFORMATION

Accommodations

Summer Wind, a 2003 Manta 42 MKII Sail Catamaran is a live-aboard cruising vessel that sleeps (6) comfortably in three staterooms. The Port Hull features the Owner's Master Stateroom with Head with separate shower and companionway pantry storage and bookcases. The Starboard Hull features an aft VIP Stateroom and a forward Guest Stateroom. A Guest Head is shared and a built-in bookcase lines the companionway. Salon / Dinette is open to the fully equipped Galley and includes a Nav Station.

- Interior finish is a blend of attractive surfaces.
- Canadian Maple woodwork.
- Varnished teak moldings.
- Vinyl headliner.
- Louvered teak doors.
- Highly durable synthetic teak and holly soles.
- Swanstone countertops.
- Screens and shades for all overhead interior hatches; translucent hatches provide light while protecting privacy.
- Screens and shades for all opening ports.
- 6' 2" Headroom in Salon, greater in Hulls.
- Low energy usage CFC fluorescent lighting throughout.
- 110V Outlets (powered by inverter or shore power) throughout.
- 6 Siemens Power Max™75 watt Solar Panels with power regulator.

Salon / Dinette / Nav Station

The Salon / Dinette / Nav Station of this 42 Manta MKII Sail Cat 2003 is open to the Galley and well lit with natural lighting.

- L-shaped settee with upholstery (NEW 2014).
- (2) Matching ottomans for additional seating with storage (NEW upholstery 2014).
- Adjustable table for dining or entertaining.
- Built-in wrap-around shelf above the settee.
- Ample storage / wet locker.
- Entertainment Center above locker.
- ASUS 19" flat screen TV.
- Clarion Marine AM/ FM/ CD Stereo.
- GlobalStar SAT phone.
- ACR EPIRB.
- Fire extinguisher.
- (2) Speakers in Cabin.

- Single 12V circulating fan.
- (2) Overhead opaque hatches with shades.
- Smoked Plexiglas Main cabin entry door with retractable screen.
- Large exterior louvers shade the (4) cabin windows ((2) forward and (1) each to port and starboard).
- Ample natural light through the main cabin door and the cabin windows.
- Custom entry Eisen step added 2013.

Nav Station

- Built-in desk with top lifts up to access the chart stowage compartment.
- Below is the electrical panel with the electrical cabinet behind.
- Vertical storage compartment with (3) shelves adjacent to the electrical cabinet.
- Standard/Horizon Spectrum VHF Radio with RAM Mic, GPS Interface, DSC and Loudhailer.
- Mastervolt Inverter Control Switch.
- MasterVolt Mass 12/80 auto battery charger with temperature sensing.
- RV SB50 Remote Display for the Solar Panel Current, Battery Voltage and Output Charge Current Readings.
- Xantrex Link Lite Battery Monitor.
- Zinc Saver II Galvanic Isolator.
- Spectra Water Maker MPC 3000 Controller.
- YachtGuard Surge Protection System.
- 12V Outlet.

Galley

U-shaped Galley of **Summer Wind** is open to the Salon / Dinette /Nav Station.

- Adler Barbour™ 10 cubic ft. 12-volt refrigeration/freezer, with digital thermostat/ thermometer, 6" Foam insulation.
- Force Ten (3) burner propane stove/oven with storage locker below and Swanstone cover.
- Trident gas control panel.
- Stove exhaust and fan.
- 12V Exhaust blower and remote solenoid shut off valve for propane.
- Whirlpool Microwave oven.
- Spacious white Swanstone countertop.
- Double stainless steel sink.
- Hot/cold water mixer faucet.
- Seagull water filter.
- Multiple white upper and lower cabinet storage and drawers with wood trim.
- Custom shelving under sink.
- Custom spice rack over the stove.

- Integrated trash bin built into countertop.
- Pots, pans, utensils, dishes and glasses.

Port Hull / Owner's Suite

Owner's Master Stateroom of this 2003 Manta 42 MKII Sail Catamaran is aft in the Port Hull. Private Head forward with full shower. Companionway with large double storage cabinet with shelves and teak louvered doors, single storage cabinet opposite with shelves and teak louvered door, bookshelves with retention rails and (1) screened opening port light.

- Queen-size fore-aft berth with custom mattress.
- Upholstered settee with storage bin.
- Large cedar-lined hanging locker with teak louvered double doors.
- Shoe storage locker below.
- (4) Storage drawers.
- Large storage cabinet with (2) shelves and double doors.
- Built-in teak shelves both by the berth and behind the cabin door.
- (2) Reading lamps.
- Overhead cabin light.
- 12V Circulating fan.
- Separate air conditioning vent and digital control panel.
- (2) Screened opening port lights.
- (1) Overhead opaque hatch with shade.

Master Head

- Quiet-flush fresh water electric marine toilet.
- Large vanity with Swanstone countertop, sink and storage below.
- Mirrored cabinet with double doors above sink.
- Large separate shower stall with shower head, water controller and **custom Plexiglas door**.
- (1) Screened opening port light.
- (1) Overhead opaque hatch with solar powered exhaust vent, shade.
- (1) 12V Circulating fan.
- Holding tank monitor.
- Fore-aft stainless steel handrail.

Port Companionway

- Custom outboard teak book and storage shelves.
- Custom outboard teak louvered storage cabinet.
- Inboard teak louvered pantry/storage cabinets.
- (1) Screened opening port light with shades.

Starboard Hull / Guest Staterooms / Guest Head

Summer Wind's VIP Stateroom is aft. The Guest Head can be accessed from the companionway or the Guest Stateroom forward. Large bookcase with retention rails in the companionway. The Starboard Hull interior of this well-maintained 2003 Manta 42 MKII Sailing Catamaran features:

Aft VIP Guest Stateroom

- Queen-size athwartship berth with custom mattress.
- Mini settee.
- Single cedar-lined hanging locker with a teak louvered door.
- Upholstered settee with storage bin.
- (4) Storage drawers.
- Reading lamps.
- 12V Circulating fan.
- Air conditioning vent.
- (2) Screened opening port lights.
- (1) Overhead opaque hatch.

Forward Guest Stateroom

- Single V-berth with mattress.
- Double storage cabinet forward with (2) shelves.
- Additional large storage cabinet.
- Overhead cabin light.
- (1) Screened opening port light.
- (1) Overhead opaque hatch with solar powered exhaust vent.
- 12V Circulating fan.

Guest Head

- Quiet-flush fresh-water electric marine toilet.
- Large vanity with Swanstone countertop, sink and storage below.
- Mirrored medicine cabinet.
- Separate large shower area with shower head, water controller and curtain.
- Holding tank monitor.
- (1) Screened opening port light.
- 12V Circulating fan.
- Fore-aft stainless steel handrail.

Electronics and Navigation Equipment

- Raymarine ST60 Tridata Speed / Depth / Log.

- Raymarine ST 60 Wind Speed / Direction Indicator.
- Raymarine ST6001 Plus Auto Pilot.
- Raynav 300 GPS / WAAS.
- Raymarine SL70C Color Radar / Chart Plotter.
- Watchmate AIS.
- Ritchie Navigator Binnacle Compass.
- (2) External Waterproof BOSE Speakers in Cockpit.
- (2) Speakers in Cabin.
- Clarion AM / FM / CD Stereo with Cockpit Control and 6-CD Changer.
- Glomex TV / Stereo Antenna Installed at Masthead.
- Standard/Horizon Spectrum VHF Radio with RAM MIC, GPS Interface, DSC and Loudhailer at Nav Station.

Electrical Equipment and Systems

- Hi-Output Wind Generator (NEW 2015).
- Paneltronics A/C-D/C electrical panel with digital meters.
- (6) House batteries (NEW 2015) with isolation switches.
- (2) 12V, Group 24 SeaVolt AGM Engine start batteries with isolation switches.
- Battery isolators with engine parallel switches.
- Xantrex Link Lite Battery Monitor.
- (6) Siemens 75 Watt solar panels with power regulator.
- MasterVolt 3-step alternator regulators with temperature sensing.
- MasterVolt Mass 12/80 auto battery charger with temperature sensing.
- Mastervolt 2000 Watt full sine wave inverter.
- Zinc Saver II Galvanic Isolator.
- 12V Taylorbrite CCF interior lighting.
- 12V LED courtesy lights in companionways.
- (6) 12V interior fans.
- (2) 12V solar ventilators.
- Lightning Protection System includes Strike Shield Lightning Ground and YachtGuard Surge Suppression.
- (2) 30 amp Shore power cords.
- (1) 50 amp Splitter.
- TV/Phone cord and receptacle are mid-ships to port.

Plumbing Systems

- Spectra Ventura 150 water maker, providing up to 6 gallons per hour of fresh water while using only 9 amps of 12 volt power, easily handled by the solar panels and wind generator.
- Secondary engine-driven 40 gal./hr. water maker (NEW 2014).

- Jabsco Sensor-max VSD 12V water pressure pump.
- Isotemp 110V 250 gal./day hot water heater with engine heat exchanger system.
- (2) Auto electric bilge pumps with float switches.
- Manual bilge pump.
- (2) Shower sumps with float switches.
- 100 gallon Baffled aluminum, 3/16" epoxy-coated freshwater tank with remote gauge and deck fitting.
- (2) PAR Quiet- flush freshwater electric marine toilets.
- (2) 20-gallon Polyethylene holding tanks with y-valves, level gauges, macerator pumps and deck fittings.
- Dockside water.

Construction

- Hull, deck and bulkheads constructed of triaxial, biaxial and unidirectional fiberglass with vinylester, isophthalic resins and Nida-core (polypropylene honeycomb) coring material.
- Vacuum bagged for stiffness, strength and light weight.
- Hull fastened to deck chemically and mechanically.
- Collision bulkheads with watertight compartments in bows.
- Deck hardware reinforced with aluminum plates molded into the layup.
- Twin fiberglass keels molded integrally with the hull.
- Twin high density foam/fiberglass rudders with 2" diameter solid stainless steel shafts.
- All thru-hulls and seacocks are non-corrosive Forespar Marelon.

Deck Equipment and Features

Includes 2003 10' 6" AB Hard Bottom Dinghy with 2015 15hp Yamaha Outboard Motor.

- Aluminum Radar Arch.
- Integral painted aluminum Hard Top with Bomar visibility hatch.
- Full forward Eisenglass enclosure with side panels port and starboard.
- Molded console with space for instrumentation and line bin at Helm.
- Bulkhead mounted stainless steel steering wheel with brake.
- Upgraded Todd Helm chair with foot rest.
- 20-lb. Propane bottle with gauge in vented locker under Helm seat.
- Taylorbrite CCF red / white light over Helm.
- L-shaped Cockpit seating with cushions (NEW 2014).
- Cockpit table with storage bracket.
- (2) Taylorbrite CCF Cockpit lights.
- Handheld spotlight with 12V outlet in Cockpit.

- (3) Fiberglass storage boxes in aft Cockpit.
- **Optional aft sling seat.**
- Parker Gas Grill plumbed to main propane tank.
- (4) Large foredeck lockers with locking hatches.
- Bomar companionway door with locking handle.
- Roll-away companionway screen door.
- Vinyl coated polyester mesh trampoline.
- Polycast 3/8" acrylic tinted Salon windows with removable fiberglass louvers.
- Bomar opening hatches with screens.
- Maxwell VWC 1200 12V electric anchor windlass with reversing capstan and gypsy.
- Stainless steel anchor roller.
- Anchor chain locker.
- Deck shield anchor chain guard.
- 5/8" x 20' Shock absorption bridle line with chain hooks.
- 44 Lb. Delta self-stowing anchor with stainless steel anchor swivel.
- 120' ACCO galvanized 5/16" HT Chain.
- Fortress FX-20 aluminum anchor with 150' rode and 20' 5/16" galvanized HT chain.
- Manson Supreme anchor and 200' chain (NEW 2015).
- 12V Saltwater anchor wash down.
- Hot and cold deck shower.
- Freshwater wash down at stern.
- Stainless steel corner bow rails with integral seats.
- 28" Stainless steel stanchions.
- Double lifelines with boarding gates mid-ship port and starboard and aft.
- (7) 12" Stainless steel cleats (bow, stern, spring and anchor).
- Stainless steel transom, stern boarding, cabin top and Cockpit rails.
- Molded non-skid on all deck surfaces.
- Navigation running lights.
- Combination Anchor/ Tri-Color masthead light.
- Combination steaming/ foredeck light with stainless steel guard.
- Dinghy Davit PAC with (2) Harken 6:1 lifting tackle.
- **BOTTOM PAINT 2017.**

Sails and Rigging

This ready-to-cruise 42 Manta MKII Sail Cat 2003, features updated Sails, Covers and running rigging (NEW, December 2017).

- Doyle full batten main and jib sails (NEW 12/2017).
- Sail covers (NEW 12/2017).
- Running rigging (NEW 12/2017).
- Standard rigging inspected and upgraded (2014).
- Sail track on the mast was replaced (June, 2007).

- Custom boom crutch was fabricated, making it easier and safer to cover the sails and stopping side-side movement of the boom while underway with the sails furled (June, 2007).
- Lazy Jacks mounted to spreaders and boom basket.
- Garhauer adjustable boom vang.
- Dutchman Boom Brake.
- Main and Jib Halyards (New England T-900) mainsheet and jib sheet (New England Sta-set) led to Helm through deck organizer to deck stoppers and Harken 44 2-speed self-tailing electric winch.
- Extra main halyard (New England Sta-set).
- Jib downhaul system.
- (2) Winch handles.
- Awfgrip painted aluminum mast and boom.
- All running rigging color coded and labeled.
- Extra line bag at Helm.
- AH running hardware by Harken.
- Self-tacking, full batten 8.3 oz. High modulus Dacron jib with CamberSpar, jib cover, topping lift and lazy jack.
- Roller Furling Spinnaker PAC.
- Adjustable bridle system from Cockpit with New England Ropes Sta-Set X spinnaker halyard.
- (2) Lead blocks.
- (2) Snatch blocks.
- New England Ropes Sta-Set spinnaker sheets.
- Harken 42 2-Speed Self-tailing manual winch in Cockpit.
- Harken 16 single speed winch at mast.
- Custom Spinnaker turtle.
- Facnor SDG200PG roller furling system.

Mechanical Equipment and Engine Details

- Twin 30hp Yanmar Diesel Engines - 1400 hours.
- Volvo Penta Sail drives (Port Sail drive NEW 2014).
- Lewmar pull-pull cable steering system.
- Emergency tiller.
- Engine room blowers.
- 60 amp Alternators.
- Hi-Output alternator added to Port Engine (2013) to accommodate secondary engine-driven water maker.
- Engine control panels in Cockpit.
- Single lever Volvo Penta shift/throttles.
- Racor fuel filters (2013).
- Puratec fuel purification system.

- Reverso oil change pumps on each engine.
- 3-Blade folding props.
- (2) CruiseAir air conditioning systems with reverse cycle and digital thermostats (16,000 BTU unit serves the main Salon; 10,000 BTU unit serves the two aft cabins)
- A baffled, 3/16" epoxy-coated aluminum fuel tank with remote gauge and deck fittings. Extra aluminum propane tank and bracket. White painted Engine compartments.
- White painted Engine compartments.

Safety Equipment

- (1) EPIRB.
- (2) Individual EPIRBS and vests.

Exclusions

- Personal items.

Exclusions

Owner's personal belongings.

Disclaimer

The Company offers the details of this vessel or yacht in good faith but cannot guarantee or warrant the accuracy of this information nor warrant the condition of the vessel. A buyer should instruct his representatives, agents, or his surveyors, to investigate such details as the buyer desires validated. This vessel or yacht is offered subject to prior sale, price change, or withdrawal without notice.

PHOTOS

Salon / Dinette



Salon TV and Locker



Salon Nav Station



Salon Nav Station and Refrigerator / Freezer



Refrigerator / Freezer



U-Shaped Galley



Port Hull Entry with Bookcases



Galley Aft



Port Passageway Cabinetry



Port Master SR_Door Open



Port Passageway Cabinetry_Looking Aft



Port Master SR Double Berth



Port Master SR Cabinetry



Port Master SR_Two Opening Ports



Port Master SR Cabinetry



Port Hull Passageway



Port Hull Owner's Head, Vanity and Shower



Starboard Hull Entry with Bookcase



Starboard Passageway Storage_Looking Aft

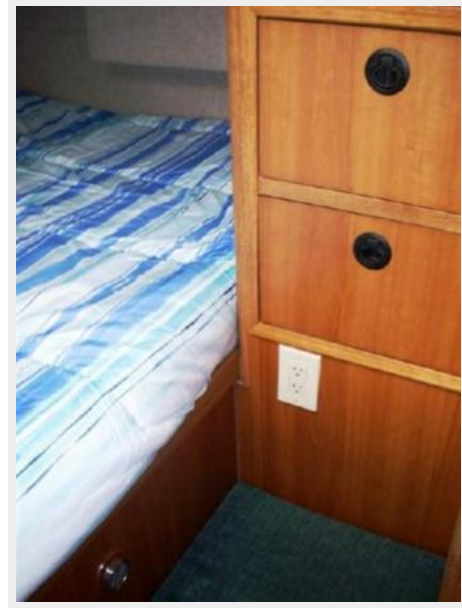


Starboard Aft VIP SR Berth_Looking Aft

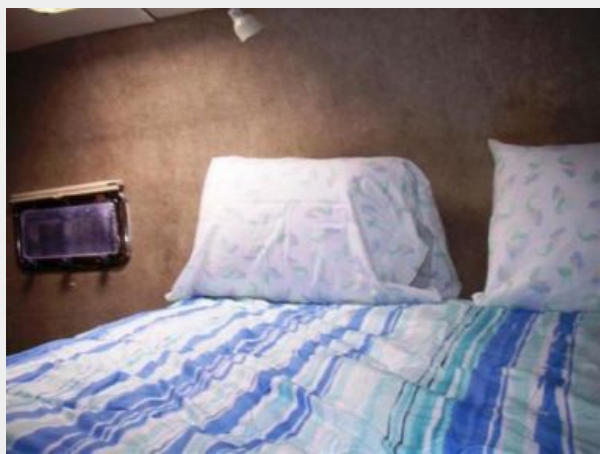


Starboard Aft VIP SR Seat & Cabinetry

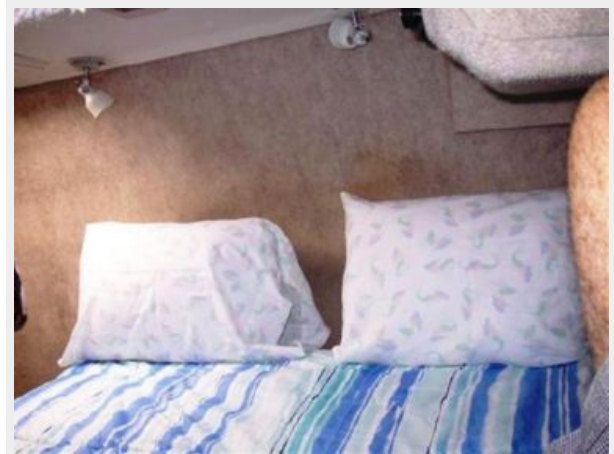
Starboard Aft VIP SR and Aft Opening Port



Starboard Aft VIP SR & Opening Port



Starboard Aft VIP SR_Overhead Lighting



Starboard Aft VIP SR_Looking Forward



Starboard Head & Shower_Looking Forward



Starboard V-Berth



Starboard Hull V-Berth_Cabinetry



Starboard Hull V-Berth_Opening Port



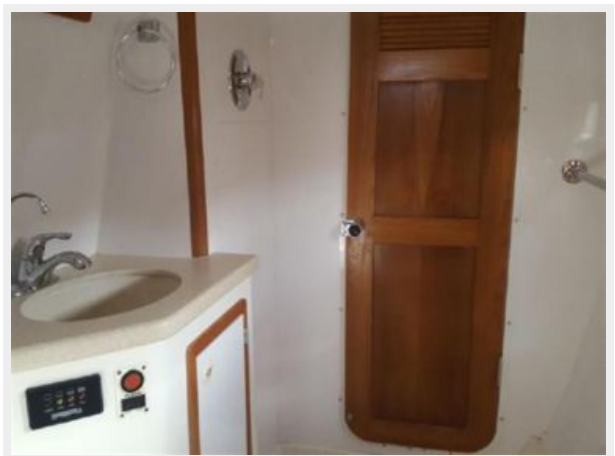
Starboard V-Berth_Looking Aft



Starboard Hull Head and Vanity



Starboard Hull Shower Area



Cockpit Cabin Entry



Helm Area



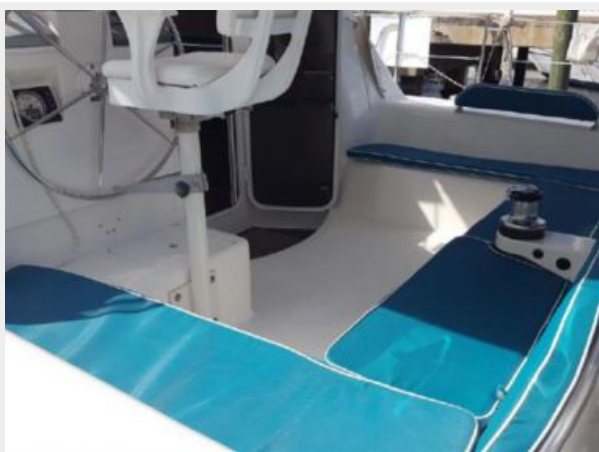
Helm Station



Captain's Helm Seat



Cockpit Seating



Cockpit Seating and Storage Boxes



Cockpit Aft



Aft Cockpit Sling Seat



Port Side Forward Trampoline



Starboard Side Forward Trampoline



Port Engine



Starboard Engine



Bow View



Starboard Side Bow View



Port Side Bow View



CONTACTS

Andrey Shestakov, leading yacht broker of the sales department of Shestakov Yacht Sales Inc. Shestakov Yacht Sales Inc., the official representative of the Miami/Fort Lauderdale FL headquarters.

Contact details

Email: andrey@shestakovyachtsales.com

Web: shestakovyachtsales.com/en/

Telephones

USA: +1(954)274-4435

Office hours

Monday – Saturday: **9:00 - 21:00** EDT

Sunday: **closed**

Address



Harbour Towne Marina, 850 NE 3rd St,
STE 213, Dania, FL 33004