

BEAZUR — OFFSHORE YACHTS



Судостроитель: OFFSHORE YACHTS

Год постройки: 1999

Модель: Моторная яхта

Цена: ЦЕНА ЯХТЫ ПО ЗАПРОСУ

Местонахождение: United States

Длина общая: 48' 0" (14.63m)

Ширина: 15' 6" (4.72m)

Макс. осадка: 5' 0" (1.52m)

Купить BeAzUr — OFFSHORE YACHTS а также выбрать подходящую вам яхту из нашего каталога яхт вам поможет опытный яхтенный брокер Андрей Шестаков. На сегодняшний день компания Shestakov Yacht Sales Inc. имеет большое количество яхт в собственном списке продаж, а также тесно сотрудничает со всеми крупными яхтенными производителями по всему миру.

Для того чтобы купить яхту BeAzUr — OFFSHORE YACHTS а также проконсультироваться по любому вопросу связанному с покупкой, продажей, чартером яхт позвоните по телефону **+7(918)465-66-44**.

ОГЛАВЛЕНИЕ

ОГЛАВЛЕНИЕ	2
ХАРАКТЕРИСТИКИ	4
Обзор	4
Основная информация	4
Размеры	4
Скорость, вместимость и масса	4
Размещение	5
Корпус и палуба	5
Информация о двигателе	5
ПОДРОБНОЕ ОПИСАНИЕ	6
Galley	6
Salon	6
Master Stateroom	6
Master Head	6
Guest Stateroom	6
Mechanical Systems	7
Pilothouse	7
Flybridge	7
Flybridge Helm	7
Helm	7
Cockpit	7
Recent Upgrades	8
Исключения	8
Отказ от ответственности	8
ФОТОГРАФИИ	9
КОНТАКТЫ	14
Контактная информация	14
Телефоны	14

Время работы	14
Адрес	14

ХАРАКТЕРИСТИКИ

Обзор

A very well-designed cruising boat for the serious coastal and/or offshore cruiser. This model features very wide protected side decks with tall bulwarks and secure railings all the way around and an overhang from the pilothouse aft including the forward portion of the cockpit. This vessel can be entered from the cockpit directly into the salon or from the side decks (port and starboard) directly into the raised pilothouse. The large flybridge can be reached from the cockpit via a ladder through a hatch in the overhead or from inside the pilothouse. The flybridge has a forward helm station on the centerline with full electronics and (2) helm chairs. She has a wet bar with refrigerator and large cabinet, an L-shaped settee with table and a large deck space aft for dinghy storage.

Основная информация

Тип судна: Моторная яхта

Подкатегория: Pilothouse

Модельный год: 1999

Год постройки: 1999

Страна: United States

Верх: Bimini Top

Открытая палуба мостика: Да

Размеры

Длина общая: 48' 0" (14.63m)

Ширина: 15' 6" (4.72m)

Макс. осадка: 5' 0" (1.52m)

Скорость, вместимость и масса

Водоизмещение: 52000 Pounds

Вместимость воды: 275 Gallons

Вместимость сточного бака: 50 Gallons **Объем топливного бака:** 600 Gallons

Размещение

Всего кают: 2

Всего ком. состава: 2

Корпус и палуба

Материал корпуса: Fiberglass

Информация о двигателе

Двигатели: 2

Производитель: Cummins

Тип двигателя: Inboard

Тип топлива: Diesel

ПОДРОБНОЕ ОПИСАНИЕ

Galley

The galley is forward of and open to the salon to port with a complementing bar area to starboard. There is an abundance of storage in cabinets and drawers. The location of the galley provides easy access to the salon and plenty of light from the large opening side windows: • Corian countertops • Double bowl S.S. sink • Sharpe carousel microwave oven • Electric Princess 3-burner stove w/oven • Intercom system • Under counter refrigerator • Under counter freezer w/ice maker • Water filtration system • Hatch in sole to engine room

Salon

Located aft with sliding door to cockpit. She features a U-shaped settee to port with a teak expandable high/low table. The settee can convert to a large double berth for additional sleeping. The entertainment center is aft to starboard with a TV, stereo and DVD player. Two barrel chairs are placed to port. • U-Shape Settee/Converts to Berth • Teak Expandable High/Low Table • Entertainment Center • Samsung TV • Yamaha Stereo • 12 Overhead Lights • 2-Barrel chairs • Window Treatments & Blinds • AC/Reverse Heat (Marine Air) • (3) Wall Lamps, brushed nickel • Large opening tinted windows

Master Stateroom

The master stateroom is located aft under the pilot house and has a queen size athwartships berth. The storage rivals many homes with tall banks of built-in drawers, double door hanging locker, washer/dryer, and a large head. The owners will be quite comfortable on extended voyages. • 8 Deep drawers on aft bulkhead • 4 Drawers under berth • Combo washer/dryer in locker • (2) Ports in head • AC Heat • Panasonic TV • Large hanging locker • 2-Opening ports • Bedside tables w/storage • 2-Reading lamps w/dimmers • Splendide Washer/Dryer

Master Head

• Medicine Cabinet • 5-Drawer Storage • 2-Cabinets • VacuFlush Toilet • Separate Shower

Guest Stateroom

The guest stateroom is forward and is very spacious with plenty of light, ventilation and storage. The head is shared as the day head and features doors to both. The head has full stall shower, a curved vanity top w/sink and a VacuFlush toilet. • Overhead hatch • 2-Opening ports • Access to Private Head w/ VacuFlush Toilet, Sink, Storage and Separate • Shower • 2-Hanging lockers • Filler and filler cushion for V-Berth • Teak & Holly Sole • Intercom

Mechanical Systems

• Heart freedom 30 inverter • C-power Iso-boost 50 power transformer • Walker Air seps, new 2018 • Northern Lights 12Kw generator • MarineAir air conditioning, 4-Units • Maxwell 2200 windlass • 2-Sealand VacuFlush heads • 12V fresh water pump • 110V Fresh water pump

Pilothouse

The raised pilot house is command central. The pilot house is located forward of the galley and 3-steps up. There are sliding doors to port and starboard, stairway to the flybridge, steps down to the galley/salon and a curved stairway down to the staterooms and heads. The layout features a centerline helm with teak and S.S. wheel and a full complement of electronics. There are 2-swivel helm chairs as well as a matching leather settee on the aft bulkhead with a drop leaf teak table. There is a functional chart table with plenty of storage to port. The visibility is excellent which makes for a good place to operate in inclement weather. • Overhead hatch • Chart table w/storage • AC and DC electrical distribution panels • Hatch to bridge for ventilation/communication. • Storage cabinets • Bookcase • Intercom • Engine controls and instrumentation • Full electronics

Flybridge

• MarQuipt Crane • Cradles for Tender • Wet Bar w/Sink • Norcold Refrigerator & Freezer • L-Shape Settee w/Table & Covers • Helm & Companion Chairs & Covers • Radar Arch

Flybridge Helm

• Full VDO Gauges • Ritchie Compass • Raymarine chart plotter (new 2014) • Raymarine digital color radar (new 2014) • Simrad AP20 Auto Pilot • Standard Marine VHF with • Trim Tab Controls • Bow Thruster • Remote Spot Light • Kenwood stereo/Bluetooth, XM (new 2018)

Helm

• Full VDO Gauges • Ritchie compass • Simrad AP20 Auto Pilot interfaced with chart plotter • Raymarine chart plotter (new 2014) • Standard marine VHF with AIS interfaced to chart plotter • Radar on chart plotter • New Airmar Transducer, 2018 • Trim Tab Controls (Bennett) • Bow Thruster • Heart Inverter • AC/Reverse Heat Controls • Large Chart Table w/Underneath Storage

Cockpit

• Steering/Control Station/Bow thruster • Raw Water Washdown • Fresh Water Washdown • Hot & Cold Shower • Fresh Water In-Take • Flood Lights • 50-Amp Receiver • TV/Phone Receiver •

2-Rod Holders • Large Storage In-Sole • Transom Door

Recent Upgrades

New soft goods Hull paint Topside paint (3) AC units, new 2017 All new/upgraded electronics, 2014 New flat screen TV's, Samsung salon and master New LED lighting New sconces Intellian satellite TV along with electronics XM weather module hooked-up to Raymarine All windows re-caulked when painted All port holes polished and re-bedded, 2 hatch covers removed, polished and rebedded, 2014 New refrigerator/freezer, 2017 Soft goods up top New teak arm rests New electronics upstairs New canvas up top New canvas covers on everything outside Mantis anchor, new 250' chain 1 w/35 Water heater with heat exchanger New bottom sand blasted and new, 2018 Epoxy bottom and bottom paint Buffed hull Icemaker in freezer Refrigerator on top in flybridge 12-Volt water pump and tank 110-Volt water pump replaced New flybridge stereo with XM Brand new lifeline main batteries Bow thruster New lifeline 24-volt battery Electric oven and range Filtered water system at sink New plumbing in cockpit Fireboy fire suppression system, 2018 New watermaker, never used/Seawater Pro

Исключения

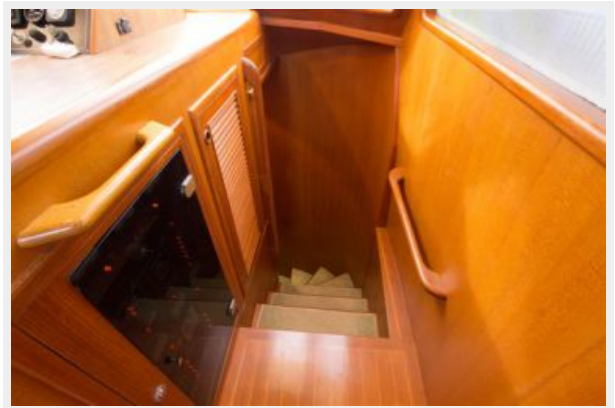
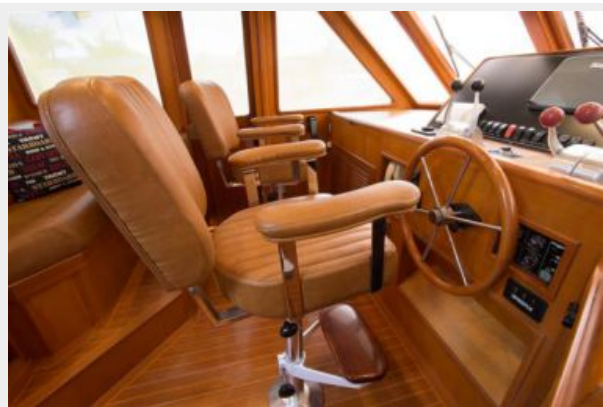
При продаже яхты исключаются личные вещи владельца.

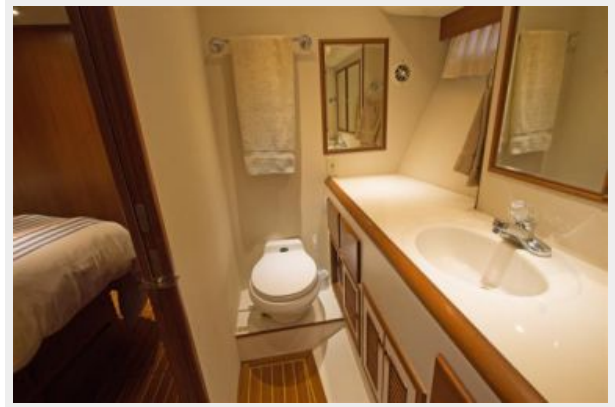
Отказ от ответственности

Компания предоставляет описание судна или яхты добросовестно, но не может гарантировать точность этой информации, а также не ручается за техническое состояние. Покупатель должен проинструктировать своих агентов или оценщиков исследовать представленную информацию более подробно, по собственному желанию. Продажа судна или яхты, изменение цены или снятие с продажи будет происходить без предварительного уведомления.

ФОТОГРАФИИ











КОНТАКТЫ

Андрей Шестаков (Andrey Shestakov) – ведущий яхтенный брокер отдела продаж яхт и судов компании Shestakov Yacht Sales Inc. Официальный представитель Shestakov Yacht Sales Inc. для русскоговорящих клиентов в центральном офисе компании в Майами/Форт Лодердейл/Флорида/США.

Контактная информация

Email: andrey@shestakovyachtsales.com

Web: shestakovyachtsales.com

Телефоны

Краснодарский край: **+7(918)465-66-44**

США, Майами, Флорида: **+1(954)274-4435**

Время работы

Понедельник – Суббота: **9:00 - 21:00**
EDT

Воскресенье: **Закрито**

Адрес



Harbour Towne Marina, 850 NE 3rd St,
STE 213, Dania, FL 33004