

## NO NAME 61 HATTERAS — HATTERAS



**Builder:** HATTERAS

**Year Built:** 1981

**Model:** Motor Yacht

**Price:** PRICE ON APPLICATION

**Location:** United States

**LOA:** 61' 0" (18.59m)

**Beam:** 18' 2" (5.54m)

**Max Draft:** 4' 11" (1.50m)

**Cruise Speed:** 15 Kts. (17 MPH)

**Max Speed:** 18 Kts. (21 MPH)

Our experienced yacht broker, Andrey Shestakov, will help you choose and buy a yacht that best suits your needs **NO NAME 61 HATTERAS — HATTERAS** from our catalogue. Presently, at Shestakov Yacht Sales Inc., we have a wide variety of yachts available on our sale's list. We also work in close contact with all the big yacht manufacturers from all over the world.

If you would like to buy a yacht **NO NAME 61 HATTERAS — HATTERAS** or would like help answering any questions concerning purchasing, selling or chartering a yacht, please call **+1(954)274-4435**

---

# TABLE OF CONTENTS

---

TABLE OF CONTENTS	2
SPECIFICATIONS	4
Overview	4
Basic Information	4
Dimensions	4
Speed, Capacities and Weight	4
Hull and Deck Information	4
Engine Information	5
DETAILED INFORMATION	6
Dimensions	6
Engines	6
Tanks	6
Accommodations	6
Galley	6
Dining	6
Crew Quarters	7
Laundry Room	7
Aft Deck	7
Cockpit	7
Audio Visual Equipment	7
Electronics & Navigation	8
Electrical	8
Deck Equipment	8
Fire & Safety Equipment	9
Engine Room/Mechanical	9
Tenders	9
Exclusions	9
Disclaimer	9

---

PHOTOS	10
Salon	10
Salon	10
Salon	10
Galley	10
Master Stateroom	10
Master Stateroom	10
Master Stateroom Head	11
VIP Stateroom	11
VIP Stateroom Head	11
Crew Quarters	11
Crew Head	11
Pilothouse	11
Bow View	12
Bow Seating	12
Flybridge	12
Flybridge Seating	12
Aft Deck	12
Aft Deck	12
Life Raft	13
Port Engine	13
Starboard Engine	13
At the Dock	13
CONTACTS	14
Contact details	14
Telephones	14
Office hours	14
Address	14

---

# SPECIFICATIONS

---

## Overview

---

OWNER WILL CONSIDER SMALLER BOATS IN TRADE

## Basic Information

---

**Category:** Motor Yacht

**Model Year:** 1981

**Year Built:** 1981

**Country:** United States

## Dimensions

---

**LOA:** 61' 0" (18.59m)

**Beam:** 18' 2" (5.54m)

**Max Draft:** 4' 11" (1.50m)

## Speed, Capacities and Weight

---

**Cruise Speed:** 15 Kts. (17 MPH)

**Max Speed:** 18 Kts. (21 MPH)

**Max Speed RPM:** 650 Kts.

**Displacement:** 85000 Pounds

**Water Capacity:** 350 Gallons

**Fuel Capacity:** 1150 Gallons

## Hull and Deck Information

---

**Hull Material:** Fiberglass

---

## Engine Information

---

**Engines:** 2

**Manufacturer:** Detroit Diesel/Allison

**Model:** 12V71TI

**Engine Type:** Inboard

**Fuel Type:** Diesel

---

## DETAILED INFORMATION

---

### Dimensions

---

Displacement: 85000

### Engines

---

Total Power: 650 Cruising Speed: 15 Max Speed: 18

### Tanks

---

Fuel: 1150 Fresh Water: 350

### Accommodations

---

From the aft deck, the salon is entered through double doors and is aft of the pilothouse. The sofas and chairs have new coverings and floors and carpet are new. The pilothouse has an aft bench seating and 360 degree views of the vessel. Down and forward of the pilot house is the galley with dinette seating. Forward of the galley is the crew cabin and head. Down and aft of the galley is the VIP double berth stateroom with VIP head. Aft of the guest stateroom are the two soundproofed engine rooms separated by a companionway to the owner's master stateroom. The master stateroom has a walkaround queen berth with large private bath and a large walk in closet.

### Galley

---

- Corian Countertops
- Magic Chef Full Size Refrigerator
- Panasonic Dimension 4 Microwave/Convection Oven
- Modern Maid Full Size 4-Burner Stove and Oven
- Deep Sink
- Black & Decker Spacemaker Continuous-Cleaning Toaster Oven
- Black & Decker Thermal Carafe Coffee Maker
- Black & Decker ProBlend Blender

### Dining

---

The vessel offers three options for dining. A dinette adjoining the galley seats 6 and is nice for informal meals. Decidedly more up-market, the aft deck offers dining for 8 as well as fresh air and

panoramic views of the waterscape. Finally, the sundeck on the flybridge offers the ultimate in brunch settings for up to 10 guests and boasts fabulous views as well.

---

## Crew Quarters

---

The roomy crew cabin offers berthing for two on bunks and a spacious private head and shower, as well as plenty of storage space and easy access to the anchor locker and other maintenance areas of the vessel.

---

## Laundry Room

---

- Custom Laundry Cabinet
- Stackable Washer and Dryer

---

## Aft Deck

---

The fully furnished aft deck is among the most pleasant spaces on the vessel. Great for entertaining, the aft deck is ideal for dining or casual cocktails served from a full wet bar, refrigerator, and ice maker. The aft deck offers access up to the flybridge and sundeck, as well as down to the spacious cockpit. The aft deck also boasts a third helm station used primarily for backing the ship into tight spaces.

---

## Cockpit

---

One of the aspects of the 61' Hatteras that makes it so unique is its fully functional cockpit at the water line. Perfect for swimming, launching watercraft, or reeling in a trophy marlin, the spacious cockpit is ideal for the yachtsman that insists on being a part of the action!

---

## Audio Visual Equipment

---

- SALON ENTERTAINMENT:
  - JVC 27" Television
  - JVC 3-Disc CD/DVD Player
  - JVC RX-8010V Stereo Receiver
  - Sony Twin Cassette Player/Recorder
  - Sony VCR
  - Speakers wired throughout the Salon
- CREW QUARTERS: Mitsubishi 19" Television
- VIP STATEROOM: LXI 13" Television & VCR
- MASTER STATEROOM: Apex 21" Television

---

## Electronics & Navigation

---

- PILOTHOUSE ELECTRONICS:
  - SEA Single Sideband Radio
  - Raytheon 48-Mile Radar System
  - Raytheon RL70 Pathfinder Radar/GPS Chartplotter
  - Datamarine Depth Sounder
  - Sandpiper SL Speed & Log
  - Simrad Autopilot with Remote
  - ICOM IC-M127 Fixed VHF Radio
  - Humminbird Hand-Held VHF Radio
  - Fixed Compass
  - Rudder Position Indicator
  - Panasonic Telephone System
  - Newmar Phonecom Ship's Intercom System
- FLYBRIDGE ELECTRONICS:
  - Raytheon RL70 Pathfinder Radar/GPS Chartplotter
  - Standard Fixed VHF Radio
  - Rudder Position Indicator
  - Jensen MCD-5110 Stereo/CD Player

---

## Electrical

---

- 32 volt Main Engine Batteries
- 12 volt Generator Batteries
- 20 Kilowatt Kohler Generator
- 21 Kilowatt Phasor Generator
- (2) 50 amp 220V/110 Single Phase Shore Power Inputs
- 5-Zone Air Conditioning System

---

## Deck Equipment

---

- Galley Maid Windlass System
- 2 Anchors
- 1,000 pound Marquipt Davit System
- 5-Step Marquipt Boarding Ladder with Varnished Rail
- 4-Step Marquipt Side Ladder
- Fender Holders
- Complete Topside Paint Job Completed 2003
- New Bow and Flybridge Cushions



---

## Fire & Safety Equipment

---

- Smoke and Heat Detectors Throughout
- Fire Extinguishers Throughout
- USCG Safety Package
- First Aid Equipment
- Flares
- 8-Man Life Raft

---

## Engine Room/Mechanical

---

- Both 12V71TI Engines underwent major overhaul and were zero-timed in 2002, 500 hrs. SMOH
- NAIAD Stabilizers
- Racor Fuel Filtration System
- Hynautic Steering System
- DeAngelo Exhaust System
- Kidde Halon Fire Supression System
- Hatteras Holding Tank
- Galley Maid Vacu-Flush Head System
- Village Watermaker
- Fresh Water System with Filtration

---

## Tenders

---

- 11' Boston Whaler with Outboard Motor

---

## Exclusions

---

Owner's personal belongings.

---

## Disclaimer

---

The Company offers the details of this vessel or yacht in good faith but cannot guarantee or warrant the accuracy of this information nor warrant the condition of the vessel. A buyer should instruct his representatives, agents, or his surveyors, to investigate such details as the buyer desires validated. This vessel or yacht is offered subject to prior sale, price change, or withdrawal without notice.

# PHOTOS

Salon



Salon



Salon



Galley



Master Stateroom



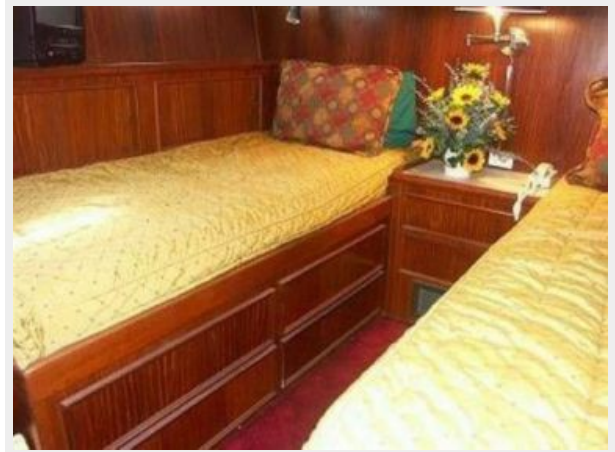
Master Stateroom



**Master Stateroom Head**



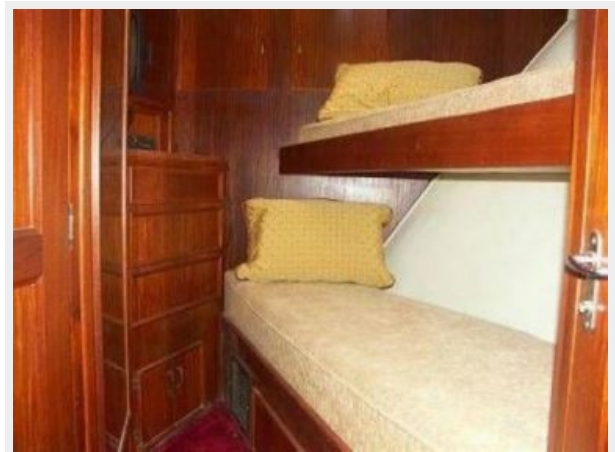
**VIP Stateroom**



**VIP Stateroom Head**



**Crew Quarters**



**Crew Head**



**Pilothouse**



**Bow View**



**Bow Seating**



**Flybridge**



**Flybridge Seating**



**Aft Deck**



**Aft Deck**



**Life Raft**



**Port Engine**



**Starboard Engine**



**At the Dock**



# CONTACTS

---

Andrey Shestakov, leading yacht broker of the sales department of Shestakov Yacht Sales Inc. Shestakov Yacht Sales Inc., the official representative of the Miami/Fort Lauderdale FL headquarters.

## Contact details

---

Email: [andrey@shestakovyachtsales.com](mailto:andrey@shestakovyachtsales.com)

Web: [shestakovyachtsales.com/en/](http://shestakovyachtsales.com/en/)

## Telephones

---

USA: +1(954)274-4435

## Office hours

---

Monday – Saturday: **9:00 - 21:00** EDT

Sunday: **closed**

## Address

---



Harbour Towne Marina, 850 NE 3rd St,  
STE 213, Dania, FL 33004