

LE SIRENUSE — BENETEAU



Builder: BENETEAU

Year Built: 2007

Model: Cruising Sailboat

Price: PRICE ON APPLICATION

Location: United States

LOA: 49' 0" (14.94m)

Beam: 14' 9" (4.50m)

Max Draft: 5' 9" (1.75m)

Our experienced yacht broker, Andrey Shestakov, will help you choose and buy a yacht that best suits your needs **Le Sirenuse — BENETEAU** from our catalogue. Presently, at Shestakov Yacht Sales Inc., we have a wide variety of yachts available on our sale's list. We also work in close contact with all the big yacht manufacturers from all over the world.

If you would like to buy a yacht **Le Sirenuse — BENETEAU** or would like help answering any questions concerning purchasing, selling or chartering a yacht, please call **+1(954)274-4435**

TABLE OF CONTENTS

TABLE OF CONTENTS	2
SPECIFICATIONS	5
Overview	5
Basic Information	5
Dimensions	6
Speed, Capacities and Weight	6
Accommodations	6
Hull and Deck Information	6
Engine Information	6
DETAILED INFORMATION	7
Keel Details	7
Manufacturer Provided Description	7
Electronics	7
Exclusions	7
Disclaimer	7
PHOTOS	8
Starboard side	8
Manufacturer Provided Image	8
Deck looking aft	8
Ports side forward view	8
Fore deck with sail locker	8
Roller furling Genoa	8
Sail locker in the fore deck	9
Lewmar Anchor windless	9
Cockpit view	9
Arch with KVH satellite TV antenna	9
Port side steering station with i70 Raymarine Multi and i60 Wind	10
Stainless arch	10

Raymarine 12"Axiom in cockpit	10
Starboard steering station	10
Starboard steering station i70 Multi and auto pilot	10
Starboard electric maneuvering winch	10
Port side electric maneuvering winch	11
Cockpit table and large cockpit area	11
Deep locker in cockpit	11
Chart table	11
Chart table	11
Starboard settee with leather upholstery	11
Galley zincs with covers for more working space	12
View from the galley	12
Galley	12
Like new never used stove	12
Never used stove	12
Microwave	12
Large freezer	13
VitroVrigo refrigerator	13
Salon table	13
Salon Table extended	13
Salon table	13
Galley counter with lots of working space	13
For ward stateroom queen size berth	14
Queen size berth in Forward stateroom	14
Head with separate shower for forward state room	14
Separate shower	14
Forward stateroom door to main cabin closed	14
Forward stateroom hanging closed	14
Aft head and shower access from main cabin and aft stateroom	15

Forward stateroom vanity	15
Aft shower	15
Aft cabin desk and hanging locker	15
Aft cabin queen size berth	15
Ice maker in aft cabin	15
Aft cabin	16
Yanmar 76HP front access	16
Engine Yanmar 76HP	16
Yanmar 76HP	16
Delta 44LBS never used	16
CONTACTS	17
Contact details	17
Telephones	17
Office hours	17
Address	17

SPECIFICATIONS

Overview

"Le Sirenuse" is a 2 cabin 2007 Beneteau 49, she is a one owner boat with very little use. The Force10 stove and oven was never used and the 76HP Yanmar engine has only 91 hours on it. The factory installed Westerbeke 7.6 KW generator has only 64 hours on it. The boat was in the yard for some repair work after Irma, the bottom was freshly painted and an engine service completed in April 2018. A survey of the repairs done is available on request for qualified buyers.

- Stainless Arch with Davits
- New ice maker in 2017
- KVH 4 satellite TV antenna
- Bose sound system
- TV on electric lift
- New 2018 Raymarine Axiom 9" MFD at chart table
- New 2018 Raymarine Axiom 12" MFD in cockpit
- New 2018 Raymarine i70 Multi and i60 Wind at port steering station
- New 2018 Raymarine i70 Multi at starboard engine

- AGM Batteries: 4X4D replaced in 2016 and 3 XGR27 replaced in 2016
- Electric Lewmar #64 Primary winches and 2X #46 Electric maneuvering winches on the cabin top.
- Max 3 bladed feathering prop
- Bow Thruster
- Stainless Magma Grill never used still in box
- Spare 44 LBS Delta anchor never used
- Many spare parts

Basic Information

Category: Cruising Sailboat

Model Year: 2007

Year Built: 2007

Country: United States

Dimensions

LOA: 49' 0" (14.94m)

LWL: 43' 8" (13.31m)

Beam: 14' 9" (4.50m)

Max Draft: 5' 9" (1.75m)

Clearance: 63' 6" (19.35m)

MFG Length: 49' 7" (15.11m)

Speed, Capacities and Weight

Displacement: 28517 Pounds

Water Capacity: 75 Gallons

Holding Tank: 44 Gallons

Fuel Capacity: 126 Gallons

Accommodations

Total Cabins: 2

Total Berths: 4

Total Heads: 2

Hull and Deck Information

Hull Material: Fiberglass

Hull Configuration: Monohull

Engine Information

Engines: 1

Manufacturer: Yanmar

Model: 4JH4-TE

Engine Type: Inboard

Fuel Type: Diesel

DETAILED INFORMATION

Keel Details

Keel #1 Keel Type: Shoal_Draft Max Draft: 5.75 ft

Manufacturer Provided Description

The Beneteau 49 represents an era of truly exceptional Beneteau sailing yachts. The profile and look of the hull and deck, designed by Berret/Racoupeau, were modernized while retaining the major assets that have made Beneteau yachts admired for decades. Below decks, Nauta drew strikingly beautiful lines combined with brilliant woodwork, and superb materials to bring the Beneteau 49 to a fresh level of interior luxury.

Electronics

12" Raymarine Axiom MFD in the cockpit new 2018

9" Raymarine Axiom MFD at the Chart table new 2018

i70 Raymarine 2X port and starboard side new 2018

i60 Raymarine wind new in 2018

Exclusions

Owner's personal belongings.

Disclaimer

The Company offers the details of this vessel or yacht in good faith but cannot guarantee or warrant the accuracy of this information nor warrant the condition of the vessel. A buyer should instruct his representatives, agents, or his surveyors, to investigate such details as the buyer desires validated. This vessel or yacht is offered subject to prior sale, price change, or withdrawal without notice.

PHOTOS

Manufacturer Provided Image



Starboard side



Deck looking aft



Ports side forward view



Fore deck with sail locker



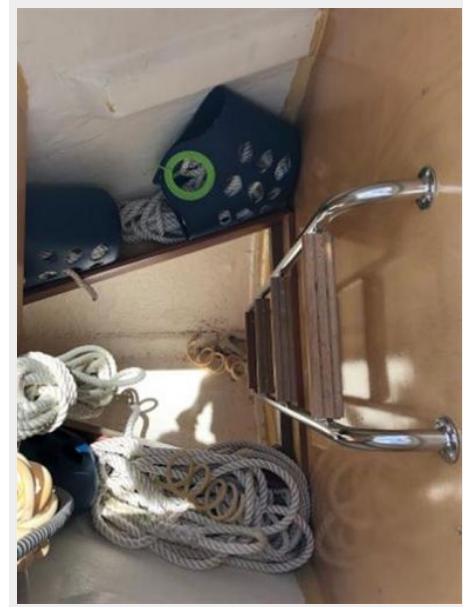
Roller furling Genoa



Lewmar Anchor windless



Sail locker in the fore deck



Cockpit view



Arch with KVH satellite TV antenna



Stainless arch



Port side steering station with i70 Raymarine Multi and i60 Wind



Raymarine 12" Axiom in cockpit



Starboard steering station



Starboard steering station i70 Multi and auto pilot



Starboard electric maneuvering winch



Port side electric maneuvering winch



Cockpit table and large cockpit area



Deep locker in cockpit



Chart table



Chart table



Starboard settee with leather upholstery



Galley zincs with covers for more working space



View from the galley



Galley



Like new never used stove



Never used stove



Microwave



Large freezer



VitroVrigo refrigerator



Salon table



Salon Table extended



Salon table



Galley counter with lots of working space



For ward stateroom queen size berth



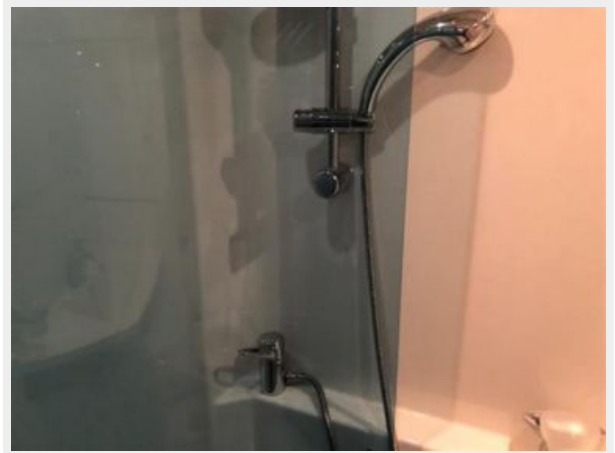
Queen size berth in Forward stateroom



Head with separate shower for forward state room



Separate shower



Forward stateroom door to main cabin closed



Forward stateroom hanging closed



Forward stateroom vanity



Aft head and shower access from main cabin and aft stateroom



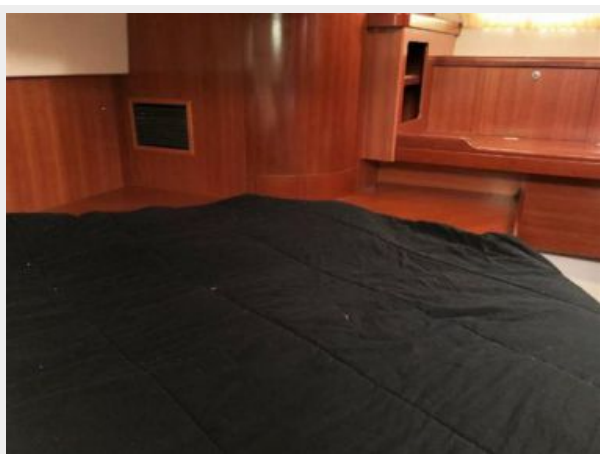
Aft shower



Aft cabin desk and hanging locker



Aft cabin queen size berth



Ice maker in aft cabin



Aft cabin



Yanmar 76HP front access



Engine Yanmar 76HP



Yanmar 76HP



Delta 44LBS never used



CONTACTS

Andrey Shestakov, leading yacht broker of the sales department of Shestakov Yacht Sales Inc. Shestakov Yacht Sales Inc., the official representative of the Miami/Fort Lauderdale FL headquarters.

Contact details

Email: andrey@shestakovyachtsales.com

Web: shestakovyachtsales.com/en/

Telephones

USA: +1(954)274-4435

Office hours

Monday – Saturday: **9:00 - 21:00** EDT

Sunday: **closed**

Address



Harbour Towne Marina, 850 NE 3rd St,
STE 213, Dania, FL 33004