

CAVALIER — ISLAND PACKET YACHTS



Судостроитель:
ISLAND PACKET YACHTS

Год постройки: 2008

Модель: Моторный парусник

Цена: ЦЕНА ЯХТЫ ПО ЗАПРОСУ

Местонахождение: United States

Длина общая: 41' 0" (12.50m)

Ширина: 12' 9" (3.89m)

Макс. осадка: 3' 8" (1.12m)

Купить Cavalier — ISLAND PACKET YACHTS а также выбрать подходящую вам яхту из нашего каталога яхт вам поможет опытный яхтенный брокер Андрей Шестаков. На сегодняшний день компания Shestakov Yacht Sales Inc. имеет большое количество яхт в собственном списке продаж, а также тесно сотрудничает со всеми крупными яхтенными производителями по всему миру.

Для того чтобы купить яхту Cavalier — ISLAND PACKET YACHTS а также проконсультироваться по любому вопросу связанному с покупкой, продажей, чартером яхт позвоните по телефону **+7(918)465-66-44**.

ОГЛАВЛЕНИЕ

ОГЛАВЛЕНИЕ	2
ХАРАКТЕРИСТИКИ	7
Обзор	7
Основная информация	8
Размеры	8
Скорость, вместимость и масса	8
Размещение	8
Корпус и палуба	8
Информация о двигателе	9
ПОДРОБНОЕ ОПИСАНИЕ	10
Accommodations	10
Galley	10
Electronics and Navigation	10
Electrical and Mechanical	11
Sails and Rigging	11
Deck and Hull	12
Engine	12
Manufacture Provided Description	13
Broker's Description	13
Исключения	13
Отказ от ответственности	13
ФОТОГРАФИИ	15
On the hook...	15
Out on the water...	15
Bahamas trip...	15
No Name Harbor, Miami....	15
Manufacturer Provided Image	15
Manufacturer Provided Image	15

At the dock..	16
From across the canal...	16
Stern view at the dock...	16
Dinghy up...	16
Dinghy, Motor and SeaWise Davit System	16
Forward cockpit	16
Forward cockpit	17
Forward cockpit, with Teak Steps on entry	17
Starboard wide side decks, with high SS rails	17
Starboard side forward deck	17
Bow view	18
Muir Electric Windlass	18
Delta Anchor	18
Bow Locker, Salt Water wash-down, foot switches for windlass	18
Looking aft from bow	19
Forward cockpit, from bow	19
Port side deck	19
Port side entry to cockpit	19
Charleston Mast, running gear in excellent condition	20
Rear cockpit	20
Table up.....	20
Rear cockpit	20
Dinghy and motor going down	21
Almost there....	21
Ready to board...	21
Ready to head out....	21
Sail controls and Electric Winch, aft cockpit	21
All sail controls from aft cockpit...	21
Electric winch control	22

Entry to Pilothouse	22
Looking in from the aft cockpit..	22
Air-conditioned or Heated Pilothouse.....	22
Starboard side, Pilothouse	23
Port side, Pilothouse	23
Looking forward from entry door	23
Looking aft from helm..	23
Helm area	23
Helm area	23
Helm	24
LARGE Dinette	24
Ready for dinner...	24
Helm seat	24
Helm controls	25
Secondary Garmin GPS	25
Looking below from Pilothouse,port side	25
Looking aft through the Galley to Pilothouse	25
Looking below from Pilothouse, starboard side	26
Galley	26
Galley Counter, showing refrigerator sections	26
LARGE Refrigerator and Freezer	26
Refrigerator and Freezer sections	27
Each with light...	27
Panel for refrigerator/freezer	27
Galley storage...	27
Galley sink ...	27
Galley Storage...	27
More Galley Storage..!	28
Master Stateroom forward	28

Master Stateroom Starboard Hanging Lockers	28
Large Master Berth	28
Cedar Lined Hanging lockers in Master Stateroom	29
Master Stateroom Port Hanging Lockers and Storage	29
Looking from Navigation Station forward to Master Stateroom and Head/Shower/Vanity	29
Storage below berth in Master Stateroom	29
Looking from Master Cabin aft to Guest Cabin	30
Large Stand Up Shower	30
Seat in shower area also	30
Vanity in head	30
Full size Raritan Electric Head	31
Navigation area	31
Guest cabin aft	31
Plenty of Storage in Guest Cabin	31
Hanging locker in Guest Cabin	32
Electrical Panel	32
Power monitor	32
Tank monitor	32
AC and Generator panel	32
AC panel	32
High Water Pump and Alarm	33
ICOM VHF	33
SeaGull Water Filter	33
Hot Water tank	33
Wi-fi Booster	34
Reading lights and cabin fans	34
Autopilot Remote	34
Camera in aft cockpit facing aft	34
View from helm for the camera	34

Raymarine Wind Instrument	34
Raymarine ST 60+ Instruments	35
Raymarine Autopilot	35
Garmin Chartplotter	35
Garmin Chartplotter showing Siirus Weather	35
Shorepower plugs in locker	35
Opening for shower power cable	35
Yanmar 110 HP Engine under berth in Guest Cabin	36
Solar Panel and TV antennas on cabin top	36
Yanmar 110 HP Engine	36
Sea Strainers and access to drive shaft	36
Watermaker Panel	37
Sea Recovery Watermaker	37
Mase Generator and batteries	37
Propane Tanks	37
NEW Bottom Paint, November 2017	37
NEW Bottom Paint, stern view	37
Bow Thruster	38
Rudder	38
Manufacturer Provided Image	38
Max Prop	38
КОНТАКТЫ	39
Контактная информация	39
Телефоны	39
Время работы	39
Адрес	39

ХАРАКТЕРИСТИКИ

Обзор

The Island Packet SP Motorsailer Cruiser offers year around boating comfort, trawler-like livability and motoring performance, simple and versatile sailing and legendary IP quality and Value....

"Cavalier" is an **OUTSTANDING EXAMPLE OF THIS FINE VESSEL !!** She has been **meticulously maintained** by her second and current owner to the Highest Standards. She is truly **"Cruise or Live Aboard" Ready !!**

Here are just some of her Key Features:

- **Two Owner Vessel**
- **Mase 6 KW Generator with only 160 hours**
- **NEW 2014 Sea Recovery 350 GPD Watermaker with automatic flush system**
- **Bottom Painted November 2017 !!**
- **Twin cockpits, one aft, perfect for the morning cup of coffee and one forward, just the right spot for your guests to sit while cruising or at anchor**
- **Electric winch that controls all sails in the aft cockpit**
- **Garmin 4212 Chartplotter with AIS receive and transmit, Sirius XM Weather and Video Camera on stern**
- **NEW Oct. 2013 SeaWise ® Dinghy/Motor Lift and 10' Hypalon Dinghy with console steering and 20 hp. motor**
- **November 2014 Jib and Mainsail reconditioned and New Sunbrella UV protection added**
- **March 2017 Standing Rigging Inspected and adjusted**
- **Yanmar 110 HP Engine with only 788 hours and a NEW 2014 PYI MaxProp folding propeller**
- **NEW June 2017 16,000 BTU forward Air Conditioner**

Check out Full Specifications for all the details and more.....

Here is a review from Cruising World for the Island Packet SP Cruiser:

"Given both an aging demographic looking for ways to extend the free life afloat and a brand following known to favor solid construction and comfort over high performance, IP as made a bold, yet almost inevitable, move in the motorsailing market.

It's done so honestly and well with the SP Cruiser, for it does exactly what the company says it will do: provide "year around boating comfort, trawlerlike livability, motoring performance, and simple and versatile sailing." With an SA/Disp. of 14.8, and a D/L of 223, the sailing will depend on ample wind from a favorable direction. The boat sailed an honest 6.3 knots with a beam wind of 16 knots. It stood well to its limited canvas, which adds distance and security to its motoring

range of 1,000 nautical miles. For light-air or closehauled work, the 110-horsepower Yanmar takes charge, controlled from a comfortable, out-of-the-weather pilothouse helm that has excellent visibility.....

Основная информация

Тип судна: Моторный парусник

Подкатегория: Крейсерская яхта

Модельный год: 2008

Год постройки: 2008

Страна: United States

Размеры

Длина общая: 41' 0" (12.50m)

Длина по ватерлинии: 34' 9" (10.59m)

Ширина: 12' 9" (3.89m)

Макс. осадка: 3' 8" (1.12m)

Трапы: 55' 5" (16.89m)

Скорость, вместимость и масса

Водоизмещение: 23000 Pounds

Вместимость воды: 130 Gallons

Вместимость сточного бака: 50 Gallons

Объем топливного бака: 215 Gallons

Размещение

Всего кают: 2

Всего коек: 3

Всего ком. состава: 1

Корпус и палуба

Материал корпуса: Fiberglass

Дизайнер корпуса: Bob Johnson

Информация о двигателе

Двигатели: 1

Производитель: Yanmar

Модель: 4JH4-GHTBE

Тип двигателя: Inboard

Тип топлива: Diesel

ПОДРОБНОЕ ОПИСАНИЕ

Accommodations

Pilothouse: Large enclosed helm station at the forward end of the pilothouse (with a large overhead hatch and opening central window that opens to the forward cockpit area). There are two helm chairs that swivel to the large dining area with L shaped Ultra Leather settee and teak table.

Interior Accommodations: It is Especially Spacious below you will find the owner's stateroom forward with a large island berth with innerspring mattress, two large hanging lockers and privacy doors to galley passageway & head.

To starboard: head with separate shower stall, just aft is the office/navigation station with vanity and varnished hardwood desk with tray storage under and a hinged lid with upholstered seat. Farther aft is the guest cabin with wide twin berths, a large hanging locker and an array of storage cabinets and privacy door.

To port: large galley with center island and walk through design and large pantry storage cabinet aft of galley. Pantry cabinet easily converts to space to install washer/dryer, wine cooler, or additional refrigeration.

- Air Conditioned in Pilothouse and below both at the dock and at anchor with the Mase 6KW Generator
- Sea Recovery 350 GPD Watermaker
- **PLENTY** of storage throughout this vessel
- All the windows in the pilothouse have Custom Wooden Blinds and all ports throughout have **Peek-A-Boo** shutters
- Central Vacuum System

Galley

- Large Frigiboat Keel Cooler freezer and refrigeration system with digital controls
- Microwave oven
- Force 10 LPG two burner stove with oven
- SeaGull IV water filter
- Plenty of storage !!

Electronics and Navigation

- **Garmin 4212 Chart plotter with AIS, WIFI, Sirius XM Weather and Video Camera for**

the stern

- Raymarine ST60 Knot/Depth and Wind Indicator instruments
- Backup Garmin Chart Plotter 441
- ICOM422 VHF with Command microphone at helm
- Raymarine 6002 Autopilot w/ wireless remote at helm
- Three flat screen Televisions, Master, Guest, Helm
- Shakespeare Sea Watch TV antenna
- Sony AM/FM/ CD Radio, with speakers at Nav Station, helm and rear cockpit
- Smoke/Carbon Monoxide detectors

Electrical and Mechanical

- **6kw Mase Generator with 160 hours**
- **NEW 2014 Sea Recovery Aqua Whisper Mini 350 GPD Watermaker with automatic freshwater flush, remote, maintenance kit, and UV sterilizer**
- ProWatt 2500 watt inverter
- Solar Panel, 75 Watt
- LED lighting throughout
- **NEW 2016** AGM12 volt batteries: six house and one dedicated engine start
- Two 16 BTU AC/Heat systems, one for Pilothouse and one for cabin which is **NEW in June 2017**
- Dual 30 Amp AC dockside power
- Water Heater both 110 and engine
- Raritan "Elegance" electric fresh water head
- Acu-gage Tank Monitoring System
- Central Vacuum System

Sails and Rigging

A simplified, self-tending roller furling sloop rig has sail controls led to an electric winch in the aft-cockpit for easy sail control....

- Charleston In Mast Furling system for mainsail
- Hoyt self-tending system for the Genoa and Harken Furling
- **November 2014** Mainsail and Jib sent to UK Sailmakers Sarasota to be reconditioned and new Sunbrella UV protection added. The IP Star was also added to the mainsail at the same time
- Lewmar Ocean Series 40 CST and 16 CST winches on mast
- Lewmar Ocean Series 40 CEST Electric Winch in aft cockpit
- **NEW 2014** four blade PYI Max Prop
- **March 2015** Standing Rigging Inspected and tuned

Rig Dimensions:

Sail area 714 sq. ft.

Disp./Length 245

SA/Displacement 14.1%

Mast height 56 ft.

Deck and Hull

- **Vetus Bow Thruster**
- Muir Electric anchor windlass with controls at bow and helm
- Delta 44 Anchor with 200 ft. of chain
- Fortress Anchor with 200 ft. of chain
- Lower rub rail with stainless steel striker
- Cockpit Cover for forward cockpit
- Full Screens for side and rear opening deckhouse windows
- Forward cockpit table
- **NEW Oct. 2013** SeaWise Dinghy Davit System
- **NEW 2013** 10 foot Brig Hypalon Inflatable dinghy with 20 hp Tohatsu 4stroke motor and console steering.
- **NEW 2013** Continental Trailer for dinghy
- Safety equipment including PFDs
- Saltwater Wash-down at bow
- **November 2017** bottom painted with Trinidad 75 hard paint and the diver always cleans and inspects the bottom monthly

Comments on Hull Design from Bob Johnson, N.A.:

"One key difference in the SP Cruiser from our prior Island Packet designs is a new hull form, providing increased hull speed and virtually level running under power, even at full throttle. While the signature Island Packet Full Foil Keel® has been retained for its many attributes (shoal draft, low ballast center of gravity, protected prop and rudder, integral structural attachment, superb seakeeping, double bottom protection, etc.), the SP's broader stern sections, with a flatter run and less deadrise (vee), provide the improvements under power. The large fuel tank allows extended range under power with very economical fuel consumption. Of course, one can also augment powering performance with the sails, increasing speed and/or reducing fuel usage....."

Engine

- Yanmar 4JH4-GHTBE 110 HP Engine with only 825 hours
- Full Maintenance records
- **NEW 2014** PYI MaxProp 4 blade folding prop

- Complete engine instrumentation at helm
- Racor 900 Fuel Filter

Manufacture Provided Description

The SP Cruiser offers year round boating comfort, trawler-like livability and motoring performance, simple and versatile sailing and legendary IP quality and value.

Among many unique features are the SP Cruiser's twin cockpits. One aft, perfect for the morning's first cup of coffee, plus one forward just the right place for a group to sit while cruising or at anchor on a beautiful day. Large opening side and back windows in the enclosed deckhouse offer panoramic views while the center windshield panel hinges upward to allow socializing with family and friends in the forward cockpit.

Control of this vessel is made easy and comfortable with dual helm and companion chairs plus a large console forward of the wheel for engine controls and instrumentation. The optional autopilot gives you the ability to steer the boat from virtually any location aboard with a wireless handheld control. And with the dual swivel chairs and L-shaped settee with folding table, this is a wonderful spot to have a meal or play a game of cards regardless of what the weather is doing outside.

Broker's Description

"Cavalier" has been Meticulously Maintained by both of her owners and especially by her current owner's. Her Very Knowledgeable owners have taken great care to update her for long distance cruising and maintain all systems with High Standards. "Cavalier" has been cruising the East Coast to the Bahamas, both coasts of Florida and the Keys for the last three years and now her owners have decided to move to a Downeast style vessel to do the "Loop".

This vessel is truly "Cruise Ready"!! You can head off to the Bahamas or beyond right after you pick up the boat at the owners home dock, and all you will need to do is add provisions.

Исключения

При продаже яхты исключаются личные вещи владельца.

Отказ от ответственности

Компания предоставляет описание судна или яхты добросовестно, но не может гарантировать точность этой информации, а также не ручается за техническое

состояние. Покупатель должен проинструктировать своих агентов или оценщиков исследовать представленную информацию более подробно, по собственному желанию. Продажа судна или яхты, изменение цены или снятие с продажи будет происходить без предварительного уведомления.

ФОТОГРАФИИ

On the hook...



Out on the water...



No Name Harbor, Miami....



Bahamas trip...



Manufacturer Provided Image



Manufacturer Provided Image



From across the canal...



At the dock..



Stern view at the dock...



Dinghy up...



Dinghy, Motor and SeaWise Davit System



Forward cockpit



Forward cockpit



Forward cockpit, with Teak Steps on entry



Starboard wide side decks, with high SS rails



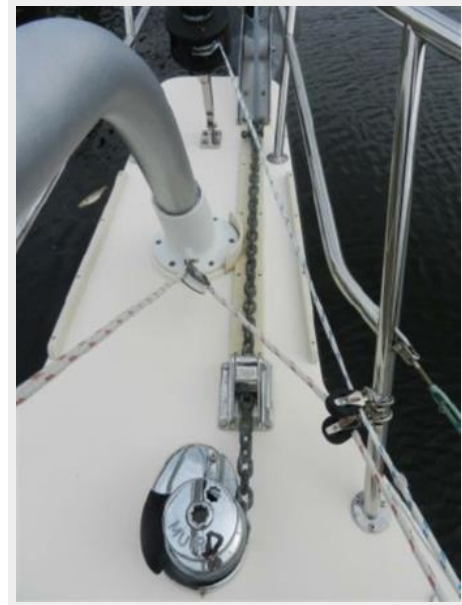
Starboard side forward deck



Bow view



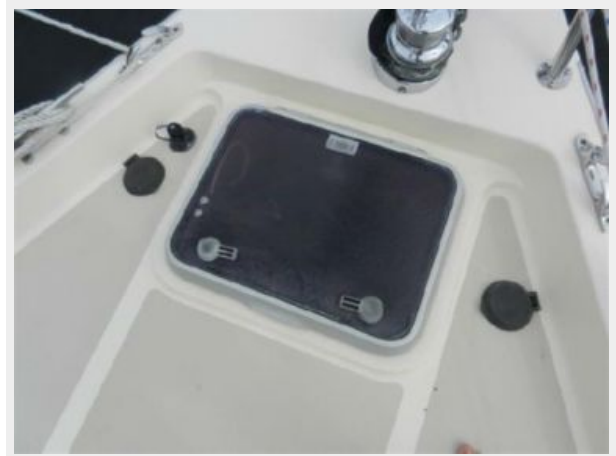
Muir Electric Windlass



Delta Anchor



Bow Locker, Salt Water wash-down, foot switches for windlass



Looking aft from bow



Forward cockpit, from bow



Port side deck



Port side entry to cockpit



Charleston Mast, running gear in excellent condition



Rear cockpit



Table up.....



Rear cockpit



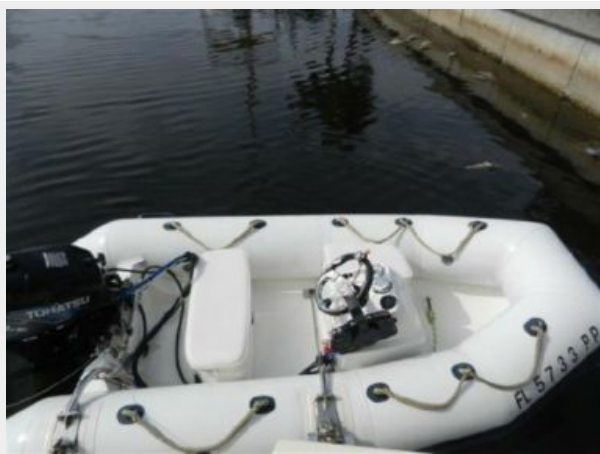
Dinghy and motor going down



Almost there....



Ready to board...



Ready to head out....



Sail controls and Electric Winch, aft cockpit



All sail controls from aft cockpit...



Electric winch control



Entry to Pilothouse



Looking in from the aft cockpit..



Air-conditioned or Heated Pilothouse.....



Starboard side, Pilothouse



Port side, Pilothouse



Looking forward from entry door



Looking aft from helm..



Helm area



Helm area



LARGE Dinette



Helm



Ready for dinner...



Helm seat



Helm controls



Secondary Garmin GPS



Looking below from Pilothouse, port side



Looking aft through the Galley to Pilothouse



Looking below from Pilothouse, starboard side



Galley



Galley Counter, showing refrigerator sections



LARGE Refrigerator and Freezer



Refrigerator and Freezer sections



Each with light...



Panel for refrigerator/freezer



Galley storage...



Galley sink ...



Galley Storage...



More Galley Storage..!



Master Stateroom forward



Large Master Berth



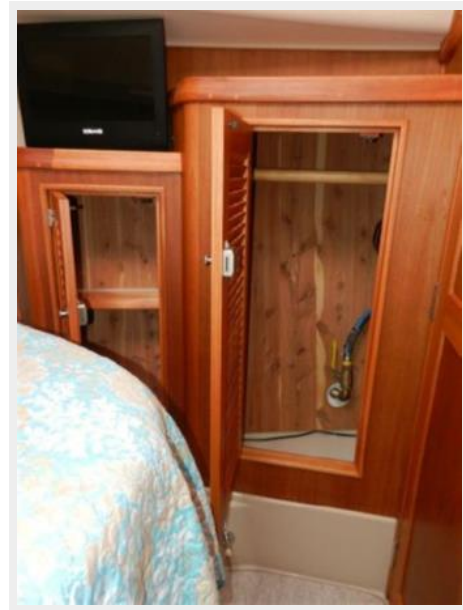
Master Stateroom Starboard Hanging Lockers



Master Stateroom Port Hanging Lockers and Storage



Cedar Lined Hanging lockers in Master Stateroom



Storage below berth in Master Stateroom



Looking from Navigation Station forward to Master Stateroom and Head/Shower/Vanity



Looking from Master Cabin aft to Guest Cabin



Large Stand Up Shower



Seat in shower area also



Vanity in head



Full size Raritan Electric Head



Navigation area



Guest cabin aft



Plenty of Storage in Guest Cabin



Hanging locker in Guest Cabin



Electrical Panel



Power monitor



Tank monitor



AC and Generator panel



AC panel



High Water Pump and Alarm



ICOM VHF



Hot Water tank



SeaGull Water Filter



Reading lights and cabin fans



Wi-fi Booster



Autopilot Remote



Camera in aft cockpit facing aft



View from helm for the camera



Raymarine Wind Instrument



Raymarine ST 60+ Instruments

Raymarine Autopilot



Garmin Chartplotter



Garmin Chartplotter showing Siirus Weather



Shorepower plugs in locker



Opening for shower power cable



Yanmar 110 HP Engine under berth in Guest Cabin

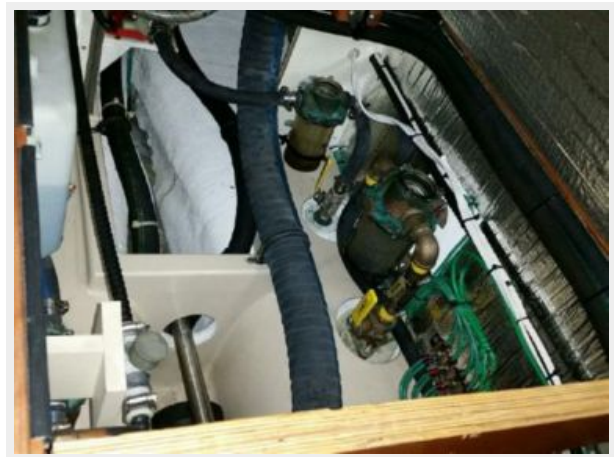
Solar Panel and TV antennas on cabin top



Yanmar 110 HP Engine



Sea Strainers and access to drive shaft



Watermaker Panel



Sea Recovery Watermaker



Mase Generator and batteries



Propane Tanks



NEW Bottom Paint, November 2017



NEW Bottom Paint, stern view



Bow Thruster



Rudder



Max Prop



Manufacturer Provided Image



КОНТАКТЫ

Андрей Шестаков (Andrey Shestakov) – ведущий яхтенный брокер отдела продаж яхт и судов компании Shestakov Yacht Sales Inc. Официальный представитель Shestakov Yacht Sales Inc. для русскоговорящих клиентов в центральном офисе компании в Майами/Форт Лодердейл/Флорида/США.

Контактная информация

Email: andrey@shestakovyachtsales.com

Web: shestakovyachtsales.com

Телефоны

Краснодарский край: **+7(918)465-66-44**

США, Майами, Флорида: **+1(954)274-4435**

Время работы

Понедельник – Суббота: **9:00 - 21:00**
EDT

Воскресенье: **Закрито**

Адрес



Harbour Towne Marina, 850 NE 3rd St,
STE 213, Dania, FL 33004