

## FAIR WIND — LORD NELSON



**Builder:** LORD NELSON

**Year Built:** 1982

**Model:** Cruising Sailboat

**Price:** PRICE ON APPLICATION

**Location:** United States

**LOA:** 41' 0" (12.50m)

**Beam:** 12' 8" (3.86m)

**Max Draft:** 5' 7" (1.70m)

Our experienced yacht broker, Andrey Shestakov, will help you choose and buy a yacht that best suits your needs Fair Wind — LORD NELSON from our catalogue. Presently, at Shestakov Yacht Sales Inc., we have a wide variety of yachts available on our sale's list. We also work in close contact with all the big yacht manufacturers from all over the world.

If you would like to buy a yacht Fair Wind — LORD NELSON or would like help answering any questions concerning purchasing, selling or chartering a yacht, please call +1(954)274-4435

---

# TABLE OF CONTENTS

---

TABLE OF CONTENTS	2
SPECIFICATIONS	3
Overview	3
Basic Information	3
Dimensions	3
Speed, Capacities and Weight	4
Accommodations	4
Hull and Deck Information	4
Engine Information	4
DETAILED INFORMATION	5
Additional Information	5
Recent Upgrades and Updates	7
Exclusions	10
Disclaimer	10
PHOTOS	11
CONTACTS	21
Contact details	21
Telephones	21
Office hours	21
Address	21

---

# SPECIFICATIONS

---

## Overview

---

“The prettiest boat here” is a compliment you’ll get often when aboard this highly regarded rare blue-water sailing yacht.

Fair Wind is in excellent condition, meticulously maintained and ready to go anywhere!

Highlights that make this Lord Nelson stand out among all the other blue-water classic cruisers on the market today include: repowered in 2003 with Yanmar 75hp diesel with freshwater only sailing through 2014, only 1290 hours, full cockpit enclosure (2016), solid fiberglass hull and deck with the teak decks removed and painted with Awlgrip in 2013, recent haul out and bottom paint with 4 coats of Micron CSC (2017), 6 sails all in very good condition (fully battened main with 3 reef points and stack pack, furling genoa and Yankee head sails, furling staysail, asymmetrical spinnaker and storm sail), Monitor wind vane steering (uninstalled but complete), wind generator, Globalstar 1500 sat phone, air conditioning and a history of consistent maintenance of all systems throughout the vessel. She’s beautiful inside and out, has traveled from the Pacific Northwest through the Panama Canal to the Caribbean, across the Atlantic twice, and is waiting, able and ready to take you wherever your heart desires!

## Basic Information

---

**Category:** Cruising Sailboat

**Sub Category:** Other

**Model Year:** 1982

**Year Built:** 1982

**Country:** United States

## Dimensions

---

**LOA:** 41' 0" (12.50m)

**LWL:** 36' 2" (11.02m)

**Beam:** 12' 8" (3.86m)

**Max Draft:** 5' 7" (1.70m)

**Clearance:** 63' 0" (19.20m)

---

## Speed, Capacities and Weight

---

**Displacement:** 30500 Pounds

---

## Accommodations

---

**Total Cabins:** 3

**Total Berths:** 4

**Total Heads:** 1

---

## Hull and Deck Information

---

**Hull Material:** Fiberglass

**Hull Configuration:** Monohull

---

## Engine Information

---

**Engines:** 1

**Manufacturer:** Yanmar

**Model:** 4JH3TE

**Engine Type:** Inboard

**Fuel Type:** Diesel

---

# DETAILED INFORMATION

---

---

## Additional Information

---

### Electronics

- NMEA2000/STng backbone
- RayMarine (all 2014 or newer)
  - itc-5 analog to NMEA2000/STng transducer converter
  - Wind transducer (new 2016)
  - Speed transducer (new 2016)
  - C-125 multifunction display at nav station
  - Two (2) i70 nav instruments over companionway visible to crew
  - e7 multifunction display over companionway visible to crew
  - eS7 multifunction display at helm (2018)
  - P70 autopilot control at helm
  - AIS650 Class B AIS
  - SPX30 autopilot (2012)
  - Type 2 linear drive (2018)
  - 48 mile HD Color Radar
  - HS5 network switch
- Maretron (2014 or newer) Standard Horizon "Explorer" VHF at nav station with RAM mic at helm. Wired to C-125 for distress calling with position
- Fusion MS RA70N stereo with two (2) zones. Bose speakers in cabin and cockpit.
- FFM100 fuel flow monitor with totalizer
- FPM100 fuel tank level monitor
- DSM250 multifunction display
- Globalstar 1500 sat phone with external antenna
- ACR EPIRB
- LCD TV with mast top antenna and amplifier
- Combustible gas detector with alarm

### Sails

- Fully battened mainsail with 3 reef points and stack-pack (stack-pack 2016)
- Furling Genoa
- Headsails:
  - Furling Yankee
  - Furling Staysail
- Asymmetrical spinnaker with snuffer
- Storm sail
- Note: Head sails and staysails cleaned (2016)
- Spinnaker pole mast mounted

## Rigging

- Standing rigging and chain plates replaced 2010. Freshwater until 2014
- Running rigging replaced 2012
- ProFurl headsail roller furling
- Harkin staysail roller furling (2015)
- Winches (All winches completely disassembled, cleaned, pawls and springs replaced and lubricated 2018) Ronstan Genoa and Staysail cars (2014) Selden mainsheet blocks (2017) Steering Wheel
  - Three (3) Barent self-tailing, Five (5) standard
  - Two Anderson 52 ST for Jib Sheets (2000)
- Emergency Tiller

## Inside Equipment

- Two (2) electric bilge pumps
- Propane oven and stove with solenoid valve on propane line
- Manual sea water and fresh water pumps in Galley. Rebuilt 2017
- Lavac head with Whale gusher 50 manual pump
- Dometic SaniPump holding tank discharge pump (2014)
- Holding tank for shower, AC condensation and refrigerator drain with automatic Whale pump out
- Huge refrigerator/freezer with new Adler/Barbour Super Cold Machine compressor, sea water cooling, pump and evaporator (2014)
- Webasto 16,000 BTU/H air conditioner with reverse cycle heat and remote control (2014)

## Electrical Equipment

- 30 amp shore power
- Honda Eu2000 generator with custom mount and cord
- "SmartPlug" 30 amp inlet Charles Isolation Transformer Victron 2000/80/12 inverter/charger with generator boost and remote control.
  - Three (3) shore power cords- 1 30 amp 50' with "SmartPlug, 1 30 amp 50' with standard connectors and 1 20 amp for connecting to generator.
- Victron battery monitor
- Sun Force wind generator
- Balmar 165 amp alternator (2017)
- Installed Serpentine belt for alternator (2017)
- Balmar Maxcharge voltage regulator (2017)
- 6 Trojan T105 batteries (2012)
- All 120v and 12v breakers replaced 2017
- Interior lighting updated to LED

## Outside Equipment

- Radar reflector

- Teak cockpit
- Cockpit cushions
- Swim ladder
- 400 lb motor hoist (2018)
- Cockpit table
- Mast Pulpits
- Wind Generator
- Lofrans Tigress electric windlass
- Grill
- Through bolted heavy duty lifeline stanchions of seagoing height. Lifelines replaced 2014

## Canvas

- Genoa, Yankee and Staysail Suncovers
- Stack-Pack for main sail
- Dodger
- Cockpit Bimini and enclosure (2015)
- Bowsprit cover (2015)
- Caprail covers (2015)

## Ventilation

- 14 opening bronze portlights with screens
- 3 24x26 hatches with screens
- 4 Dorade vents
- 2 12v fans

## Safety Equipment

- Four offshore lifejackets
- EPIRB
- Jacklines from cockpit to bow
- 2 Harnesses
- 2 tethers
- Lifesling
- Flares
- Sea Anchor/Drogue with rode
- 3 fire extinguishers
- Bilge pump alarm

---

## Recent Upgrades and Updates

---

### 2018

- All winches serviced including windlass

- Replaced autopilot actuator
- Replaced hoses between engine and HWT
- Flushed cooling system
- Added NavPod at helm with RayMarine e7 multifunction display and USB charging port
- Added 400 pound motor davit

## 2017

- Replaced all breakers in electric panel
- Added RayMarine HS switch
- Installed 165 AMP Balmar alternator, kept 90 amp as spare
- Installed new Balmar MaxCharge alternator regulator, kept old as spare
- Refinished all exterior teak
- Bottom cleaned, sanded and repainted with 4 coats Micron CSC
- Serviced seacocks
- Re-plumbed freshwater system.
- Replaced main sheet blocks
- New main bilge pump
- Replaced all drain hoses
- Waxed hull and deck

## 2016

- Installed Charles Isolation Transformer
- Installed Victron 2000/80 inverter/charger
- Installed Victron battery monitor
- Inspected, repaired and replaced as needed all 120v wiring.
- Installed ELCI main breaker
- Installed custom sub-panel at nav station
- Added Maretron fuel flow
- Added Maretron fuel tank level monitors
- Added Maretron DM250 multifunction display
- Added Fusion stereo amp and receiver
- Installed Bose speakers
- New canvas including-
  - Bimini and enclosure
  - Cap rail cover
  - Doghouse cover
  - Bowsprit cover
- Roller furling for staysail
- Stack-pack for mainsail
- Added Air Conditioning
- LED bulbs for interior lights
- New Wind generator
- Rebuilt all faucets



- Rebuilt manual pumps
- Added holding tank for shower, AC condensation and reefer drain
- Added breakers to sub-panel feeds and windlass circuit
- Added “sweeper” bilge pump
- Replaced Wind transducer with new
- Replaced Speed transducer with new
- Replaced lifelines
- Complied with Yanmar 1000 hour service

## 2014

- Changed alternator v-belt to serpentine belt
- New memory foam mattress
- New refrigeration in reefer
- Moved boat from freshwater Lake Erie to Punta Gorda FL
- Added TV antenna at masthead
- New RayMarine electronics including-
  - SPX30 Autopilot
  - C127 Chartplotter at nav station
  - 2 i70 data instruments at bridge station
  - e7 at bridge station
  - itc-5 NMEA 2000 converter
  - RayMarine STNG backbone
  - RayMarine 48 mile HD color radar

## 2012-2013

- New RayMarine electronics including-
  - SPX30 Autopilot
  - ST70 Autopilot Controller
  - STng backbone
- Recoated bottom with 4 coats epoxy barrier, Interprotect 2000/2001.
- Re-plumbed head and replaced holding tank.
- Boat painted with Awlgrip
- Removed teak decks
- Replaced shelf in chain locker
- Replaced teak inserts on cabin top
- Re-bedded deck hardware
- Added PSS dripless shaft seal

## 2008-2010

- Replaced Chain plates
- Replaced standing rigging
- Replaced running rigging.

- Replaced dodger
- New interior cushions

## 2003

- Installed new Yanmar 75HP Turbo model 4JH3TE engine with less than 4 years of saltwater sailing, only 1290 hours

## Exclusions

---

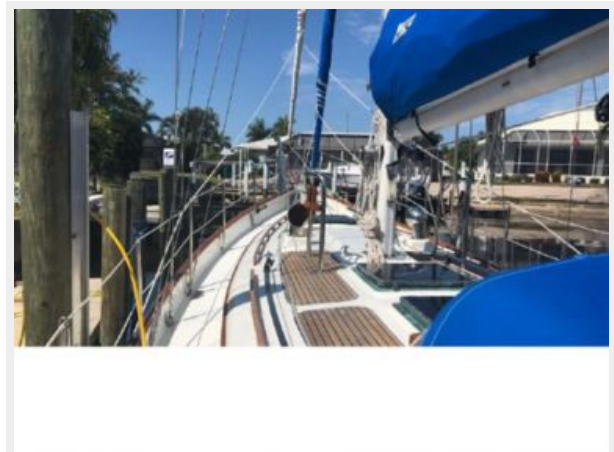
Owner's personal belongings.

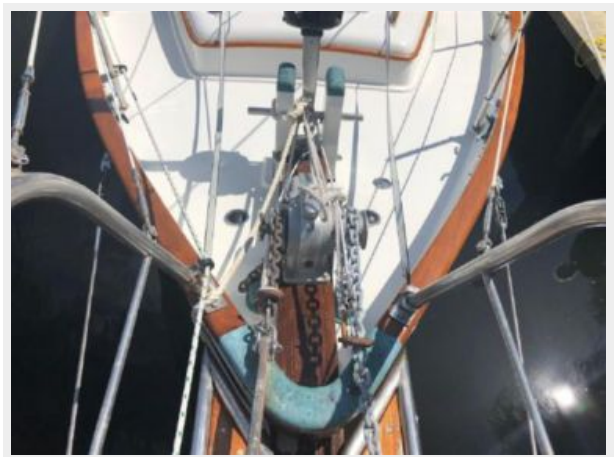
## Disclaimer

---

The Company offers the details of this vessel or yacht in good faith but cannot guarantee or warrant the accuracy of this information nor warrant the condition of the vessel. A buyer should instruct his representatives, agents, or his surveyors, to investigate such details as the buyer desires validated. This vessel or yacht is offered subject to prior sale, price change, or withdrawal without notice.

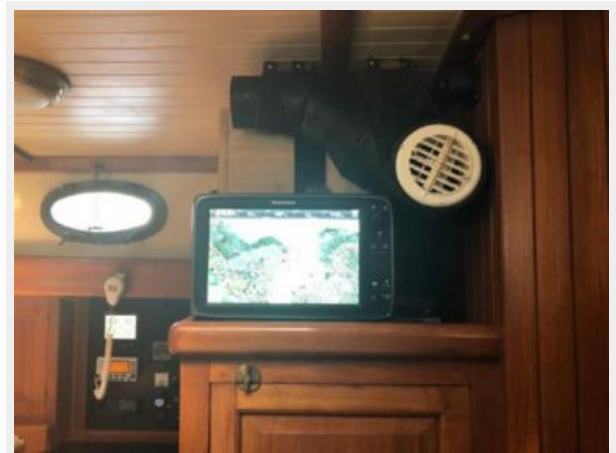
# PHOTOS

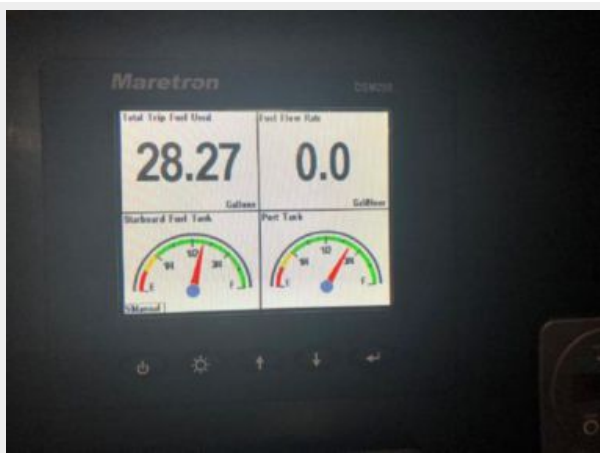






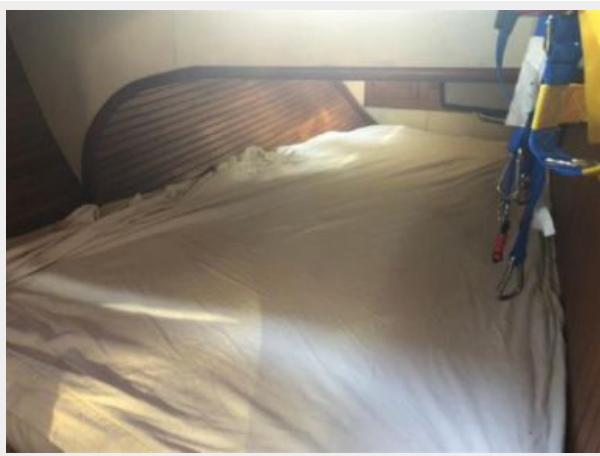
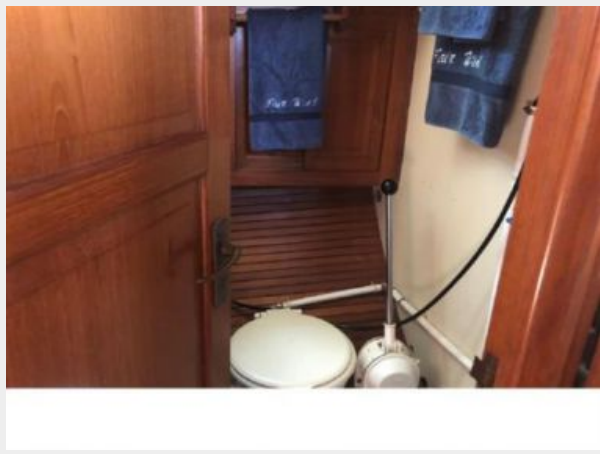
















# CONTACTS

---

Andrey Shestakov, leading yacht broker of the sales department of Shestakov Yacht Sales Inc. Shestakov Yacht Sales Inc., the official representative of the Miami/Fort Lauderdale FL headquarters.

## Contact details

---

Email: [andrey@shestakovyachtsales.com](mailto:andrey@shestakovyachtsales.com)

Web: [shestakovyachtsales.com/en/](http://shestakovyachtsales.com/en/)

## Telephones

---

USA: +1(954)274-4435

## Office hours

---

Monday – Saturday: **9:00 - 21:00** EDT

Sunday: **closed**

## Address

---



Harbour Towne Marina, 850 NE 3rd St,  
STE 213, Dania, FL 33004